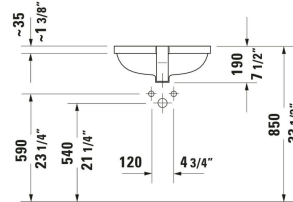
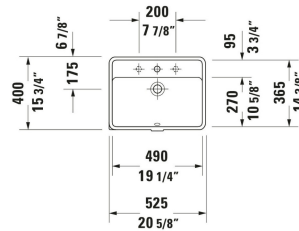


Starck 3 Sink # 0302490000 / 0302490030

|< 20 5/8 " >|



Sink	Dimension	Weight	Order number
Installation Type: Installation, 20 5/8 "x15 3/4 ", Includes faucet deck: Yes, Overflow: Yes, Installation Type: Undermount installation, Includes hardware for installation in wooden consoles			
<b>Colors</b>			
00 White			
<b>Variant</b>			
● White High Gloss, Number of faucet holes: 1, cUPC listed: No		19.621 lb	0302490000
●●● White High Gloss, Number of faucet holes: 3, Soap dispenser position: Left, cUPC listed: No		19.621 lb	0302490030

All drawings contain the necessary measurements which are subject to standard tolerances. They are stated in inch & mm and are non-binding. Exact measurements, in particular for customized installation scenarios, can only be taken from the finished ceramic piece.