



**INSTALLATION  
MANUAL**  
for shower system

## Before Installing :

Please check if all accessories are included in the package.

## Product Packing List

Item	Product Name	Quantity	Unit
1	Hand Shower	1	piece
2	Shower Head	1	piece
3	Sliding Bar	1	piece
4	Shower Arm	1	piece
5	Metal Hose	1	piece
6	Washer	2	piece
7	1.75GPM Water-Saving Piece	2	piece
8	Pipe Sealing Tape	1	piece
9	Filter Screen	1	piece
10	Double Side Tape	1	piece
11	Suction Cup	1	piece
12	Screw Assembly	2	piece
13	Installation Instruction	1	piece

Instruction includes information on proper installation and maintenance. Please read the instructions carefully before installing the products. Mounting particles are included for easy installation.

Actual product might be slightly different in appearance, but same in structure. For better accuracy, please refer to the actual object.

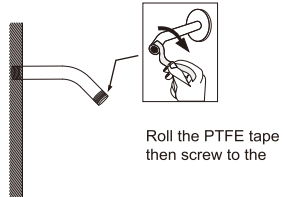
Head Sliding Rail Shower Set	Inclusive Parts:			
	Hand shower	Metal Hose	Sliding Bar	Accessories Package
				
	Shower Head	Shower Arm		
				

## Feature:

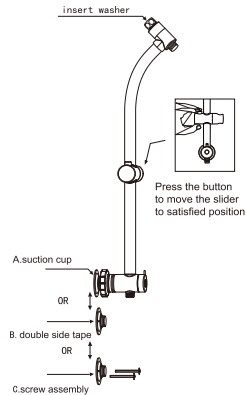
This is a drill free sliding rack with suction cup. Product can be easily installed in a few easy steps.

## Installation Instructions:

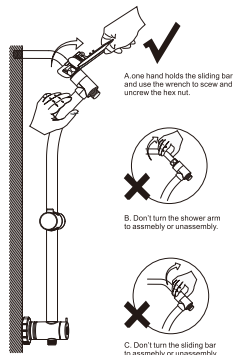
- 1 Twine PTFE tape on the thread at the long end of elbow, with a blind flange set in the elbow, and then spin the end of elbow with PTFE tape to the outlet on the wall.



- 2 Check if a washer on the nut end of lifting lever, and then tighten it on the elbow on the wall.



- 3 Tighten the hex nut by a wrench, so as to prevent water leaking (wrap up the nut with a piece of cloth while tightening in order to avoid nut scratched).

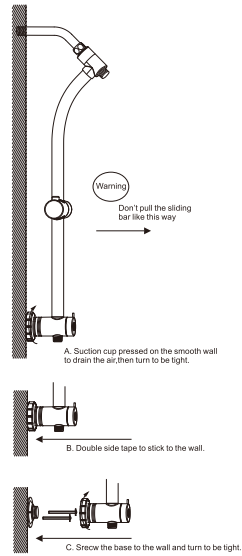


## 4 Detach the sucker from switching valve body, and select A, B or C as required

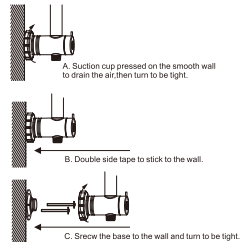
A: In the vertical downward direction of the elbow, and at the position of switching valve body against the wall, wipe the wall cleanly, and then unscrew the sucker to compress it tightly and evenly on the smooth wall, in order to exhaust air.

B: In the vertical downward direction of the elbow, and at the position of switching valve body against the wall, stick the double-sided tape on the wall evenly.

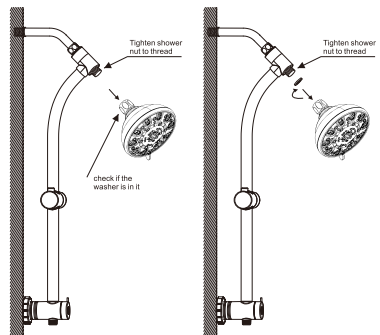
C: In the vertical downward direction of the elbow, and at the position of switching valve body against the wall, lock the base on the wall with screws.



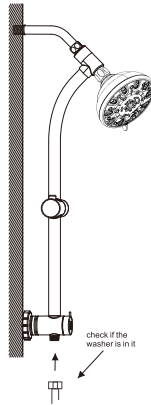
## 5 Tighten the chassis free from falling off.



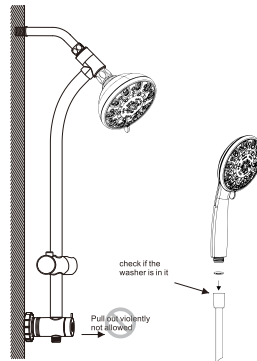
## 6 Put a washer into the ball head of top-spraying, and then tighten the top-spraying on the thread at the upper end of lifting lever.



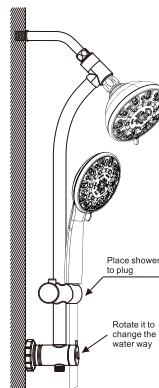
- 7** Unscrew the cap of both ends of hose, and then tighten the nut end on the lower thread of switching valve body.



- 8** Tighten the sprinkler in hand on the speaker joint of hose, and then insert it on the slide bushing of lifting lever.

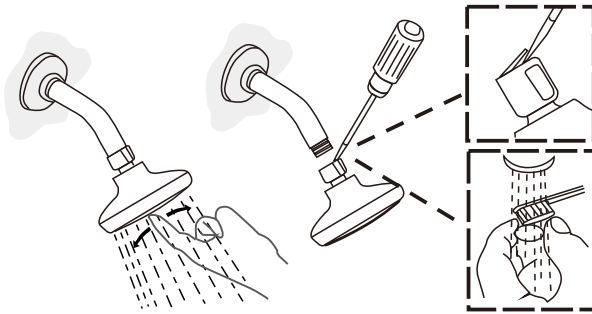


- 9** Installation is finished.



## **Cleaning and Maintenance:**

- Many active ingredients in cleaning agents such as ammonia, detergent powder and toilet cleaners may destroy the coating of the product. For best results, please use mild soap and dry thoroughly with a soft cloth.
- Do not use abrasive cleaning materials on LORDEAR Products.
- Please follow the steps below if you experience dirt blocking the flow of the water after some time.



- a. Turn on the water and poke the holes with your fingers to gently loosen minerals and release any remaining sediments.
- b. Turn off the water, remove the shower head and remove the mesh washer inside to clean with a small brush.

## **Contact US:**

**E-mail:** [lordearhome@hotmail.com](mailto:lordearhome@hotmail.com)

**Tel:** (+1)7192979696

**Link:** [www.Lordear.com](http://www.Lordear.com)



Lordear®

The image features the Lordear logo, which consists of the word "Lordear" in a white, lowercase, sans-serif font with a registered trademark symbol (®) to its upper right. The text is centered within a brown, rounded diamond shape. The background is white and features two thick, light gray lines that intersect to form a large 'X' shape. One line runs from the top-left towards the bottom-right, and the other runs from the top-right towards the bottom-left. The lines have rounded ends and overlap each other in the center.