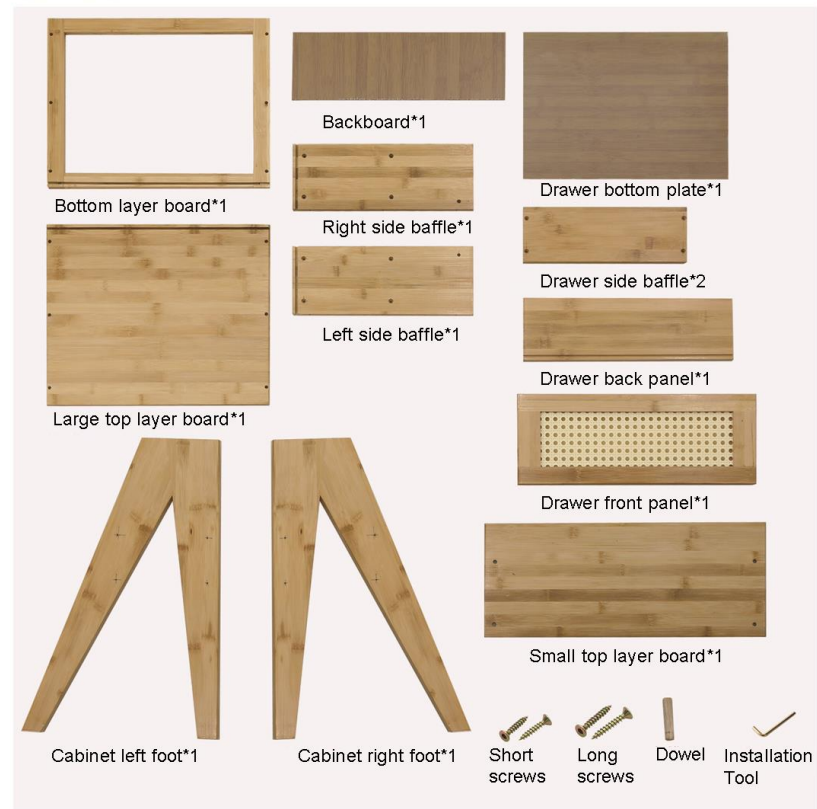


Installation Manual

Accessories List:





1. Install the bottom layer plate and the left side baffle with long screws (pay attention to the alignment of the layer plate grooves)



2. Install the right side baffle with long screws (pay attention to the alignment of the bracket and the groove of the layer board)



3. Install the left cabinet foot with a long screw



4. Install the right cabinet foot with a long screw



5. Insert the back panel along the groove



6. Install the large top layer board with long screws



7. Install the small top layer board with long screws



8. Insert the dowel into the side baffle



9. Install the front and side drawers with small screws



10. Insert the drawer bottom plate along the groove



11. Install the drawer back cover with small screws



12. Finally, insert the drawer