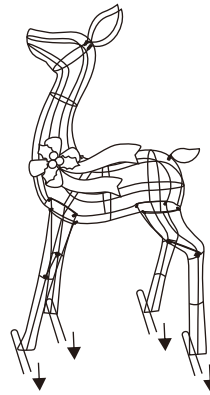
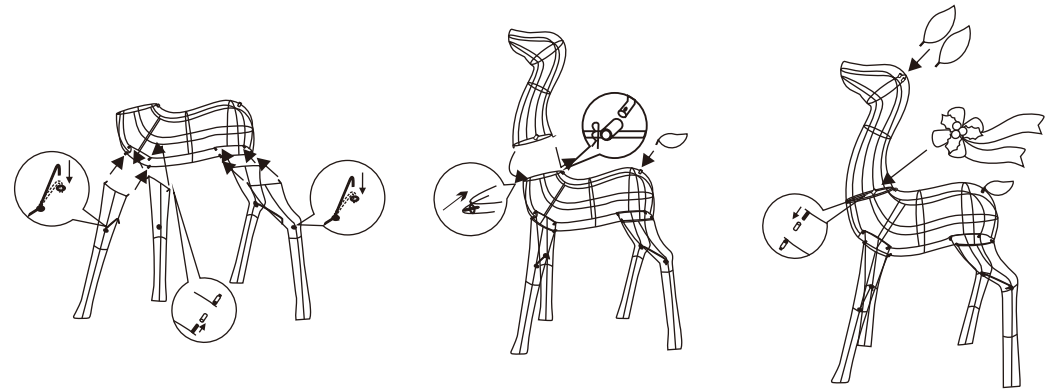
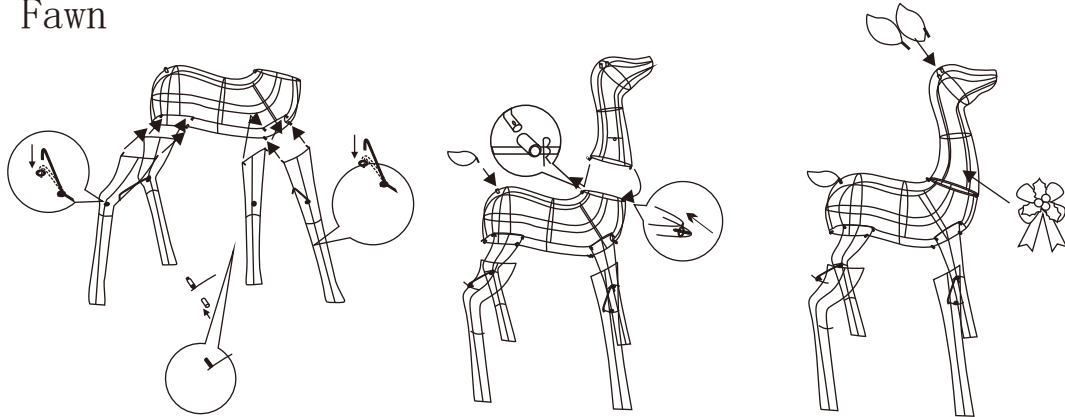


1. Unfold the product, install the deer leg on the iron pipe at the corresponding position, and then hook it in the corresponding circle;
2. Hook the head of the deer on the corresponding position of the deer body, insert the hook on the back into the corresponding iron pipe, then insert the bolt, and insert the tail into the corresponding iron pipe;
3. The antlers and ears shall be inserted into the corresponding iron pipes, and the bows shall be hung on the corresponding positions;
4. Finally, fix it with ground nails complete the assembly effect



1. Unfold the product, install the deer leg on the iron pipe at the corresponding position, and then hook it in the corresponding circle;
2. Hook the head of the deer on the corresponding position of the deer body, insert the hook on the back into the corresponding iron pipe, then insert the bolt, and insert the tail into the corresponding iron pipe;
3. The ear is inserted into the corresponding iron pipe, and the bow is hung on the corresponding position;
4. Finally, fix it with ground nails to complete the assembly effect

## Fawn



1. Unfold the product, install the deer leg on the iron pipe at the corresponding position, and then hook it in the corresponding circle;
2. Hook the head of the deer on the corresponding position of the deer body, insert the hook on the back into the corresponding iron pipe, then insert the bolt, and insert the tail into the corresponding iron pipe;
3. The ear is inserted into the corresponding iron pipe, and the bow is hung on the
4. Finally, fix it with ground nails to complete the assembly effect

## Accessories:



Floor nail



Latch

