

## Prestige - Single Handle Pull-out Kitchen Faucet



- \* Includes Stainless Steel Deck Plate for 1 or 3 Holes Installation
- \* 120° Swing Stainless Steel Tube Spout, Zinc Handle
- \* Matching Two Function Pull-out Sprayer
- \* Copper Waterway Construction with 1/2" -14 NPSM Connection
- \* Premium Grade Ceramic Cartridges (Type G)
- \* 60" Quick Connect Flexible Nylon Hose
- \* Floating Weight
- \* Flow Rate: 1.8 GPM
- \* 100% Pressure System Tested

Project / Job Name	
Architect / Engineer	
Contractor	
Model	
Quantity	

### Model No. :



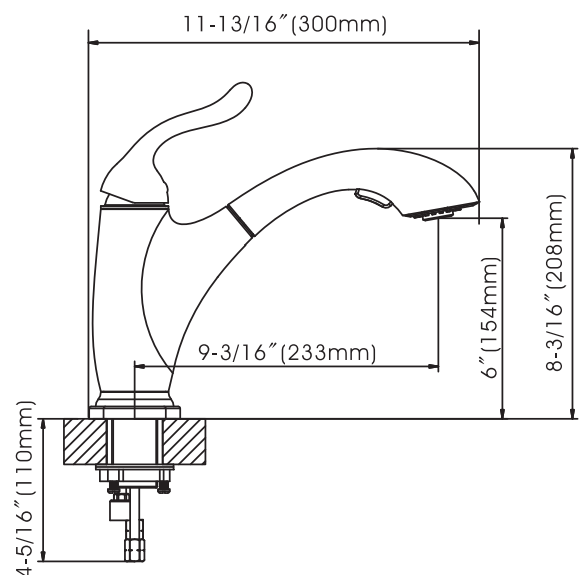
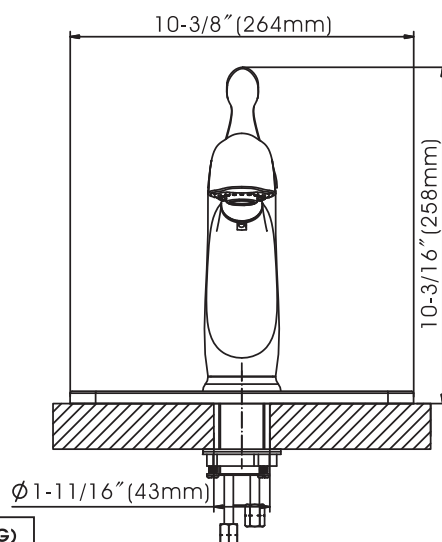
191-7719 (CH)



191-7720 (BN *Spotless PVD*)



191-7721 (ORB)  
(Shown Model)



Cartridge (Type G)



### Product Compliance:

- ASME A112.18.1 / CSA B125.1
- NSF 61 - Section 9
- NSF 372 (Low Lead Content)
- ANSI A117.1 (ADA)

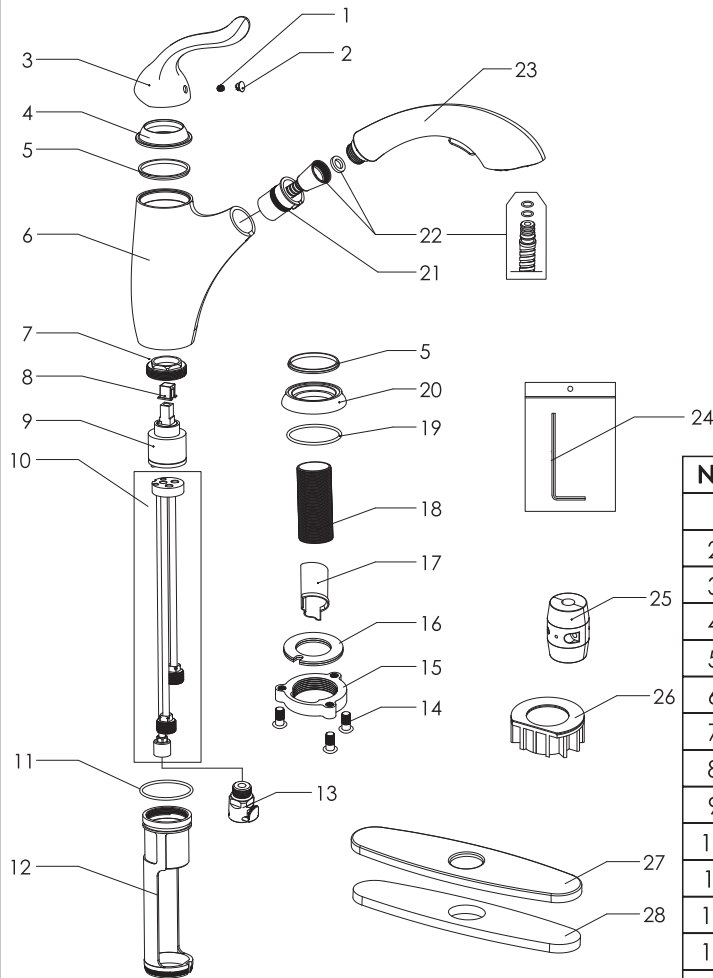
**Compass Manufacturing International LLC**

www.cmiproduet.com

6702 Enterprise Drive, Louisville, Kentucky 40214

Toll Free Number: 800-626-3525

# Prestige - Single Handle Pull-out Kitchen Faucet



## Model No. :

191-7719 (Polished Chrome)

191-7720 (Brushed Nickel **Spotless** PVD)

191-7721 (Oil-Rubbed Bronze)

No.	Part Name	Material
1	Set Screw	Stainless Steel
2	Index	Plastic
3	Handle	Zinc
4	Trim Cap	Brass
5	Washer	Plastic
6	Body	Zinc
7	Cartridge Lock Nut	Stainless Steel
8	Cartridge Adapter	Plastic
9	Cartridge	Ceramic
10	Waterway	Brass
11	O-Ring	Rubber
12	Waterway Sleeve	Zinc
13	Quick Connect Assembly	Plastic
14	Screw	Stainless Steel
15	Lock Nut	Zinc
16	Clamp	Rubber+Stainless Steel
17	Protective Sleeve	Plastic
18	Shank	Stainless Steel
19	O-Ring	Rubber
20	Hub Base	Zinc
21	Hose Guide	Plastic
22	Pull-Out Hose	Nylon
23	Spray	Plastic
24	Allen Key	Steel
25	Weight	Plastic+Brass
26	Plastic Base	Plastic
27	Deck Plate	Stainless Steel
28	Putty Plate	Sponge

Cartridge (Type G)



Technical Support: [warranty@cmiproduct.com](mailto:warranty@cmiproduct.com)  
Hour of Operation: Mon - Fri 8:30 a.m - 5:00 p.m. EST