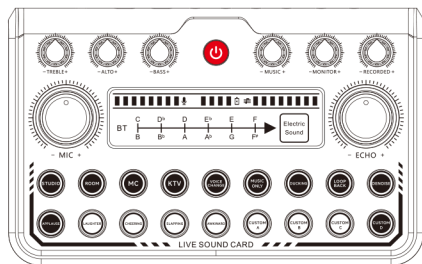


Live Sound Card User Manual



I. Product profile

Hello, dear customer. Thank you for buying our products.

Before formal use, please read the manual carefully to ensure the correct use of this product and the proper preservation of the manual for future use. This product is a professional singing live mixer, built-in digital DSP chip: support all live broadcast platform, support mixing switch, simple input mute control, reverberation melodies, text quality shouting wheat, special effect sound, TYPE-C computer connection, perfect to solve the diverse needs of mobile phone and computer live users!

II. Packaging list host

| | |
|-----------------------------|----|
| Sound card | x1 |
| Data line | x1 |
| Live line | x2 |
| Product description product | x1 |

III. System requirements

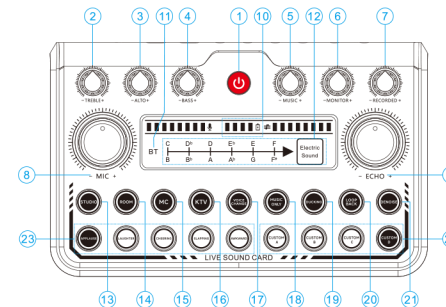
Android, IOS, Windows are fully compatible

IV. Software support

Sing APP: national Kou, cool I sing, KuGou music, Baidu music, sing bar, sing and so on.

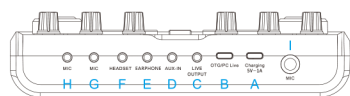
Live broadcast APP: Reflecting guests. Pepper, YY, Douyu, The whole people TV, Kuaishou, TikTok, Tiger teeth and so on.

V. Schematic diagram of the mainframe



1. Power supply: Long press for 3 seconds to turn on/off.
2. Treble: Adjust the treble of the microphone, turn left to reduce the treble, turn right to increase the treble.
3. Alto: To adjust the midrange of the microphone, turn the midrange to the left to reduce the midrange, and rotate it to the right to strengthen the midrange.
4. Bass: Adjust the bass of the microphone, turn left to reduce the bass, turn right to increase the bass.
5. MUSIC: Adjust the volume of the accompaniment, accompaniment indicator will change accordingly.
6. Monitor: Adjust the monitor volume, the monitor sound will change accordingly.
7. Record: Adjust the recording volume, the recording sound will change accordingly.
8. Mic: Adjust the volume of the microphone, and the indicator light of the microphone will change accordingly.
9. ECHO: Adjust the volume of the reverb, the reverb indicator will change accordingly.
10. Battery indicator light: Display the battery level, allowing for a clear understanding of the battery usage of the sound card during use.

11. Wireless accompaniment indicator light: The power on indicator light flashes, and after successful connection, the indicator light remains on.
12. Electric Sound: Tap to switch between different electronic tones, and the corresponding indicator light will light up.
13. STUDIO: Scene mode, the indicator light indicates that it has been switched to this mode.
14. ROOM: Scene mode, the indicator light indicates that it has been switched to this mode.
15. MC: Scene mode, the indicator light indicates that it has been switched to this mode.
16. KTV: Scene mode, the indicator light indicates that it has been switched to this mode.
17. Voice change: Short press to switch between different sound effects, including male, female, doll, and monster sounds.
18. MUSIC ONLY: When turned on, the vocals in the computer or external accompaniment and Bluetooth accompaniment will be eliminated, and when turned off, the vocals in the accompaniment will be retained; (requires a stereo source).
19. Ducking: When turned on, the vocals will be highlighted, and the sound of the musician will become smaller. When turned off, the music and the vocals are balanced.
20. LOOP BACK: When turned on, the sound played by the computer can be recorded back to the computer. When the computer is turned off, the sound played by the computer can only be monitored and cannot be recorded back to the computer.
21. Denoise: When the noise reduction function is turned on, the external noise is more obvious in the earphone, and there is no external noise when it is turned off.
22. Custom sound effects: Long press to record favorite music as special effects, short press to play.
23. Special effect sound: Contains 5 special effects sounds, short press to play different sound effects.



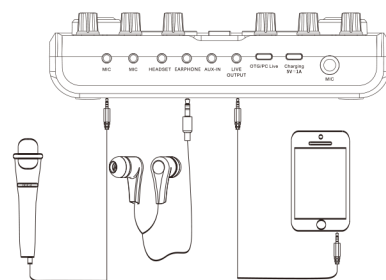
- Charging: This interface can charge sound cards. Please choose a regular 5V/1A charging head.
- OTG/ PCLive: For live computer broadcast.
- Live: Connect to mobile phone live broadcast, recording, singing.
- AUX-IN: The accompaniment line connected to the 3.5mm plug.
- Earphone: Headphones connected to 3.5mm plugs.
- Headset: The headset connected to the 3.5mm plug.
- MIC: Capacitor microphone connected to 3.5mm plug.
- MIC: Capacitor microphone connected to 3.5mm plug.
- MIC: Connect 6.35mm dynamic microphone.

VI. Specification parameters

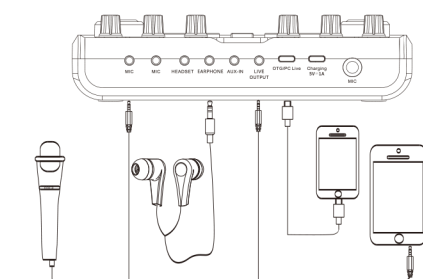
| Specification parameter | | | |
|----------------------------|---|--|------------------|
| Channel system | Output sampling rate | Sampling bits | Use scene |
| Double channel | 44.1KHZ | 16bit | Home Outdoor |
| Weight | Knob | Button | Size |
| 370g | 8 piece | 20 piece | 192*119*49MM |
| Indicator | USB and live interface | Audio interface | |
| 55 piece | Digital communication / charge / live accompaniment | Accompaniment, musical instrument, earphone, headset, condenser microphone | |
| Main battery specification | | | |
| Capacity | Electricity consumption | Charging voltage | Charging current |
| 1200mAh | 220mA | DC 5V | 1A |

VII. Seven, schematic diagram of the connection process

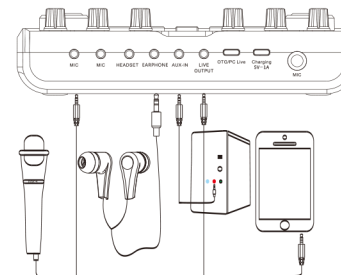
1. Mobile phone recording, live broadcast



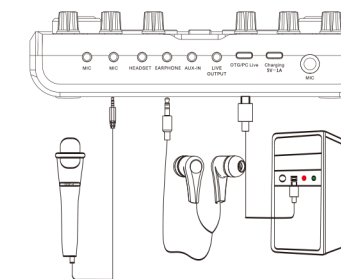
2. Dual mobile phone live broadcast



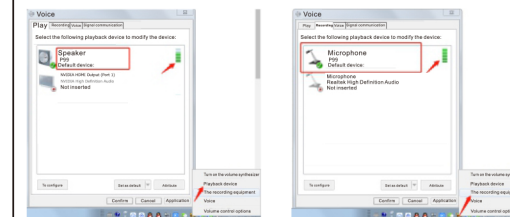
3. Mobile phone live computer accompaniment



4. Computer live broadcast



VIII. Computer accompaniment and computer live debugging diagram



After the sound card is connected to the computer and the computer has recognized the sound card

(1) connect the computer to the host computer with the Micro USB cable, click the small horn in the lower right corner of the computer, and right-click to open the "playback device". If the loudspeaker shows "P99" and is the default device, that is, the sound card driver has been installed successfully and has been recognized by the computer.

(2) Computers or other devices that support OTG function and standard USB protocol all support connection with sound card.

IX. Charging connection

