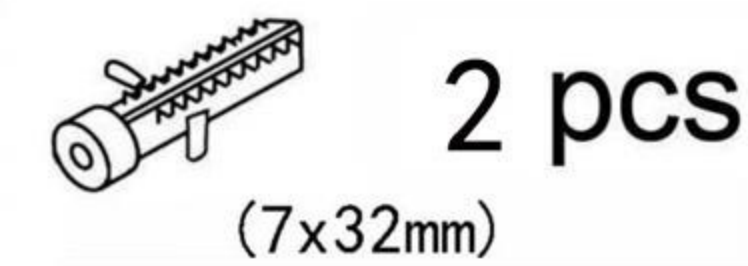
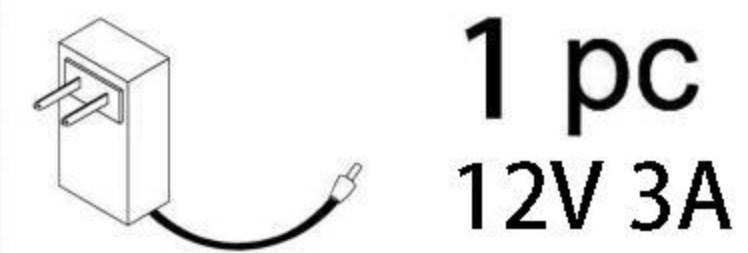


User Manual



**Thank you
for purchasing!**

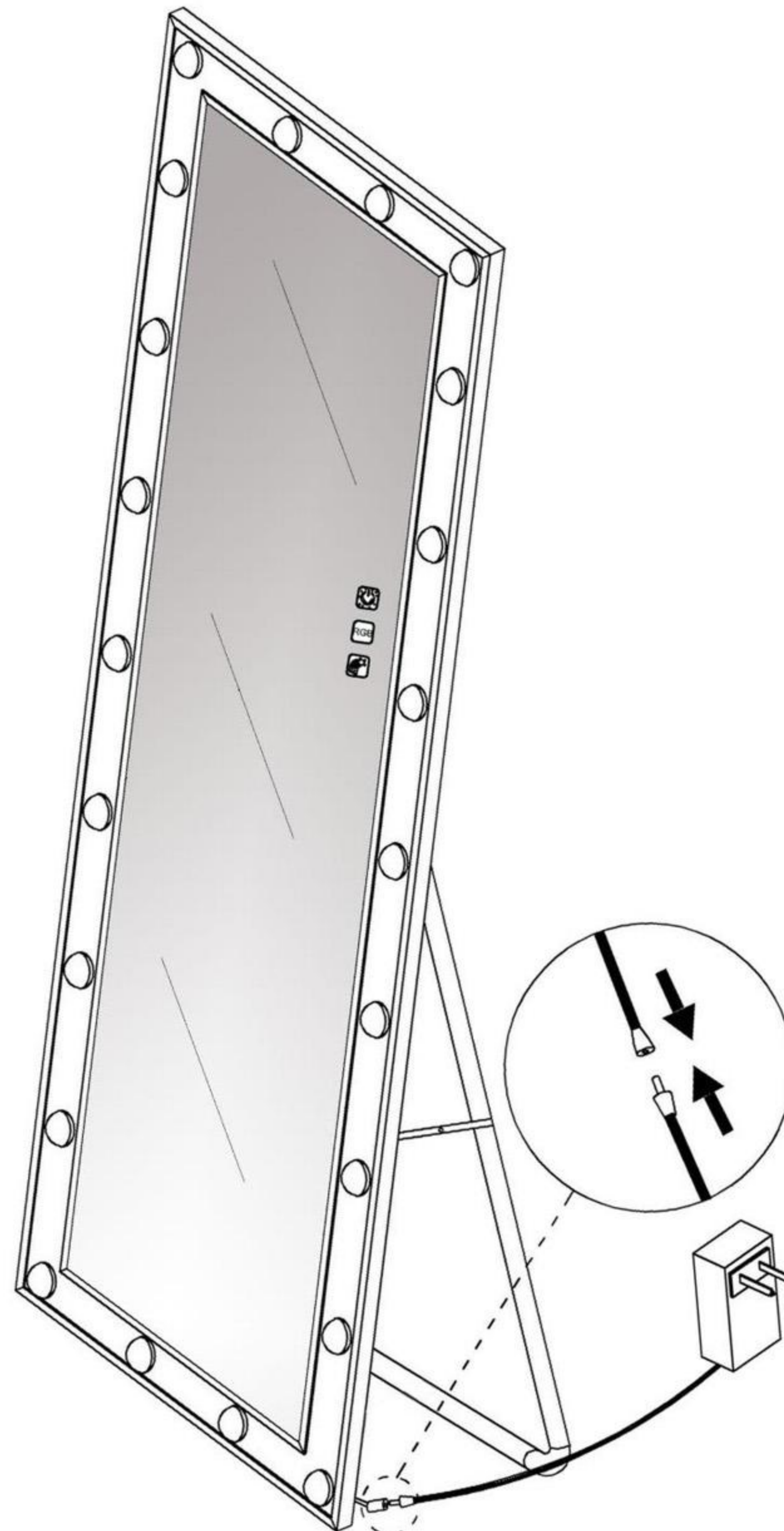


If you have any
questions,
or if there are any
problems
with the product,
please **contact us**
directly via email,

we will provide
you with a 100%
satisfactory solution.

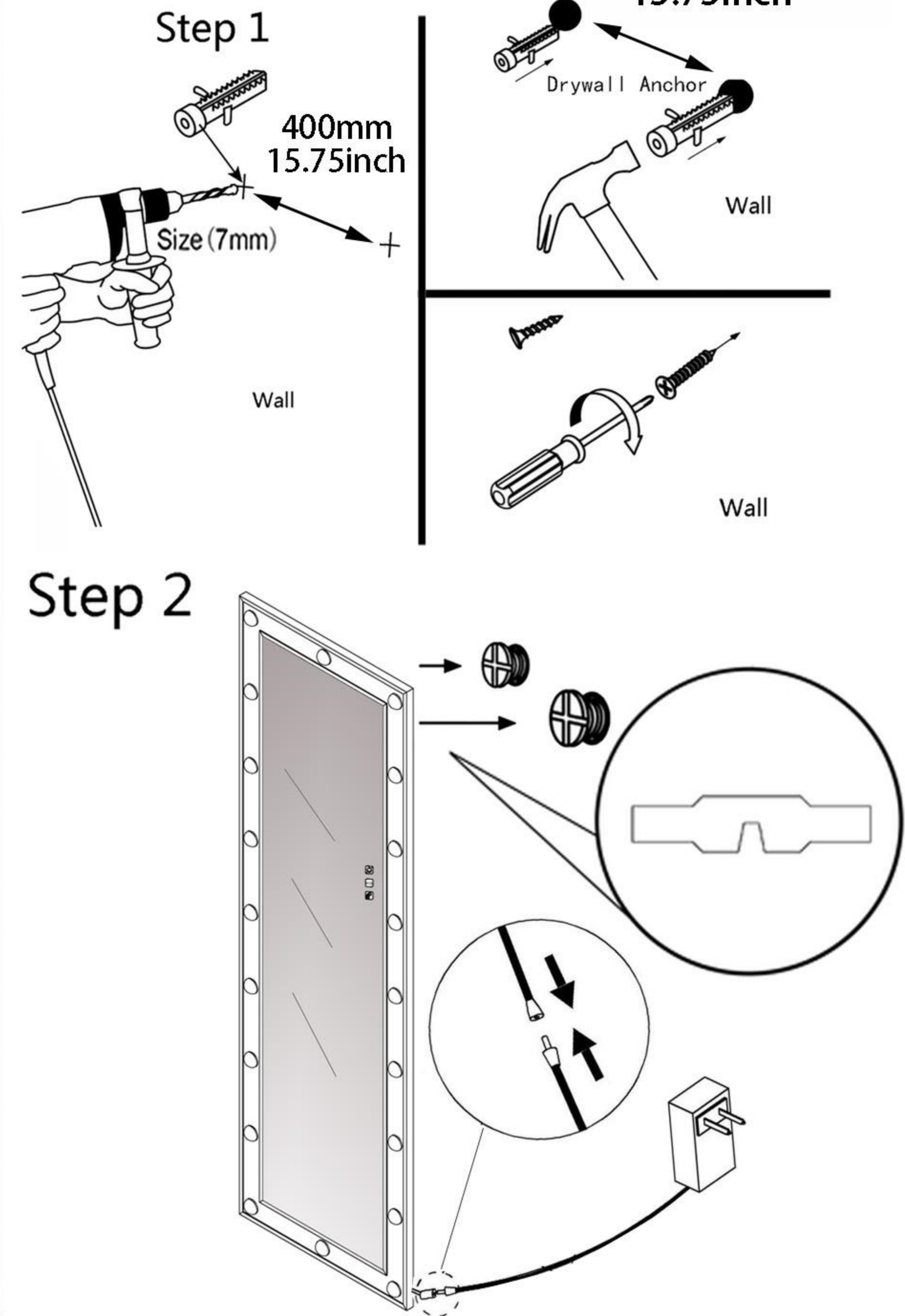


Option 1



The stand is pre-assemble.
Open the stand and start to use.

Option 2



Touch button description



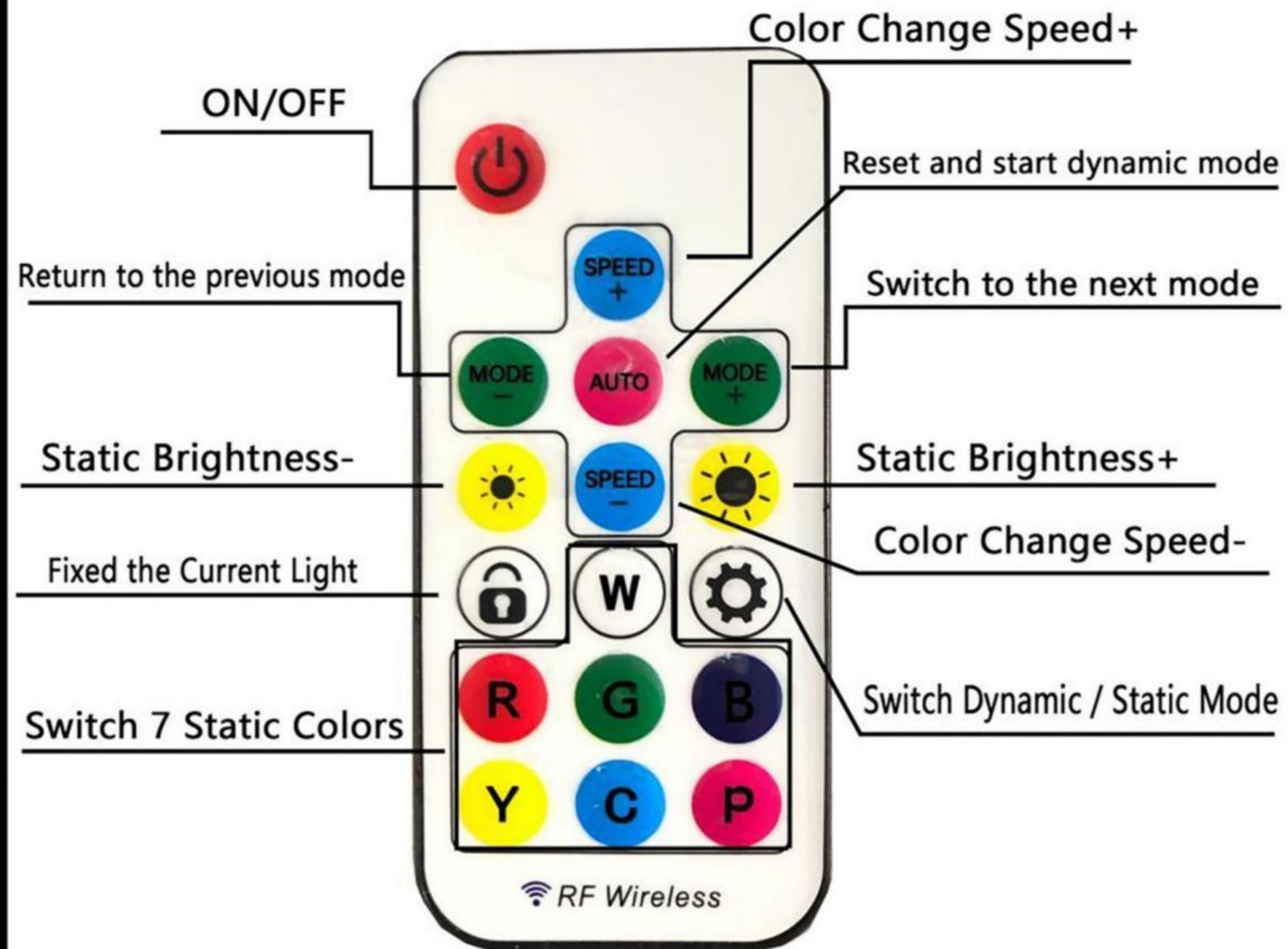
1. ON/OFF



2. Static Light Mode
(Long press to adjust brightness)



3. Dynamic Mode
(Long press to adjust speed)



LED Lights Controller-use instructions

Remote Battery: CR205 3V

How to use the controller?

1. After inserting the DC power adapter, you can use the remote control to control the lamp. Press the "on/Off" button to turn on the light and enter the static light mode. Long press the "on/Off" button to turn off the light.

2. There are 7 RGB Dynamic Modes. You can press the "MODE+/-" key to choose dynamic colors that you preferred and press the "Speed+/-" key to adjust color change speed.

3. There are 7 static colors: White / Red / Green/ Blue / yellow / ice blue/ pink light. You can press the "Brightness +/-" key to adjust the brightness.

4. You can press the "lock" key to fix the color you like. When you press the "Switch Dynamic /Static Mode" key, the light will change between dynamic mode and static mode.