

# 1135 RADIUS CORNER HINGE

3.5" X 3.5" - 5/8" RADIUS CORNER



## SPECIFICATIONS

PIN TYPE	Removable
RADIUS	5/8"

# 1135 RADIUS CORNER HINGE

3.5" X 3.5" - 5/8" RADIUS CORNER



## ESTATE PORTFOLIO

Model Number:  
1135.044.1

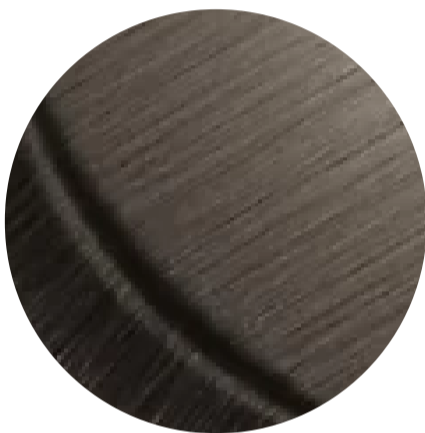
## Key Features

- ✓ 1/4" Radius Corner Hinge is beveled on the inside leaf to obtain a tight fit when viewing the hinge in a closed position.
- ✓ 3.5" x 3.5"
- ✓ Machined for precise installation and smooth movement and furnished with stainless steel, rust-proof pins for added durability.
- ✓ Baldwin's Satin Brass is a smooth, matte finish with golden, warm tones. This Lifetime Finish is created to add a subtle gleam to the hardware for years to come, and comes with a Limited Lifetime Finish Warranty.

## FINISHES OPTIONS



Lifetime (PVD) Satin Nickel - 056



Lifetime (PVD) Graphite Nickel - 076



Lifetime (PVD) Polished Nickel - 055



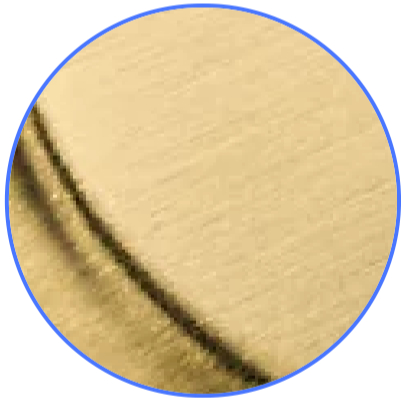
Polished Chrome - 260



Distressed Oil Rubbed Bronze - 402



Lifetime (PVD) Polished Brass - 003



Lifetime (PVD) Satin Brass - 044



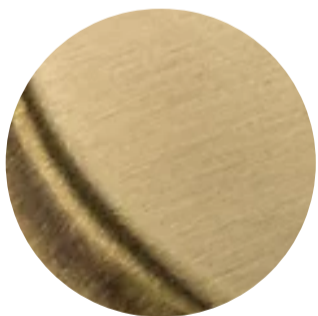
Satin Black - 190



Oil Rubbed Bronze - 102



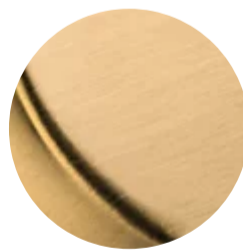
Venetian Bronze - 112, 11P



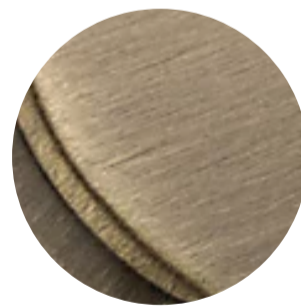
Satin Brass & Brown - 060



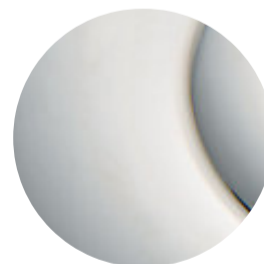
Non-lacquered Brass - 031



Vintage Brass - 033



Satin Brass & Black - 050



Polished Nickel - 140

*all measurements in inches*

## SPECIFICATIONS

PIN TYPE Removable

RADIUS 5/8"