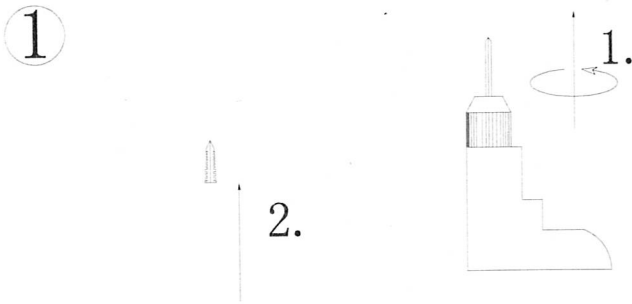


# INSTALL INSTRUCTION

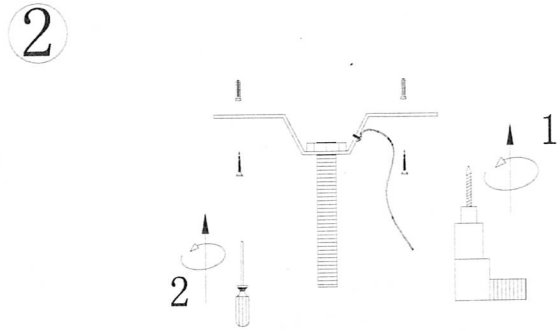
Model: OC21C20CH

Ceiling



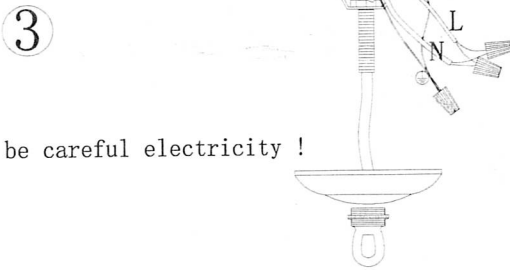
First of all, the lamp out, determine the installation position, and then use the drill hole and buried plastic house lizard.

Ceiling



Second, the lamps and lanterns hanging plate fixed on the wall by the self tapping screws.

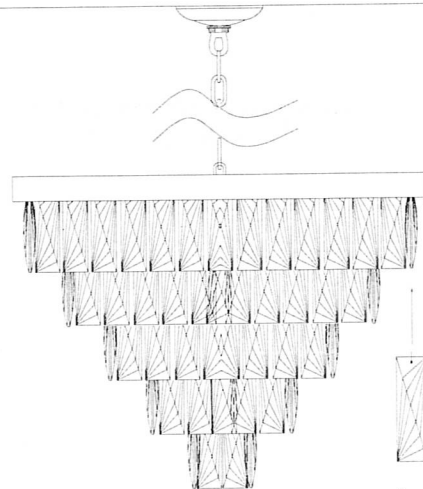
Ceiling



be careful electricity !

Third, the lamp is connected by three connection station power line, pay attention to connect power line pole and wire.

5



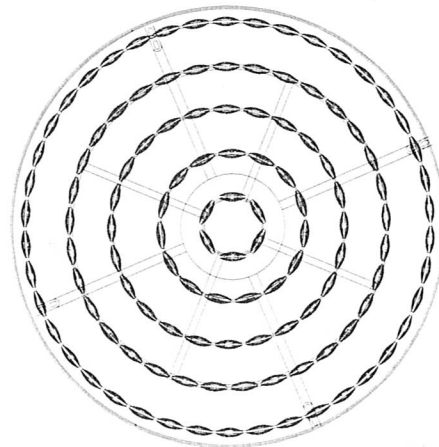
A=120PCS

Ceiling



Be Careful for Your Hand !

Fourth, the lamp ceiling plate fixed on the hanging plate, and then torn off lights stainless steel protective film.



Warning:

1. Please wear gloves during the installation.
2. Do not install on ceiling which is damp or with wet limewater.
3. Cut off the electricity before installation in case of being shocked.
4. Make sure the connected bolt is tightly locked



5. Do cut off the electricity before washing or repairing, and use the scour without causticity.
6. Please cut off the electricity and wait until the bulb gets cooling before replacing the bulb in case of being burned