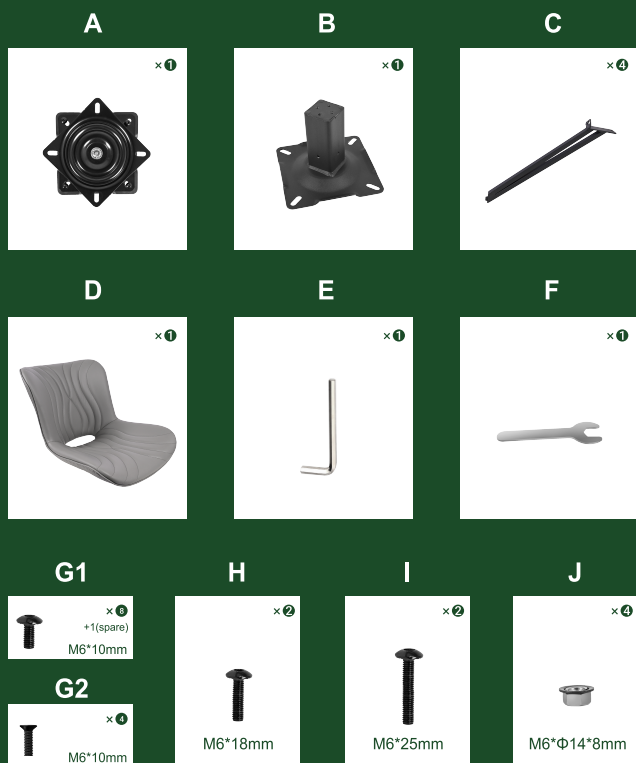


⚠ WARNING

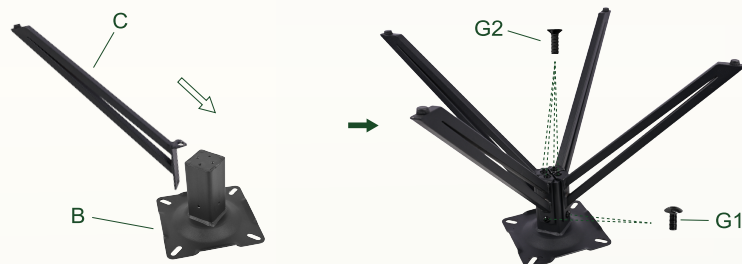
- Read and understand all instructions. Failure to follow all instructions listed below, may result in product damage.
- Before assembly, check all components in the package. Make sure you have hard-wares for operation.
- Please keep your personal property away during the installation to avoid any damage.

Each package contains TWO chair. The following display shows the components for ONE chair.



1

Attach the 4 metal legs (C) to the seat plate (B) using bolts (G1,G2). Tighten all bolts.



2

Rotate the swivel base (A) to align the holes 90 degrees for easier installation. Secure the swivel base (A) to the seat plate (B) with bolts (G1) and nuts (J).



3

Flip the seat cushion (D) over and attach the assembled base to the seat cushion. Use bolts (I) for the front two holes and bolts (H) for the rear two holes (near the backrest).



MAINTENANCE INSTRUCTION

Clean with dry cloth. Wipe with neutral detergent. **DO NOT USE** the product when it is unsafe for sitting.

CUSTOMER SERVICE INFO

If you have any product related problems during your assembly or use, we will provide faithful solutions for you.