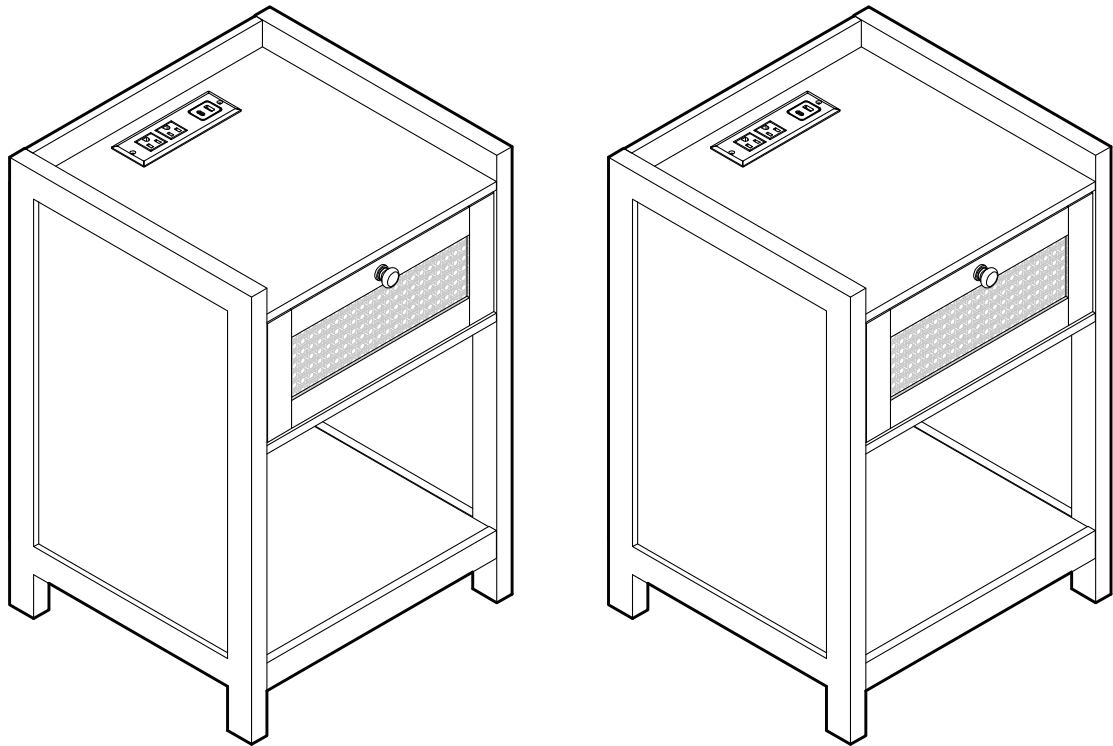


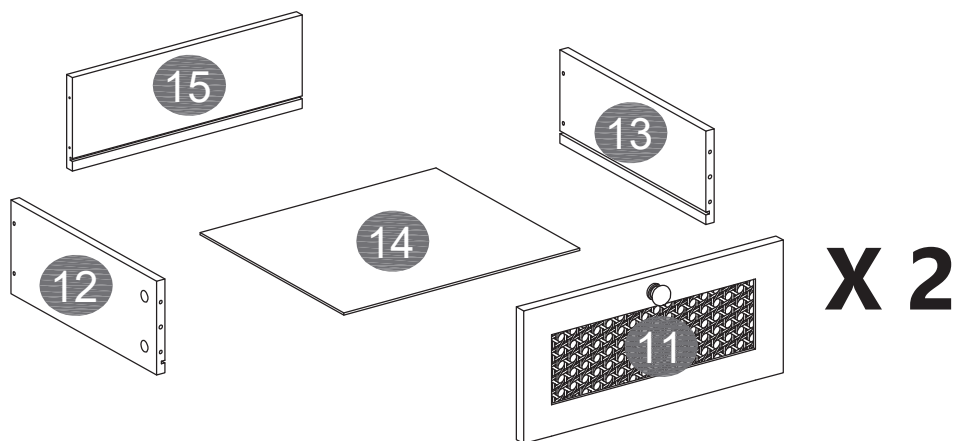
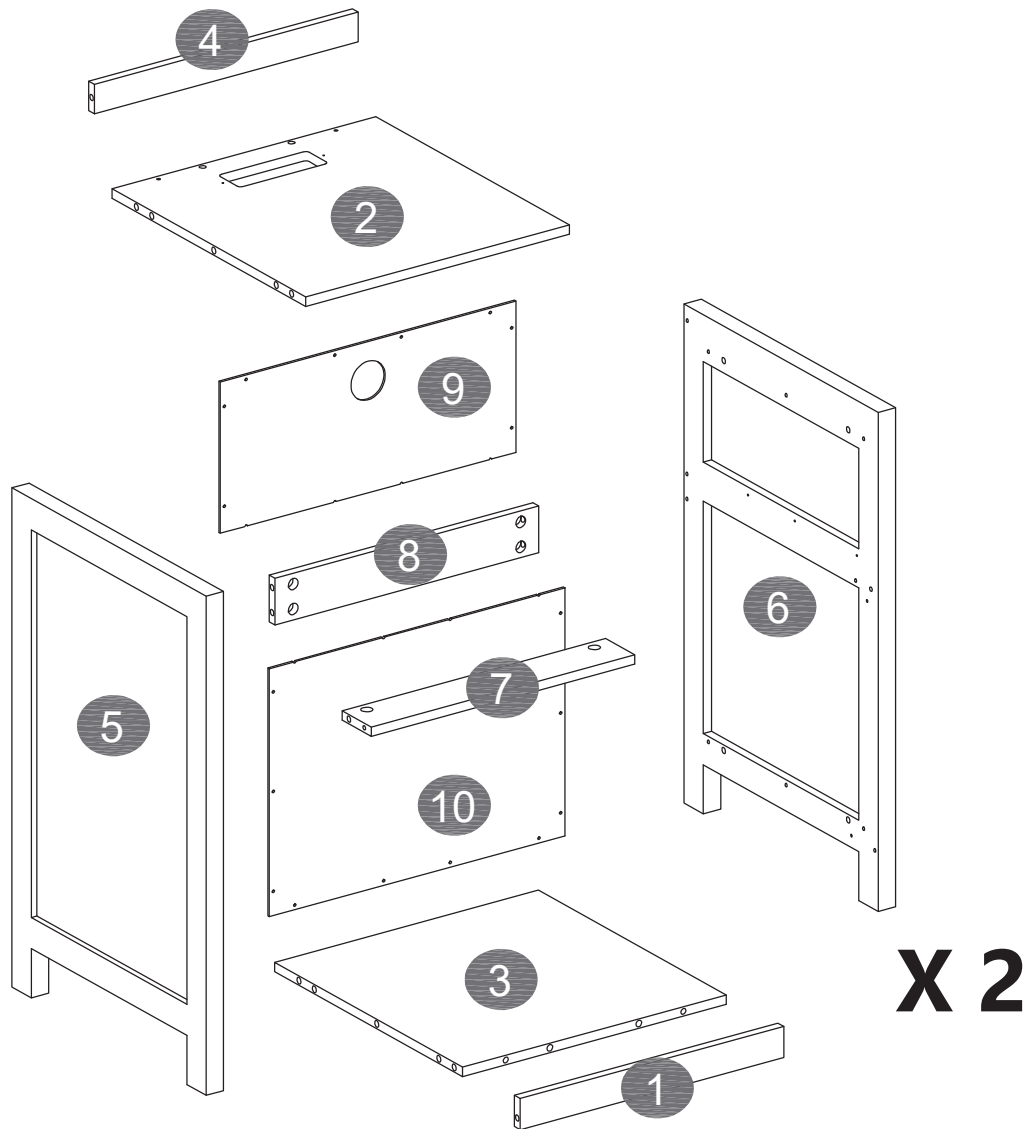
CUSTOMER MANUAL

-V0.1



If you have any questions,
please contact us.

ASSEMBLY STRUCTURE REFERENCE DIAGRAM



PARTS

A



X 56+2

B



X 56+2

C



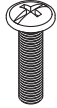
Ø6 x 30mm
X 32+2

D



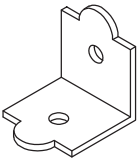
X 2

E



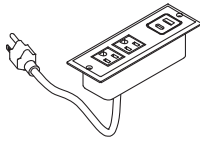
M4 x 22mm
X 2

F



X 8

G



X 2

H



ST3 x 12mm
X 4

I



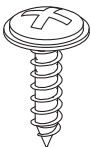
ST3 x 12mm
X 40+2

J



ST4 x 35mm
X 12+2

K



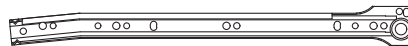
X44+2

M

CL X 2



CR X 2



DL X 2

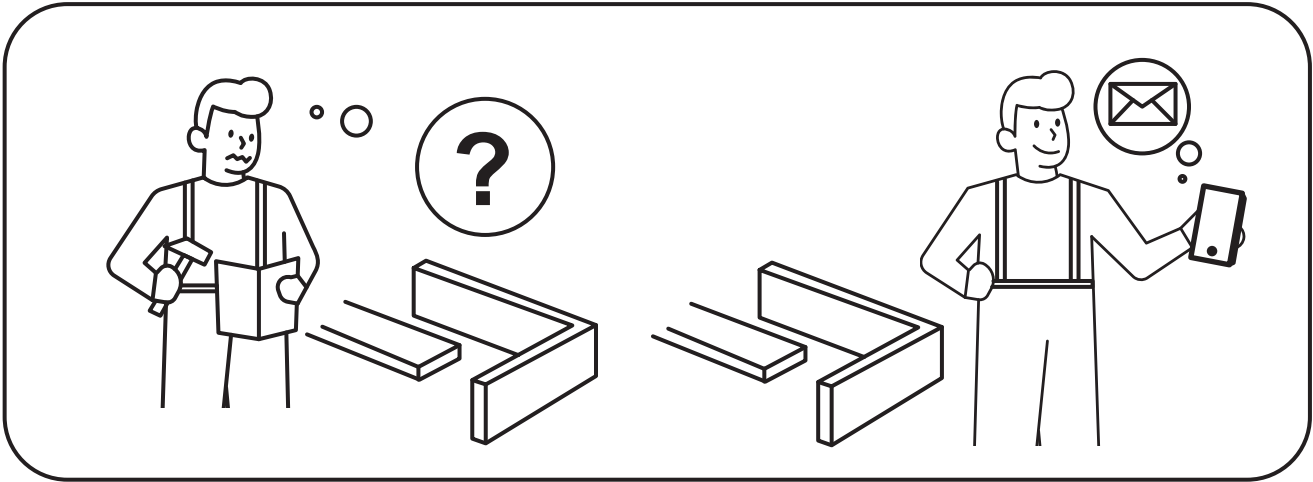
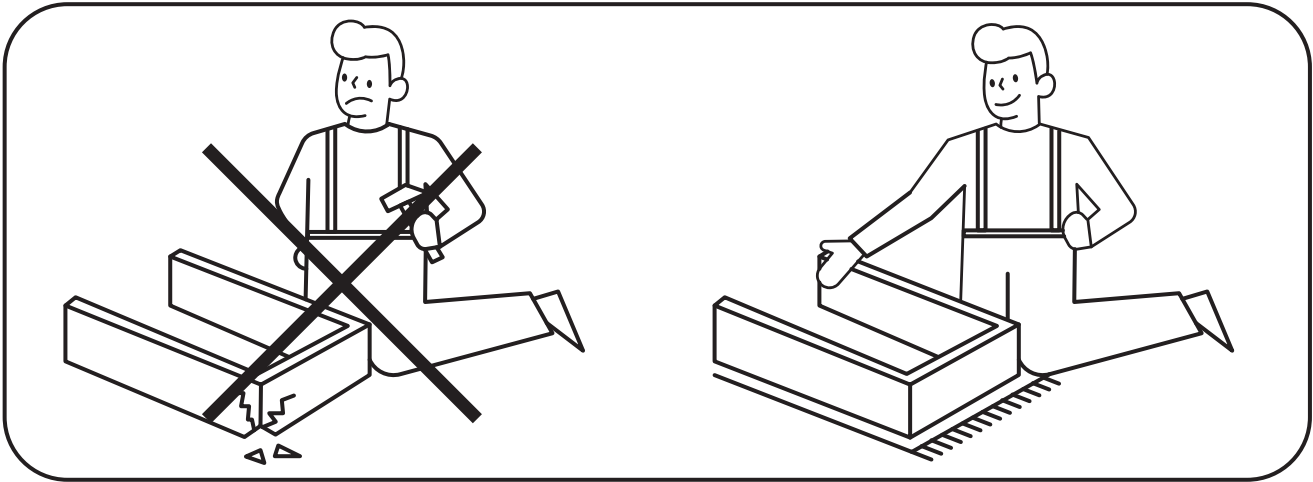
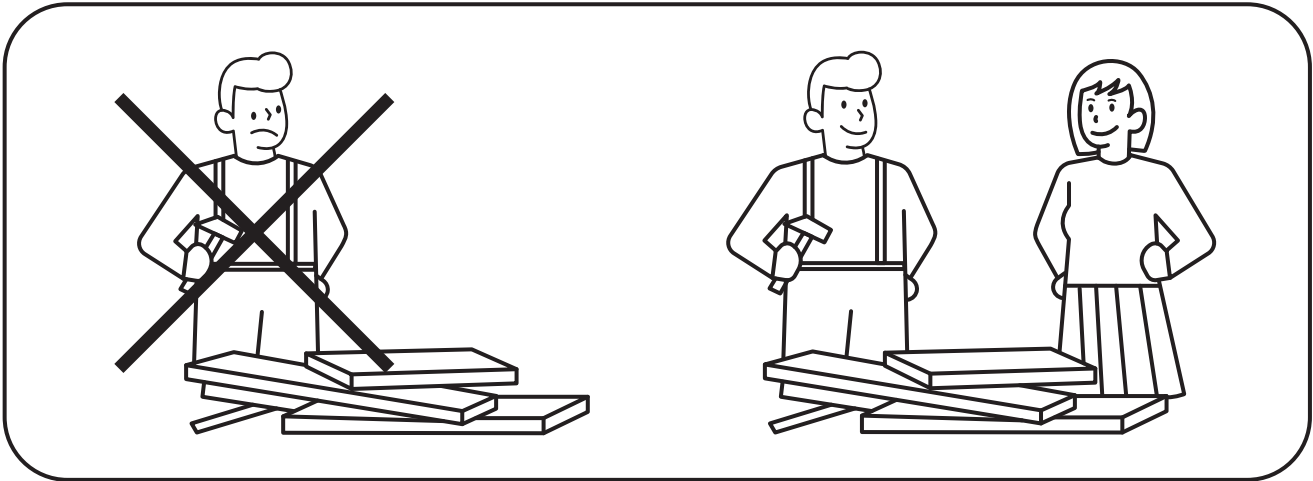
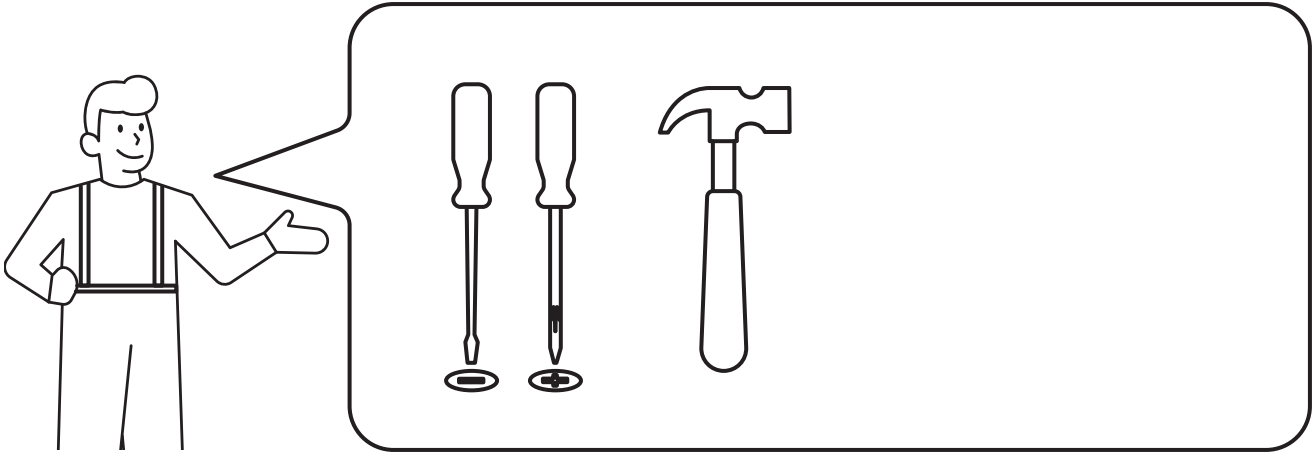


DR X 2

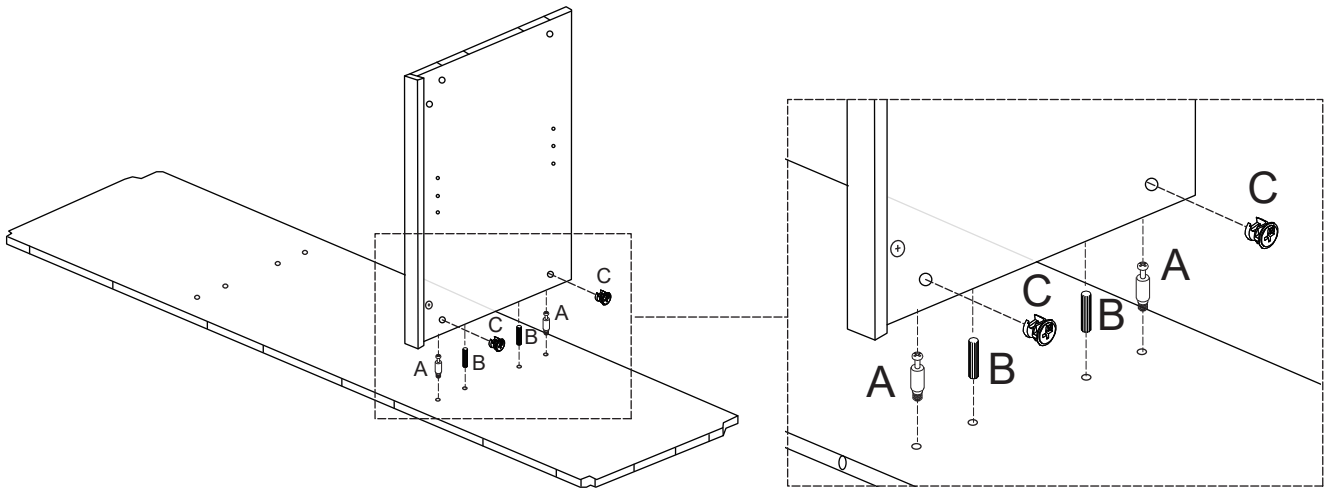


Attention: there are 4 kinds of slides in our product, in which 2 are **Boards slides**, which marked as **CL & CR** and contains 2 pieces respectively, and the other 2 are the **Drawer slides**, which marked as **DL & DR** and contains 2 pieces respectively.

The hardware quantities listed above are required for proper assembly. Some extra hardware may also have been included.

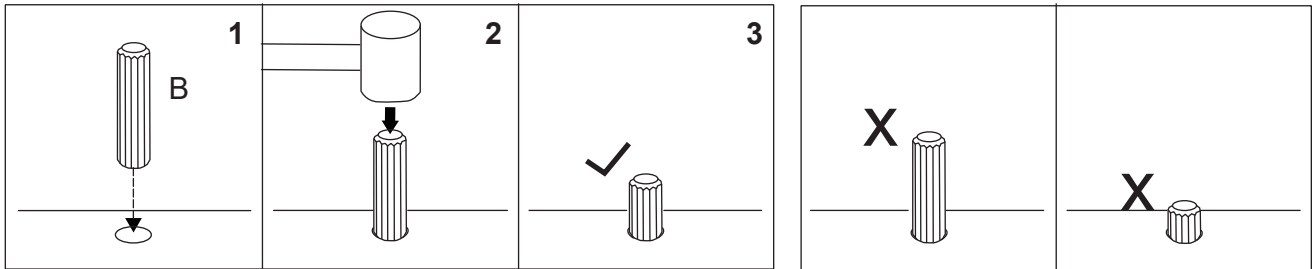


How to work the Knock Down (kd) assembly system

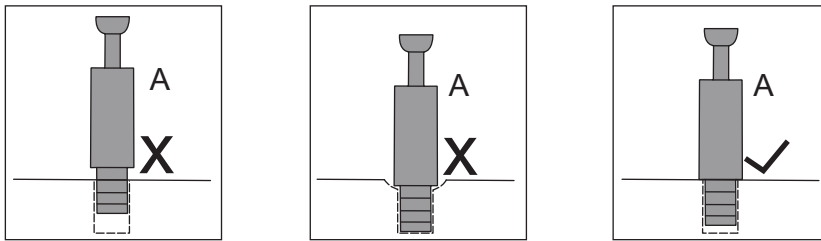


How to install Wood Dowel

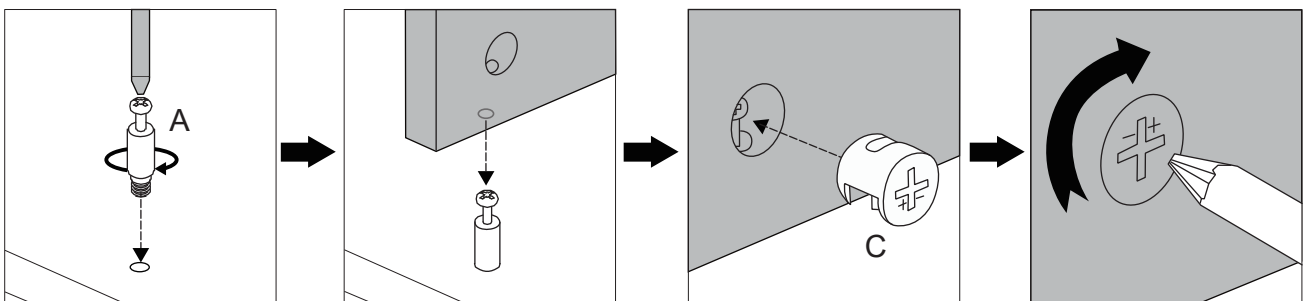
Insert the wood dowel [B] at least half way by tapping lightly with a rubber mallet, IF NECESSARY.



How to use the Cam Lock system



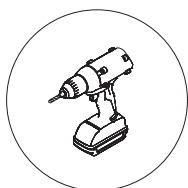
1. Screw the cam bolt [A] into the threaded insert on the panel.
2. Connect both panels together making sure cam bolt [A] goes into the pre-drilled large hole on the end of panel for cam lock [C].
3. Insert the cam lock [C] into the pre-drilled large hole on the panel. **Make sure the cross slot of cam lock [C] faces out.**
4. Rotate the cam lock [C] **clockwise** with a self-supplied philips screwdriver to lock the cam bolt [A] in place.



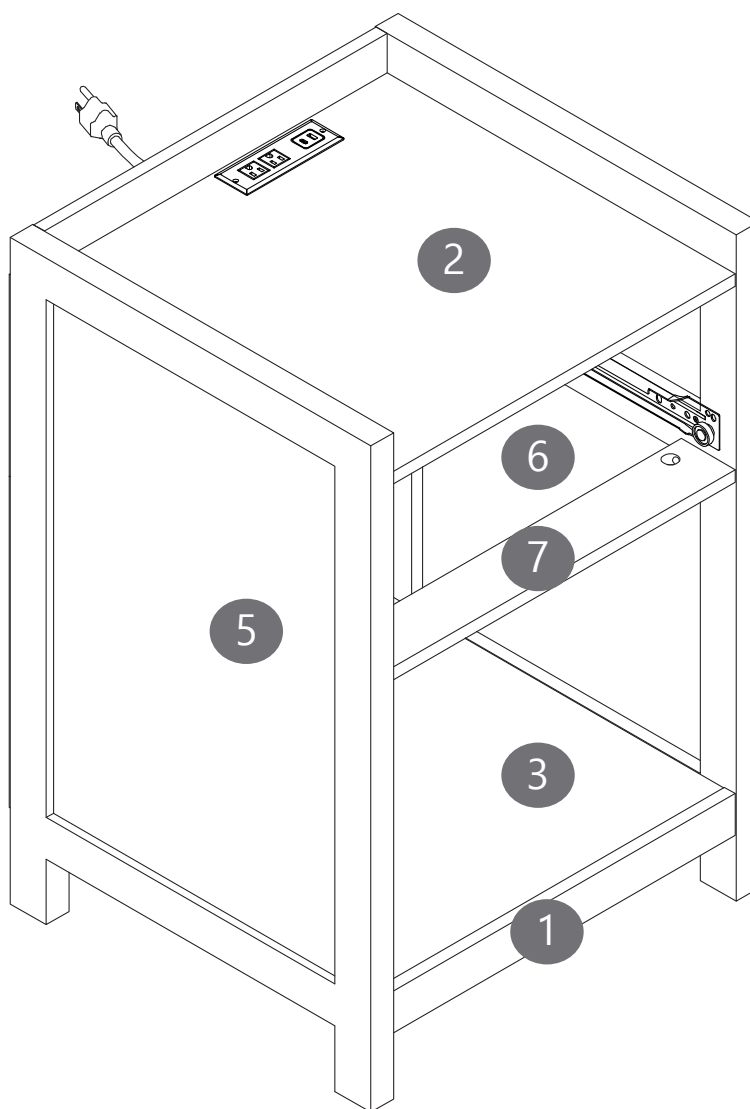
Before installing the product, observe the general structure.

It is divided into 5 parts in total:

1. Install the Boards and Slides (⑤&⑥)
2. Install the Top Panel (②) & Frame Part (①&③&⑦&⑧)
3. Install the Back Panel (⑨&⑩)
4. Install the Drawers
5. Install the Drawers Slides

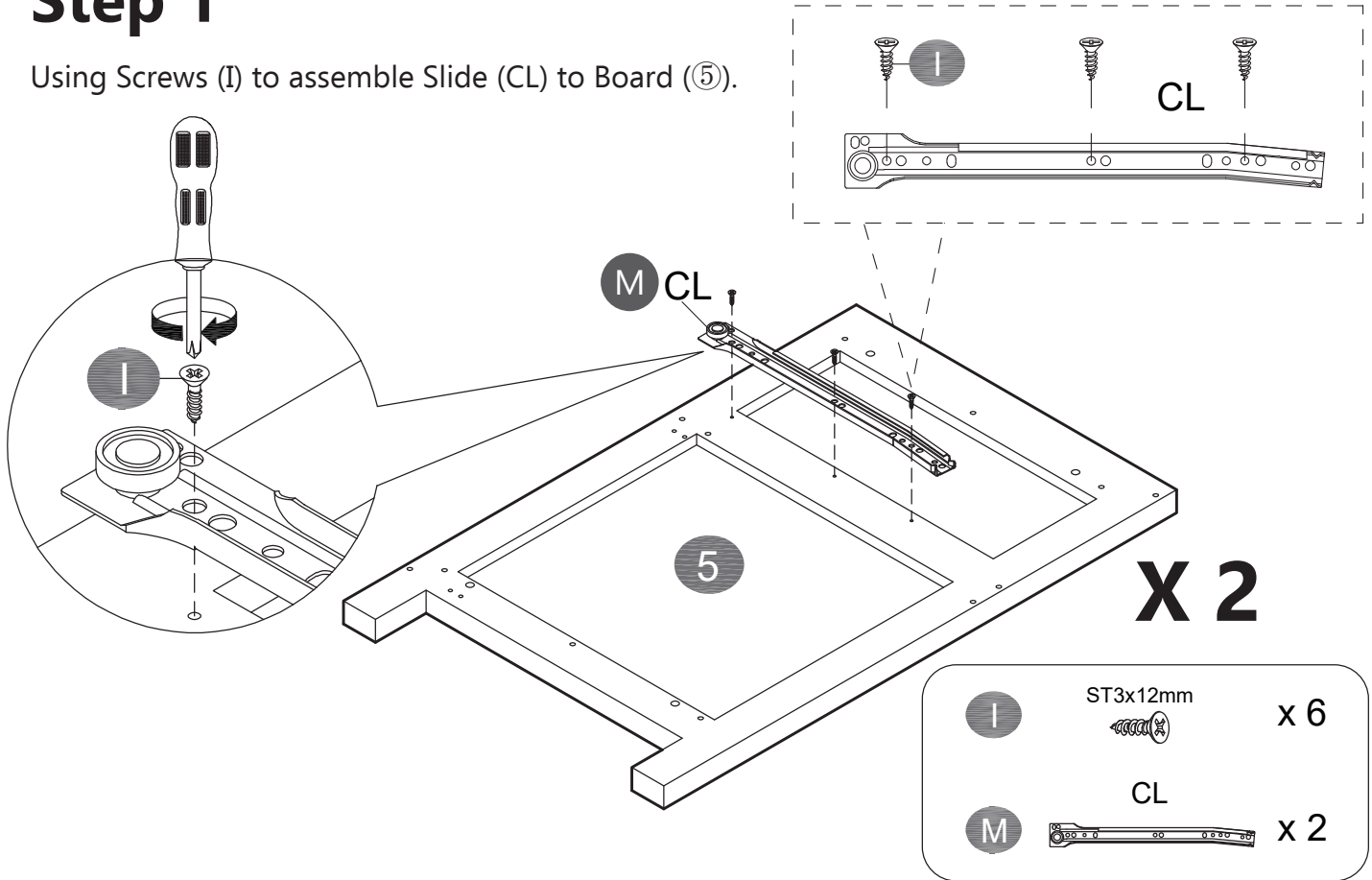


We recommend using a power drill to assemble.



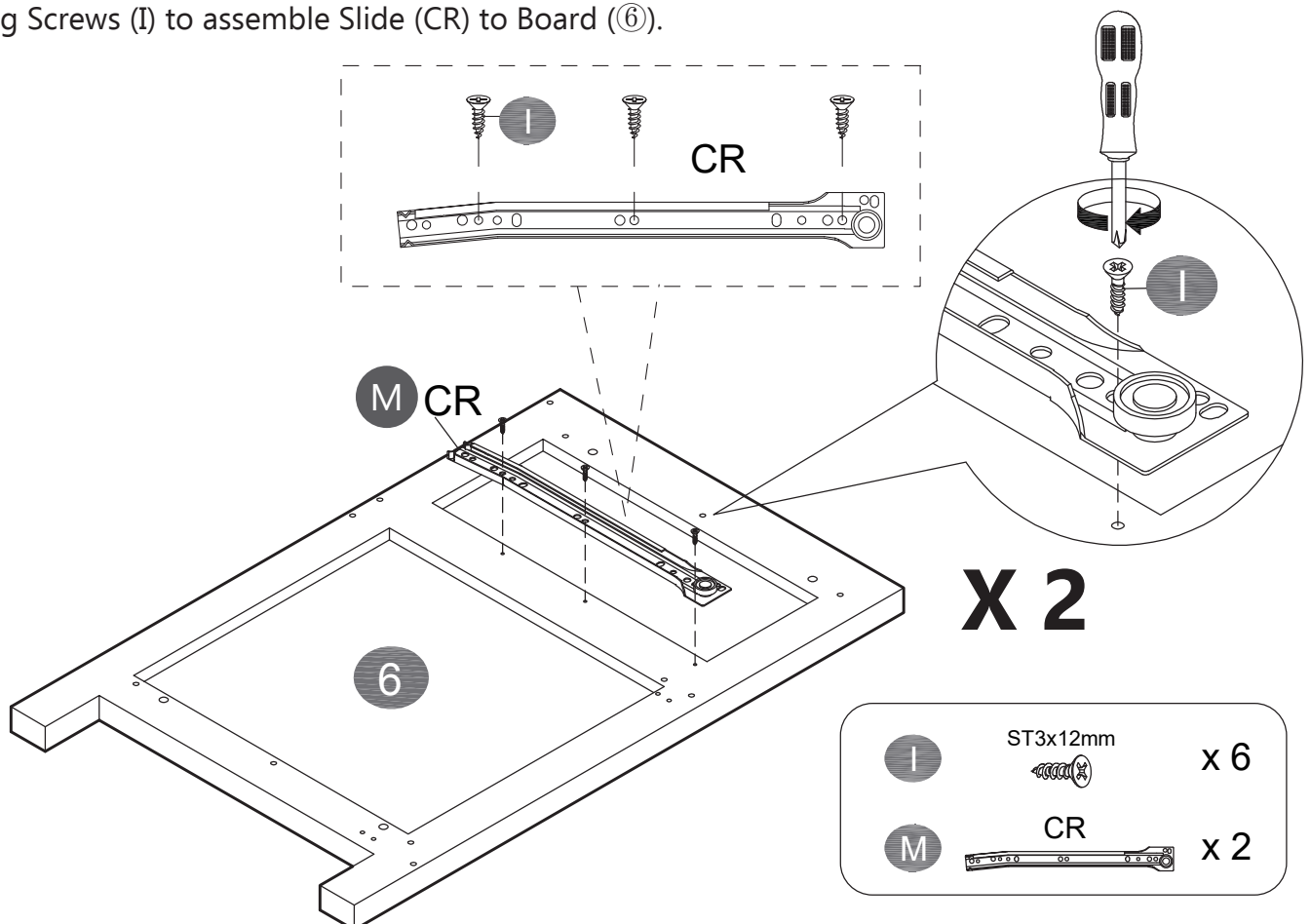
Step 1

Using Screws (I) to assemble Slide (CL) to Board (5).



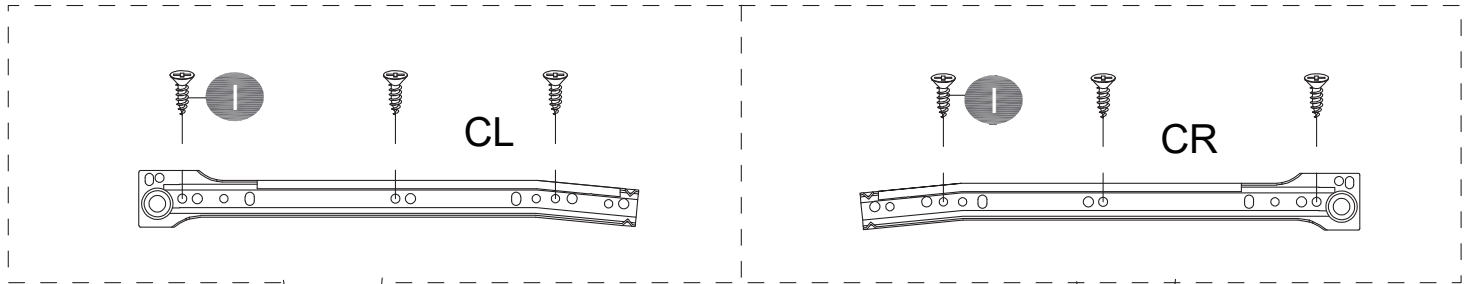
Step 2

Using Screws (I) to assemble Slide (CR) to Board (6).

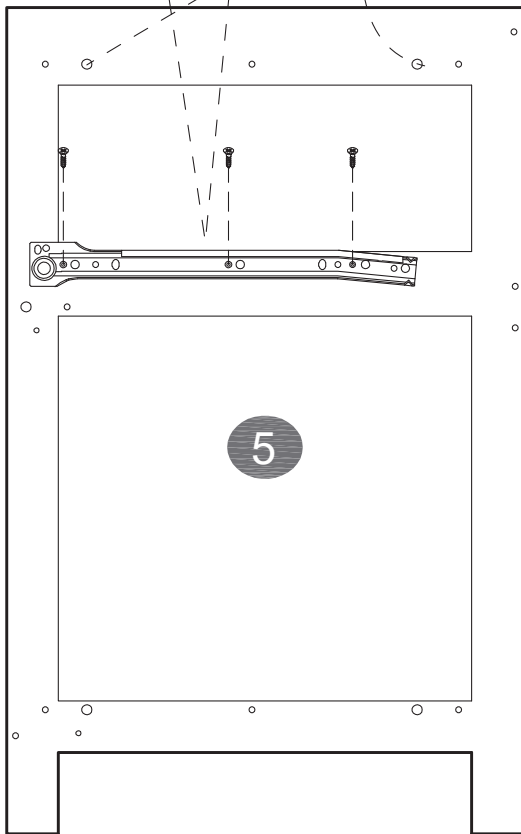


Display. Non-installation steps

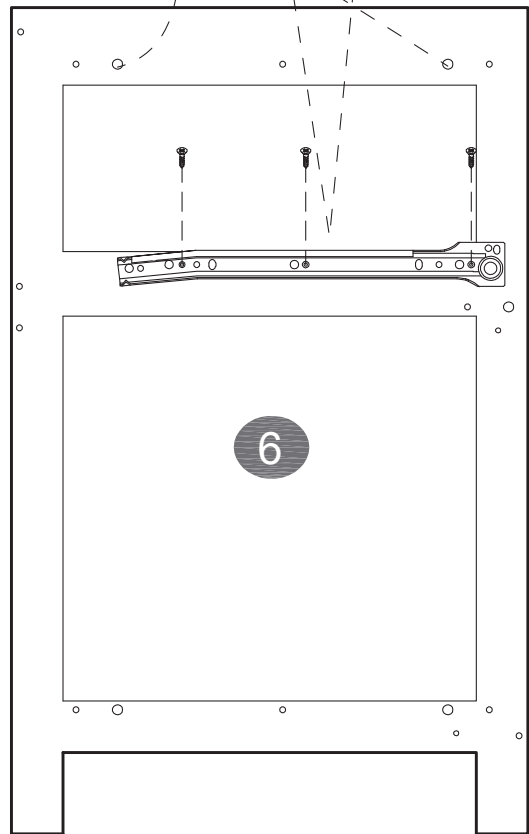
Reference to the completion of the installation:
checking the position of the slides and screws in the board.



Please make sure the pre-drilled
holes are on the top.



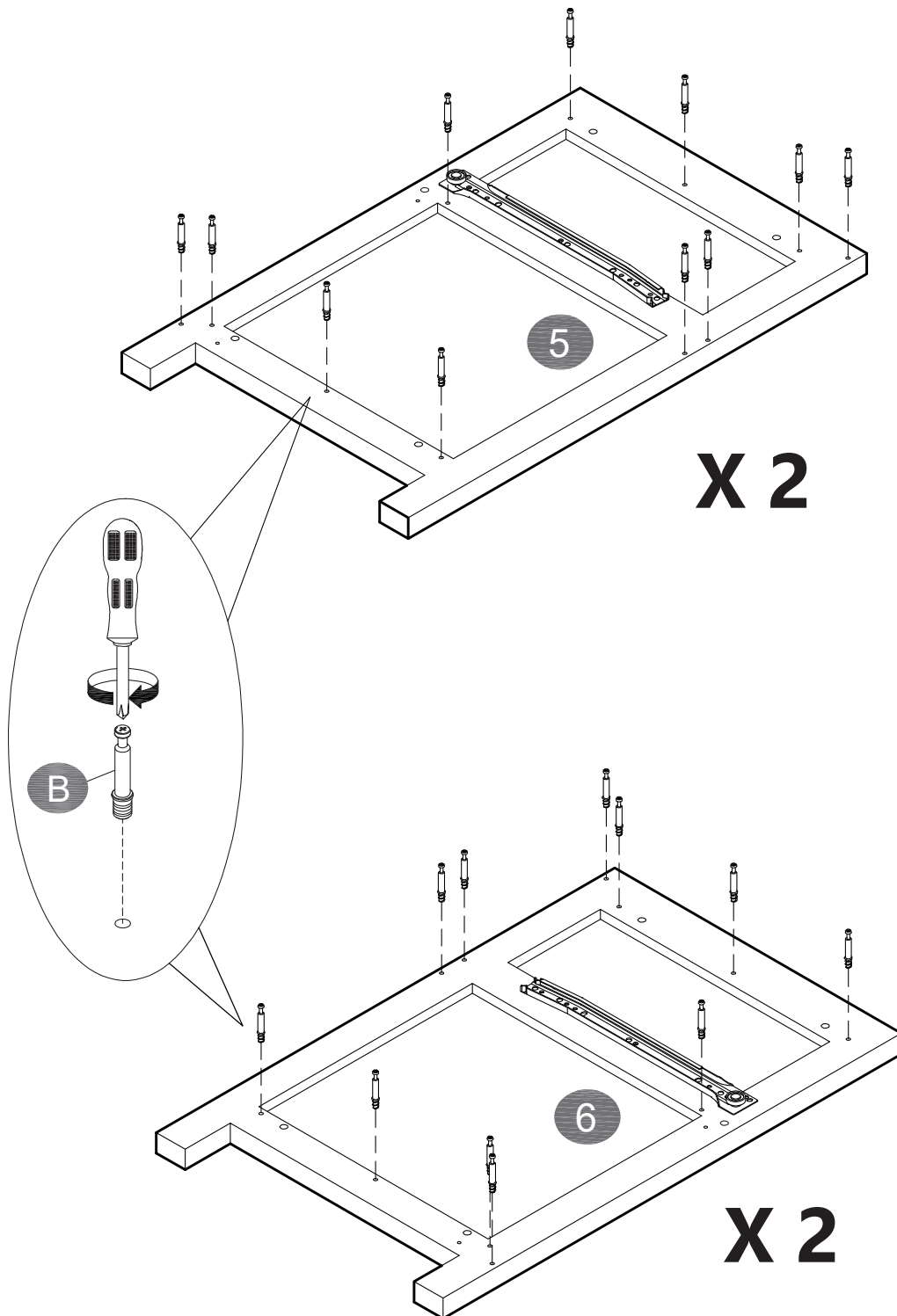
X 2



X 2

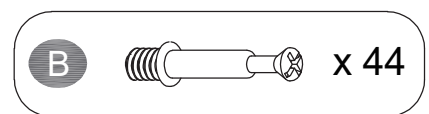
Step 3

Securing Cam Bolt (B) into Board (5&6)



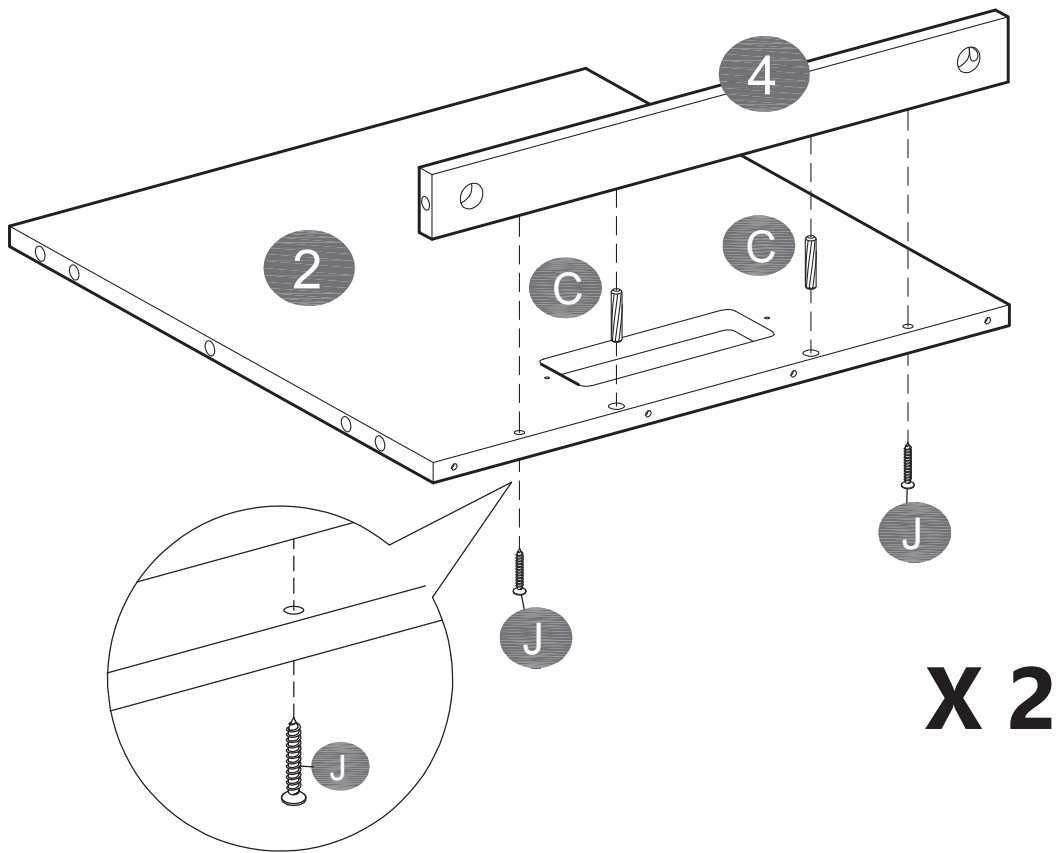
X 2



X 2



Step 4

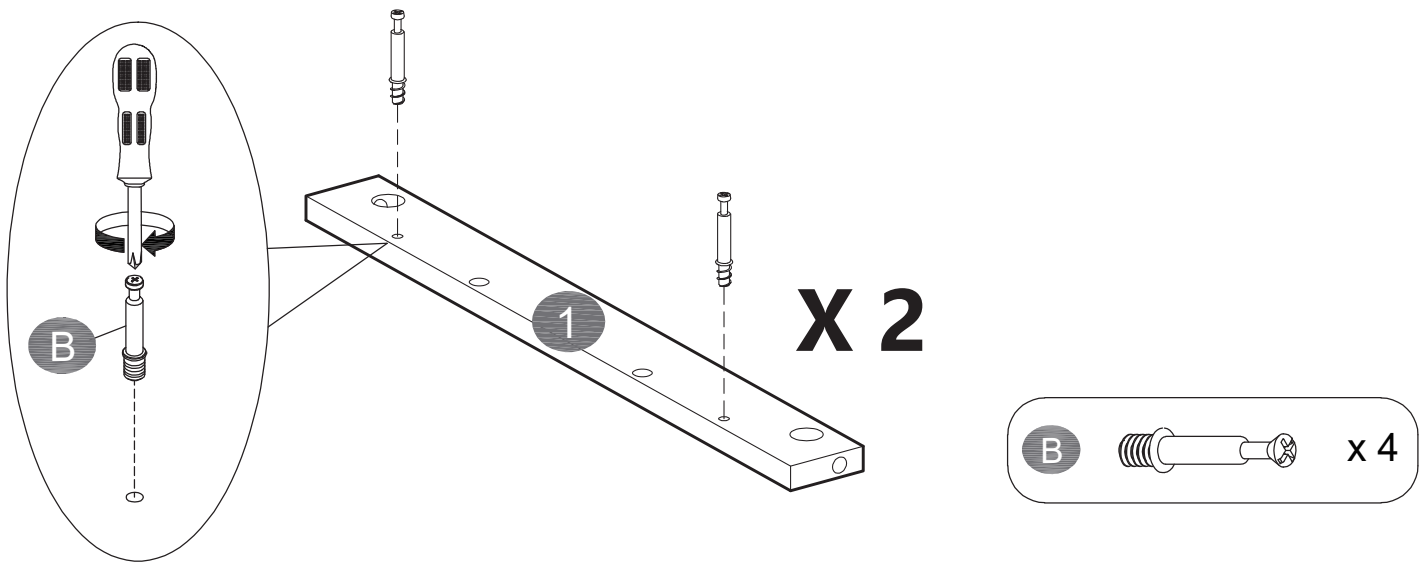
Inserting Wooden Dowel (C) into Board (2), then attach Board (4) to Board (2). Using Screws (J) secure Board (4) to Board (2).



C		x 4
J	ST4x35mm 	x 4

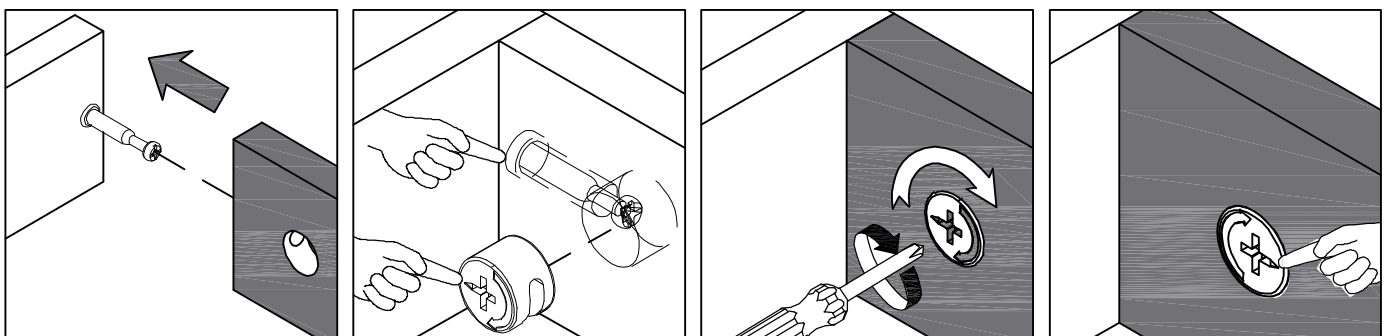
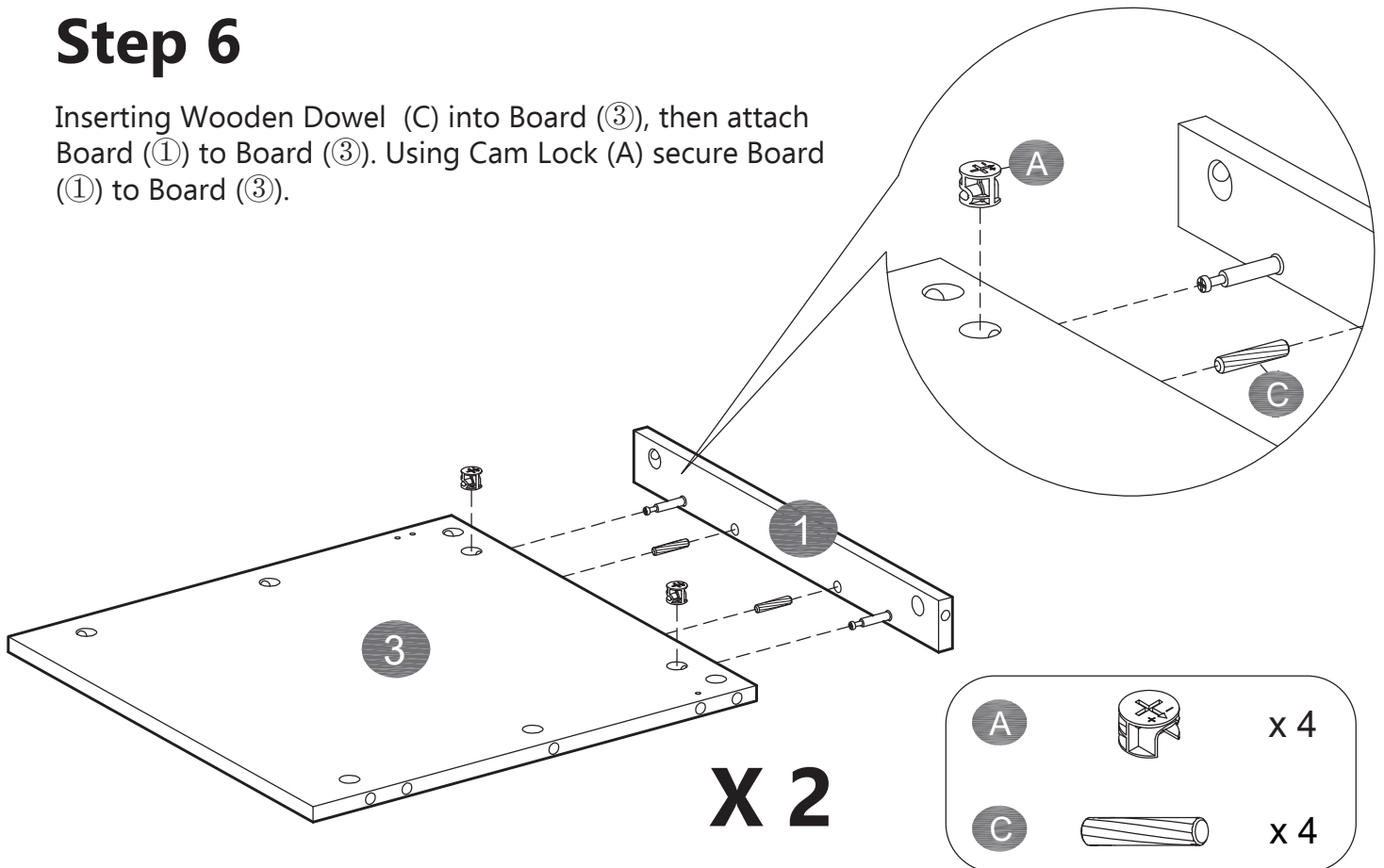
Step 5

Securing Cam Bolt (B) into Board (①).



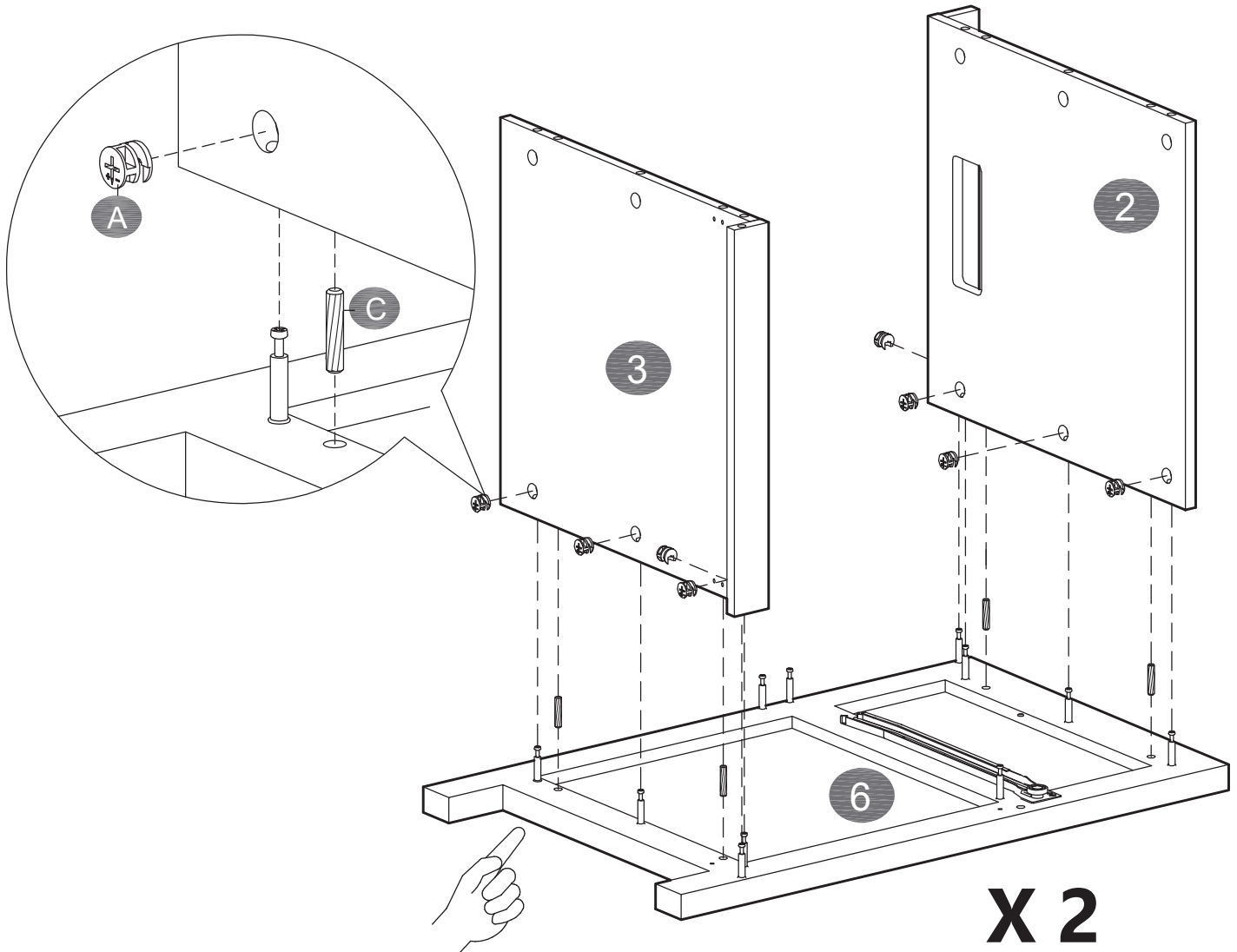
Step 6


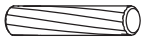
Inserting Wooden Dowel (C) into Board (③), then attach Board (①) to Board (③). Using Cam Lock (A) secure Board (①) to Board (③).

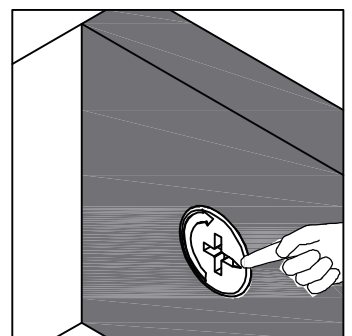
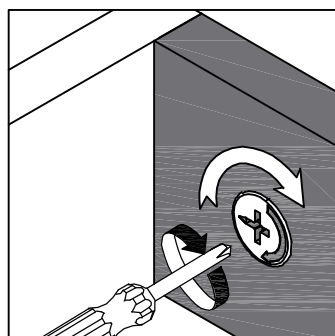
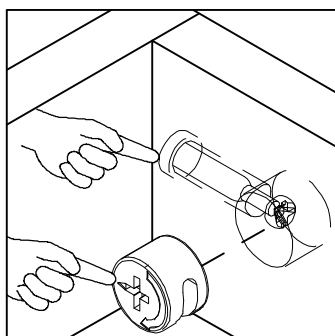
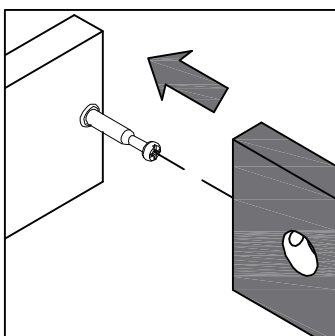


Step 7

Inserting Wooden Dowel (C) into Board (2&3), then attach Board (2&3) to Board (6). Using Cam Lock (A) secure Board (2&3) to Board (6).

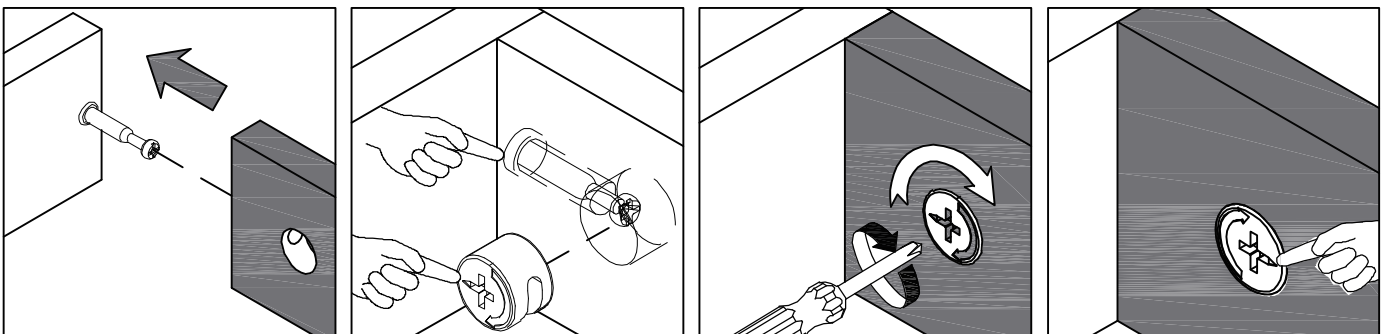
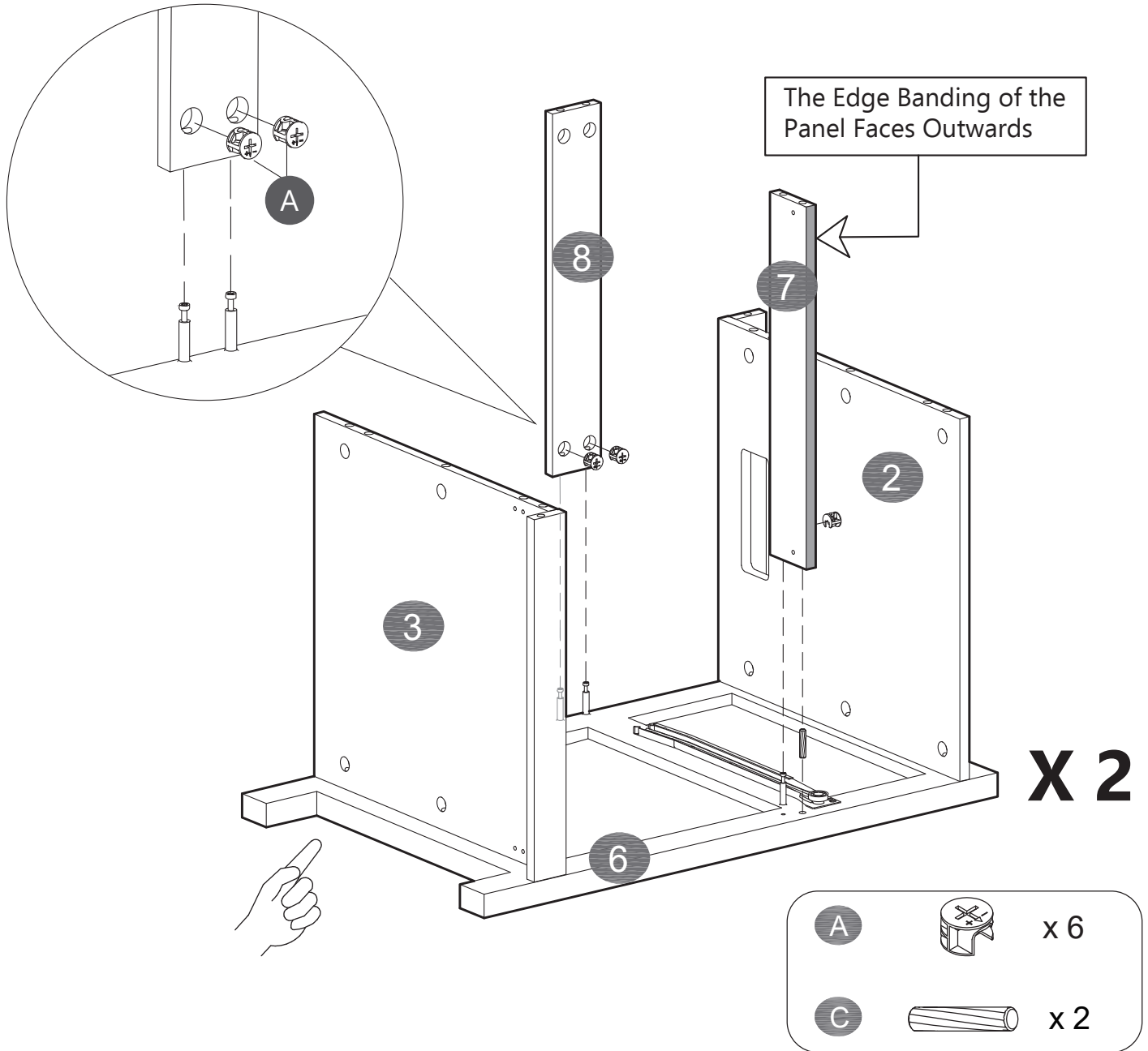


A		x 16
C		x 8



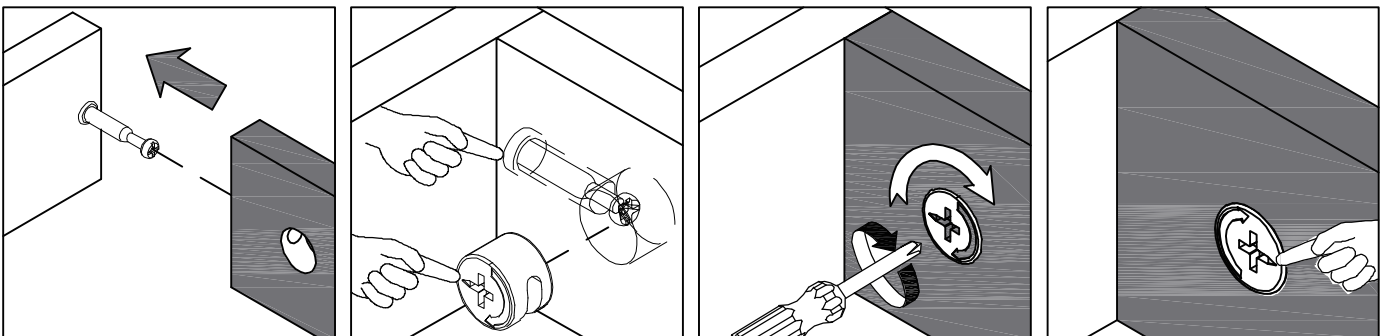
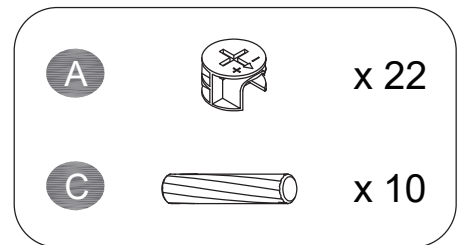
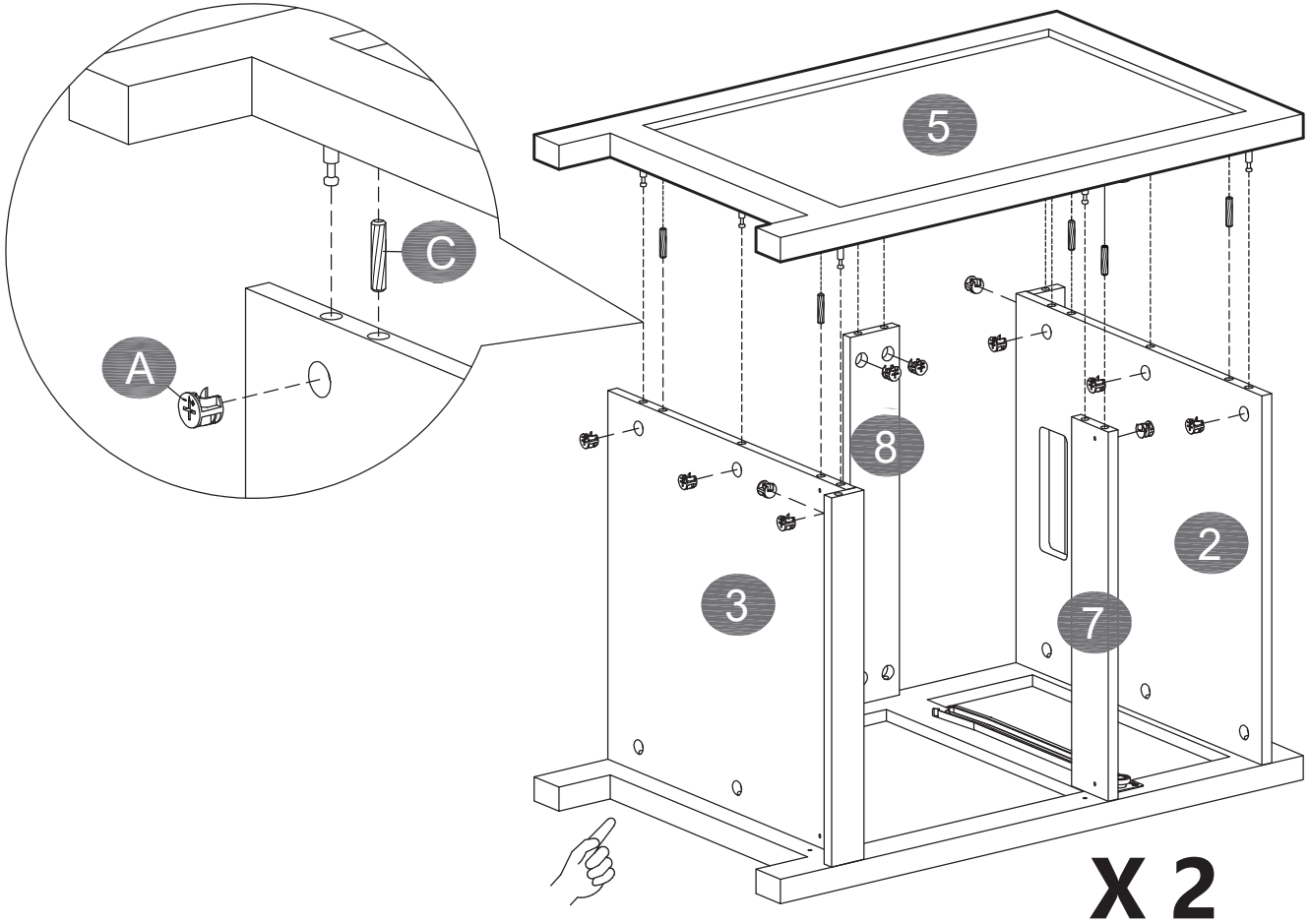
Step 8

Inserting Wooden Dowel (C) into Board (7), Attach Board (7&8) to Board (6).
Using Cam Lock (A) secure Board (7&8) to Board (6).



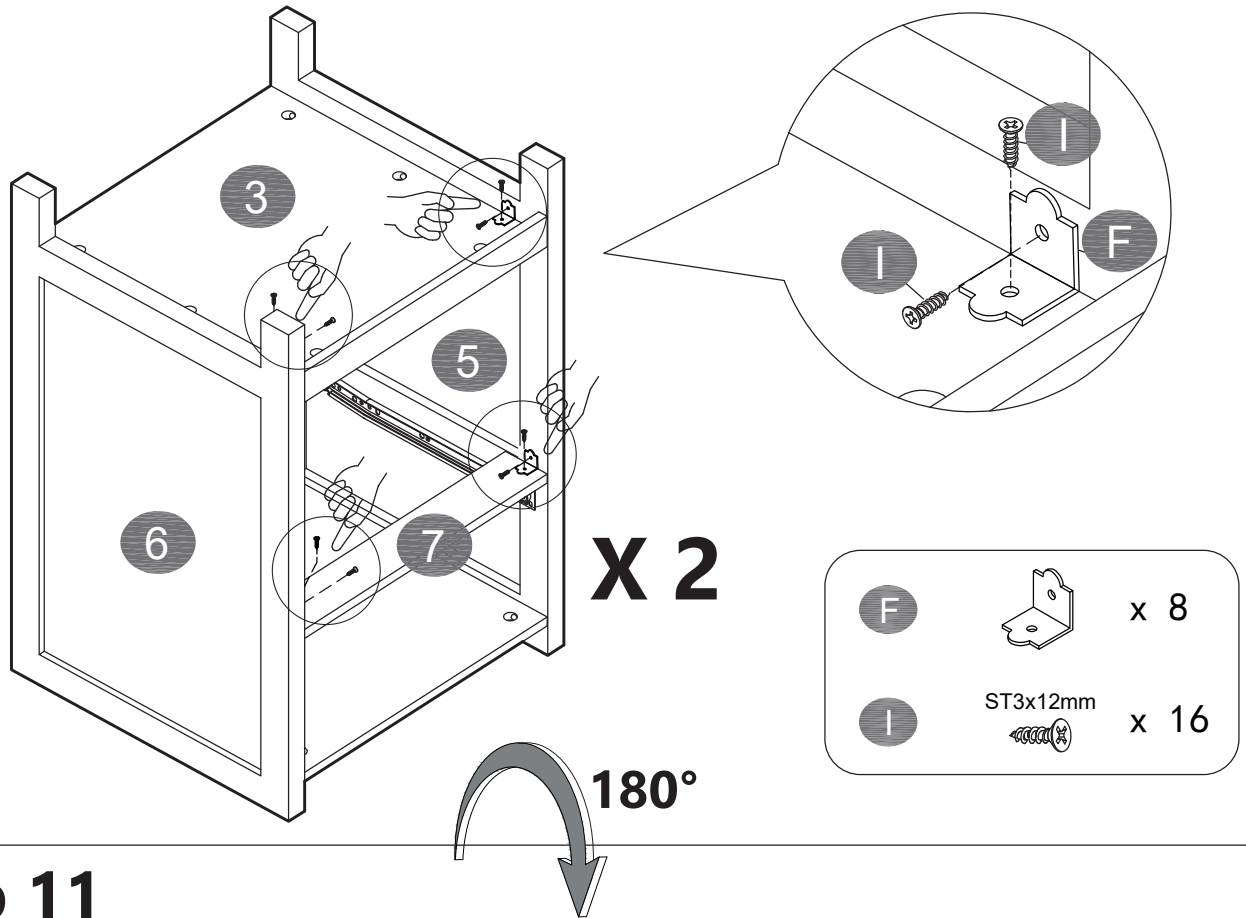
Step 9

Inserting Wooden Dowel (C) into Board (②&③&⑦), then attach Board (⑤) to Board (②&③&⑦&⑧). Using Cam Lock (A) secure Board (⑤) to Board (②&③&⑦&⑧).



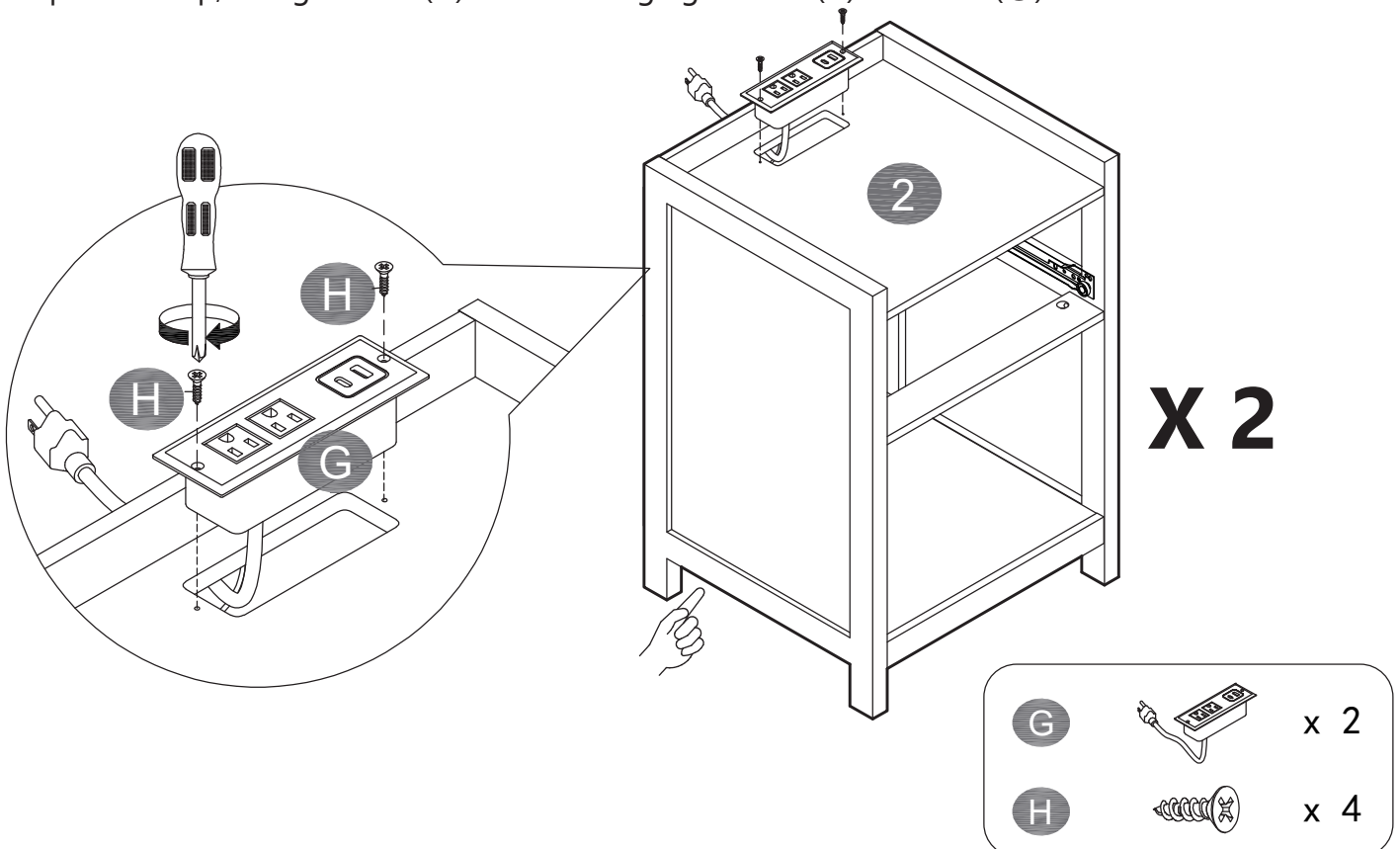
Step 10

Flip to the bottom, Using Screws (I) secure Support Lock (F) to the corners between (3&5, 3&6, 5&7, 6&7).



Step 11

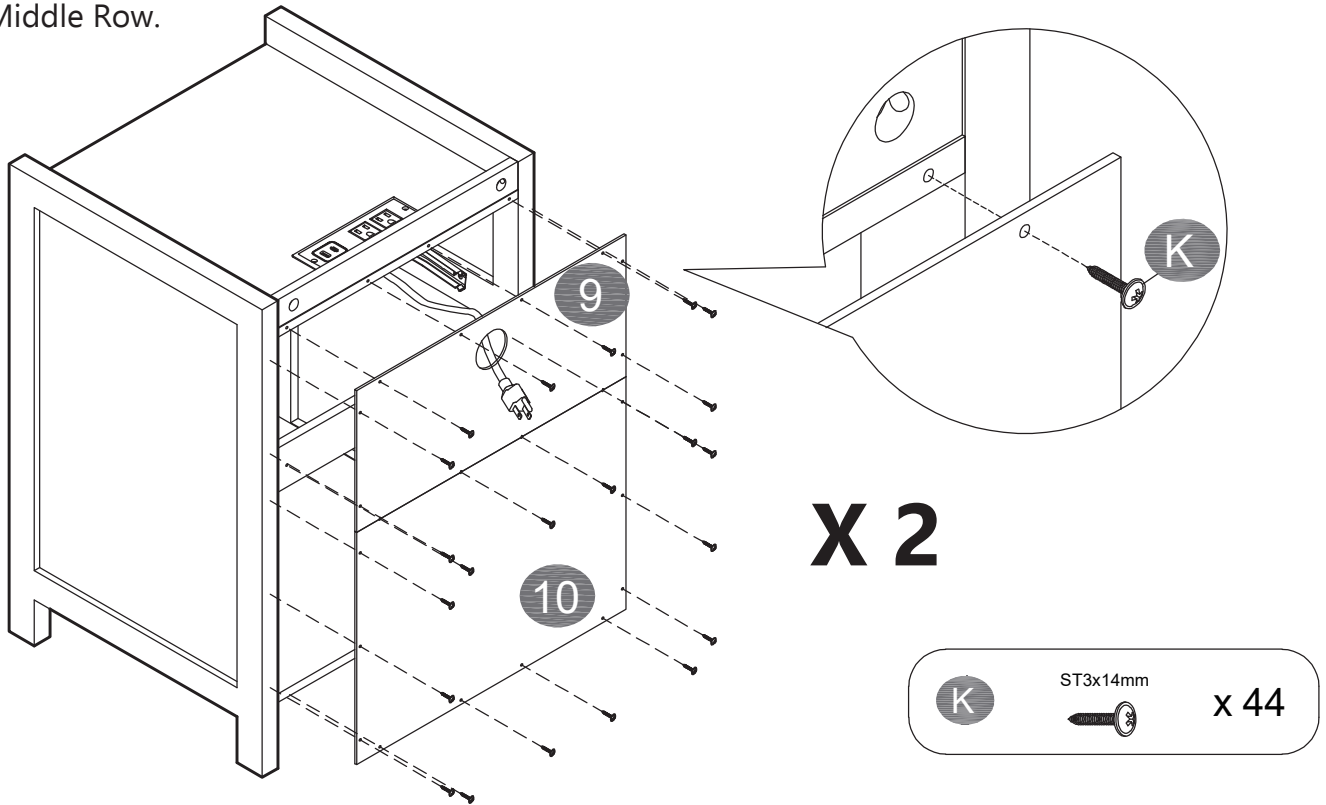
Flip to the top, Using Screws (H) secure Charging Station (G) to Board (2).



Step 12

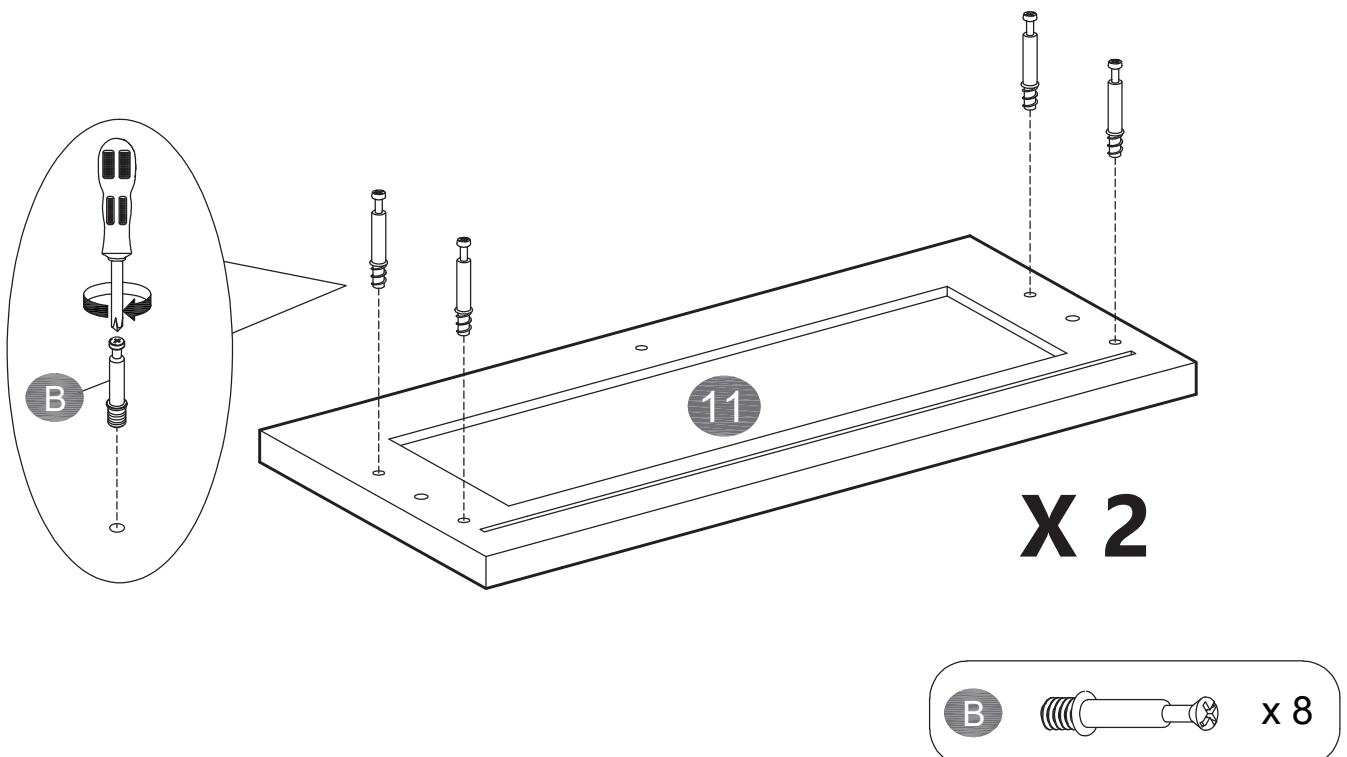
Using Screws (K) to assemble Back Panels (9&10) to the main body. Push the plug through the hole in the back panel.

Tips: Install the Screws Around the (9&10) Boards First, then Install the Screws in the Middle Row.



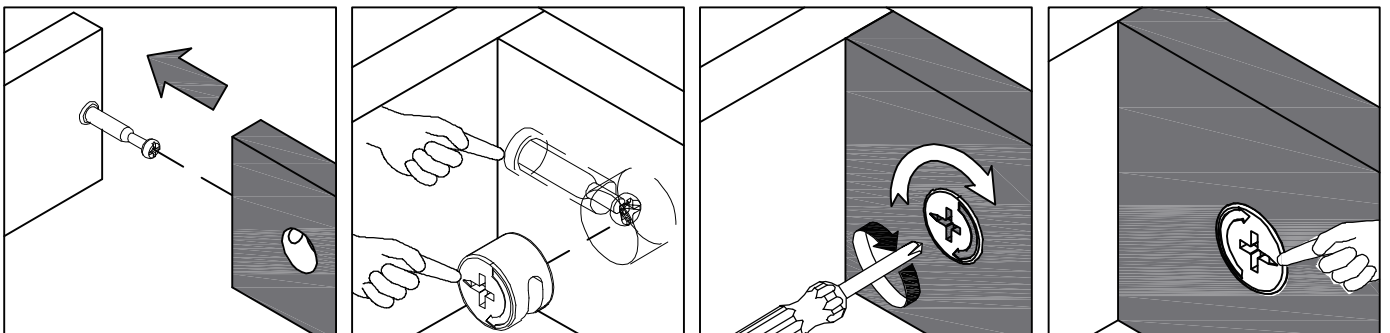
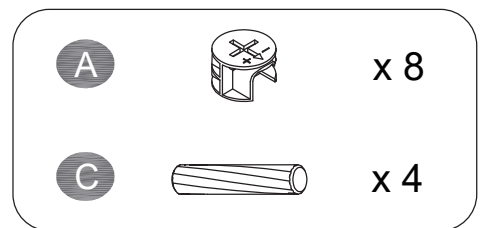
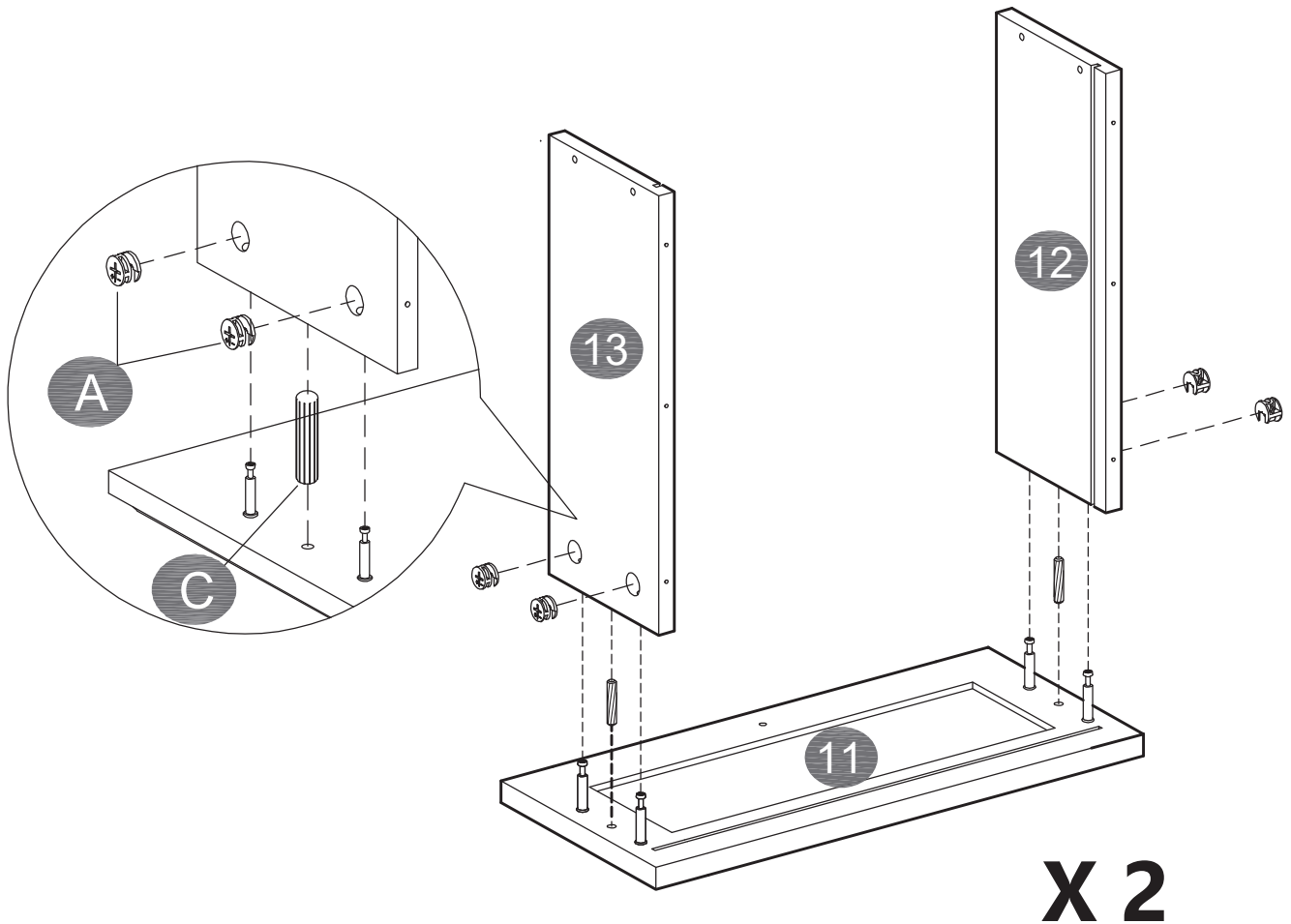
Step 13

Securing Cam Bolt (B) into Board (11).



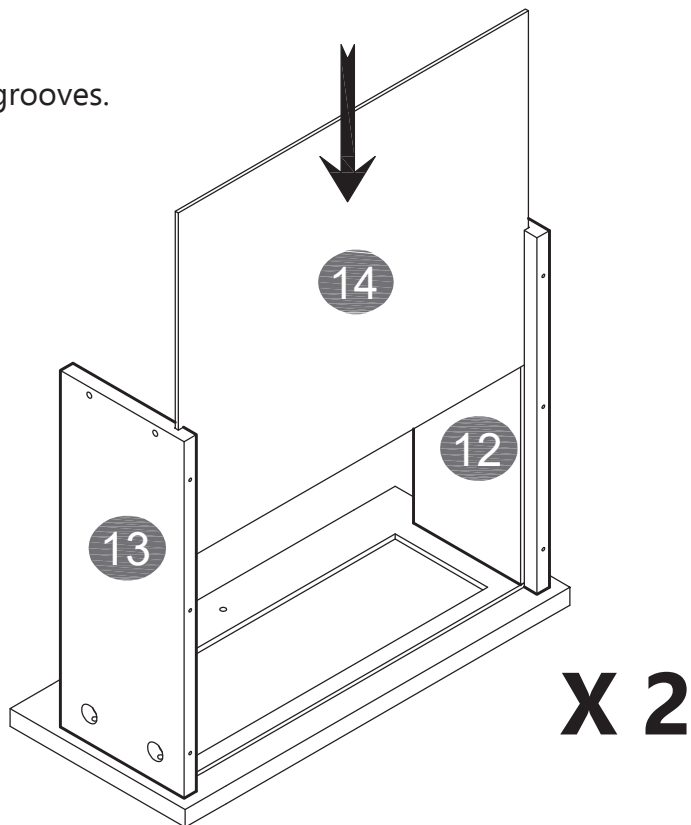
Step 14

Inserting Wooden Dowel (C) into Board (11), Attach Board (12 & 13) to Board (11), Using Cam Lock (A) secure Board (12 & 13) to Board (11).



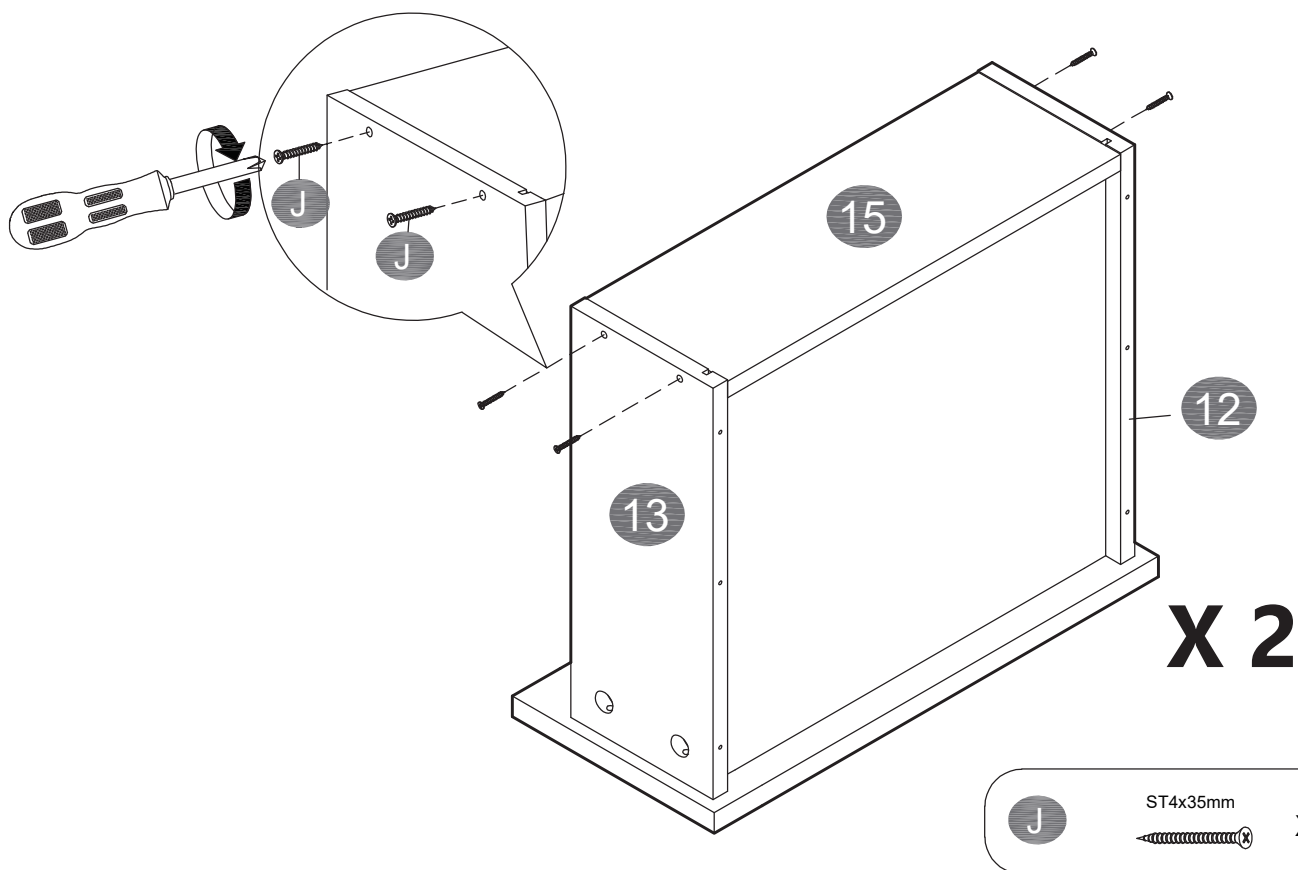
Step 15

Sliding drawer bottom panels (14) into grooves.



Step 16

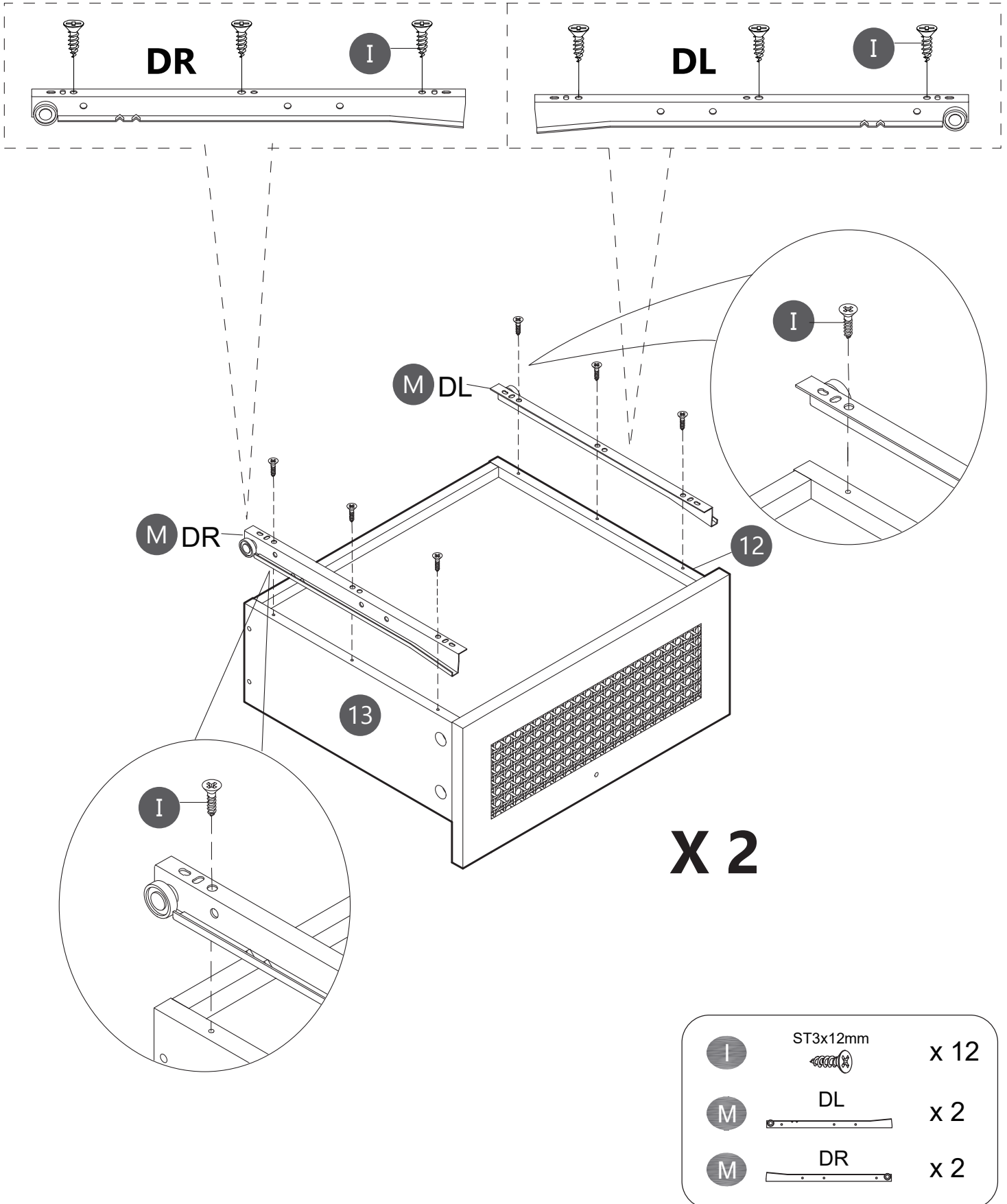
Using Screws (J) to assemble Board (15) to the Board (12 & 13).



Step 17

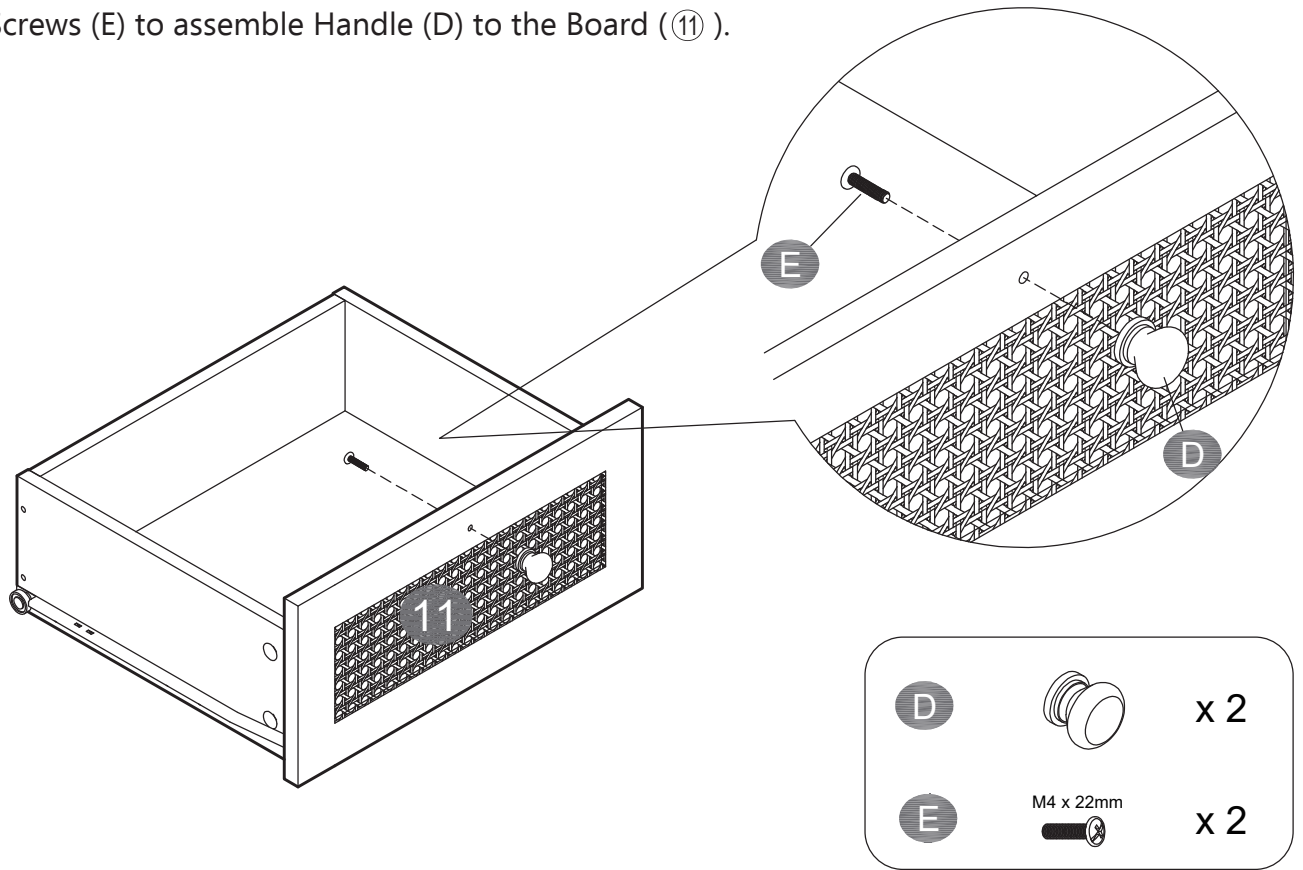
Using Screws (I) to assemble Slide (DL) to Board (12).

Using Screws (I) to assemble Slide (DR) to Board (13).



Step 18

Using Screws (E) to assemble Handle (D) to the Board (11).



Step 19

When you put the drawer, please note that the drawer wheels on top of the wheels of the slide, then check whether the drawer is smooth when pulled out. Otherwise, the drawer will not be aligned with other drawers.

