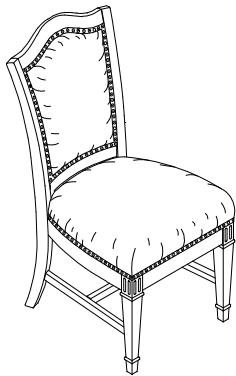


ASSEMBLY INSTRUCTION

DESCRIPTION: UPH SIDE CHAIR (RTA)

Thank you for purchasing this quality product. Be sure to check all packing material carefully for small parts which may have come loose inside the carton during shipment. Identify and count all parts and compare with the parts List Below

PART LIST:



①	②	③	④	⑤	⑥	⑦
BACK FRAME: 1PC	CUSHION SEAT : 1PC	FRONT LEFT LEG: 1PC	FRONT RIGHT LEG: 1PC	CENTER STRETCHER : 1PC	LEFT SIDE STRETCHER :1PC	RIGHT SIDE STRETCHER :1PC

NOTE:

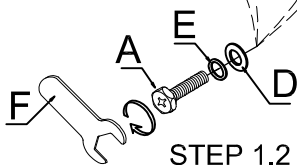
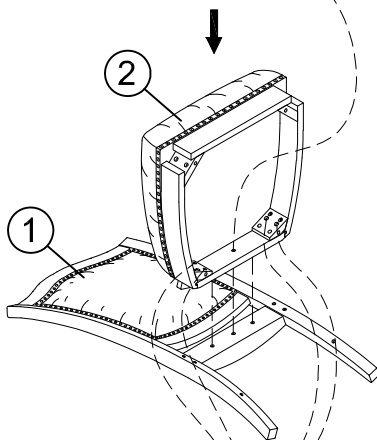
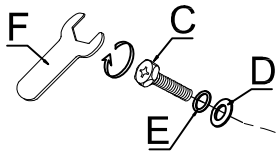
1. DO NOT FULLY TIGHTEN SCREW, BOLTS UNTIL ALL PARTS COMPLETE ASSEMBLY.

HARDWARE LIST

NO.	Drawing	Description	Q'ty
A		Bolt (Φ5/16"×3-1/4")	4pcs
B		Bolt (Φ5/16"×2-1/2")	4pcs
C		Bolt (Φ5/16"×1-3/4")	1pc
D		Flat washer (Ø5/16"×19mm)	9pcs
E		Spring washer (Ø5/16")	9pcs
F		Ø5/16" Wrench(12mm)	1pc
G		Wood screw (Φ8x1-1/2")	6pcs

STEP 1

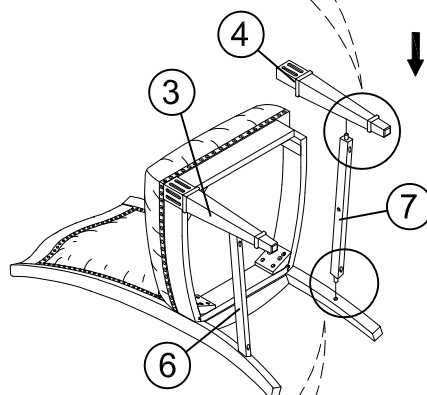
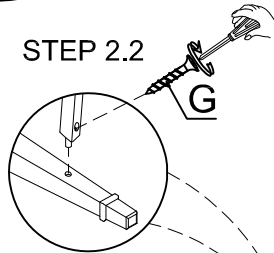
STEP 1.1



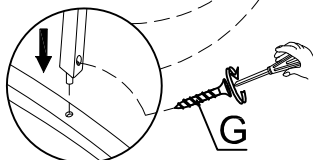
STEP 1.2

STEP 2

STEP 2.2

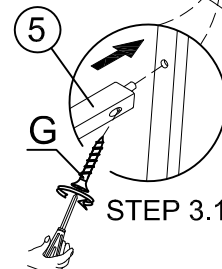
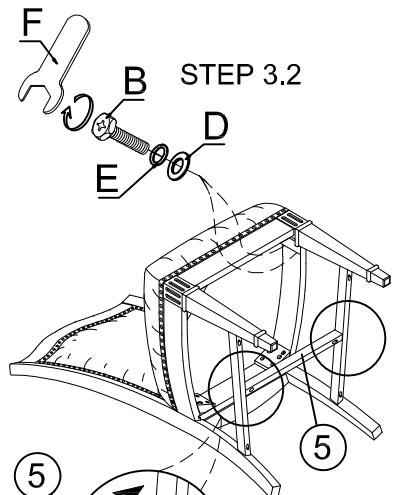


STEP 2.1



STEP 3

STEP 3.2



STEP 3.1

CLEANING INSTRUCTION

Clean the Uph Side Chair surface with a furniture polish and a soft cloth.