

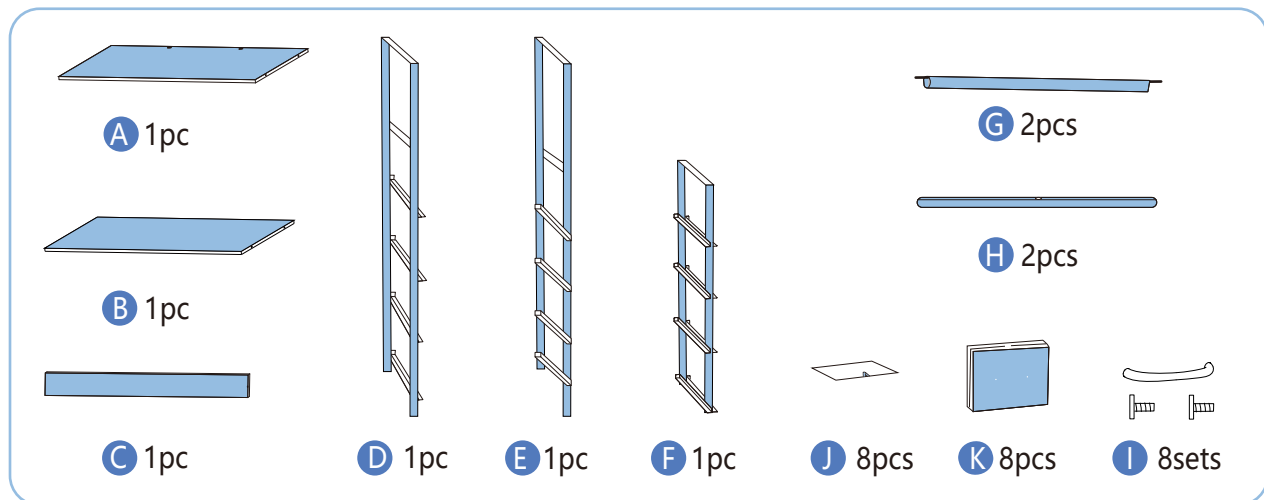
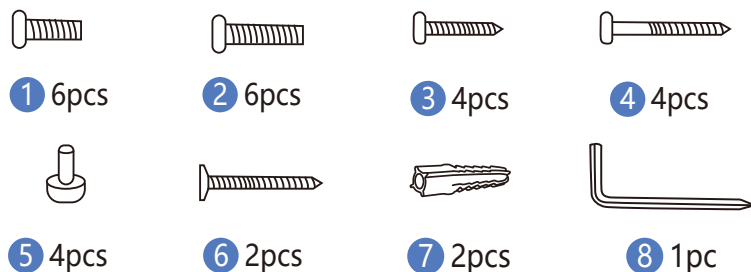
Assemble Instruction

ATTENTION: Do not tighten the screws until you have complete setup assembly.

If you have any question about the instructions, please kindly check out the installation video on our link page.

Product Assembly Accessories:

We prepare a spare one for part of the screws in case of damage or loss.



Product Assembly Steps:

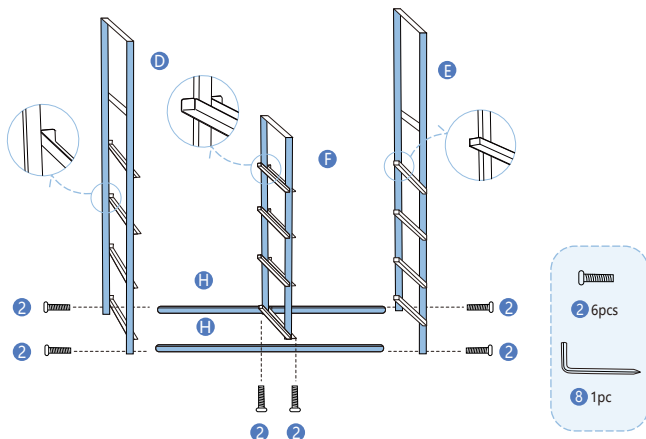
Do not tighten the screws until you have complete setup assembly.

step1:

1. Secure the frame **H** between the frame **D** and **E** with **2** screws.

2. Fix the frame **F** to the frame **H** with **2** screws.

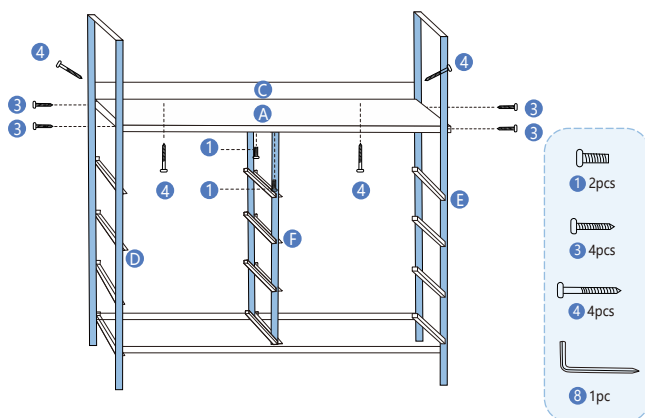
Note: The directions of the baffles at the end of the slots of the three frame drawers are the same.



step2:

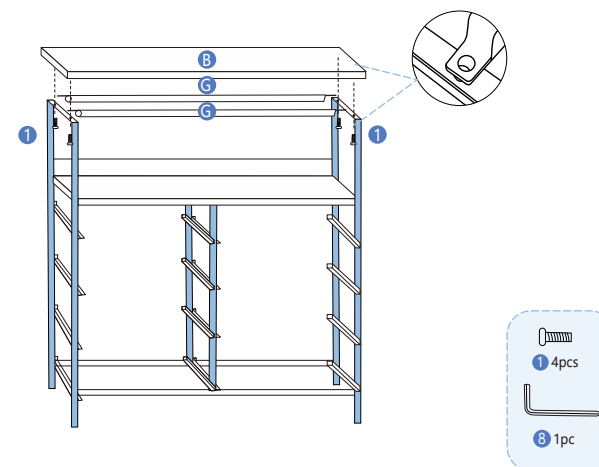
1. Secure the wood board **A** to the frame **D** and **E** with **3** screws, and connect the board to frame **F** with **1** screws. Note: Screw **1** is the shortest and should not be overtightened.

2. Secure the backboard **C** with **4** screws.



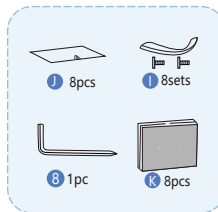
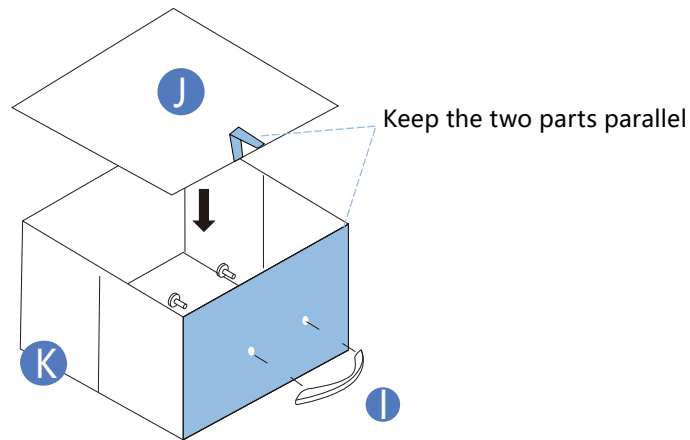
step3:

Secure the top board **B** and fix **G** frame with **1** screws.



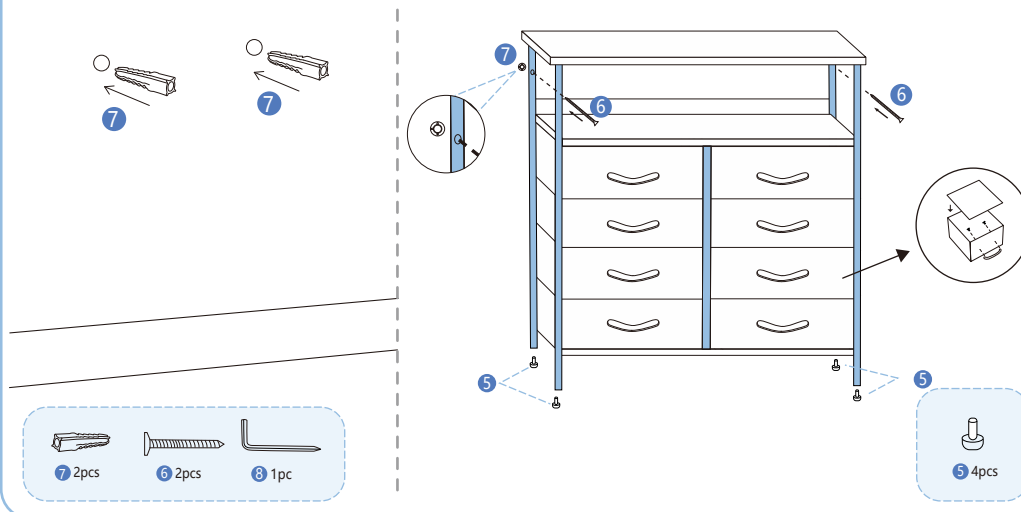
step4 :

Install the handle **I** on the drawer **K** with screws, insert the inner board **J**.



step5 :

Use a power drill to make holes in the wall, insert **7** expansion screws, and fix the dresser with **6** screw.



Assembly Notes:

- ◆ It is recommended that you categorize the accessories before installation to quickly find the required accessories during installation.
- ◆ When assembling the drawer, make drawer bottom handle and the drawer wooden handle remain parallel.
- ◆ When install the frame, please make sure that the metal drawer support at the same direction.

Matters Needing Attention:

- ◆ Please make sure the weight of the objects you put in the drawers follows the allowed weight standards.
Max static load capacity of the tabletop: 40lb
Max static load capacity of each drawer: 7lb
- ◆ Washing the entire dresser can be detrimental to its construction. Please clean it gently with a wet cloth instead.
- ◆ A smell of wood is present on all new products. Please keep the dresser in a well-ventilated room soon after construction so that the odor can leave.
- ◆ Secure the dresser to the wall with our provided anti-tip kit to enable stability and protection for your loved ones.