

# 60" x 30" Table Top

SKU: DESK-TOP60-30B/C/D/G/N/W

Instruction Manual

---

Assembly Video & Product Info  
<https://vivo-us.com/products/desk-top60-30b>



# ! CAUTION! !

If you do not understand these directions, or if you have any doubts about the safety of the installation, please contact our product support team at 309-278-5303 or help@vivo-us.com for further assistance. Check carefully to make sure there are no missing or defective parts. Improper installation may cause damage or serious injury. Do not use this product for any purpose that is not explicitly specified in this manual. Do not exceed weight capacity. We cannot be liable for damage or injury caused by improper mounting, incorrect assembly or inappropriate use.



## WARNING: CHOKING HAZARD

SMALL PARTS - NOT FOR CHILDREN UNDER 3 YEARS. ADULT SUPERVISION IS REQUIRED.

---

## We're Here for You

Open **Monday - Friday 7:00am - 7:00pm CST**, our dedicated support team can offer immediate assistance with rapid response times. If any parts are received damaged or defective, please contact us. We are happy to replace parts to ensure you have a fully functioning product.



Give us a Call:  
**309-278-5303**

AVG. RESOLUTION TIME (*within office hrs*): **5M 4S**



Chat Us:  
**www.vivo-us.com**

AVG. RESOLUTION TIME (*within office hrs*): **< 15 M**

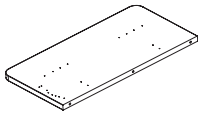


Email Us:  
**help@vivo-us.com**

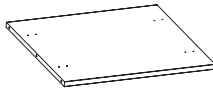
AVG. RESPONSE TIME (*within office hrs*): **1HR 8M**

- 23% within < 15m
- 38% within < 30m
- 61% within < 1hr
- 83% within < 2hr
- 92% within < 3hr

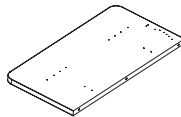
## Package Contents



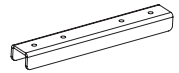
**A (x1)**  
Right Panel



**B (x1)**  
Middle Panel



**C (x1)**  
Left Panel



**D (x4)**  
Support Bar

---

## Included Hardware & Tools



**S-A (x6)**  
Wooden  
Dowel Pin



**S-B (x16)**  
ST4.2x16mm  
Screw

---

## Tools Needed:

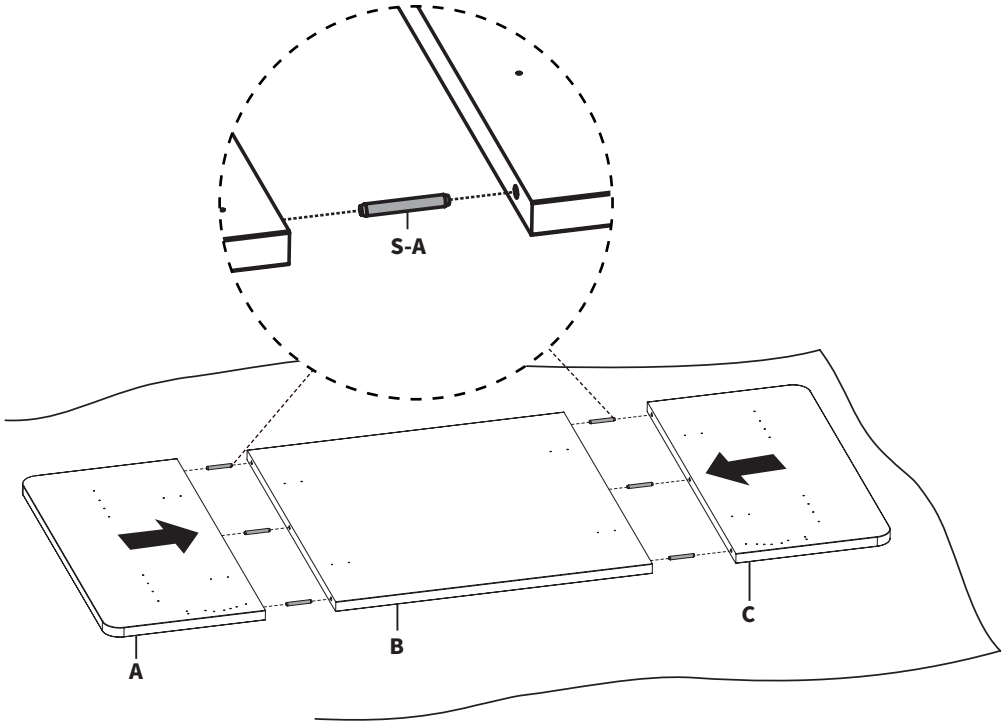


**Phillips  
Screwdriver**

# ASSEMBLY STEPS

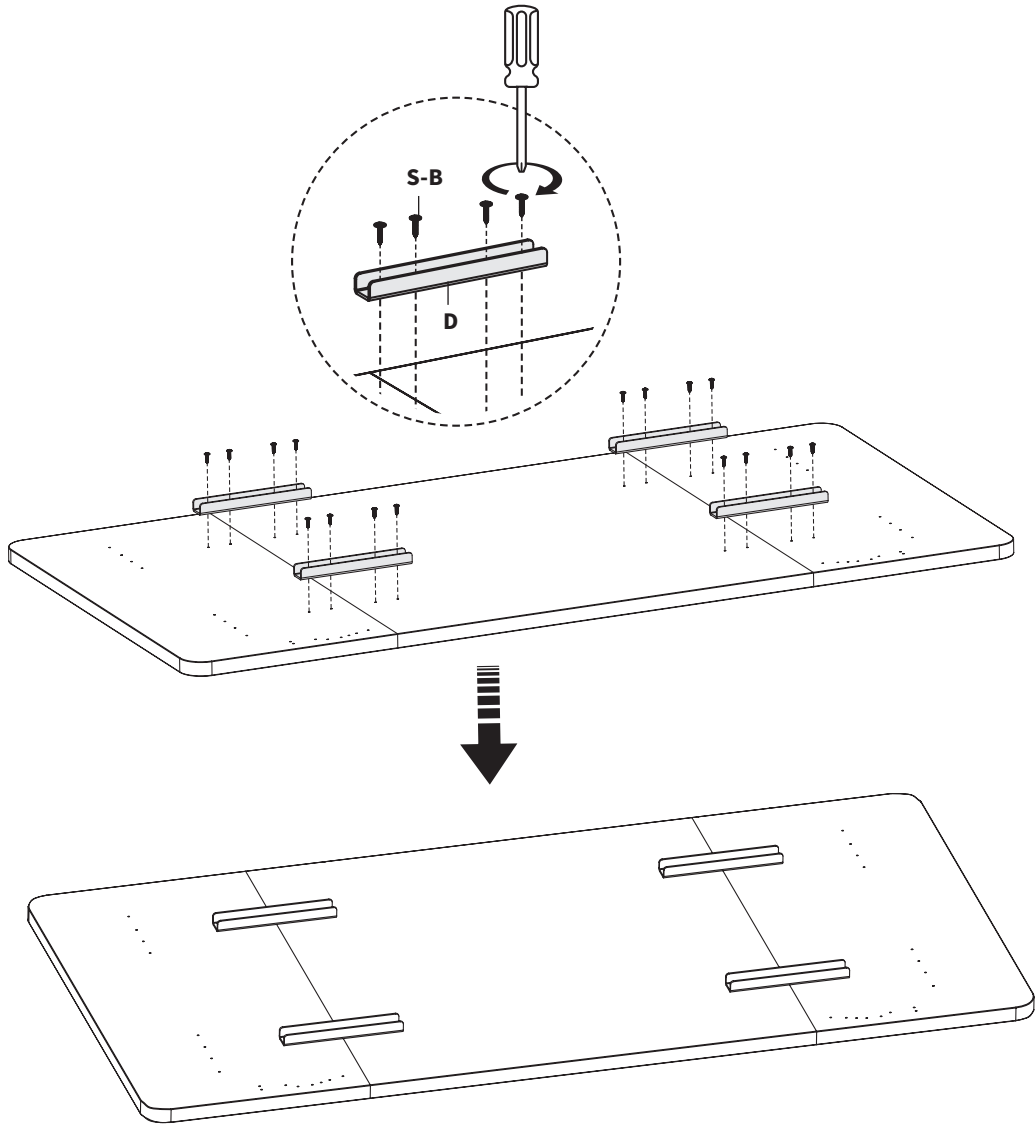
## STEP 1

Place Desktop Panels **(A, B, C)** upside down on a protective surface and insert Wooden Dowel Pins **(S-A)** into Middle Panel **(B)**. Connect Right Panel **(A)** and Left Panel **(C)** to Middle Panel **(B)** using Wooden Dowel Pins **(S-A)**.



## STEP 2

Attach Support Bars (**D**) to predrilled holes in desktop assembly using ST4.2x16mm Screws (**S-B**) and a Phillips screwdriver.

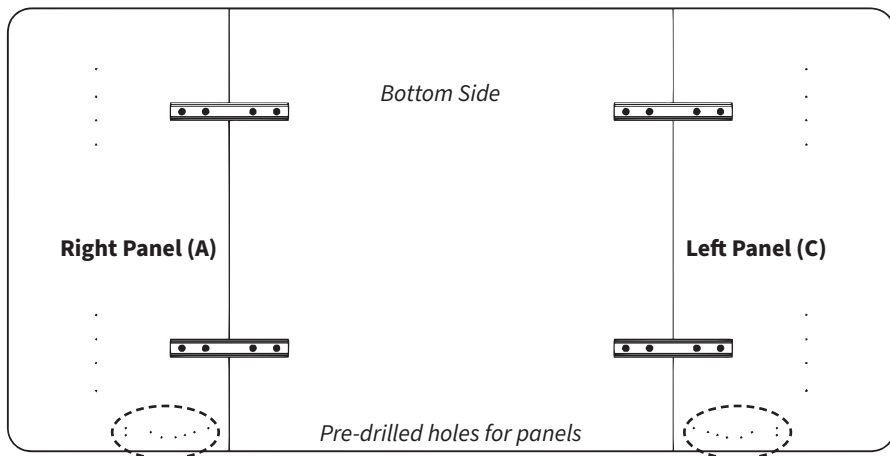


## Securing to Desk Frame

Place desk frame upside down on the desktop assembly. Adjust the frame width to match desktop mounting holes, and secure frame to desktop assembly using hardware provided in your desk frame kit.

For VIVO frames, pre-drilled holes have been included for most control panels.

### Pre-Drilled Hole Diagram for VIVO Desk Frames



**NOTE:** Holes for some control panels are not pre-drilled. In this case, you must drill your own.

[THIS PAGE INTENTIONALLY LEFT BLANK]



## Need Help? Get In Touch

Monday-Friday from 7:00am-7:00pm CST



[help@vivo-us.com](mailto:help@vivo-us.com)



[www.vivo-us.com](http://www.vivo-us.com)

*Chat live with an agent!*



309-278-5303



VIVO-us @vivo\_us