
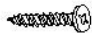
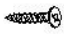


TEMPLATE TO HANG MIRROR

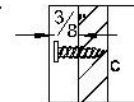
SCREW LOCATION

NO.	DRAWING	DESCRIPTION	Q'TY
A		MIRROR FRAME	1
B		DRYWALL EZ ANCHOR	2
C		WOOD SCREW	2

STEP 1: CENTER TEMPLATE AT DESIRED HEIGHT ABOVE 25" VANITY. TAPE TEMPLATE TO THE WALL.

STEP 2: DRILL $\frac{1}{16}$ " PILOT HOLE $\frac{1}{2}$ " DEEP. THIS MARKS LOCATION FOR SCREWS TO HANG MIRROR.

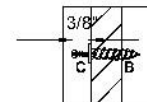
STEP 3: IF HOLE LOCATION IS ALEIGNED WITH STUD IN WALL, SECURE THE SCREW(C) DIRECTLY INTO THE STUD. NOTE: DO NOT DRIVE SCREW ALL THE WAY IN, HAVE HEAD OF SCREW OUT ABOUT $\frac{3}{8}$ ".



STEP 4: IF HOLE LOCATIONS DO NOT ALEIGN WITH STUD, INSTALL THE DRYWALL EZ ANCHOR(B). TAP THE EZ ANCHOR INTO THE DRYWALL UP TO THE THEADS, USING A PHILLIPS HEAD SCREW DRIVER, SECURE THE EZ ANCHOR INTO THE DRYWALL.



STEP 5: SECURE SCREWS(C) INTO EZ ANCHOR. NOTE: DO NOT DRIVE SCREW ALL THE WAY IN, HAVE HEAD OF SCREW OUT ABOUT $\frac{3}{8}$ ".



STEP 6: HANG MIRROR

