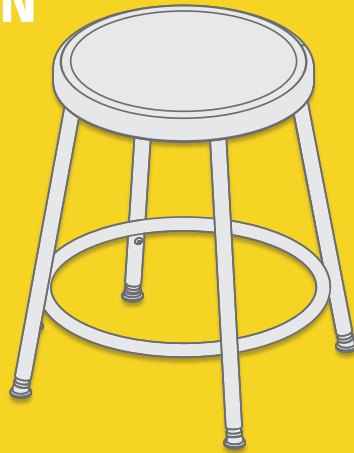


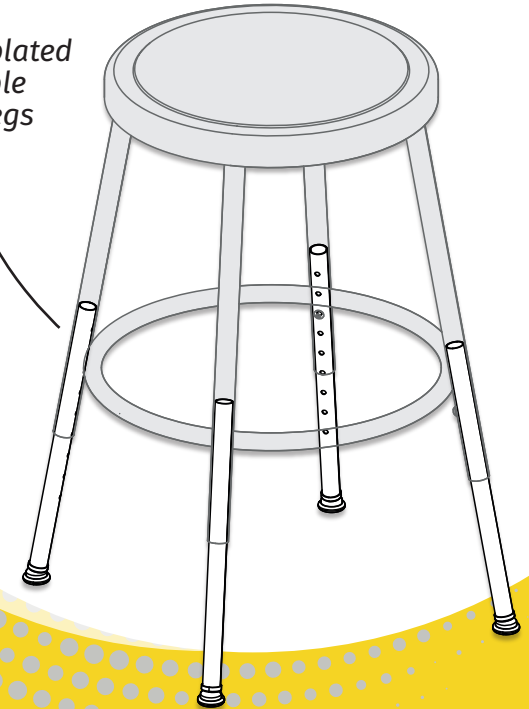
ASSEMBLY INSTRUCTIONS

STOOL

ADJUSTABLE HEIGHT
LEG INSTALLATION



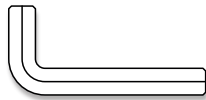
4x Chrome plated
adjustable
Height Legs



INCLUDED HARDWARE

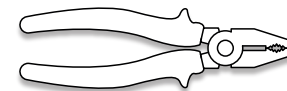


4x Screw



Allen Wrench

TOOLS NEEDED

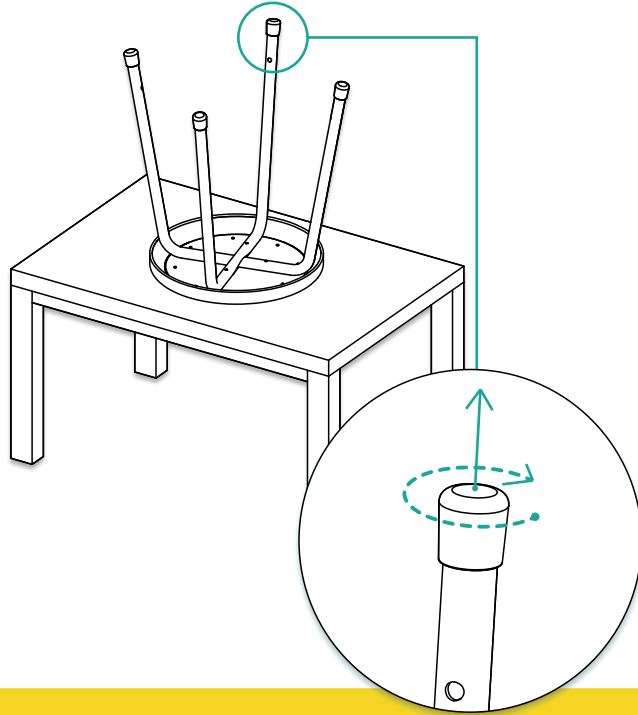


Pliers

Dear Customer, Thank you for your purchase! Although extreme care goes into manufacturing & packaging of this product, mistakes are possible. If you encounter any missing parts or difficulty in assembly, please contact our customer service Toll Free at 1-800-261-4112 or info@nationalpublicseating.com for courteous & immediate resolution to your problem.

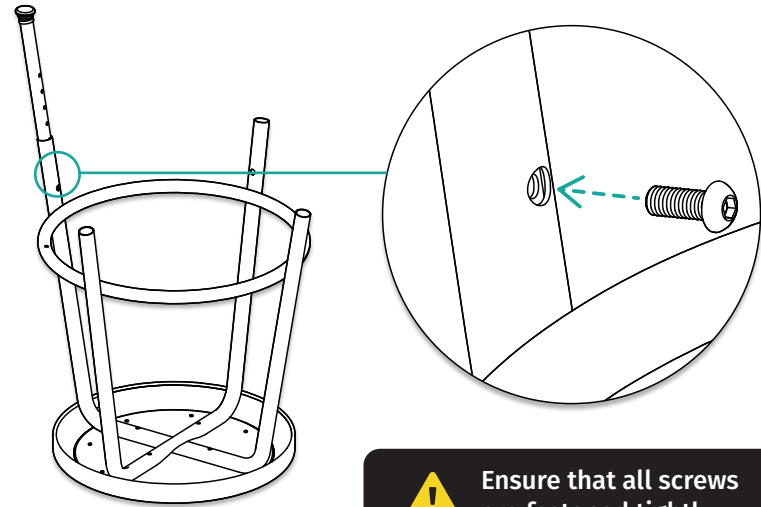
1

Turn stool upside down on a flat sturdy surface. Using pliers apply a firm grip to plastic glides and gently pull off the bottom of each leg by rotating glide upwards in a back and forth motion.



2

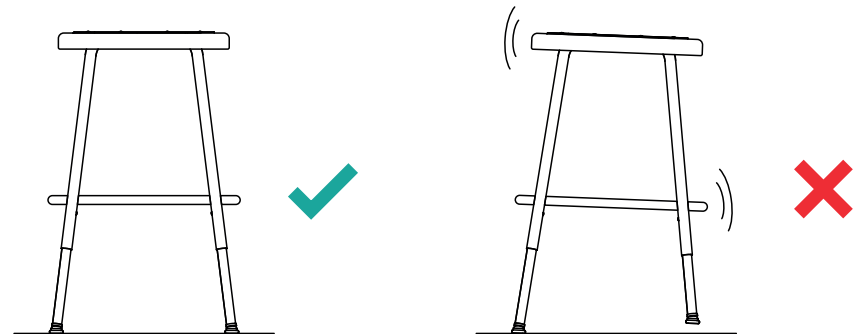
With the stool on a sturdy surface, insert each Adjustable Height Leg into a fixed leg. Line up a hole on the Adjustable Height Leg with the hole on the fixed leg at the desired height. Drive the supplied Screw through both holes and tighten securely.



Ensure that all screws are fastened tightly.

3

Be sure to align all legs at same height. Adjustments to the height can be done by turning the stool upside down, removing the screws and following the above instructions from point 2.



Double check all screws to be tightened securely before use. Check all screws periodically. Failure to completely tighten the screws may result in tipping and possible injury!

Congratulations, your stool with adjustable height leg is now assembled and ready to be used!