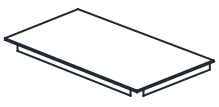
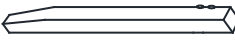






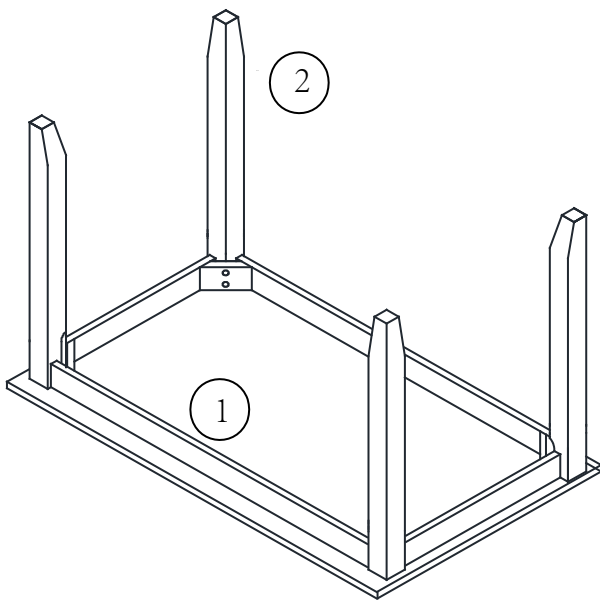
# ASSEMBLY INSTRUCTIONS

## TABLE

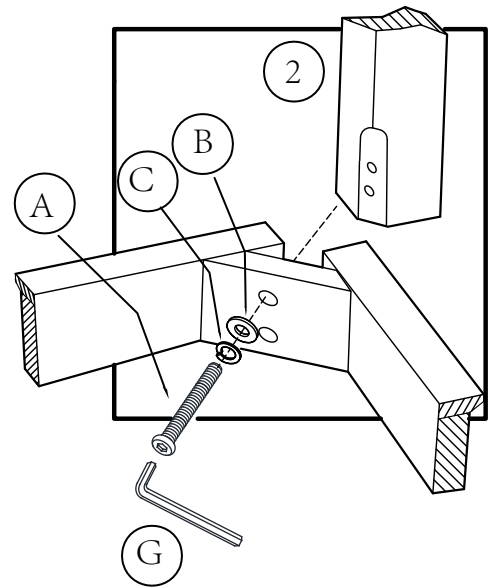
Thank you for purchasing this quality products. Be sure to check all packing material carefully for small parts that may have come loose inside the carton during shipment.

| PARTS IDENTIFICATION |   |           |          |
|----------------------|---|-----------|----------|
| No                   | Sketch  | Part      | Quantity |
| 1                    |  | Table top | 1 PC     |
| 2                    |  | Table leg | 4 PCS    |

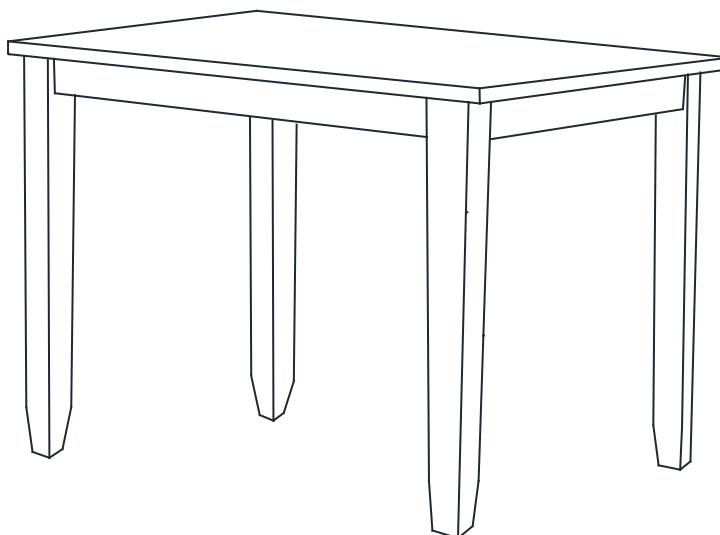
| HARDWARE LIST |   |                                 |          |
|---------------|---|---------------------------------|----------|
| No            | Shape   | Specification                   | Quantity |
| A             |  | Bolt $\Phi 5/16"$ x 60mm        | 8 PCS    |
| B             |  | Flat washer $\Phi 5/16"$ x 19mm | 8 PCS    |
| C             |  | Lock washer $\Phi 5/16"$        | 8 PCS    |
| G             |  | Allen wrench                    | 1 PC     |



STEP 1



DETAIL

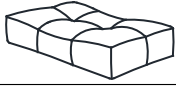









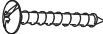

STEP 2

# ASSEMBLY INSTRUCTIONS

## STOOL

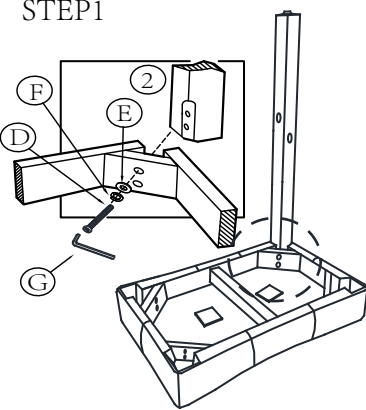
Thank you for purchasing this quality products. Be sure to check all packing material carefully for small parts that may have come loose inside the carton during shipment.

| PARTS IDENTIFICATION |   |                 |          |
|----------------------|---|-----------------|----------|
| No                   | Sketch  | Part            | Quantity |
| 1                    |  | Cushion Seat    | 1 PC     |
| 2                    |  | Left Leg        | 2 PCS    |
| 3                    |  | Right Leg       | 2 PCS    |
| 4                    |  | Long Stretcher  | 2 PCS    |
| 5                    |  | Short Stretcher | 2 PCS    |

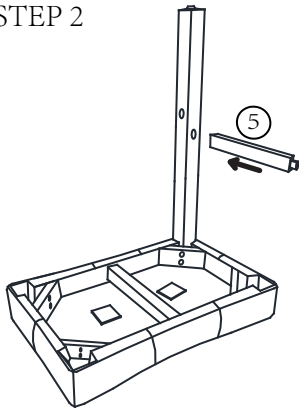
| HARDWARE LIST |   |  |          |
|---------------|---|--|----------|
| No            | Shape   | Specification                              | Quantity |
| D             |  | Bolt $\Phi 1/4" \times 60\text{mm}$        | 8 PCS    |
| E             |  | Flat washer $\Phi 1/4" \times 19\text{mm}$ | 8 PCS    |
| F             |  | Lock washer $\Phi 1/4"$                    | 8 PCS    |
| H             |  | Wood Screw $8 \times 35\text{mm}$          | 8 PCS    |
| G             |  | Allen wrench                               | 1 PC     |

Note: Do not tighten the bolts before finishing all steps.

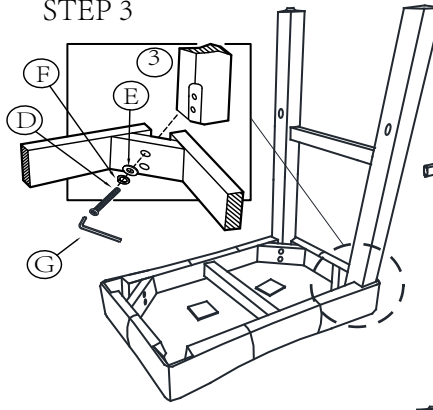
STEP 1



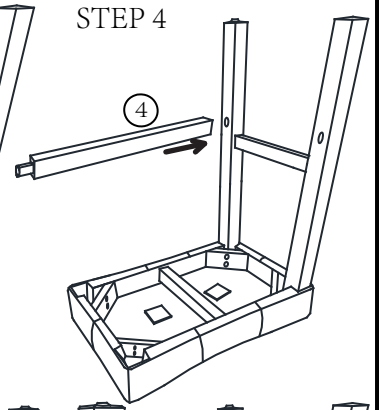
STEP 2



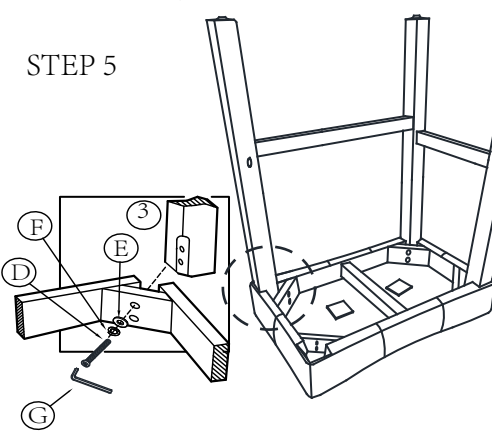
STEP 3



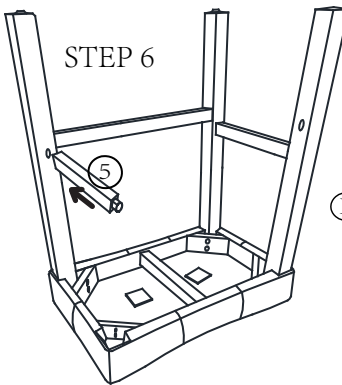
STEP 4



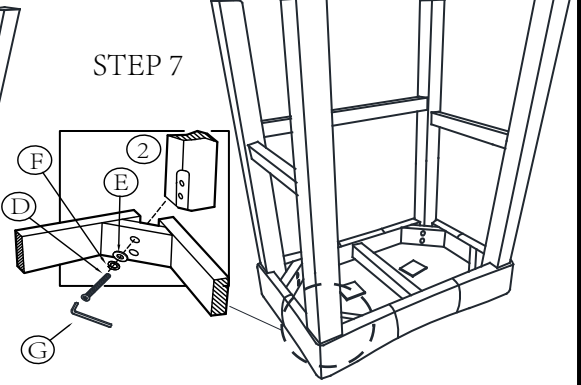
STEP 5



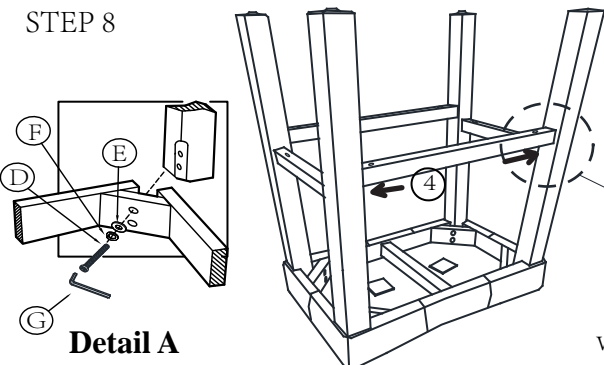
STEP 6



STEP 7

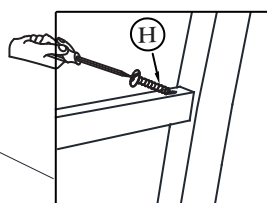


STEP 8



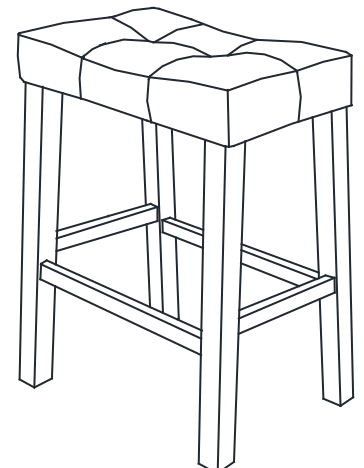
**Detail A**

Tighten all the bolts



**Detail B**

Assembly the stretchers with the legs by the wood screw



# Parts and Damage Replacement Procedure

1. Please inspect your purchase immediately.
2. This procedure covers product purchased from an authorized Reseller and was received in its originally sealed carton.

**A COPY OF YOUR PURCHASE RECEIPT OR INVOICE MUST BE ATTACHED TO THIS ORDER FORM.  
NO ORDERS WILL BE PROCESSED WITHOUT PROOF OF PURCHASE.**

NAME: \_\_\_\_\_  
ADDRESS: \_\_\_\_\_ (No Post Office Boxes)  
CITY: \_\_\_\_\_ STATE: \_\_\_\_\_ ZIP: \_\_\_\_\_  
PHONE: \_\_\_\_\_ FAX: \_\_\_\_\_  
EMAIL: \_\_\_\_\_

**REASON FOR REPLACEMENT/PLEASE CHECK APPROPRIATE BOX.**

- Damaged /scratched, cracked, broken, crushed, etc.
- Mechanical malfunction/ drawer glides, swivel mechanisms, lid stays, etc.
- Missing pieces
- Unfinished surface
- Wrong color
- Other

IF MORE THAN ONE MODEL NUMBER IS LISTED ABOVE, PLEASE SPECIFY THE EXACT MODEL NUMBER OF YOUR ITEM IN THE SPACE PROVIDED BELOW.

| Model Number | Part Letter Code | Quantity |
|--------------|------------------|----------|
|              |                  |          |
|              |                  |          |
|              |                  |          |