



# MOUNT-IT!

Premium AV & Office Products

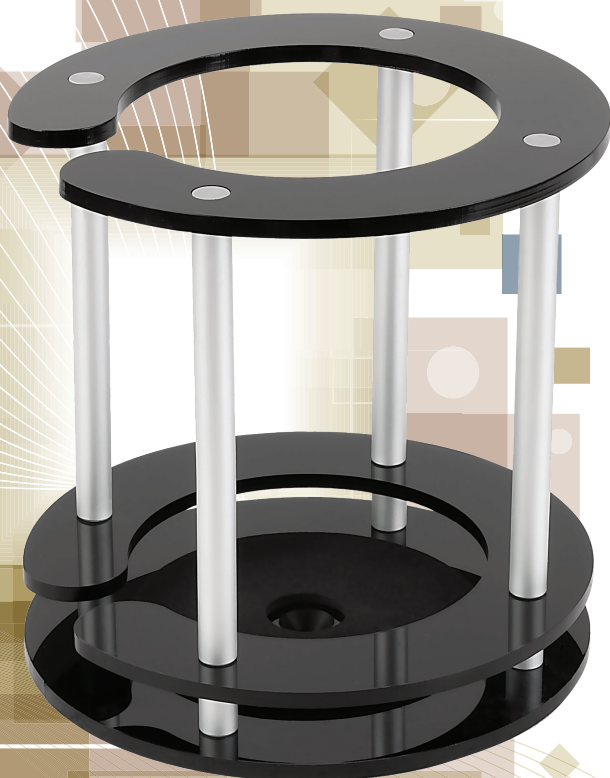
MI-SB56

## Premium Echo Stand Holder

PROTECT AND STABILIZE YOUR AMAZON ECHO

Mount-It! Premium Echo Stand Holder provides a perfectly sturdy and strong base to avoid your device from falling down if accidentally bumped by pets, children, or friends. The heavy-duty steel construction ensures the safety and stability of your speaker. Sleek design takes up minimal space and looks great for any room in the house.

- Designed for Echo devices
- Sturdy speaker stand for added protection
- Power cord accessibility



**DESIGN.** Ideal for home and office.

**SOLID SUPPORT.** Form fitting design.

**PREMIUM QUALITY.** Built to last.

MI-SB56

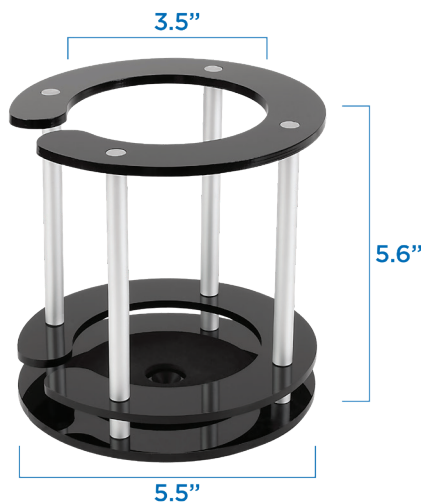
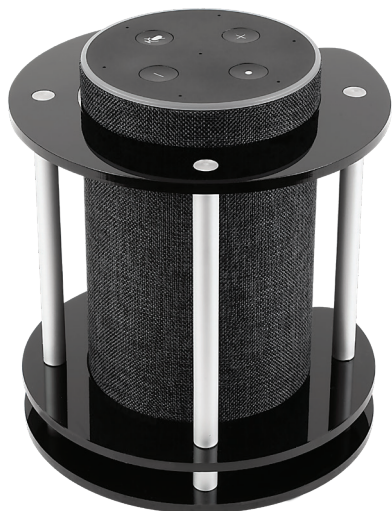
## Premium Echo Stand Holder

PROTECT AND STABILIZE YOUR AMAZON ECHO

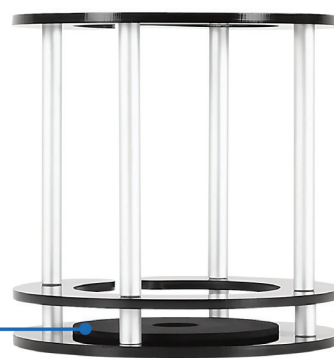
MOUNT-IT.COM

Tel: 858.413.7670 • Fax: 858.762.3757

Email: [sales@mount-it.com](mailto:sales@mount-it.com)



**SLIDE IN & OUT**  
with cord attached



**FOAM PADDING**  
protects device from damage

## SPECIFICATIONS

### PREMIUM ECHO STAND HOLDER

Cradle Dimensions: 3.48" D x 5.5" H

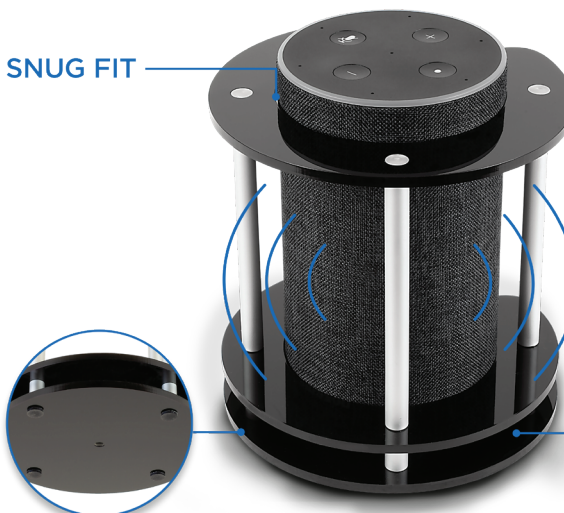
Product Dimensions: 5.5" D x 5.6" H

Materials: Acrylic and Metal Alloy

Compatibility: Echo (GEN 1 & 2), Echo Plus,  
Amazon Tap, UE Boom

- Unobstructed sound
- Zero interference with the microphone for voice commands
- Premium materials with an elegant finish
- Sleek, modern design
- Pre-Assembled

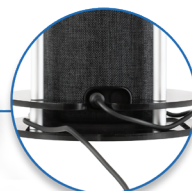
**SNUG FIT**



**OPEN DESIGN**



**PADDED BASE**



**CABLE MANAGEMENT**



**MOUNT-IT!**  
Premium AV & Office Products