


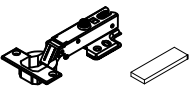





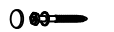


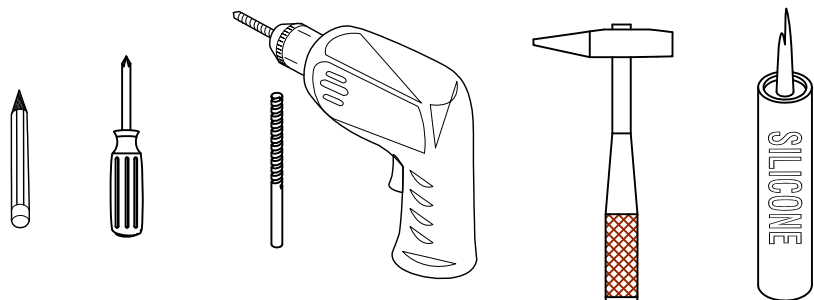


Item NO.:BV B06430

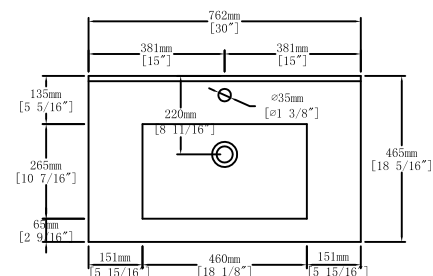
Hardware

NO.	Draw	QTY	NO.	Draw	QTY
A	 Screws Ø4x14mm	44	I	 Hinges (Internal hiding)	2
B	 Two-in-one connector	31	J	 Hinges (Full cover)	2
C	 Two-in-one connector	31	K	 Anti-collision gasket	4
D	 Wood plug	7	L	 Screwdriver	1
E	 Plastic anchor(Ø10mm)	4			
F	 Screws for fix on the wall	4			
G	 Bracket (53x70x44mm)	2			
H	 Bracket (19x19x35mm)	2			

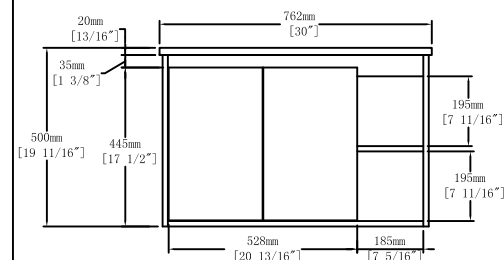
Recommended tools



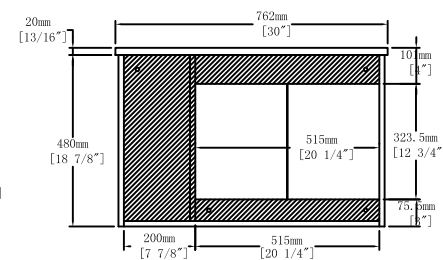
Dimensions



Top View



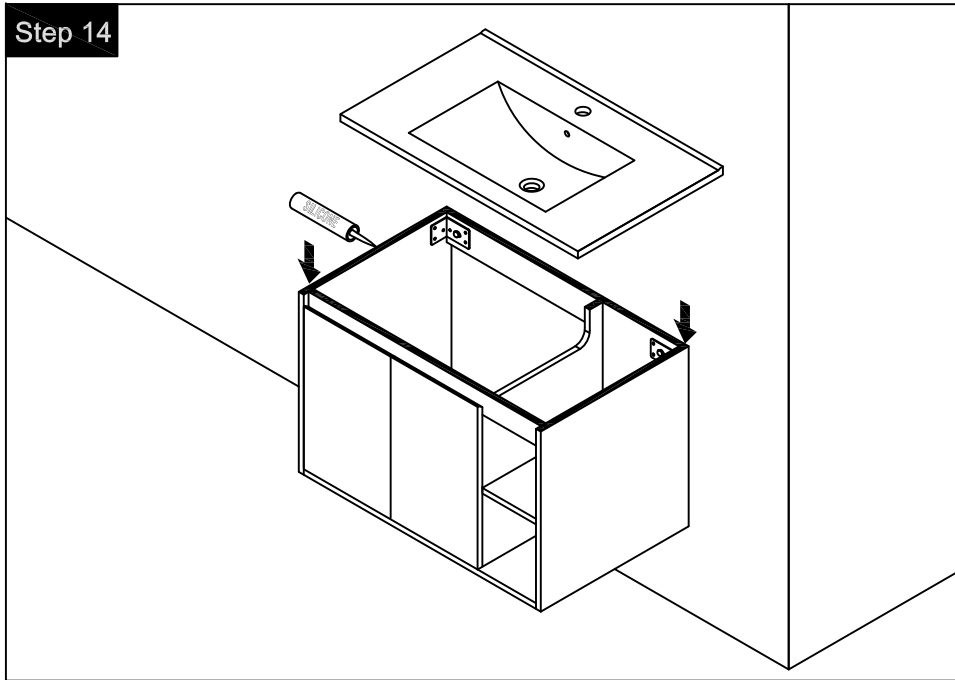
Front View



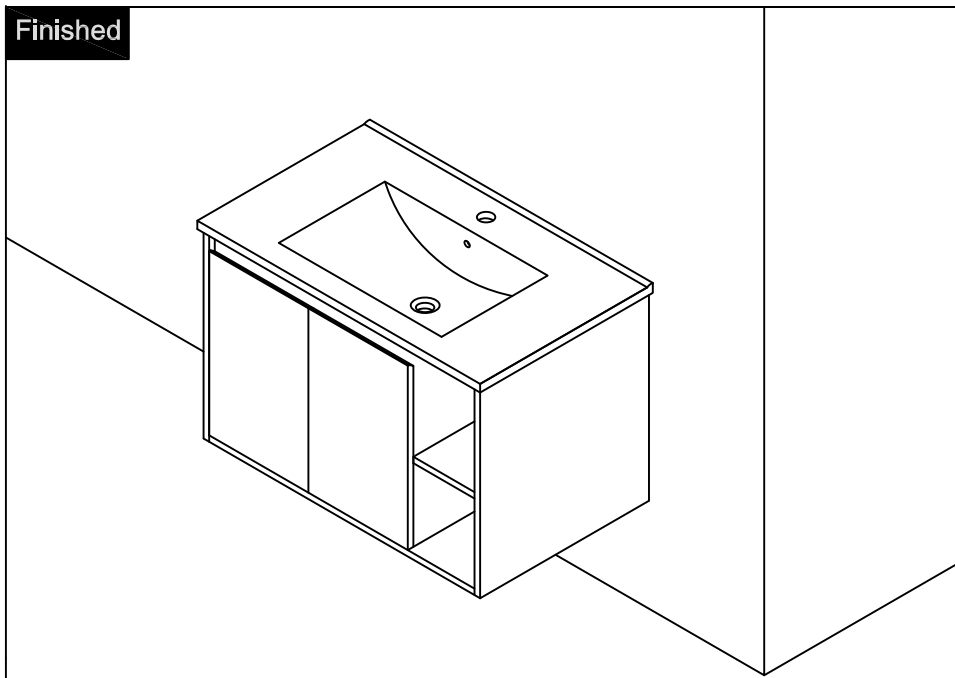
CARE CLEANING AND MAINTENANCE

- 1.Dust regularly with a soft , dry cloth.
- 2.Avoid the use of all chemicals household cleaners, abrasives, or cleaners that contain lemon, vinegar, or other acids that may damage the finish.
- 3.Excessive exposure to sunlight and extreme changes in temperature and moisture can damage wood furniture.
- 4.The sink top is resilient, but care needs to be taken to preserve its appearance.
- 5.Do not place hot appliances, such as curling irons and hot hair dryers directly on the countertop. Wipe spills immediately.

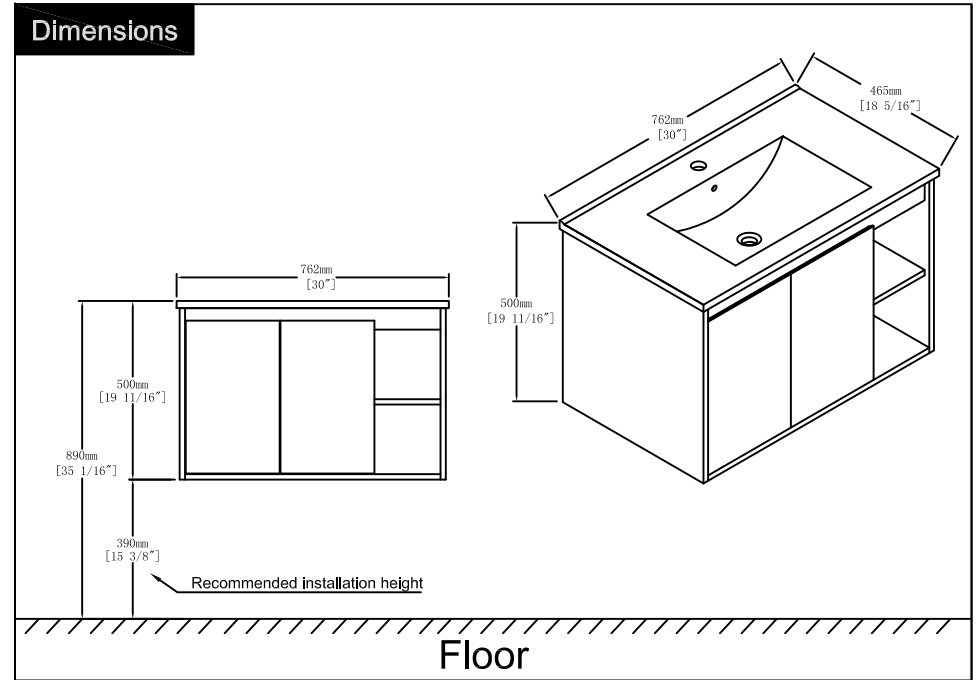
Step 14



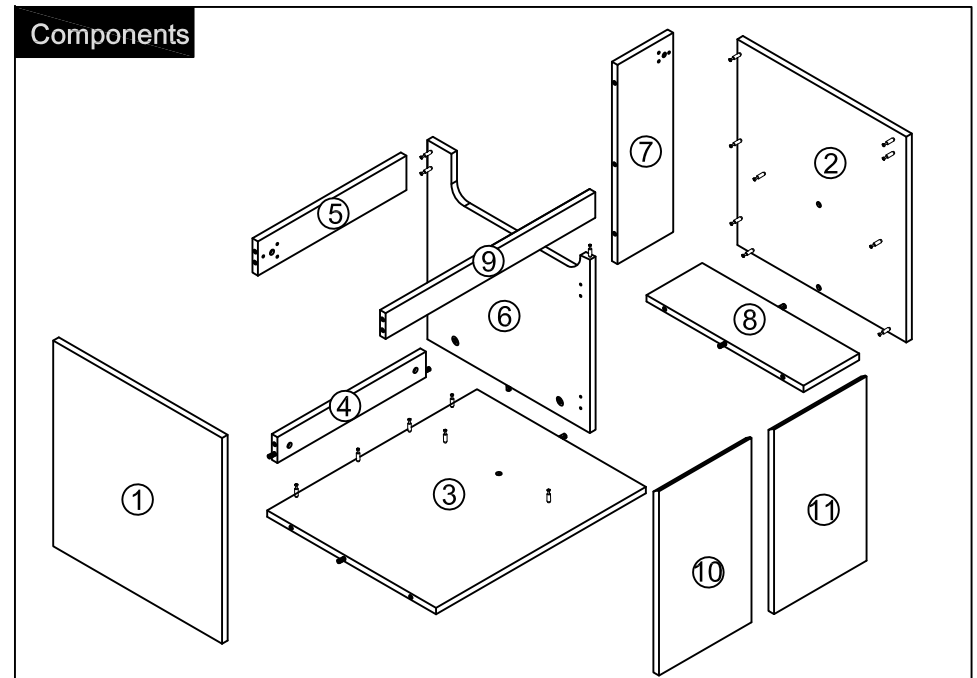
Finished



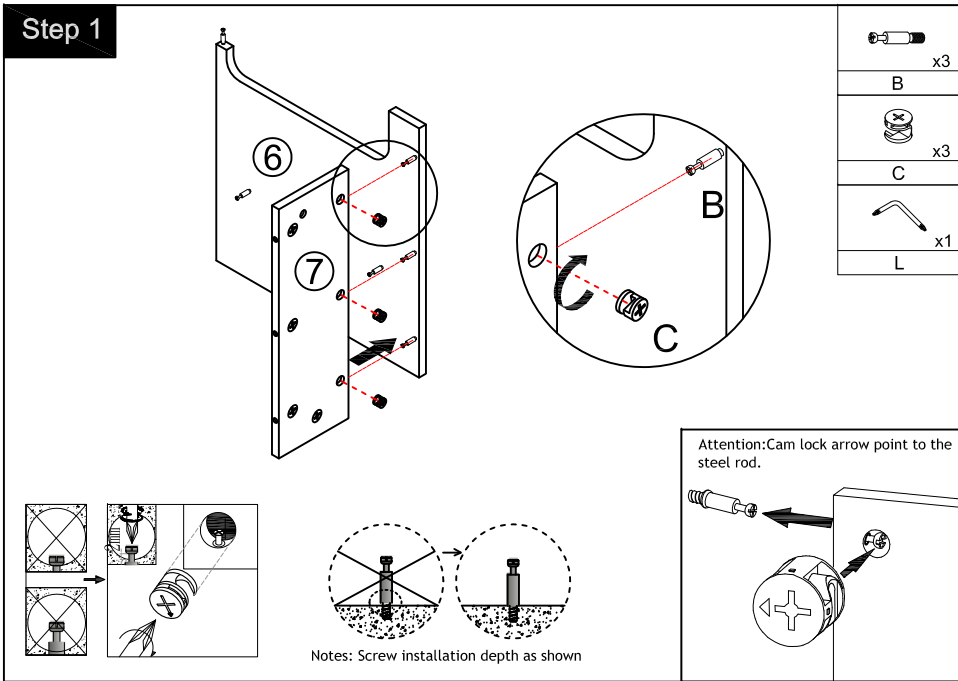
Dimensions



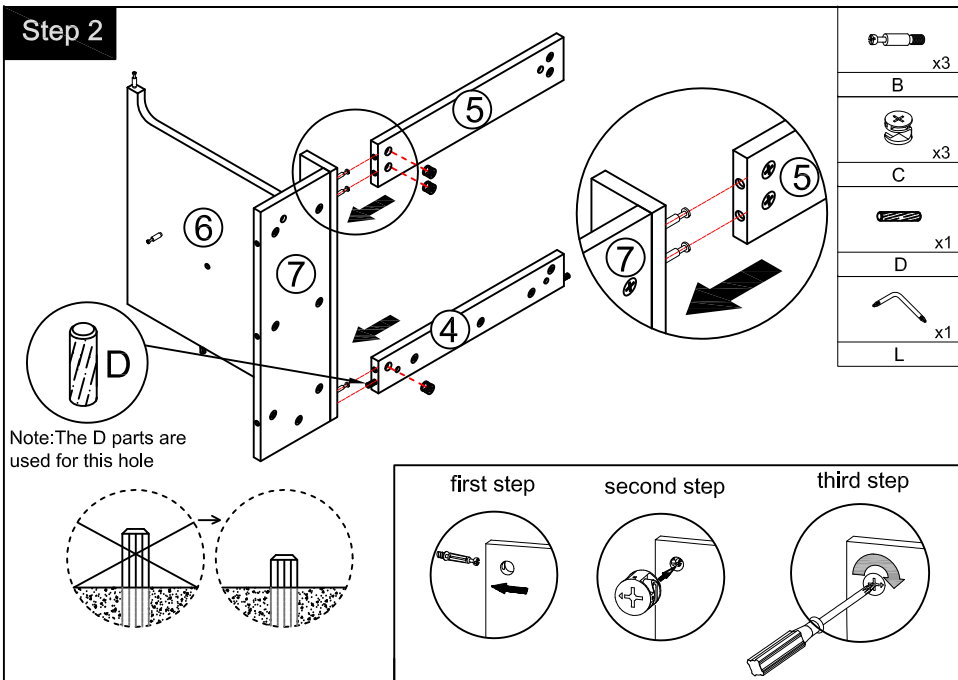
Components



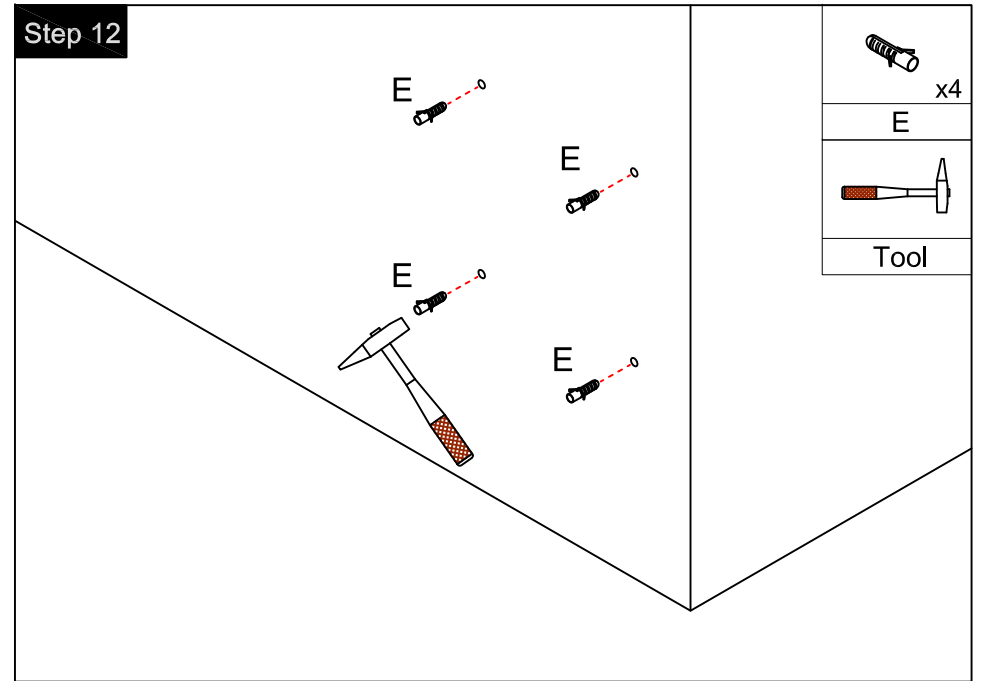
Step 1



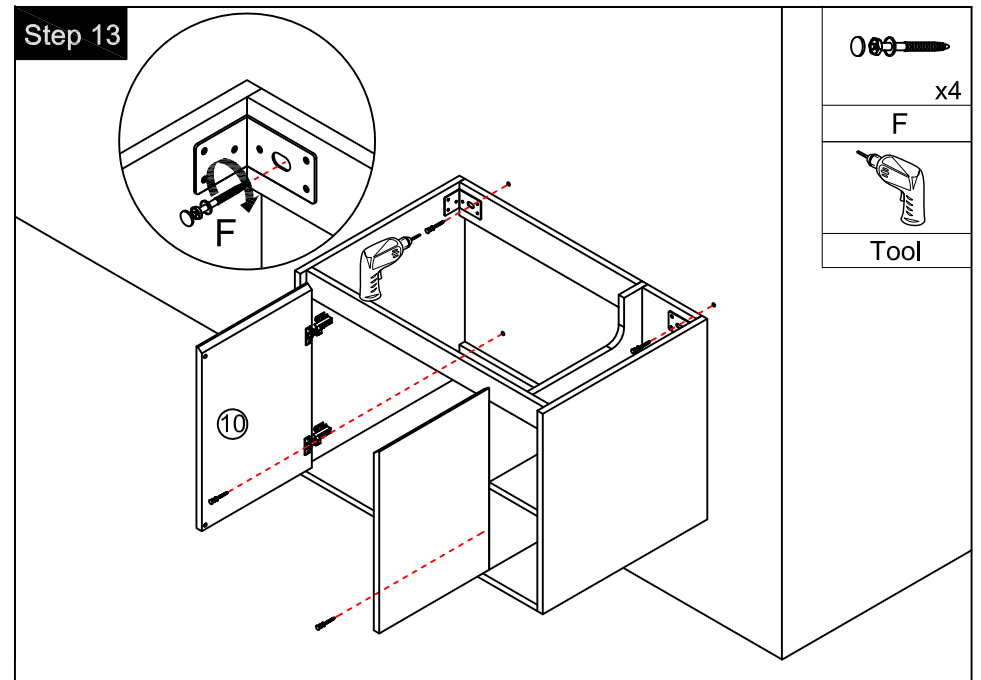
Step 2



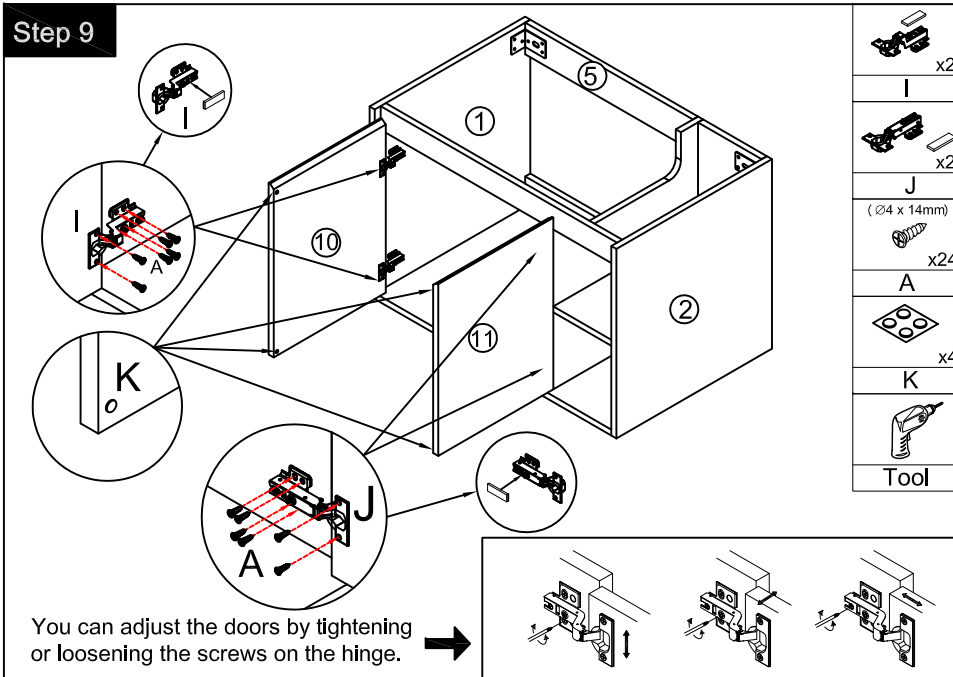
Step 12



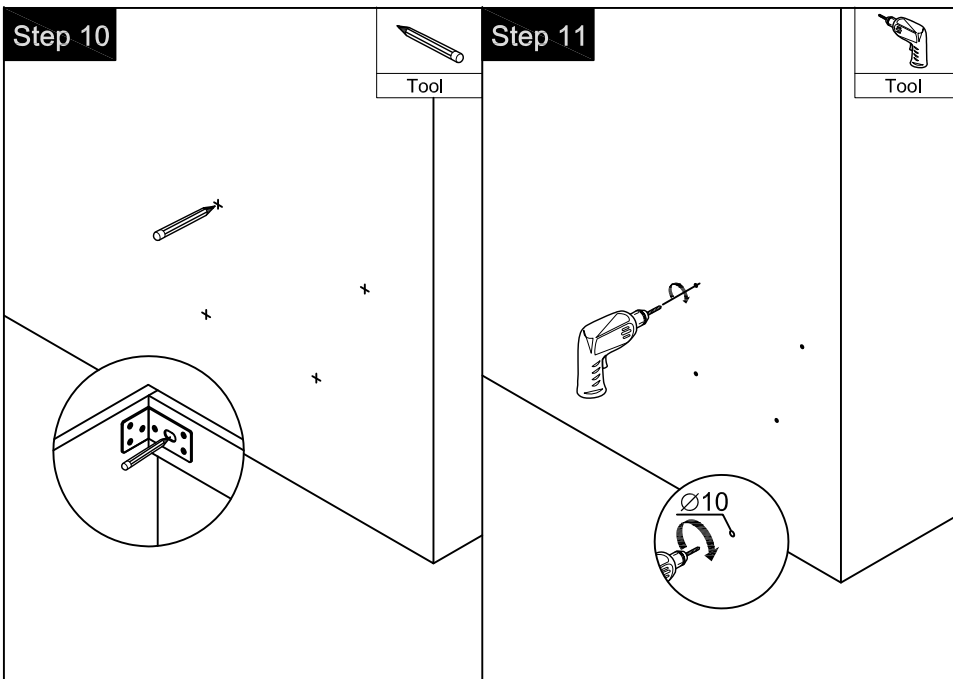
Step 13



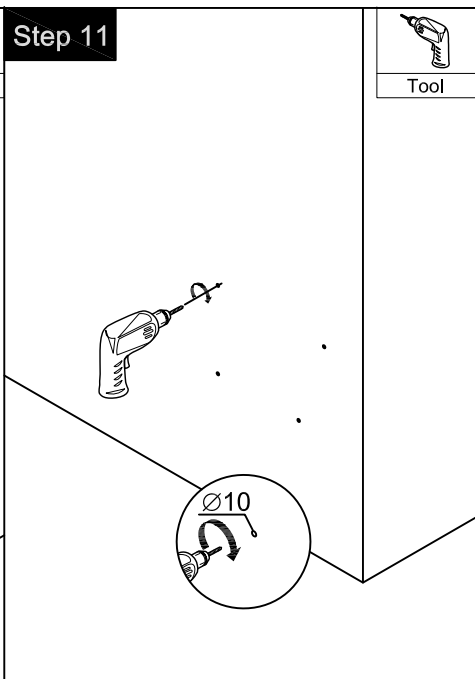
Step 9



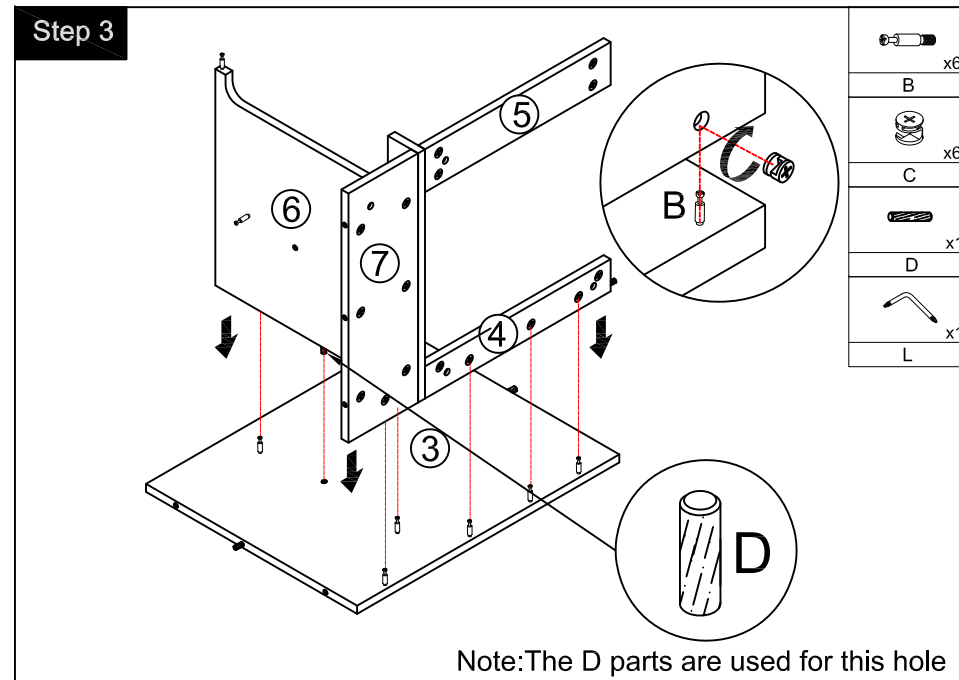
Step 10



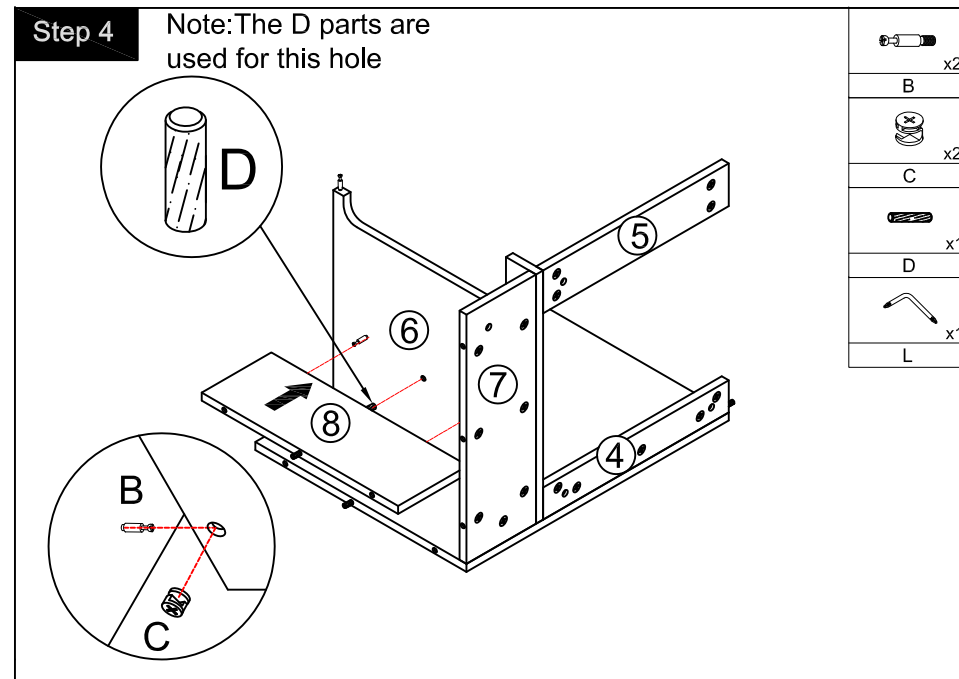
Step 11



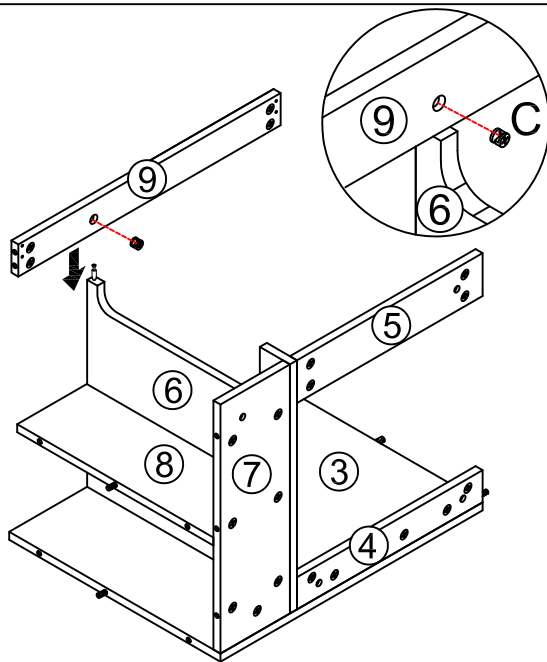
Step 3



Step 4

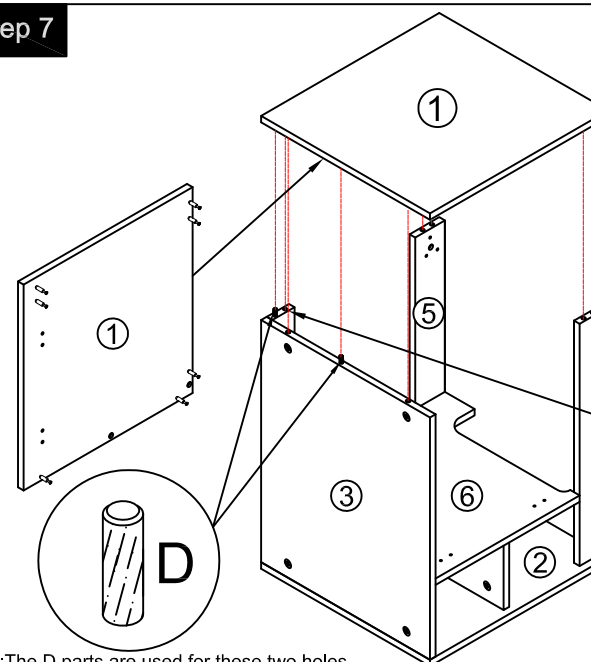


Step 5



	x1
	x1
	x1

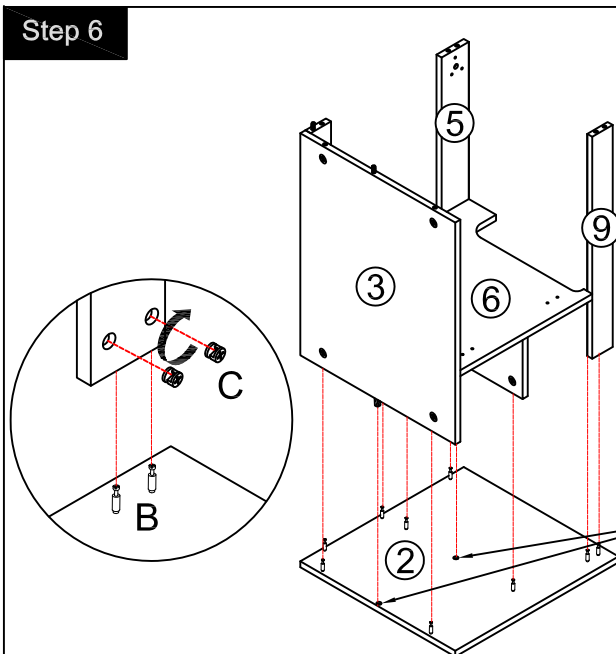
Step 7



Note: The D parts are used for these two holes

	x7
	x7
	x2
	x1

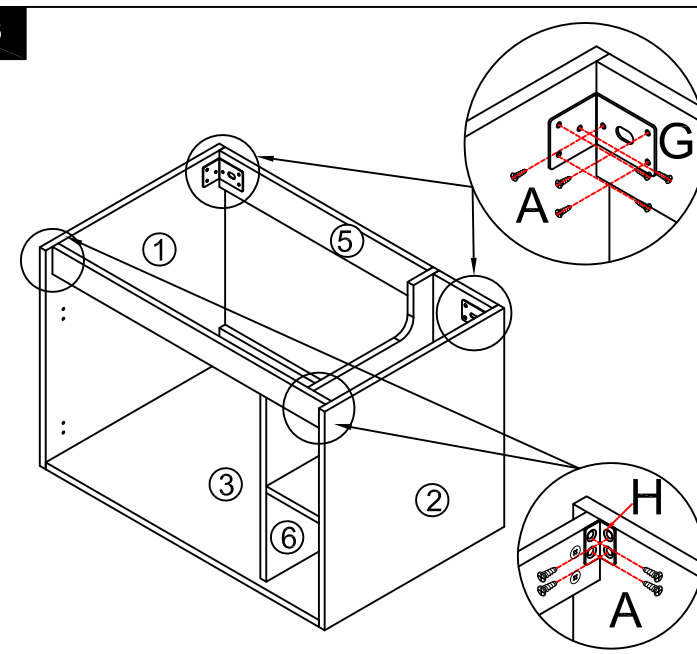
Step 6



	x9
	x9
	x2
	x1

Note: The D parts are used for these two holes

Step 8



	x2
	x2
	x20