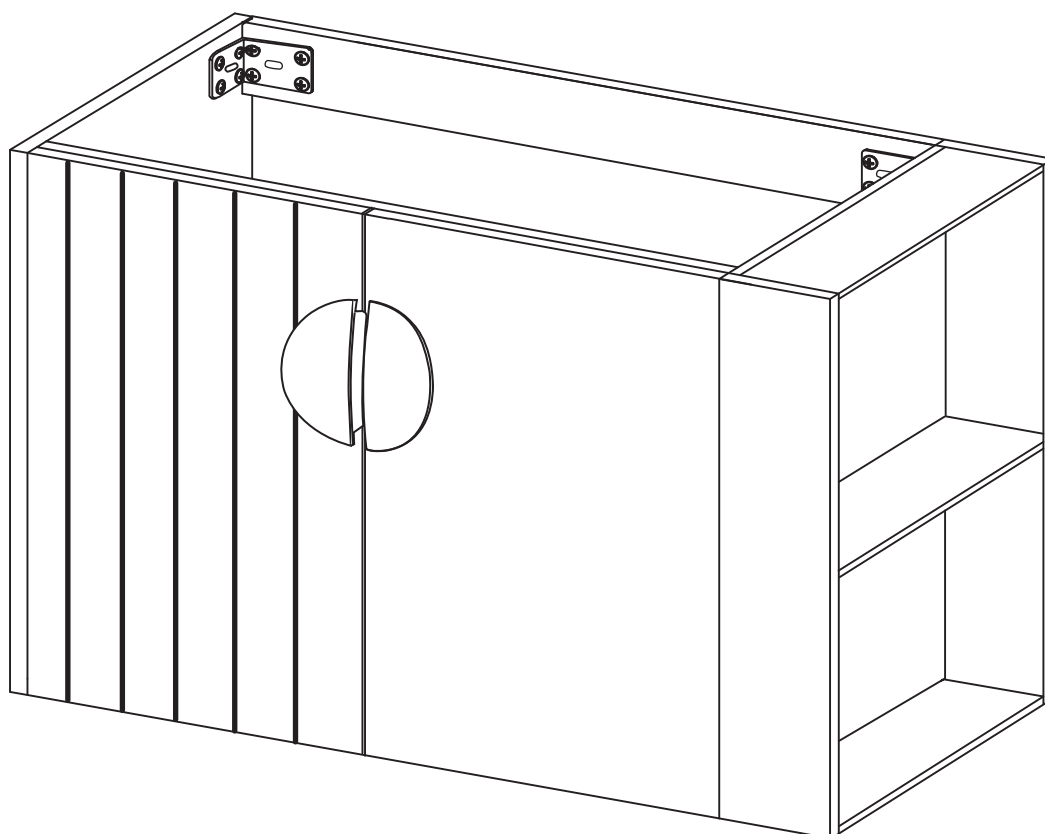


Assembly Instructions

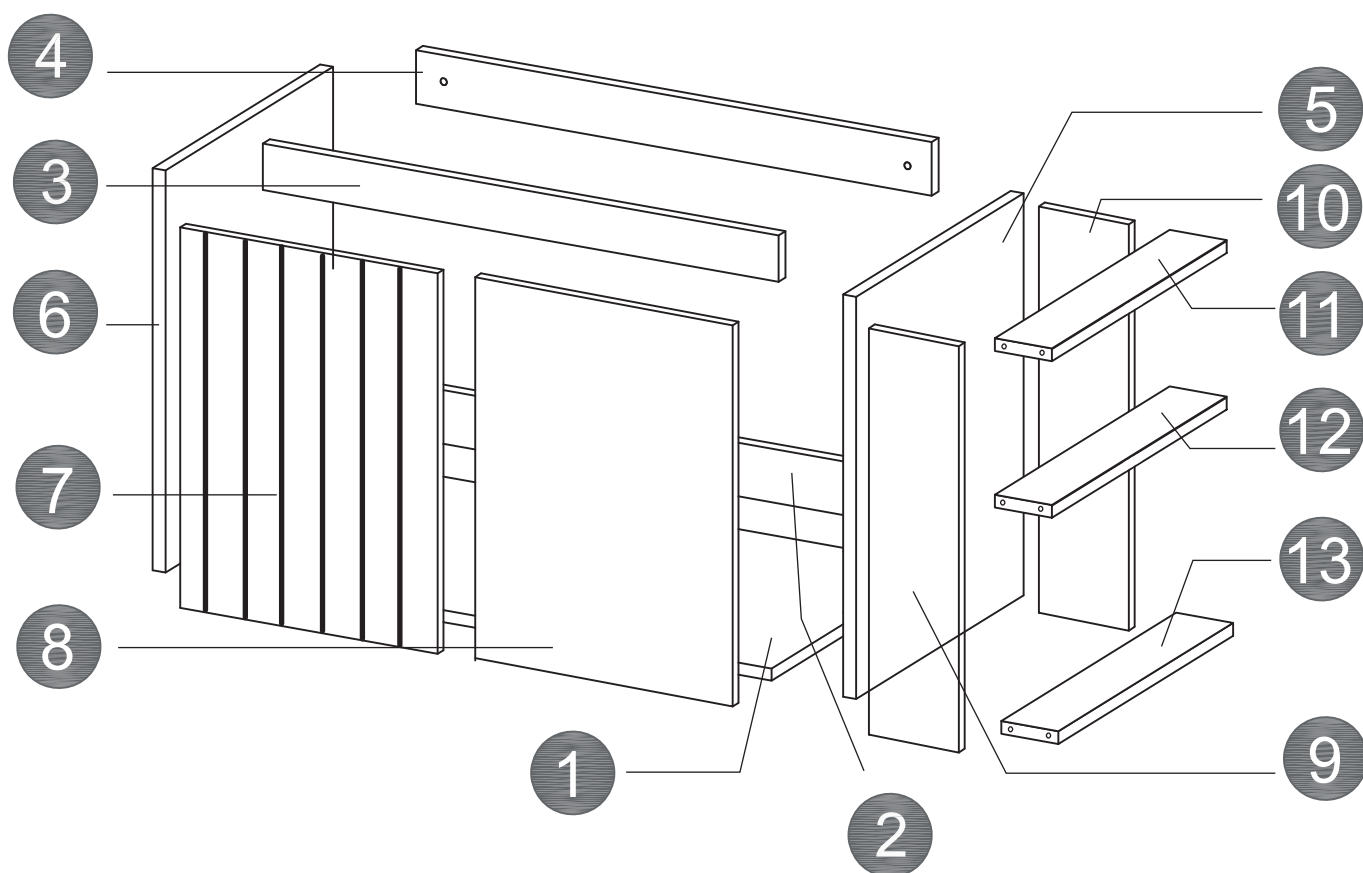




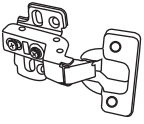


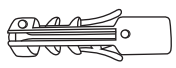



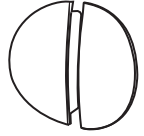
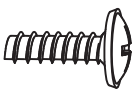
Warranty & Returns

Please contact us by scanning the QR code to get more services if there is any problem with the item rather than returning the parcel directly.

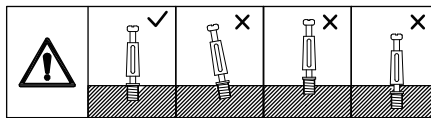
HARDWARE LIST

- 1 X1** **2 X1** **3 X1** **4 X1** **5 X1**
6 X1 **7 X1** **8 X1** **9 X1** **10 X1**
11 X1 **12 X1** **13 X1**



					
A = 38	B = 38	C = 4	D = 48	E = 2	F = 2
					
G = 2	H = 2	I = 2	J = 2	K = 5	

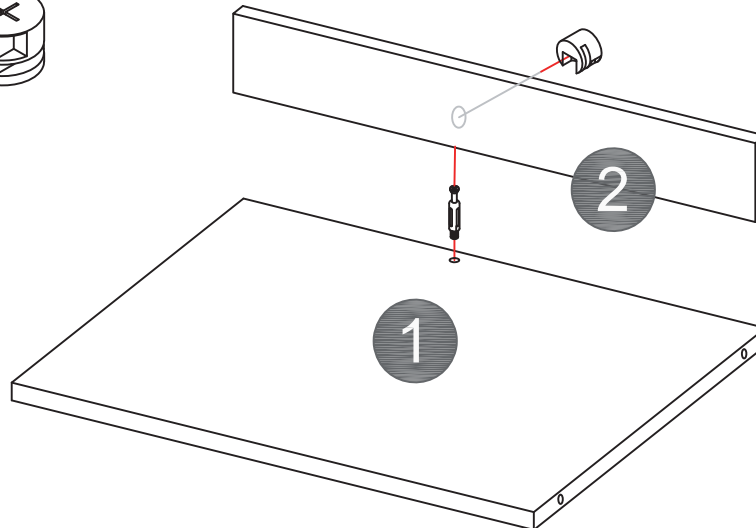
STEP 1



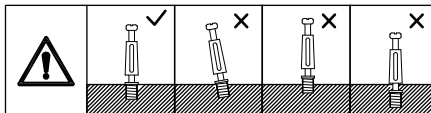
Note: Please make sure the screws are not too loose or too tight, or skewed.

A x1pcs 

B x1pcs 



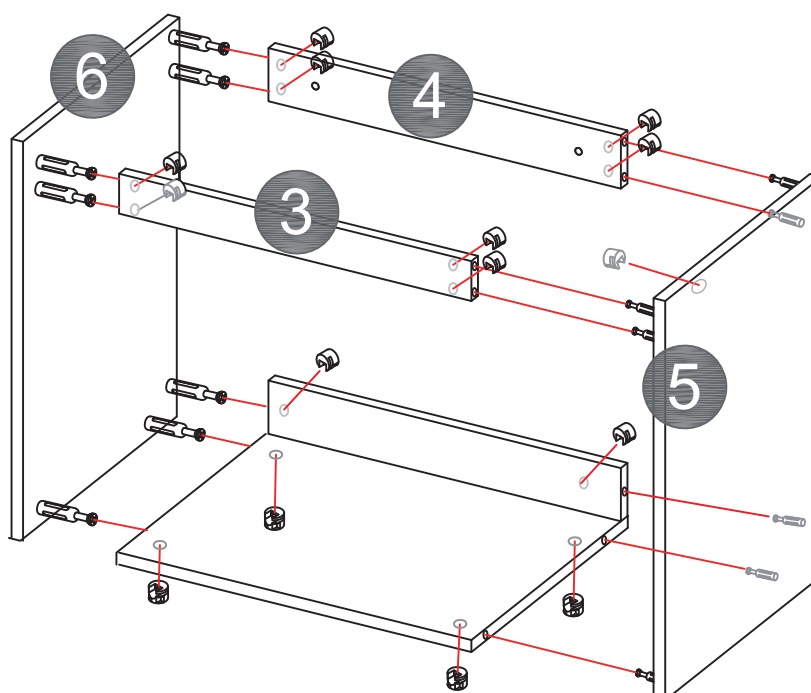
STEP 2



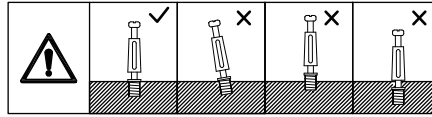
Note: Please make sure the screws are not too loose or too tight, or skewed.

A x14pcs 

B x14pcs 



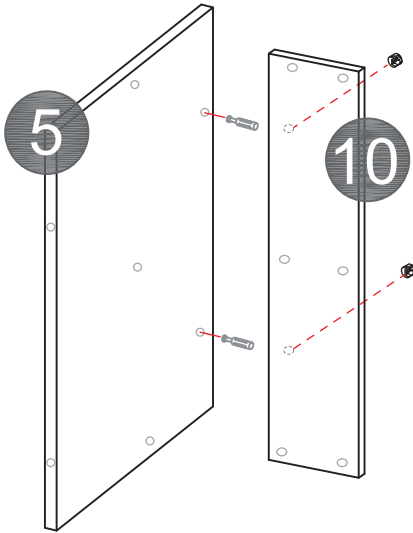
STEP 3



Note: Please make sure the screws are not too loose or too tight, or skewed.

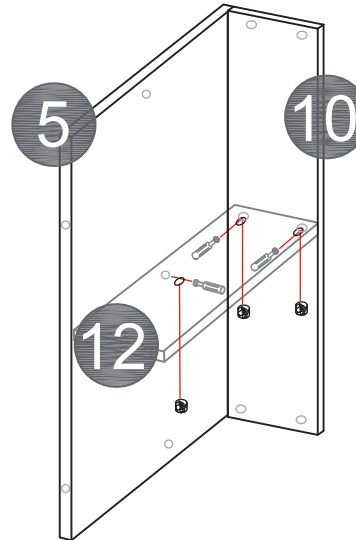
A x19pcs 

3-1



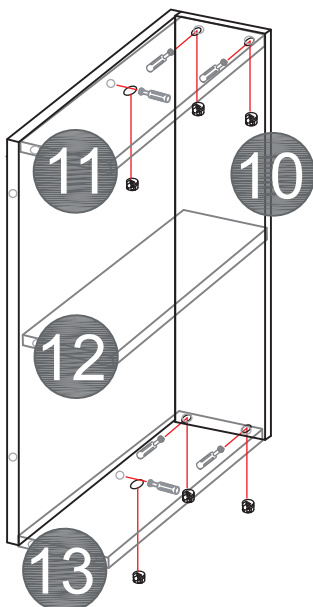
B x19pcs 

3-2

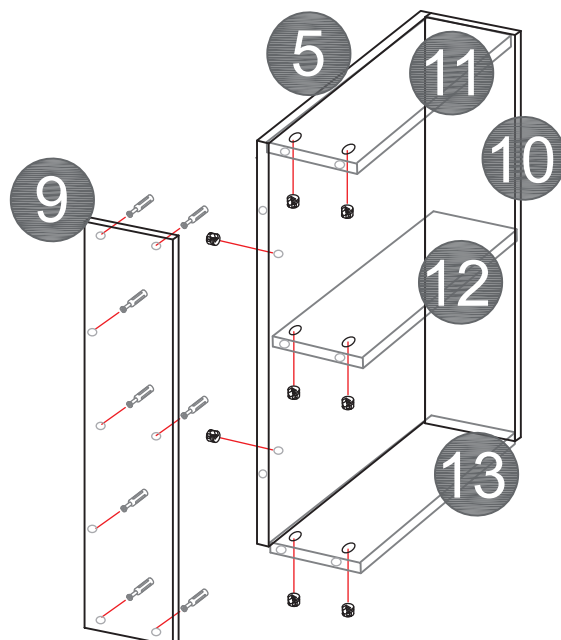


Please note that the holes on panels 11, 12, and 13 are facing down.
Please ensure the correct orientation to avoid installation errors!

3-3



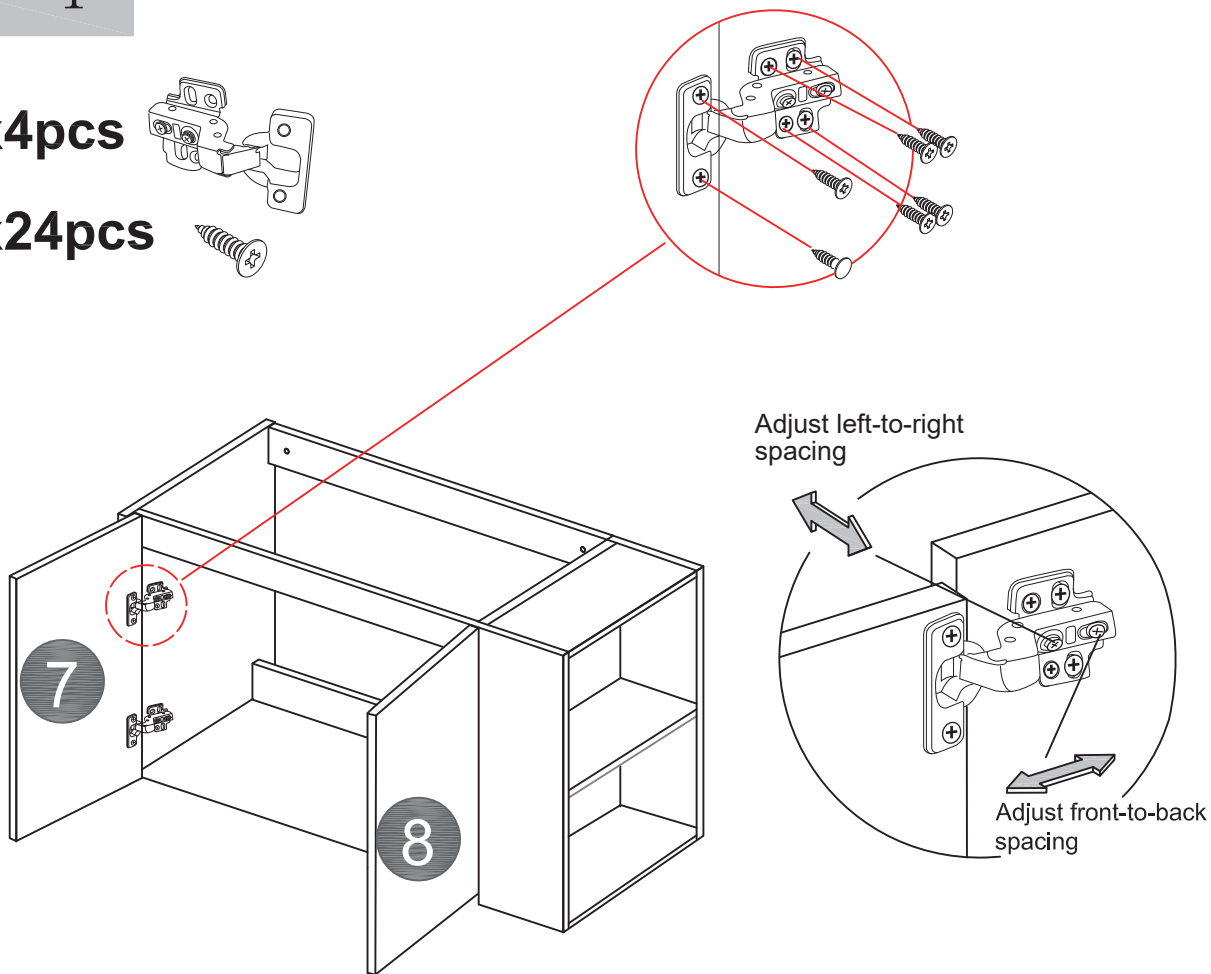
3-4



STEP 4

C x4pcs

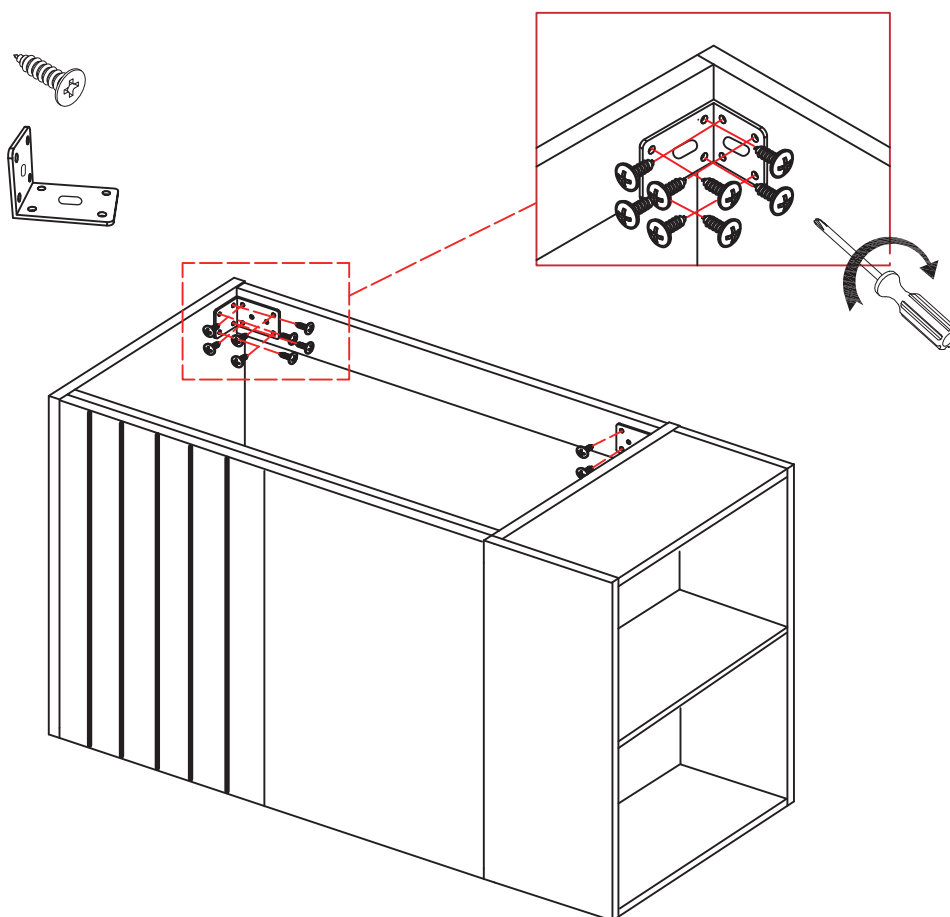
D x24pcs



STEP 5

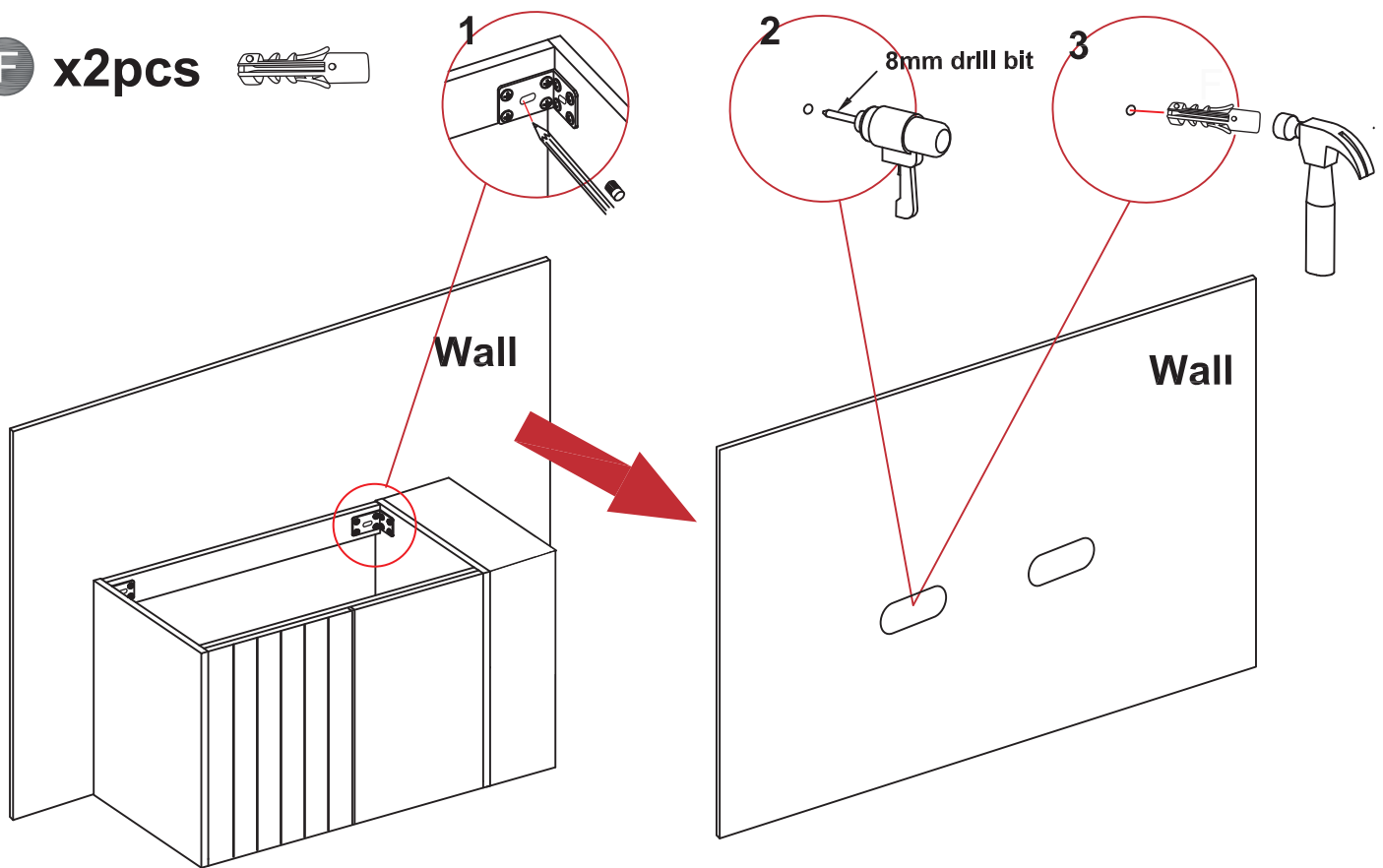
D x16pcs

E x2pcs



STEP 6

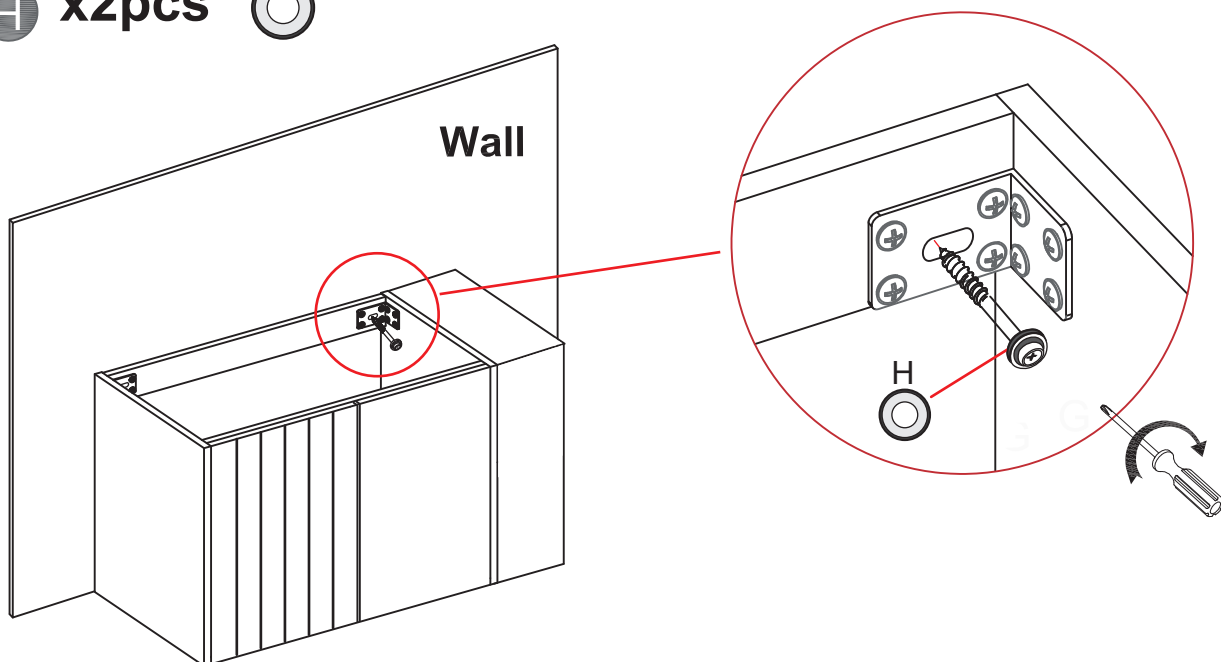
F x2pcs 



STEP 7

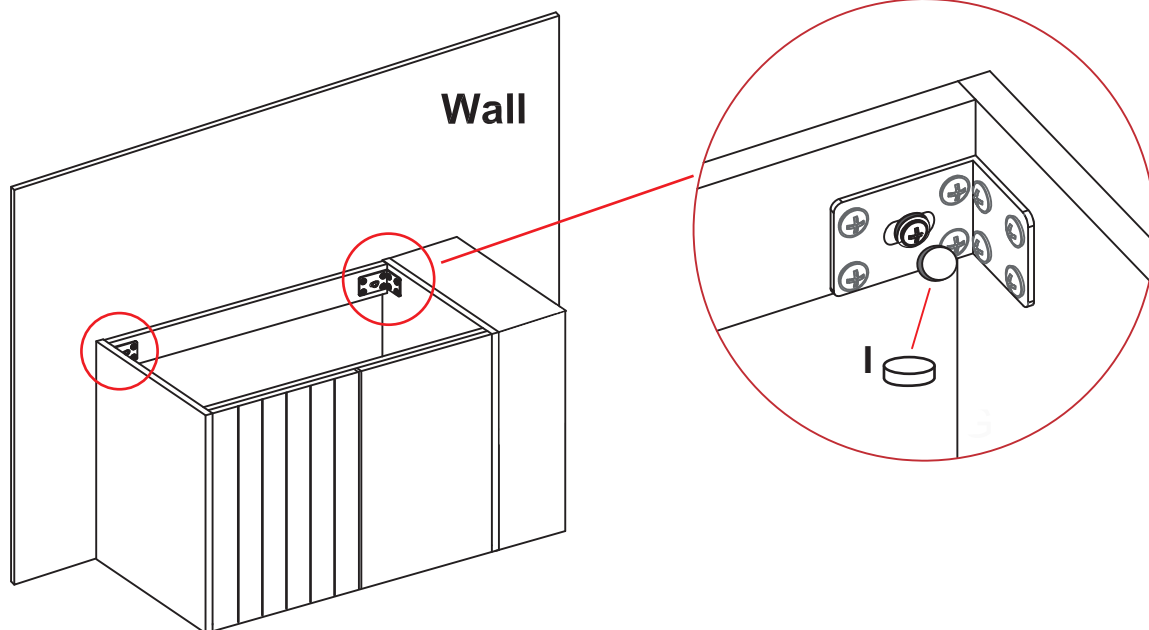
G x2pcs 

H x2pcs 



STEP 8

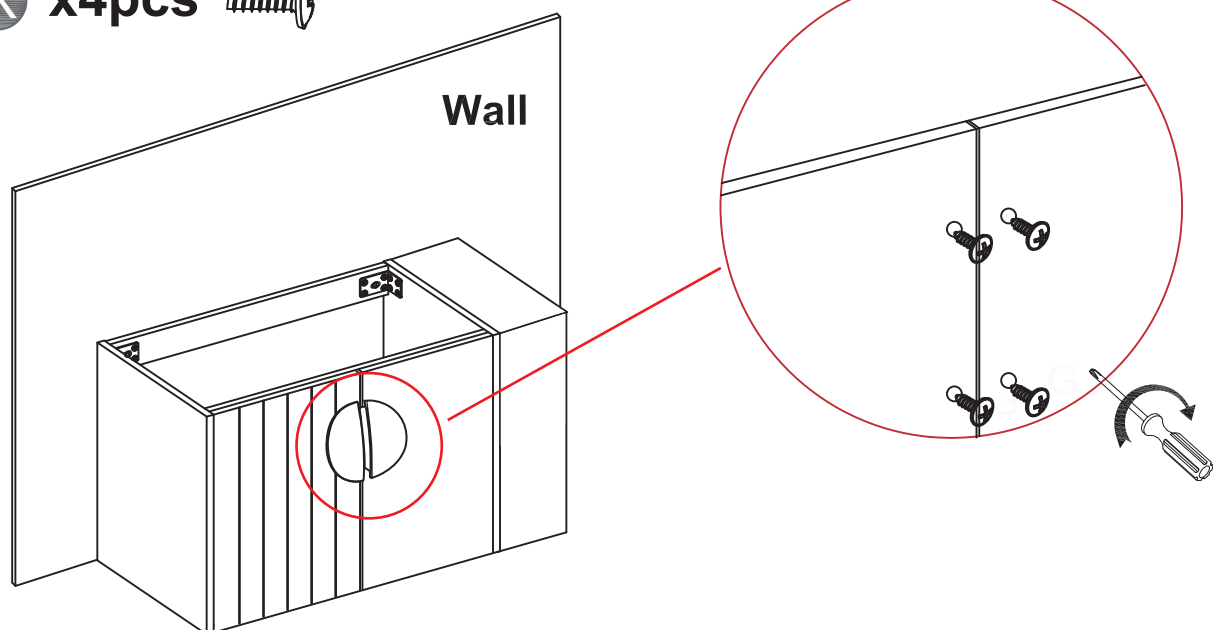
I x2pcs 



STEP 9

J x2pcs 

K x4pcs 



Finish!