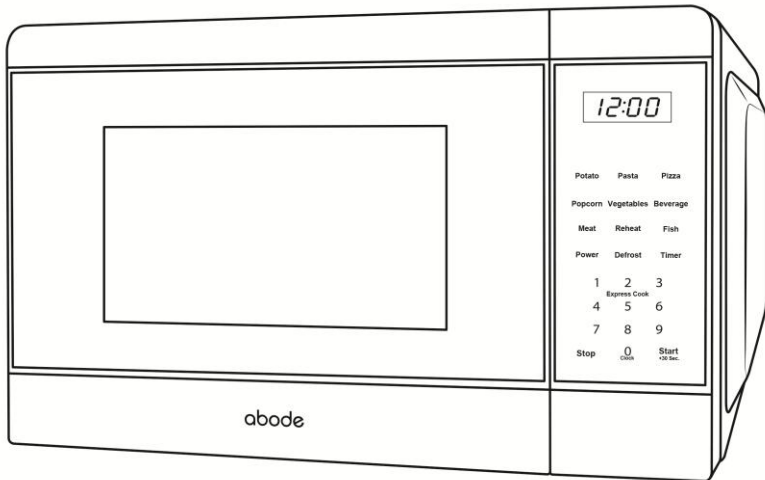


abode

20 Litre Digital Microwave with Touch Control



**Model Number:
AMT2008SS**

**PLEASE RETAIN FOR FUTURE
REFERENCE**

CONTENTS

	Page(s)
SAFETY INSTRUCTIONS	3-8
ABOUT YOUR MICROWAVE	9-10
PRODUCT INFORMATION	11
UNPACKING THE MICROWAVE	12
PRODUCT OVERVIEW	13
MICROWAVE OVEN INSTALLATION	14-15
TURNTABLE INSTALLATION	16-17
CONTROL PANEL	18
HOW TO USE THE MICROWAVE	19-24
COOKING TIPS	25
CLEANING THE MICROWAVE	26
PROBLEM SOLVING	27-30
GUARANTEE AND CUSTOMER SERVICES	31
SPARE PARTS	32
CONNECTION TO THE MAINS SUPPLY	33-34
NOTES	35
DISPOSAL	36

SAFETY INSTRUCTIONS

IMPORTANT SAFETY INSTRUCTIONS **READ CAREFULLY AND KEEP FOR FUTURE REFERENCE**

WARNING:

- This appliance is intended to be used in household and general domestic applications. It is not intended to be used in industrial or commercial applications.
- This appliance can be used by children aged from 8 years and above and persons with reduced physical, sensory or mental capabilities or lack of experience and knowledge if they have been given supervision or instruction concerning use of the appliance in a safe way and understand the hazards involved. Children shall not play with the appliance. Cleaning and user maintenance shall not be made by children without supervision.
- Keep the appliance and its cord out of reach of children less than 8 years.
- **WARNING:** if the door or door seals are damaged, the oven must not be operated until it has been repaired by a qualified technician.
- **WARNING:** it is hazardous for anyone other than a qualified technician to carry out any service or repair operation that involves the removal of a cover which gives protection against exposure to microwave energy.
- **WARNING:** liquids and other foods must not be heated in sealed containers since they are liable to explode.

SAFETY INSTRUCTIONS

READ CAREFULLY AND KEEP FOR FUTURE REFERENCE

WARNING:

- A minimum clearance of 7.5cm is required between the oven and any adjacent walls. Leave a minimum clearance of 30cm above the oven.
- Only use utensils that are suitable for use in microwave ovens.
- Metallic containers for food and beverages are not safe for use during microwave cooking.
- The appliance shall not be cleaned with a steam cleaner.
- When heating food in plastic or paper containers, keep an eye on the oven due to the possibility of ignition.
- This microwave is intended for heating food and beverages only. The drying of food or clothing and heating of warming pads, wheat bags, slippers, sponges, damp cloth and similar is extremely dangerous and may lead to risk of injury, ignition or fire.
- If materials inside the oven smoke or catch fire, keep the oven door closed to stifle the flames. Ensure that you turn the oven off at the wall switch or shut the power off at the fuse or circuit-breaker panel. If smoke is emitted, switch off or unplug the appliance and keep the door closed in order to stifle any flames.
- Microwave heating of beverages can result in delayed eruptive boiling, therefore care must be taken when handling the container.

SAFETY INSTRUCTIONS

READ CAREFULLY AND KEEP FOR FUTURE REFERENCE

WARNING:

- The contents of feeding bottles and baby food jars shall be stirred or shaken and the temperature checked before consumption, to avoid burns. Do not heat baby bottles with the teat left on and remove it if putting the bottle back into the oven.
- Eggs in their shell and whole hard-boiled eggs should not be heated in microwave ovens since they may explode, even after microwave heating has ended.
- The oven should be cleaned regularly and any food deposits removed.
- Failure to maintain the oven in a clean condition could lead to deterioration of the surface that could adversely affect the life of the appliance and possibly result in a hazardous situation.
- The microwave oven should be used freestanding only and must not be built-in or used in a cabinet
- If the supply cord is damaged, it must be replaced by the manufacturer, its service agent or similarly qualified persons in order to avoid a hazard.
- To avoid fire, electric shock, or injury, never immerse the microwave, cord, or plug in water or liquid.
- Do not use attachments not recommended by the manufacturer. Only use thermometers approved for use in microwaves.

SAFETY INSTRUCTIONS

READ CAREFULLY AND KEEP FOR FUTURE REFERENCE

WARNING:

- The appliance and its accessible parts may become hot during use. Care should be taken to avoid touching heating elements.
- Do not leave the microwave oven unattended while you are using it.
- Do not use the microwave when it is empty. This could damage the oven.
- Do not use metal pans, dishes with metal handles or anything with a metal trim inside the microwave. Do not use paper covered wire twist-ties on plastic bags.
- Never put objects into the openings on the outer case.
- Food containing a mixture of fat and water (for example, stock) should stand for 30 to 60 seconds in the oven after it has been turned off. This is to allow the mixture to settle and to prevent it from bubbling when a spoon is placed in it or a stock cube is added.
- When heating or cooking food or liquid, remember that there are certain foods (such as, jam, Christmas pudding, and mincemeat) which heat up very quickly.
- Before cooking, pierce foods with a skin or membrane, such as egg yolks, potatoes, chicken livers, sausages and ready meals, several times with a fork.
- Do not try to deep-fry foods in this microwave oven.

SAFETY INSTRUCTIONS

READ CAREFULLY AND KEEP FOR FUTURE REFERENCE

WARNING:

- Do not overcook food.
- Please remember that as food or liquids heat up, they will release steam or may begin spitting. Never cover any container fully, always leave a gap for steam to escape.
- Do not use plastic containers when heating or cooking foods that contain a lot of fat or sugar.
- Always have the glass turntable and turntable support in place when using the microwave oven.
- Do not cook food directly on the glass turntable. Put food on a suitable plate or in a bowl before putting it in the oven.
- Do not use melamine dishes as they contain a material which will absorb microwave energy. This may cause the dishes to crack or burn, and will slow down the cooking speed.
- Do not use the microwave oven for heating utensils, plates or dishes.
- Do not cook using a container with a restricted opening such as bottles, as they may explode.
- Before you clean your microwave oven, turn it off and unplug it.
- Keep the inside of the oven clean. When food or liquids stick to the oven walls, wipe with a damp cloth. We recommend that you do not use harsh detergent or abrasives.

SAFETY INSTRUCTIONS

READ CAREFULLY AND KEEP FOR FUTURE REFERENCE

WARNING:

- If steam builds up inside or around the outside of the oven door, wipe with a soft cloth. This may happen when the microwave oven is used in humid conditions.
- The appliance is not intended to be operated by means of an external timer or separate remote-control system.
- On the right hand wall of the cavity is the waveguide cover, microwaves are passed through this to enable your food to cook. **It is important that this waveguide cover is kept clean at all times.** To do this wipe with mild detergent and water, then dry.
- You should clean the outside of the oven with a damp cloth. Do not allow water to seep into the ventilation openings.
- Do not use harsh abrasive cleaners or sharp metal scrapers to clean the oven door glass as they can scratch the surface, which may result in shattering of the glass.

ABOUT YOUR MICROWAVE

Thank you for purchasing your Abode microwave oven.

Designed with style and practicality in mind, this 20L touch control digital microwave boasts impressive functionality, with a range of programmes to help make mealtimes easier.

With an easy-clean touch control panel, this appliance is sleek, stylish and easy to use. Offering 800W of microwave power, there are 10 power levels to choose from, providing you with quick and convenient cooking in your home. There's plenty of space for a round dinner plate up to 10.5"/26.5cm.

The AMT2008SS boasts added features to enhance your cooking experience. As well as simple microwaving and defrosting, you can choose from 8 auto cook menus that make your life easier. Cook anything from popcorn to pizza, potatoes and even fish.

Making your favourite meals should be simple. For added functionality, there's also a defrost setting, saving you time so that you can heat meals straight from the freezer. Simply input the weight of the food you need defrosting and go! Cooking has never been so easy.

For added peace of mind, this microwave comes with a 1-Year Guarantee. This way, in the unlikely event something goes wrong, you know we'll always be on hand to help.

ABOUT YOUR MICROWAVE

How do microwaves work?

Microwaves are high-frequency electromagnetic waves similar to radio waves. While radio waves may vary in length from one metre to many kilometres, microwaves are very short (less than 12.5 centimetres.)

Microwaves do not make any heat themselves but cause water molecules in food to vibrate.

This vibration produces heat that cooks the food. This is why your food will come out of the microwave piping hot, when your utensils inside the oven stay much cooler. The microwaves do not stay in the air or in the food when you open the microwave oven door.

The microwave oven will work using an ordinary household electrical socket. Inside the microwave oven is the magnetron, which turns the electrical energy into microwaves.

Microwaves cannot travel through metal, so the inside of the oven is lined with metal. The door is lined with a fine metal mesh which stops microwaves getting through. This means that when the microwave oven door is shut, there is no possibility that microwaves can be released.

PRODUCT INFORMATION

Rated Voltage	AC220-240V/50Hz
Rated Output Power (Microwave)	800W
Oven Capacity (litres)	20*
Turntable Diameter	25.5cm
External Dimensions (H x W x D)	28.6 x 45.6 x 36.3cm
Net Weight; Approx	11.3kg
Number of Power Levels	10 + Defrost
Accessories Included	Turntable coupling Turntable roller ring Glass turntable

Energy Consumption

Product information for power consumption and maximum time to reach applicable low power mode.

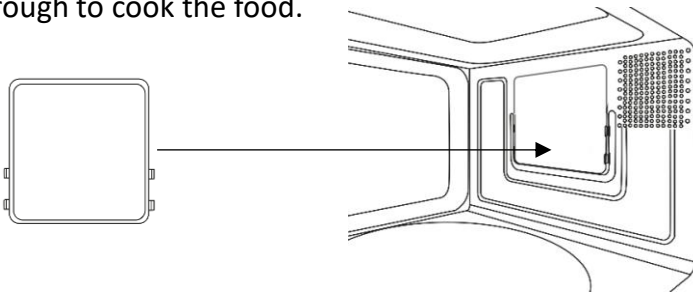
Standby mode	<0.8 W
The maximum time needed for the microwave oven to automatically reach the applicable low power mode or condition	20 minutes

*Internal volume is calculated by measuring maximum width, depth and height. Actual capacity for holding food is less.

UNPACKING THE MICROWAVE

Before you use your microwave oven

1. Remove all the packaging. **Do not** remove the large piece of plastic from the right hand side of the cavity wall (Refer to the below image). This is called a waveguide cover and allows the microwaves to pass through to cook the food.



Please ensure you keep this cover clean at all times by wiping with a damp cloth. Do not remove/place in a dishwasher.

2. Check the oven after unpacking for any visual damage such as:

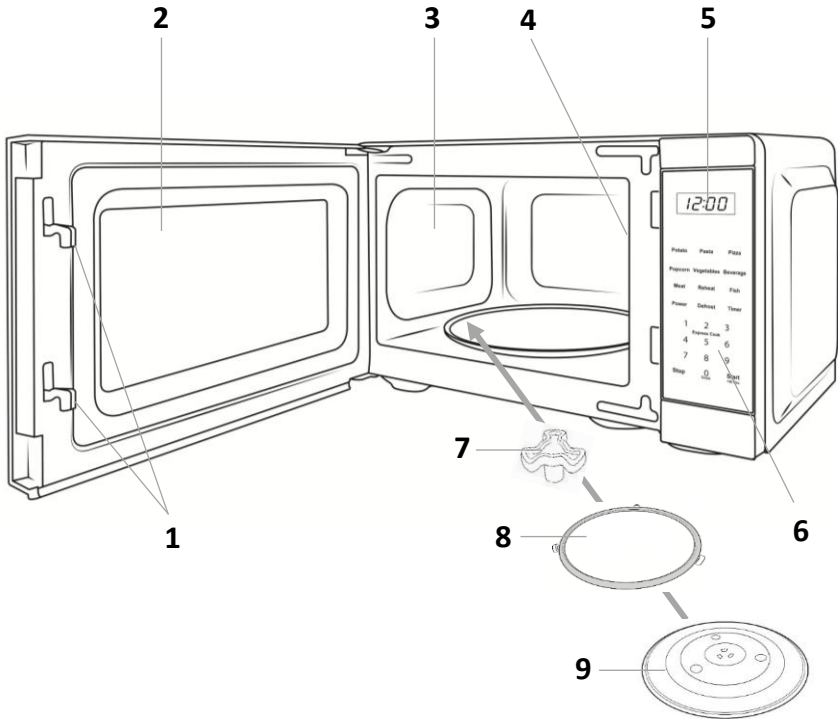
- A misaligned door
- Damage to the door
- Dents or holes in the door window and screen
- Dents in the inside

If you can see any damage **do not use the oven**, please call **0345 209 7461**.

As this microwave oven weighs approximately 11.3kg, you must put it on a horizontal surface that is strong enough to support this weight.

The oven must be placed away from high temperatures and steam. Do not put anything on the top of the microwave oven.

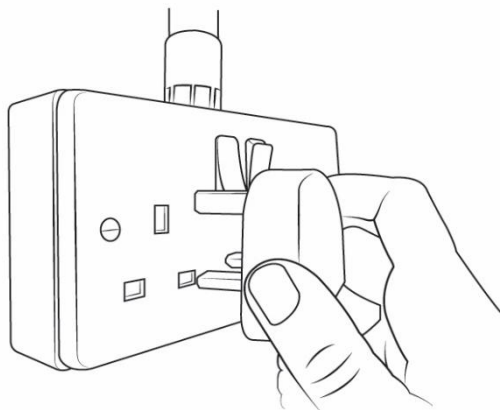
PRODUCT OVERVIEW



- | | |
|------------------------------------|----------------------------------|
| 1. Safety interlock latches | 5. Screen display |
| 2. Door assembly and window | 6. Control panel (touch control) |
| 3. Oven cavity | 7. Turntable coupling |
| 4. Waveguide cover (do not remove) | 8. Roller ring |
| | 9. Glass turntable |

MICROWAVE OVEN INSTALLATION

- Place the oven as far away from radios and televisions as possible. Using the oven may cause interference with the reception.
- Plug the oven into a suitable 13 amp mains socket, make sure the voltage is the same as on the rating label (do not use extension cables or mains socket adaptors.)



- The microwave oven should be used freestanding only and must not be built-in or used in a cabinet.
- Select a level surface that provides enough space for the outlet vents.

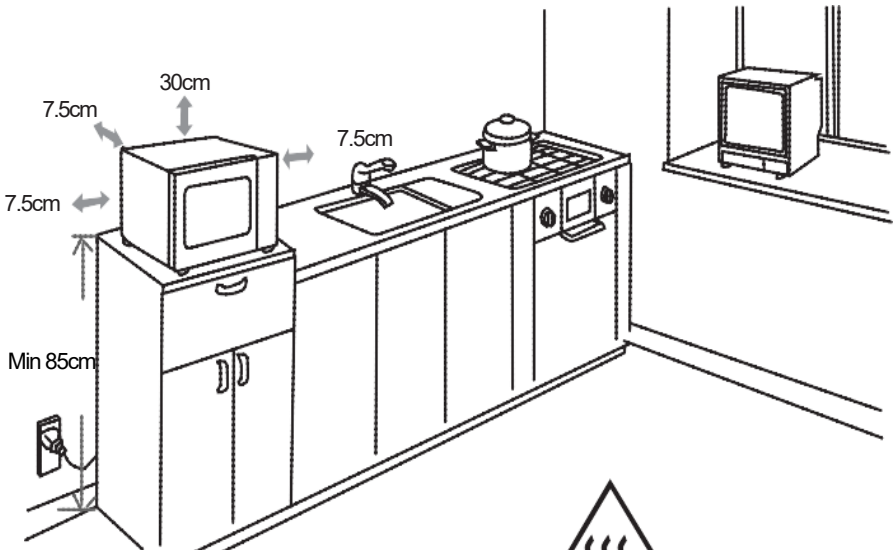
MICROWAVE OVEN INSTALLATION

The minimum installation height is 85cm.

A minimum clearance of 7.5cm is required between the oven and any adjacent walls. Leave a minimum clearance of 30cm above the oven.

WARNING:

DO NOT install the oven over a cooker or other heat or steam producing appliance as this will damage the microwave oven.



DO NOT obstruct
the ventilation
from the microwave

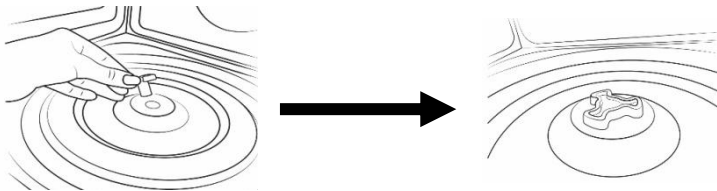


This symbol means
“CAUTION: Hot Surface”

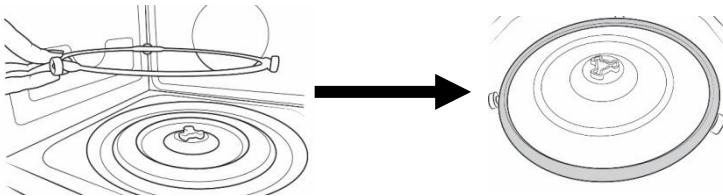
TURNTABLE INSTALLATION

- Before first use, check that any securing tape and all packaging has been removed from the glass turntable and turntable ring assembly.
- **These parts must never be restricted from rotating.**
- Never place the glass turntable upside down.
- To assemble the turntable, follow the steps below in number order.

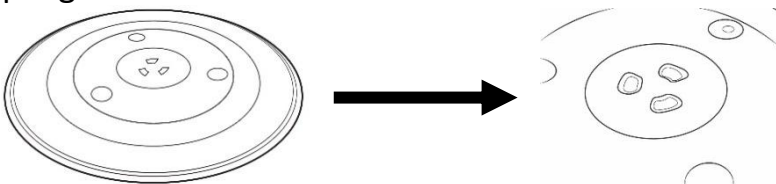
STEP 1) The turntable coupling should slot into the centre of microwave



STEP 2) The turntable ring slots into the indents in the microwave base

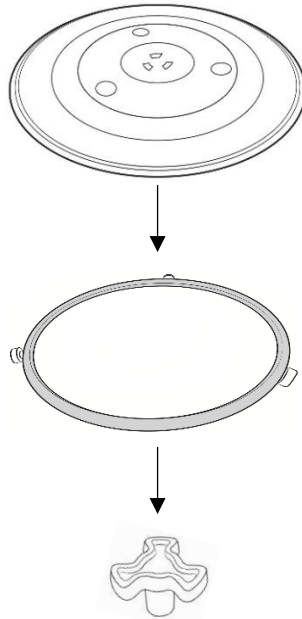


STEP 3) The glass turntable should align with the turntable coupling



TURNTABLE INSTALLATION

The glass turntable, turntable ring, and turntable coupling assembly must always be used during cooking (as shown below).

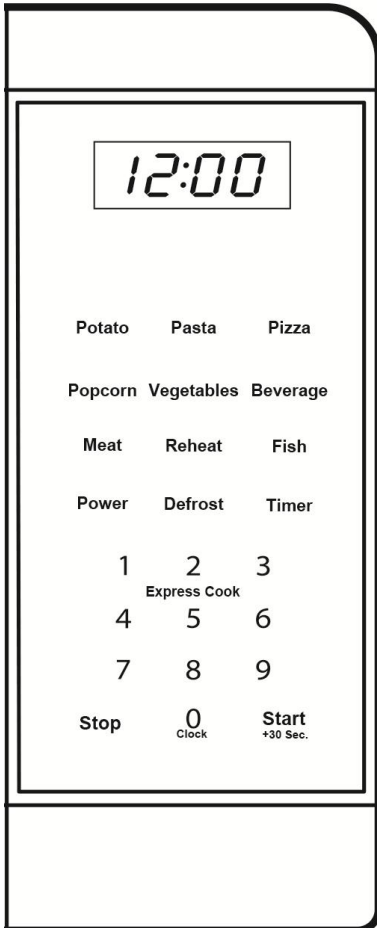


- Do not place the food directly onto the glass turntable, always place on or in suitable microwaveable cookware.

Please check that crockery is microwave safe before using.

- If the glass turntable or turntable ring assembly has been damaged in any way, please contact Customer Service team on **0345 209 7461**.

CONTROL PANEL



Screen Display

Cooking time, power, action indicators and clock time are displayed.

Auto cook menu pads

Press to select from 8 auto cook menus.

Reheat

Press this button and then input food weight (from 200g to 1000g).

Power

Press this button a number of times to set a cooking power level.

Defrost

Press this button once to defrost by weight and twice to defrost by time.

Timer

Press this button to set the timer.

Number pads

Press to set time or food weight.

Stop

Press to stop the cooking process.

Start/+30 Sec.

Press to start a cooking programme or simply press it a number of times to set a quick start cooking time.

HOW TO USE THE MICROWAVE

Setting the clock

This microwave displays time in the 24-hour format. The '**0/Clock**' button combines the '**0**' number key and the clock function.

To set the clock:

1. Make sure the oven is in standby mode.
2. Press and hold the '**0/Clock**' button for more than 3 seconds to enter clock setting mode.
3. Use the number keys (**0–9**) to enter the time directly.
4. Press the '**Start/+30s**' button to confirm and exit.



Note: Some functions, such as cooking and defrost, will be unavailable until the clock is set.

Microwave Cooking

Once the unit is installed, powered on and the clock is set, you are ready to cook.

Your microwave has 10 power levels, from 10% to 100% (full power). Most recipes use full power, which is usually stated on food packaging.

You can adjust power levels by pressing the '**Power**' button. The first press sets **100P**, the second **90P**, then **80P**, decreasing by intervals of 10% down to **10P**.

Follow these steps to cook with power levels:

1. Press the '**Power**' button until the desired power level is displayed.
2. Use the number pad to set the cooking time (up to 99 minutes 99 seconds).
3. Press '**Start/+30 Sec.**' to begin cooking.
4. When cooking is complete, '**End**' will appear on the display and 3 long beeps will sound every 2 minutes until the door is opened or '**Stop**' is pressed.



Note: Do not operate the oven when empty, as this can cause irreparable damage.

HOW TO USE THE MICROWAVE

Pausing cooking

- If you want to pause the cooking to turn over or stir contents, simply open the door, then close again and press the **'Start/+30 Sec.'** button to continue the cycle.
- If you wish to stop cooking with time left on the display, take out the contents, close the door and press the **'Stop'** button once to clear.
- When the cooking process has finished, **'End'** will be displayed, and 4 beeps will be heard every 2 minutes until the oven door is opened or the **'Stop'** button is pressed.

Express Cook

- In standby mode, press any number button from 1 to 6 to set a cooking time of 1 to 6 minutes. For example, press 1 for 1 minute or 3 for 3 minutes. Then press **'Start/+30 Sec.'** to begin cooking.
- Alternatively, place the food inside, close the door, and press **'Start/+30 Sec.'** to start cooking immediately. The default cooking time is 30 seconds. Each time you press **'Start/+30 Sec.'**, another 30 seconds is added. You can continue pressing until the total time reaches 99 minutes and 99 seconds.
- Cooking always runs at full power. A buzzer will sound when the cooking is complete.



Note: The Express Cook function does not work for defrosting or auto cook menus.

Reheat

1. Press the **'Reheat'** button. The display will show **'200g'**.
2. Press the **'Reheat'** button repeatedly to select the desired weight (between 200g and 800g).
3. Press **'Start/+30 Sec.'** to begin reheating.

When the programme ends, **'End'** will appear on the display, and 4 beeps will sound every 2 minutes until the oven door is opened or the **'Stop'** button is pressed.

HOW TO USE THE MICROWAVE

Defrost

The microwave generally penetrates 4cm into most foods. Therefore you must ensure food is thoroughly defrosted before starting the cooking process.

For even defrosting results, ensure you turn the food over during the cycle.

Defrosting generally takes longer than the cooking time of food.

Defrosted food should be consumed as soon as possible, do not put it back in the fridge or freeze again.

This microwave has two defrost mode settings by time and weight. Press the '**Defrost**' once, the display will show "0:00", keep pressing the number pads to set the required time. Press the '**Defrost**' twice, the display will show "0", keep pressing the number pads to set the required weight.

As an example, to defrost 400g of poultry:

1. Press the '**Defrost**' button twice and '**0**' will be displayed.
2. Press the number pads, 4, 0 and 0. The display will show '**400**'.
3. To commence defrosting, press the '**Start/+30 Sec.**' button.
4. Approximately two thirds of the way through the defrosting time, the oven will beep. This is to allow you to turn over the food for even defrosting. Turn over or rearrange the food and press the '**Start/+30 Sec.**' button to resume defrosting. To defrost fatty meat, defrost intermittently until defrosted. Ice should be removed at all times.
5. Please note: 'End' will be displayed and 4 beeps will be heard every 2 minutes until the oven door is opened or the '**Stop**' button is pressed.



Note: Ensure food is thoroughly defrosted before starting the cooking process.

HOW TO USE THE MICROWAVE

Child Lock

The child lock feature prevents unsupervised operation by children.

To set:

- In standby mode, press and hold '**Stop**' button for 4 seconds, then a beep will sound, and the display will show '**Loc**'. In Child Lock, all buttons are disabled.

To cancel:

- Press and hold '**Stop**' button for 4 seconds, then a beep will sound, and the lock will be deactivated.

Auto cook function

There are 8 auto cook menus you can use for easy cooking, automatically calculating the cooking time based on the type of food and weight.

To use the auto cook function:

1. Place the food in a container suitable for use with microwave ovens and put it into the oven.
2. Press the type of food you want to cook. The weight options will be displayed.
3. Keep pressing the pad until the desired food weight appears in the display.
4. Press the '**Start/+30 Sec.**' button. The auto cook function will now begin.
5. When the food has finished cooking, the oven will beep 4 times to let you know and the word '**End**' will be displayed.

HOW TO USE THE MICROWAVE

Auto cook menu

For guidelines on how to use the auto cook function, refer to the menu table below:

Display Setting	Food Type	Weight	Method
A.1	Potato	1 - 250g 2 - 500g 3 - 750g	To cook potato slices, cut into approx. 5mm width and length, to total weight of approx. 250g, 500g or 750g. Place the slices on a film covered dish to prevent water loss.
A.2	Pasta	1 - 50g 2 - 100g 3 - 150g	To cook pasta to total weight of approx. 50g, 100g or 150g.
A.3	Pizza	1 - 200g 2 - 400g	Warm 1-2 slices of fridge chilled pizza, each slice of pizza is approx. 200g
A.4	Popcorn	100g	For a bag of corn, if the corn decreases its popping speed to one pop every couple of seconds, press ' Stop/Lock ' button to stop.
A.5	Vegetables	1 - 200g 2 - 400g 3 - 600g	To cook vegetables to total weight of approx. 200g, 400g or 600g.
A.6	Beverage	1 - 250ml 2 - 500ml 3 - 750ml	Heat 1-3 cups of liquid, each cup of approx. 250ml liquid. Make sure to use a wide top cup.
A.7	Meat	1 - 200g 2 - 400g 3 - 600g	To cook meat to total weight of approx. 200g, 400g or 600g.
A.8	Fish	1 - 200g 2 - 400g 3 - 600g	To steam fish up to 600g. Wash and remove scales, and make slits in the skin. Put the fish on a shallow dish, season and cover with a thin layer of film to prevent water loss. Stand for 2 minutes once cooked.

HOW TO USE THE MICROWAVE

Express Cook

- In standby mode, press any number button from 1 to 6 to set a cooking time of 1 to 6 minutes. For example, press 1 for 1 minute or 3 for 3 minutes. Then press '**Start/+30 Sec.**' to begin cooking.
- Alternatively, place the food inside, close the door, and press '**Start/+30 Sec.**' to start cooking immediately. The default cooking time is 30 seconds. Each time you press '**Start/+30 Sec.**', another 30 seconds is added. You can continue pressing until the total time reaches 99 minutes and 99 seconds.
- Cooking always runs at full power. A buzzer will sound when the cooking is complete.

Utensil information

- Do not use metal pans or dishes with metal handles.
- Do not use anything with a metal trim.
- Do not use paper-covered wire twist-ties on plastic bags.
- Do not use melamine dishes as they contain a material which will absorb microwave energy. This may cause the dishes to crack or burn, and will slow down the cooking speed.
- Use only cookware that is approved to be used in a microwave oven.
- Do not cook using a container with a restricted opening, such as bottles, as they may explode.
- Do not heat baby bottles with the teat left on. Remove it if replacing the bottle back into the oven.
- Only use thermometers that are approved for microwave ovens.
- Do not use the microwave oven for heating utensils.

COOKING TIPS

Defrosting tips

Microwaves penetrate around 4cm into most food. To maximize defrosting effectiveness, follow the below guidelines:

1. For thick foods, turn regularly during operation in order to defrost evenly.
2. If food weighs over 500g, it is advised to turn at least 2 times.
3. Defrosted food should be consumed as soon as possible, it is not advisable to put back into the fridge or freeze again.

Cooking tips - The following may affect cooking results:

Food arrangement

If possible, thicker bits of food should be placed around the outside of the dish and the thinner parts toward the centre, spread out as evenly as possible. Do not overlap food if possible as this could result in uneven cooking results.

Cooking time

If you are unsure of cooking times it is advisable to start with a short cooking time and monitor cooking progress before adding further time. Overcooking could lead to a risk of fire. Ensure food is cooked thoroughly before consuming.

Cooking food evenly

Foods such as meat should be turned frequently to ensure more even cooking results. If the food is liquid based, stirring during the cooking time is advisable.

Allow standing time

When the microwave has stopped cooking, leave the food to rest for an adequate length of time to allow for cooking completion and cooling.

CLEANING THE MICROWAVE

- Before you clean the oven, **turn it off and unplug it.**
- Keep the inside of the oven clean. When food or liquids stick to the oven walls, wipe with a damp cloth. We recommend that you do not use harsh detergent or abrasives.
- On the right hand side wall of the cavity is the wave guide cover, microwaves are passed through this to enable your food to cook. It is important that this wave guide cover is kept clean at all times. To do this wipe with mild detergent and water, then dry.
- You should clean the outside of the oven with a damp cloth. **Do not allow water to seep into the ventilation openings.**
- **Do not allow the control panel to become wet.** Clean with a soft, damp cloth. Do not use detergents, abrasives or spray-on cleaners on the control panel.
- If steam builds up inside or around the outside of the oven door, wipe with a soft cloth. This may happen when the microwave oven is used in humid conditions.
- Regularly remove the glass turntable to clean it, and wash it in warm soapy water. Regularly clean the turntable support and oven floor. Simply wipe the bottom surface of the oven with mild detergent and water, then dry. You can wash the turntable support in mild soapy water.
- When removing the turntable support of the oven, make sure you put it back properly.
- If the inside of the oven smells, put a cup of water with the juice and skin of one lemon in a deep microwave bowl. Microwave it for three minutes, wipe thoroughly and then dry with a soft cloth.
- Failure to maintain the oven in a clean condition, especially if liquid is left under the turntable, could lead to deterioration of the surface that will adversely affect the life of the appliance that may result in a hazardous condition.

PROBLEM SOLVING



WARNING: To reduce the risk of personal injury, always unplug the microwave before performing maintenance or trouble shooting checks.

The microwave oven may cause interference to your radio, TV or similar equipment. If this happens, you can stop the interference by moving the radio, TV or equipment as far away from your microwave oven as possible.

Problem	Potential reason	Potential solution
Microwave doesn't work	1. Microwave is not plugged in	Make sure the plug is plugged in securely into the mains and the plug is switched on. If it is not, remove the plug from the socket, wait 10 seconds and plug it in again securely.
	2. Plug is not working	The plug socket that the microwave is plugged into may have become faulty. Plug the microwave into another known good plug socket, ensure that the socket is turned on and check if the microwave now works.
	3. The plug has a blown fuse or the mains circuit has a blown fuse/tripped fuse	Check the plug for a blown circuit fuse or a tripped main circuit breaker. If these seem to be working properly, test the socket with another appliance.
	4. Microwave has developed a fault	Contact customer services to talk through the problem to see if any solution for the fault can be found. If not and the product is within its warranty period, then the microwave should be returned to the retailer it was purchased from for a replacement or refund.
Microwave power doesn't work	1. Door is not closed	Make sure the door is securely closed. Otherwise, the microwave will not engage or operate.
	2. The power has not been set/the oven clock has not been set	Set the microwave power by pressing the 'Power' button. Set the time on the clock following the instructions in this guide.
Not heating	Magnetron not working	The component that produces the microwaves is called a magnetron, if food is not being heated or is lukewarm then it is likely this component has developed a fault. If the microwave is within its warranty period, please contact customer services for further advice or take the microwave back to the retailer it was purchased from for a refund or replacement.

PROBLEM SOLVING

Problem	Potential reason	Potential solution
Sparking	1. Burnt on food debris	<p>Spillages or splashes can burn and catch fire, all food that is put into the microwave should be appropriately covered. All spillages or splashes must be cleaned, and all areas of microwave cleaned after each use.</p> <p>Burnt on food debris in the microwave, on the waveguide and the behind the waveguide can cause the microwave to 'spark'. This is because burnt on debris can be focused on by the microwaves and spark.</p> <p>Microwaves must be thoroughly cleaned after every use to ensure no food is burnt on to any part of the microwave.</p>
	2. Metal or foil	<p>No metal or foil should be put inside a microwave as it can cause 'sparking' which can damage the microwave.</p> <p>The only metal accessories that should be used inside the microwave are the ones supplied by the manufacturer.</p>
	3. Pressure build up in food	<p>Food with non-porous skins (e.g., potatoes) must be pierced to allow steam to escape. The build up of pressure can cause food to burst and create a fire hazard.</p>
Heat spots	Operated empty or with no moisture	<p>Microwaves need moisture to operate correctly and can't be run if the cavity is empty.</p> <p>If microwaves are operated empty or are used to heat up plates (this is not permitted), the microwaves can focus on a single point inside the microwave. This can cause a heat spot, which can cause the area to become deformed, warped or start to melt.</p> <p>If microwaves are operated empty or to heat up foreign objects, this will void the warranty.</p>
Door not shutting/ locking	Latches have become deformed	<p>If the microwave is within its warranty period, please contact customer services for further advice or take the microwave back to the retailer it was purchased from for a refund or replacement.</p>

PROBLEM SOLVING

Problem	Potential reason	Potential solution
Condensation or excess water	1. Food that is being cooked	By the very nature of how a microwave works, it 'excites' the water molecules in the food it is heating, causing them to move about and generate heat from within the food. Often, when the food heats up, it reaches the point where steam is released. Dependent on the food type being heated (and its water content level), the length of time being heated for – and so the amount of steam generated – it is inevitable that some of the steam will condense and form back into water droplets within the microwave cavity. This can usually be found on the inner walls or most commonly, on the back of the glass door. If not cleaned up, these droplets can start to form small 'pools' of water.
	2. Cooling vents covered	Cooling vents allow the heat and steam to escape from the microwave. These cannot be covered as it can cause excessive water to settle inside the microwave or the microwave to overheat. The installation instructions in the instruction manual must be followed or the warranty will be void.
Paint damage/peeling	Maintenance	If the microwave is within its warranty period, please contact customer services for further advice or take the microwave back to the retailer it was purchased from for a refund or replacement.
Light not working	Bulb not working	Due to the construction of microwaves and certain 'dangerous' components inside, the light bulb can only be changed by a qualified service engineer. If the microwave is within its warranty period, please contact customer services for further advice or take the microwave back to the retailer it was purchased from for a refund or replacement.
Over heating	Cooling vents covered	Cooling vents allow the heat and steam to escape from the microwave. They cannot be covered as it can cause excessive water to settle inside the microwave or the microwave to overheat. The installation instructions in the manual must be followed or the warranty will be void.
Too noisy	1. Glass turntable fitted incorrectly	Check that the glass turntable has been placed correctly on the turntable and is not hitting the walls/doors of the microwave during operation.
	2. Dishes/plate are too large for the microwave	Check that the dishes/plates are the correct size for the microwave and that they are not hitting the walls/door of microwave during operation.

PROBLEM SOLVING

Problem	Potential reason	Potential solution
Door not shutting/locking	1. Glass turntable fitted incorrectly	Check that the glass turntable has been placed correctly on the turntable and is not stopping the door from shutting correctly.
	2. Latches have become deformed	If the microwave is within its warranty period, please contact customer services for further advice or take the microwave back to the retailer it was purchased from for a refund or replacement.
Turntable not rotating	1. Turntable coupling not fitted or tape not removed	Check that the turntable coupling is fitted correctly and the transportation tape has been removed.
	2. Turntable roller ring not fitted or fitted incorrectly	Check that the coupling has been placed under the turntable and that it is in position correctly.
	3. Glass turntable fitted incorrectly	Check that the glass turntable has been placed correctly on the turntable.
	4. Turntable has developed a fault	If the microwave is within its warranty period, please contact customer services for further advice or take the microwave back to the retailer it was purchased from for a refund or replacement.

GUARANTEE AND CUSTOMER SERVICES

This product is guaranteed for **12 months** from the date of the original purchase. If any defect arises due to faulty materials or workmanship, the faulty product must be returned to the place of purchase. Refund or replacement is at the discretion of the retailer.

The following conditions apply:

- The product must be returned to the retailer with the original proof of purchase.
- The product must be installed and used in accordance with the instructions contained in this instruction guide and any other instructions for use which are supplied.
- It must be used for domestic purposes only and for its intended use.
- This warranty does not cover wear and tear, damage, misuse or consumable parts.

This does not affect your statutory rights.

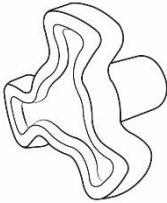
Customer Services and Spare Parts:

Region	Contact
UK & Northern Ireland	0345 209 7461
Ireland	1 700 938982
Rest of Europe	europa@productcaregroup.com

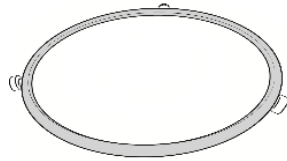
SPARE PARTS

To check the availability of the following spare parts, simply contact our friendly Customer Service team.

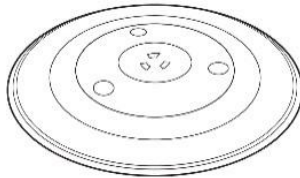
Turntable coupling



Turntable ring



Glass turntable



CONNECTION TO THE MAINS SUPPLY

WARNING- THIS APPLIANCE MUST BE EARTHED

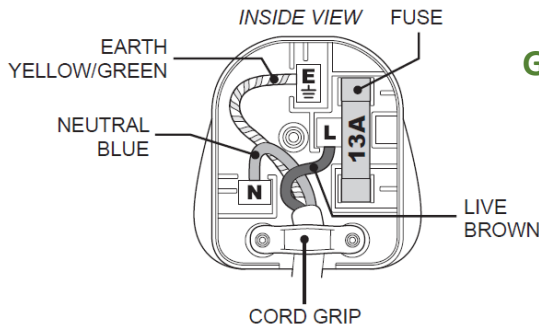
This appliance is designed to operate from a mains supply of
220-240V~ 50Hz.

Check that the voltage marked on the product corresponds with
your supply voltage.

This product is fitted with a moulded 13A plug complying with
BS1363. If this plug is unsuitable or needs to be replaced, refer to
customer services as it should only be replaced by a qualified
engineer.

To replace the 13amp fuse, remove the plug from the socket,
remove the fuse cover near the pins of the plug, remove the fuse
and replace with 13amp fuse. Refit the fuse cover and plug the
unit back into the power supply.

Important: The wires in the mains lead are coloured in
accordance with the following code:



GREEN/YELLOW – EARTH

BLUE – NEUTRAL

BROWN – LIVE

CONNECTION TO THE MAINS SUPPLY

For UK use only – PLUG

- As the colours of the wires in the mains lead of this appliance may not correspond with the coloured markings identifying the terminals in your plug, proceed as follows:
- The **GREEN/YELLOW** wire is the EARTH and must be connected to the terminal which is marked with the letter E or by the earth symbol or coloured **GREEN** or **GREEN/YELLOW**.
- The **BLUE** wire is the NEUTRAL and must be connected to the terminal marked with the letter N or coloured **BLACK**.
- The **BROWN** wire is the LIVE wire and must be connected to the terminal marked with the letter L or coloured **RED**.
- **Always ensure that the plug cord grip is fastened correctly.**
- If a 13A (BS1363) fused plug is used it must be fitted with a 13amp fuse conforming to BS1362 and be BSI or ASTA approved.

If the fuse cover is lost the plug must not be used until a replacement is obtained from an electrical supplier.

If you need to remove the plug, cut it from the mains lead and dispose of it. NEVER attempt to re-use this plug or insert it into a socket outlet, as there is a very great risk of electrical shock.

Note

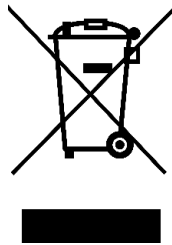
A large, empty rounded rectangular box with a green border, intended for taking notes. The box is centered on the page and occupies most of the vertical space below the 'Note' header.

abode

Made by Product Care Trading Limited. Product Care Trading Ltd, Unit 1, Green Bank Business Park, Swan Lane, Hindley Green, Wigan, WN2 4AY, United Kingdom/Product Care (Ireland) Ltd, Unit 3D North Point House, North Point Business Park, New Mallow Road, Cork, T23 AT2P, Ireland.

UK
CA

C
E



The 'wheellie bin' symbol is known as the 'Crossed-out wheellie bin Symbol'. When this symbol is marked on a product/batteries, it means that the product/batteries should not be disposed of with your general household waste. Only discard electrical/electronic/battery items in separate collection schemes, which cater for the recovery and recycling of materials contained within. Your co-operation is vital to ensure the success of these schemes and for the protection of the environment. For your nearest disposal facility, visit www.recycleyourelectricals.org.uk or ask in store for details.

SEDEX – Connecting businesses and their global suppliers to share ethical data and enabling improvement in ethical performance. Visit www.sedex.org.uk for further information.

We reserve the right, due to possible changes to design, to alter the instruction manual without prior notice.