

Central Brass Company, Inc.
3325 S. Garfield Ave.
Commerce, CA 90040
(800) 321-8630
www.centralbrass.com

Tools:



Adjustable Wrench



Plumbers Putty



Teflon Tape



Rags



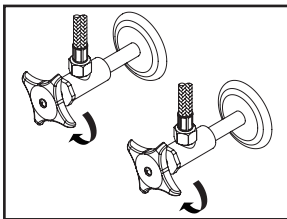
Model Number: 1177, 1178, 1179 Series

Warnings and Notes:

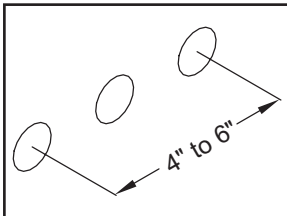
Check with local plumbing code requirements before installation.
This product should be installed by a local listed plumber.
Do not use plumbers putty on threads.

Installation Steps:

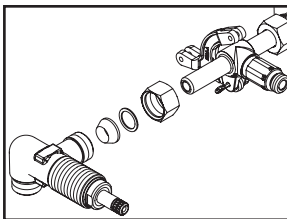
Two Handle Wall Mount Faucet



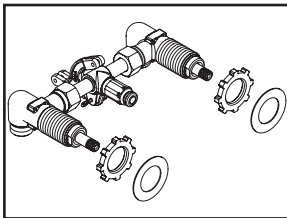
(1) Shut off water supplies. Remove old faucet. Clean mounting surface in preparation for new faucet.



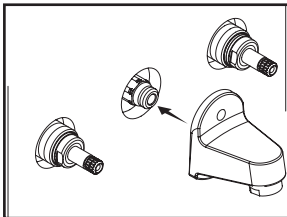
(2) Measure installation distance. This faucet can be installed on center to center distance from 4" to 6". For 4" centers installation cut off 3/8" from each end of center tee



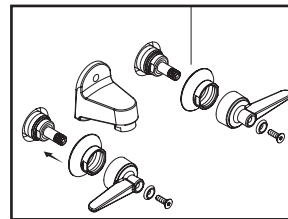
(3) Assemble cold valve body. Place coupling nut, brass washer and rubber cone washer with larger end towards the center tee. Tighten the coupling nut to cold valve body. Install rocker arm to center tee with the help of cotter pin. Install hot valve body same way.



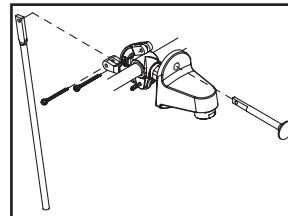
(4) Install locknuts down full length of each valve body. Place gaskets on valve bodies.



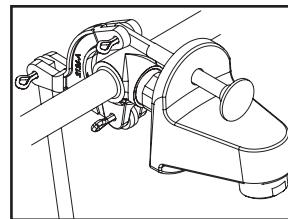
(5) Slide the assembly through mounting holes. Apply plumbers putty to the back of the spout. Thread spout to the center tee. Ensure o-ring does not get nicked.



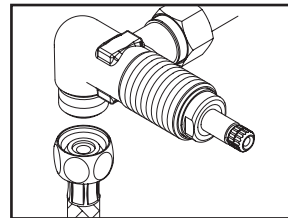
(6) Apply plumbers putty underneath of escutcheons. Thread escutcheons on to the valve bodies with the help of screws. Adjust locknut of both sides from the back of mounting hole to fix the valve bodies on the mounting surface



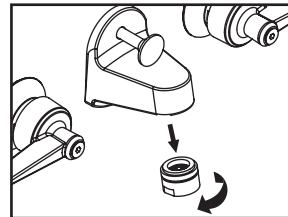
(7) Install Pop-up Rod and lower pull rod to the rocker arm with the help of cotter pins



(8) Check when pop-up rod is pulled the lower pull rod moves properly.

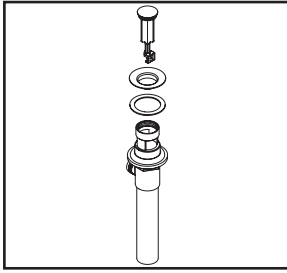


(9) When using stainless steel braided faucet supply hose; this faucet requires one end of the supply hose to have a 1/2" female IPS connection. The other end of this supply hose must match the thread on the water supply valve under your sink. Once you've identified the required size, carefully follow the manufacturer's installation instructions for each hose.

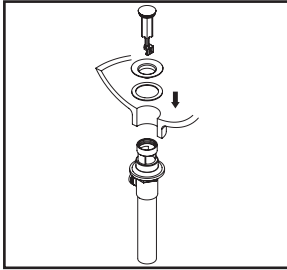


(10) Important: After installation is complete, remove the aerator. Turn on the water and allow both hot and cold water to run for at least one minute each. While water is running, check for leaks. Turn off the water and replace the aerator when finished.

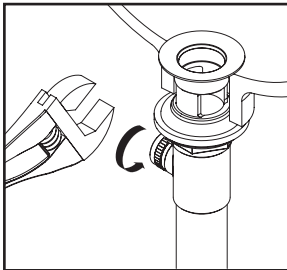
Pop-up Drain Installation:



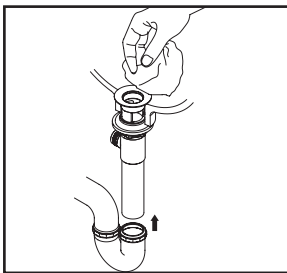
(1) Remove pop-up flange from body



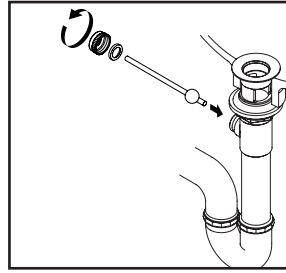
(2) Place a ring of plumbers putty on the bottom of flange.



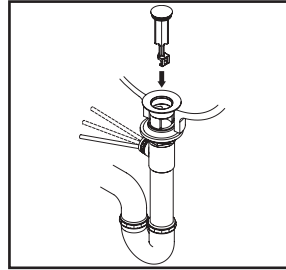
(3) Insert pop-up flange through drain hole and attach flange to the pop-up drain body. Apply Teflon tape on the threaded end of the tail piece and attach tail piece to the pop-up drain body. Ensure the pivot rod hole of the pop-up drain body faces towards the back of the sink. Tighten the locknut with the help of a wrench to secure the pop-up drain body.



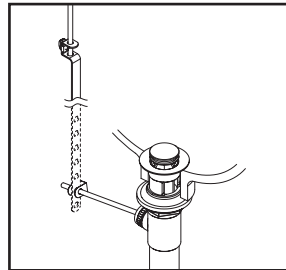
(4) Remove the excess plumbers putty. Connect the trap (check manufacturer's instructions for installation).



(5) Remove pivot rod nut from pop-up body, ensure the washers is in place, insert pivot rod, tighten pivot rod nut back to pop-up body.



(6) Push pivot rod down, insert drain plug carefully. Test to ensure drain plug works properly.



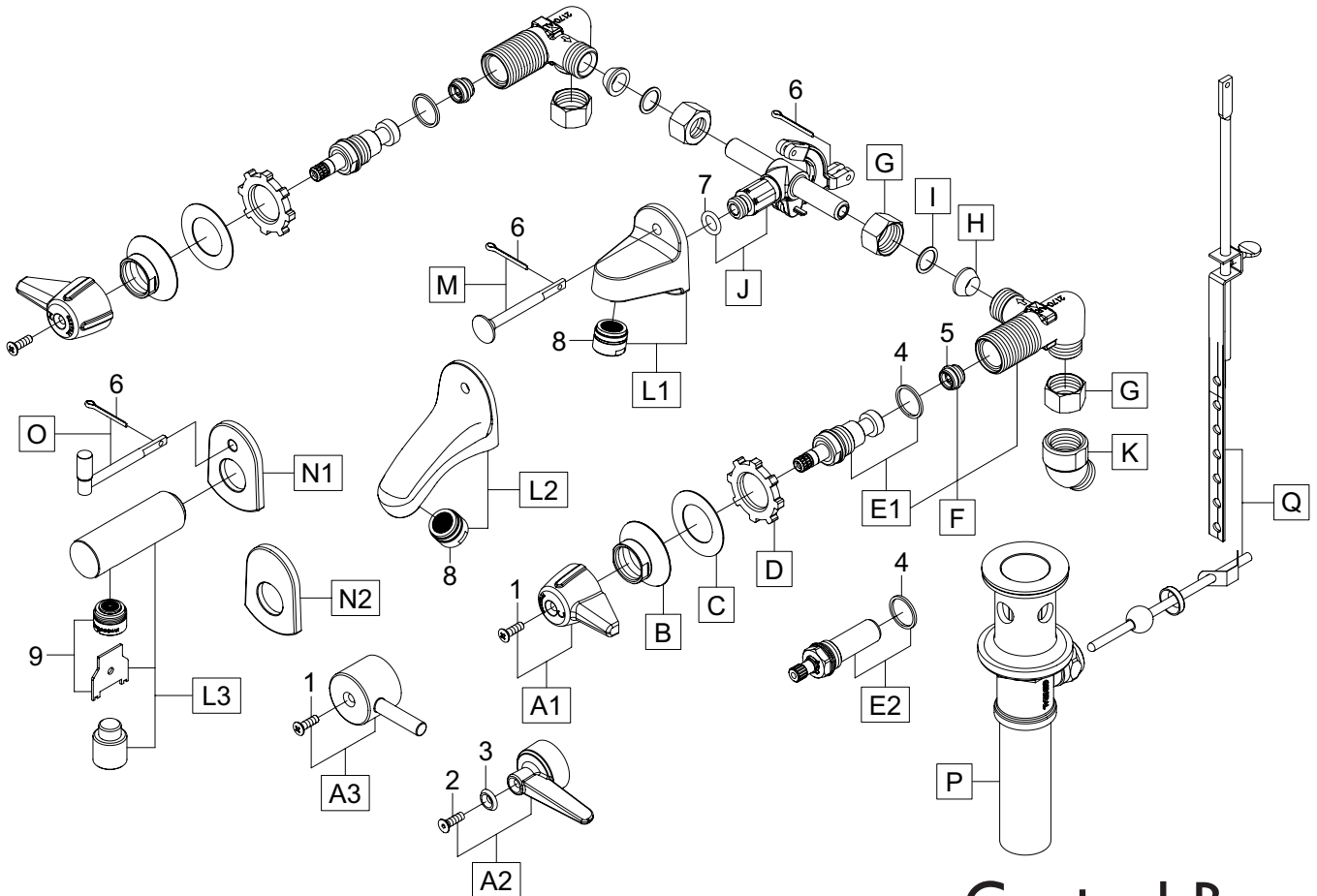
(7) Connect lift rod strap to pivot rod by using clip. Tighten the thumbscrew to connect lift rod strap to pop-up lift rod.

Exploded Drawing:

* Note: Please specify finish/color when ordering.

	ITEM #	DESCRIPTION
A1	G-523-C, H	Canopy Handle-C, H
A2	CS-19007C, H	Lever Handle-C, H
A3	CS-19009	Lever Handle
B	510*	Escutcheon
C	X491-U	Gasket (12 pk)
D	X53-AZ	Locknut (6 pk)
E1	G-458-KR, KL	Stem Assembly-C, H
E2	CS-33002C, H	Ceramic Disc Cartridges-C, H
F	U-2170-AR, AL	Corner Valve Body-C, H
G	X4015	Coupling Nut (4 pk)
H	X954-A	Rubber Washer (10 pk)
I	X22	Brass Washer (6 pk)
J	U-2171-A	Center Tee with Rocker Arm
K	2172	Elbow
L1	SU-511-A	Shelf Back Spout With Aerator (For 1177 Series)
L2	SU-2136-FA	To Shelf Back Spout With Aerator (For 1178 Series)
L3	CS-23003	Spout With Aerator (For 1179 Series)

	ITEM #	DESCRIPTION
M	G21	Pop-Up Rod & Cotter Pin (For 1177/1178 Series)
N1	CS-46003	Plate (For 1179, 1179-D)
N2	CS-46004	Plate (For 1179-NH)
O	CS-46005	Pop-Up Rod & Cotter Pin (For 1179 Series)
P	SU-1109	Pop-up Drain less pull rod & bracket (For "-D" Suffix)
Q	G-195-EBST	Lower Pull Rod Group W/ Ball Lever Rod (For "-D" Suffix)
1	X107-F	Handle Screw (25 pk)
2	CS-49033	Handle Screw
3	X107-FB, FR	Index Blue, Red (5 pk)
4	X193-LBN	Gasket (25 pk)
5	XPF-263-B	Replacement Seat (4 pk)
6	X194	Cotter Pin (6 pk)
7	X1038-IN	O-Ring (10 pk)
8	OP-490063	1.5 GPM Aerator
9	OP-490062*	Vandal Proof 1.5 GPM Aerator With Key (For 1179 Series)



Central Brass
COMPANY, Inc.

For more care information or trouble shooting inquiries about your Central Brass product, please call:
Central Brass Company, Inc. (800) 321-8630
 Monday-Friday 8 AM to 8 PM EST (5 AM to 5 PM PST)
www.centralbrass.com
 Feb. 13. 25