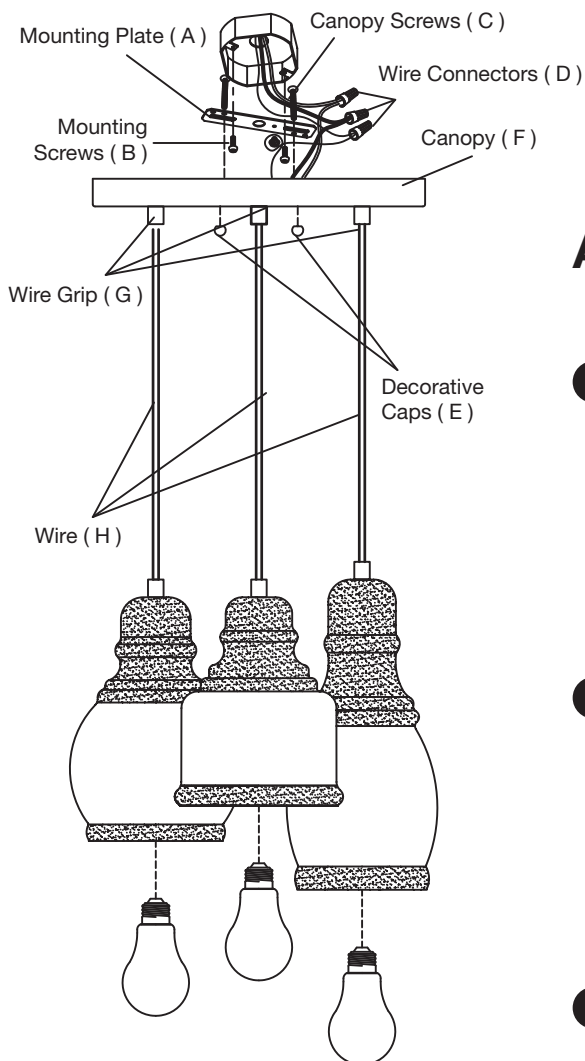


IMPORTANT SAFETY INSTRUCTIONS

- To avoid injury or damage, mount only on a surface that is sturdy.
- To avoid electric shock, make sure electricity is turned off at the main circuit breaker panel. If you are replacing an existing fixture, turn off the following in order: fixture, wall switch, and main fuse or breaker box. Note: Some types of fuses must be unscrewed to shut the power off.

*** Connect the ground wire (bare copper or green) from your fixture to the ground wire (copper or green) or ground screw in the electrical outlet box.**

Unpack the Fixture: Check the contents of the box. Box should contain all items below.



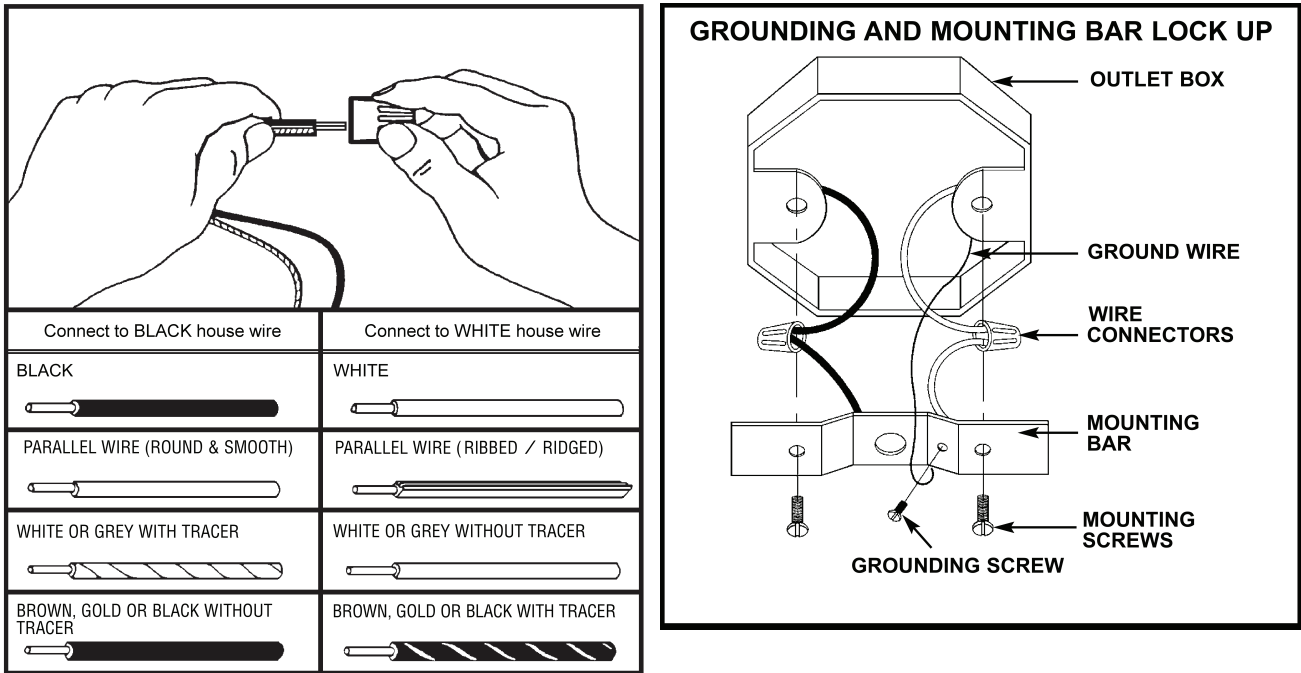
Highly Recommended

- Revel 6.5W LED Bulb

ASSEMBLY:

- 1 Secure Mounting Plate (A) to junction box using Mounting Screws (B) provided. The Mounting Plate (A) should be positioned with Canopy Screws (C) pointing away from junction box.
- 2 Adjust Wires (H) to the desired hanging length and secure in place with Wire Grip (G). Remove any excess wire, leaving approximately 10 inches beyond desired hanging length.
- 3 Place Canopy (F) against the ceiling by inserting Canopy Screws (C) through the appropriate holes located on Canopy (F). Adjust Canopy Screws (C) and hex nuts until 1/4" of the threaded portion is visible. Remove Canopy (F) once the Canopy Screws (C) have been adjusted.

- 4 Using the wire graph below, connect the appropriate fixture wires with Wire Connectors (D) provided. Place all wires and connectors back into the junction box.



- 5 Place Canopy (F) against the ceiling and secure it in place using Decorative Caps (E).

- 6 Install light bulbs (Not Included).

Enjoy your new fixture!