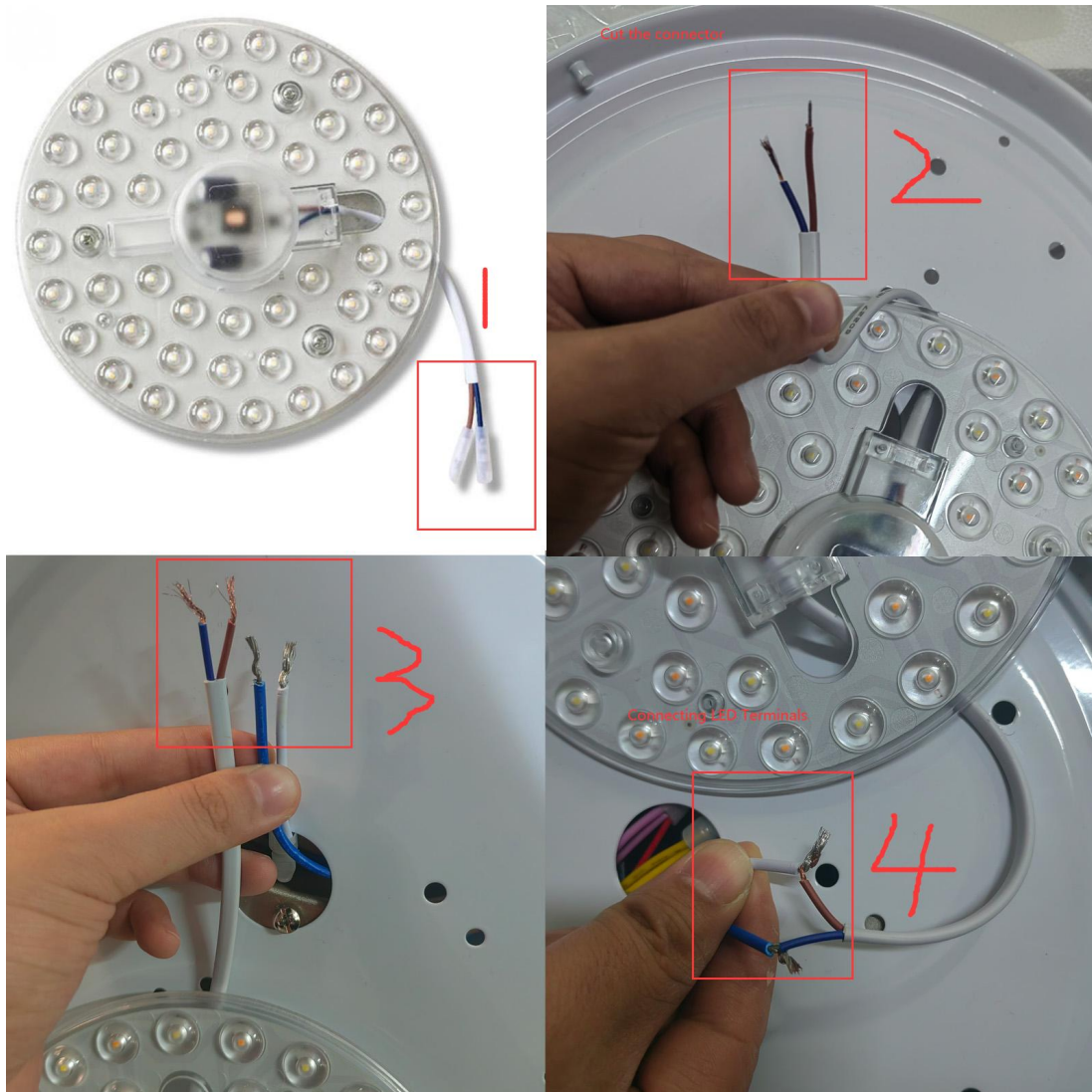


Common Problems and Solutions of Ceiling Fans

1. Lights don't work
2. Fan blade don't work
3. Fan and light don't work
4. Noise when turning on the fan
5. The ceiling fan shakes when turning on the fan

1. Lights don't work

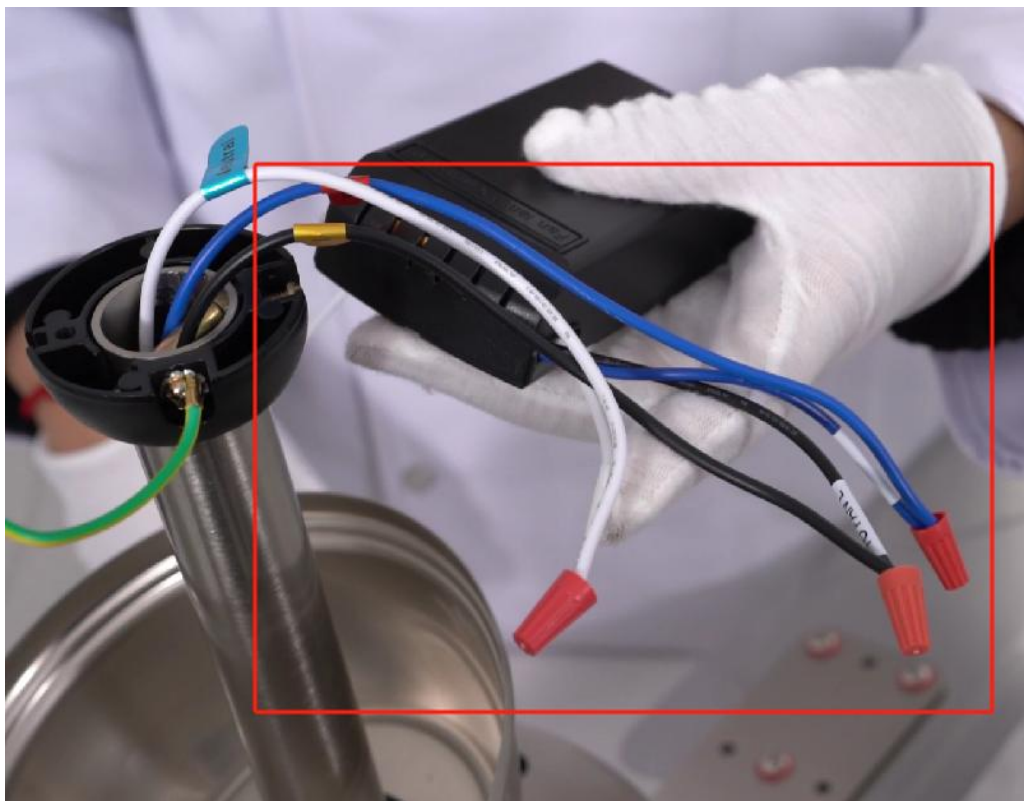
(1) Check that the LED light is wired correctly.



(2) If the LED light does not work even if you follow the correct wiring method, it may be because the LED light is faulty. You can contact wayfair for a free replacement LED light.

2. Fan blade don't work

(1) Turn off the power and check the receiver wiring with the two black wires connected together and the two blue wires connected together. If the wiring is normal and the ceiling fan is still not working, the receiver is faulty and you can contact wayfair for a free replacement receiver.

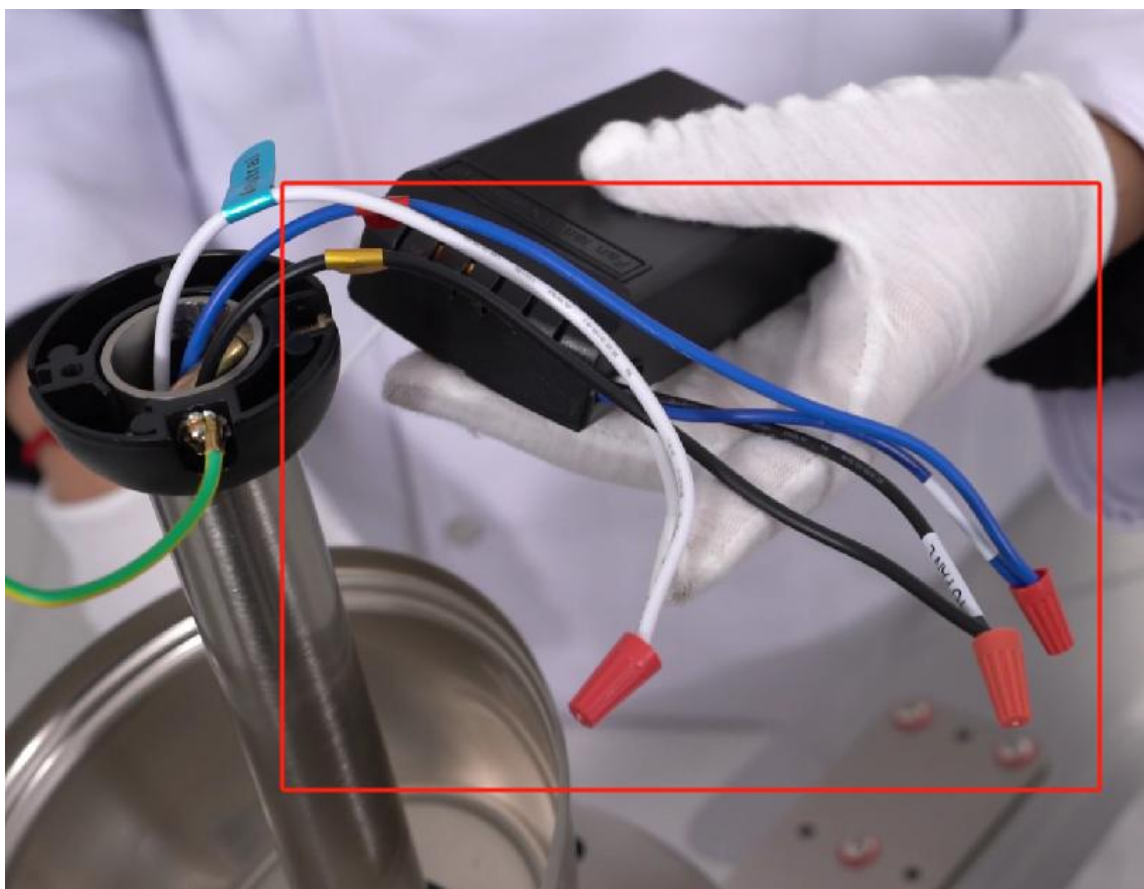


(2) If there is a wall control (lamp and fan sub-control), check that the light and fan switches are connected correctly.

(3) After eliminating the above possibilities, if the fault still exists, it is very likely that the motor fuse is blown, you can contact wayfair for replacement unit.

3. Fan and light don't work

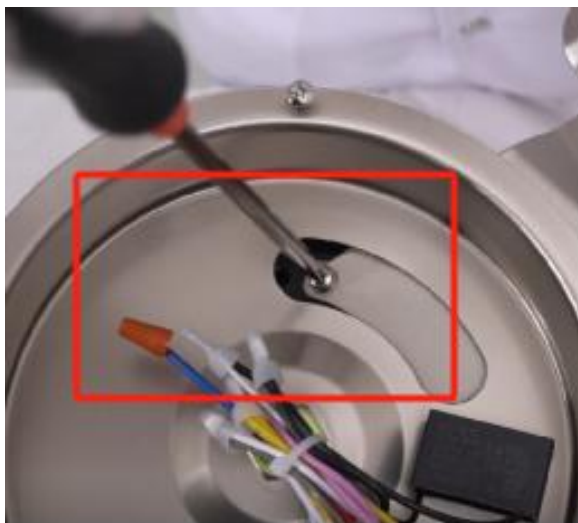
Turn off the power and check the receiver wiring with the two black wires connected together and the two blue wires connected together. If the wiring is normal and the ceiling fan is still not working, the receiver is faulty and you can contact wayfair for a free replacement receiver.



(3) After eliminating the above possibilities, if the fault still exists, it is very likely that the motor fuse is blown, you can contact wayfair for replacement unit.

4. Noise when turning on the fan

(1) Check to see if the screw on the fan blade is loose. If so, just tighten it up.



(2) Check that the lampshade is not twisted, loose or has a gap. If so, remove the lampshade and reinstall it correctly.

(3) Check if the suction magnet of the LED light is loose, loose will make noise. If there is a problem with the LED light's suction magnet, you can contact wayfair for a free replacement LED light.

5. The ceiling fan shakes when turning on the fan

(1) Check the installation environment. Ceilings must be concrete or wood with a load capacity of 20lb and a thickness of 3.9 inches. Gypsum ceilings and wood ceilings with a load capacity of less than 20lb are not permitted to install fan lights directly, and are to be reinforced with hangers.

(2) Check that the hangers are installed correctly and securely.

(3) Check that the connector screws where the boom attaches to the main unit are tight. There are two screws, both of which need to be tightened evenly.

