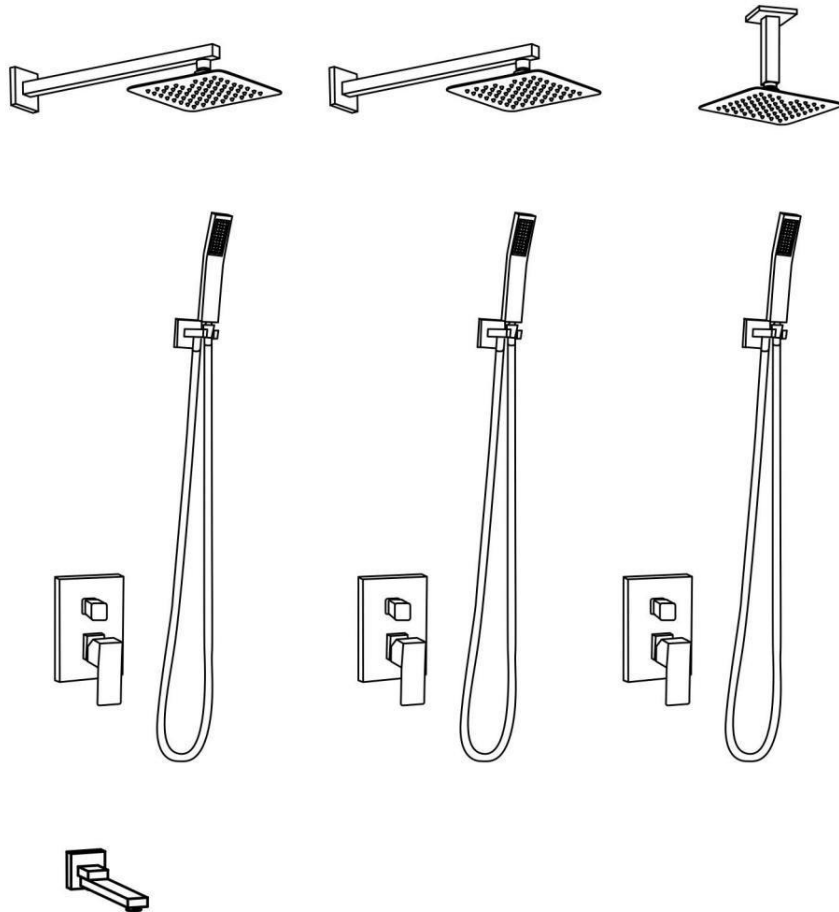


Installation Manual

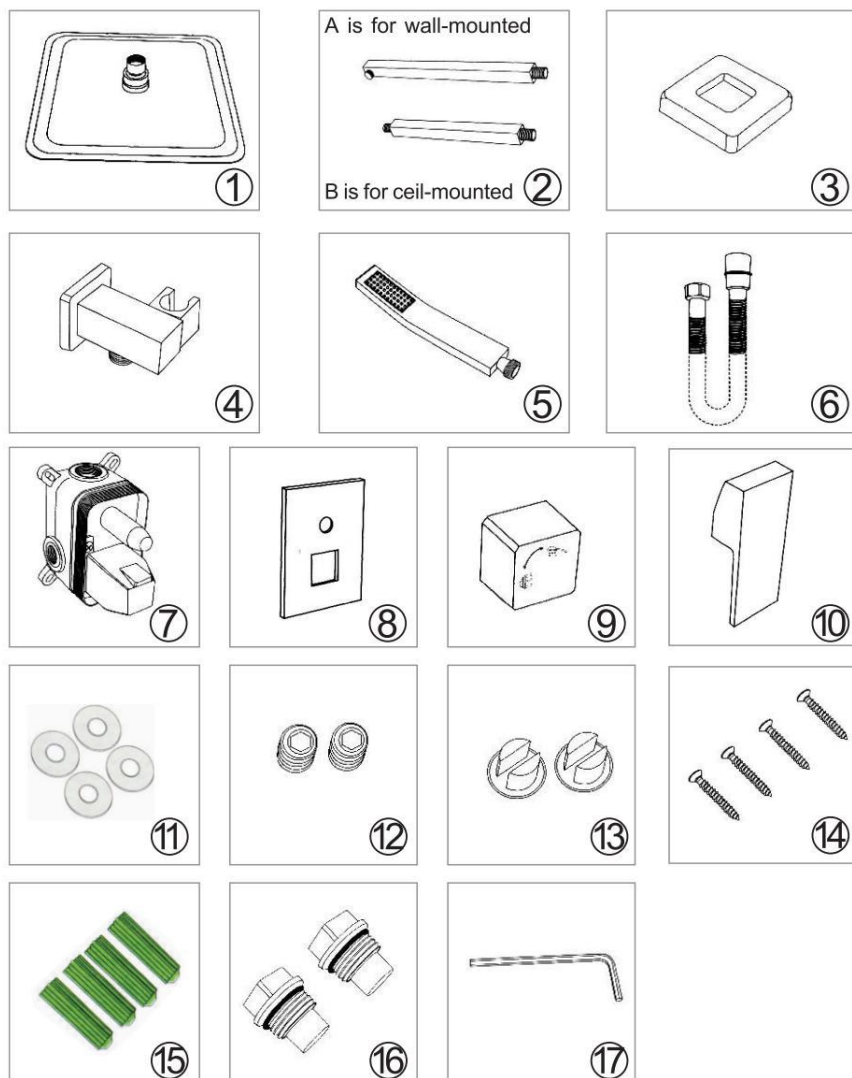


Applicable to Dual and three functions shower faucet

INDEX

1. UPC Certificate	02-04
2. How to Install A Shower System Faucet	05-18
(For Dual and Three fuctions)	
3. Warranty	19
4. Product Cleaning and Maintenance	20
5. Guide for Shower System	21

Package list of Two Functions shower



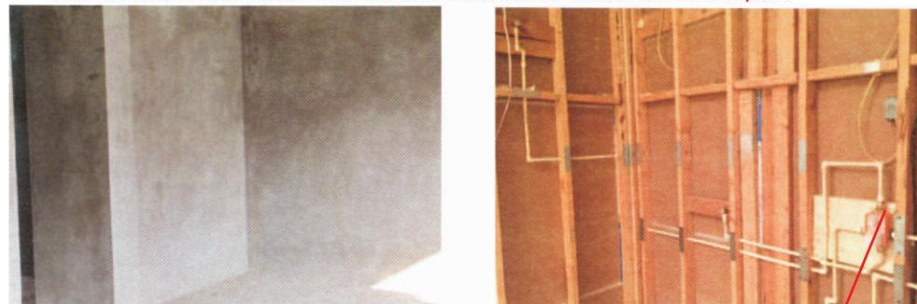
WARNING: Choking hazard. Please keep all small parts and plastic bags out of the reach of children.

Package list of Three Functions shower



WARNING: Choking hazard. Please keep all small parts and plastic bags out of the reach of children.

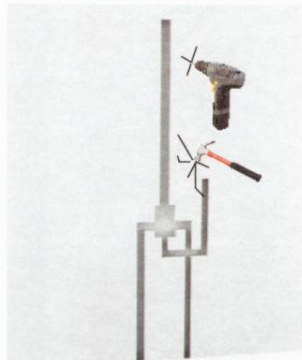
Step 1: Structure the model and water ways
 (The depth is for reference only, please according to the actual thickness of tiles to decide the installation depth)



(Concrete wall)

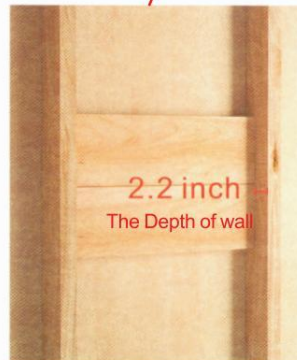
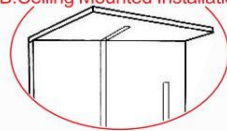
(Wood wall)

A: Wall Mounted Installation



Design water pipe slot

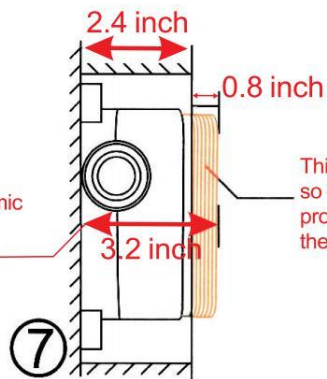
B: Ceiling Mounted Installation



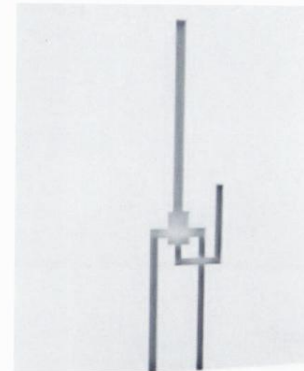
Design water pipe slot

Recommend using copper drop ear pipe elbow (1/2"-14 NPT)

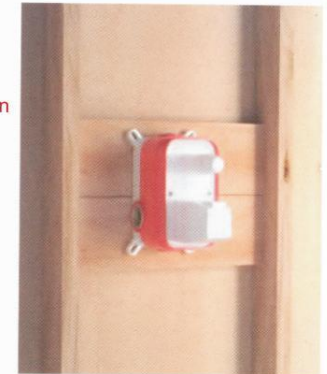
Including the thickness of ceramic tile is less than or equal to the thickness of valve (3.2 inches), so the thickness of tile must be calculated before installation.



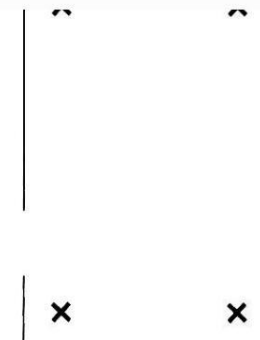
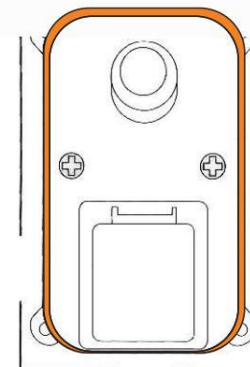
This part can be cut, so don't worry about the prominent edge after sealing the wall.

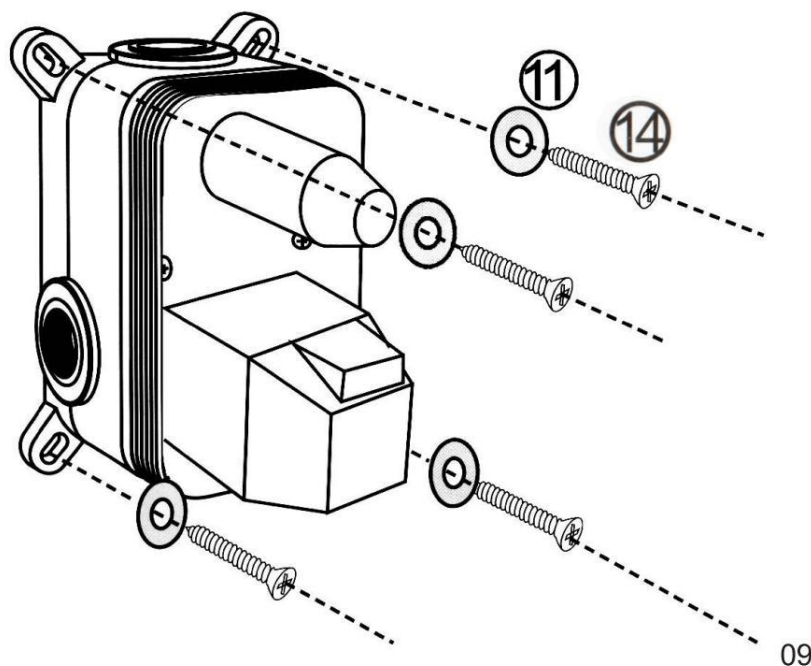
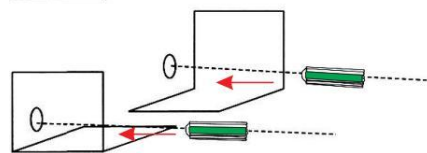
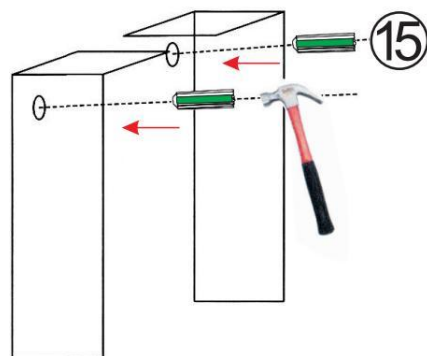
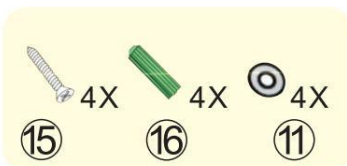


B: Ceiling Mounted Installation



⑦



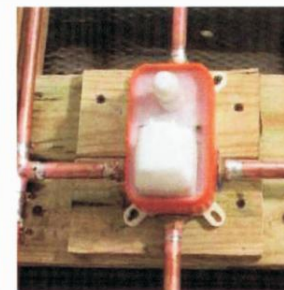


09

Step 2. Please clean the pipes of avoid any blockage before connecting to the supply water (Be suitable for Pex pipe, Copper pipe and PVC pipe)



Pex pipe



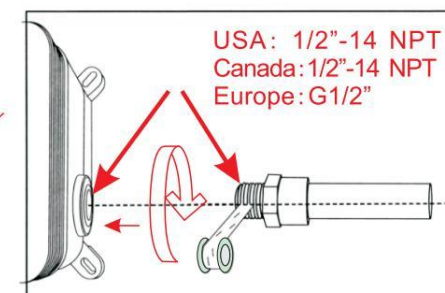
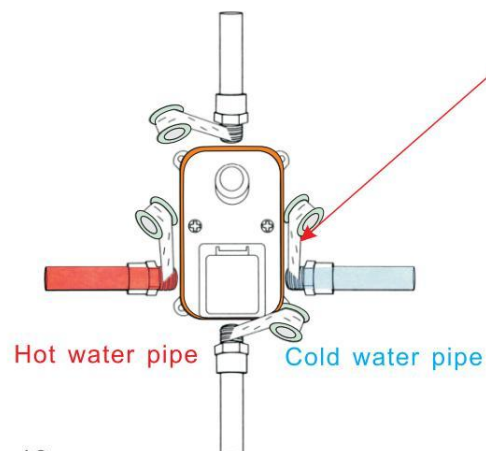
Copper pipe



Pvc pipe



Wrap enough teflon tape

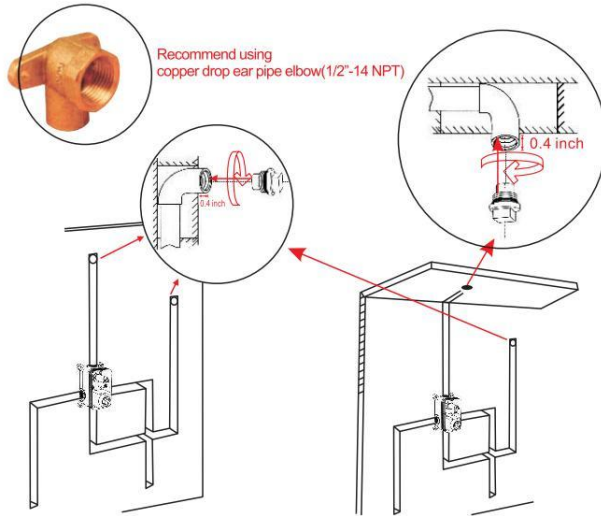


10

16

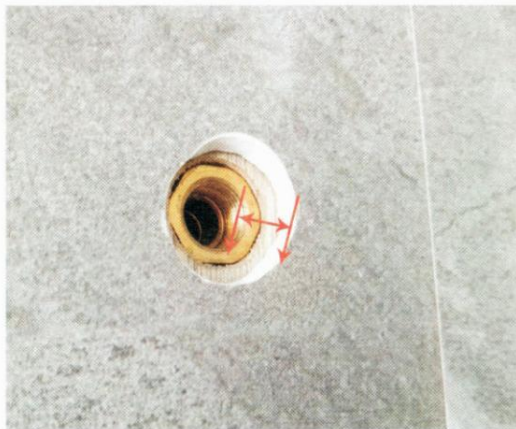


Wall Mounted /Ceiling Mounted Installation Before Tiling



Reserved dimensions of brass fittings to tiles after tiling

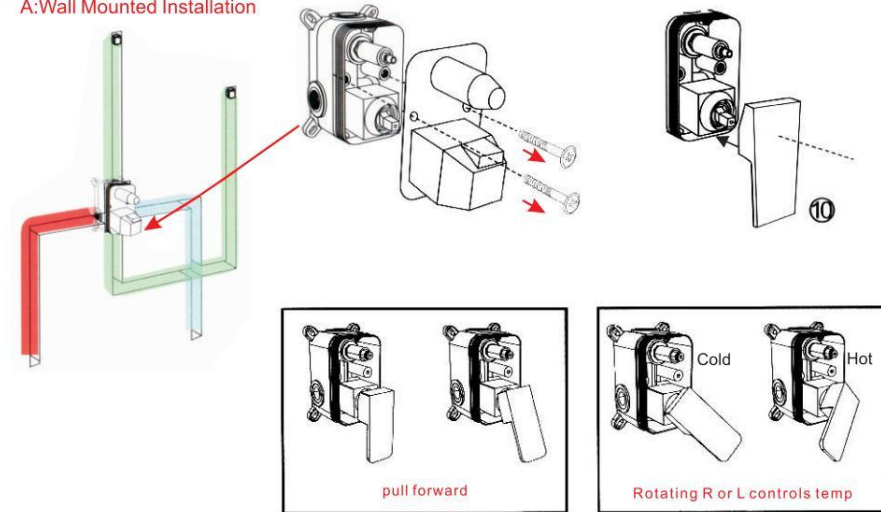
The shower arm is about 0.2 inches.
The shower bracket is about 0.4 inches.



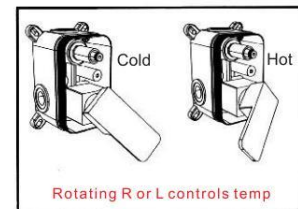
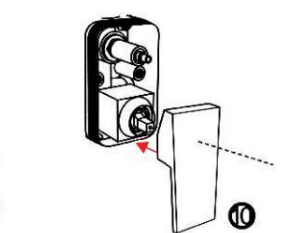
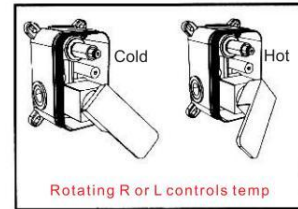
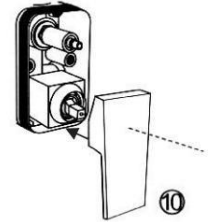
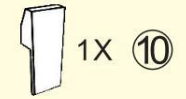
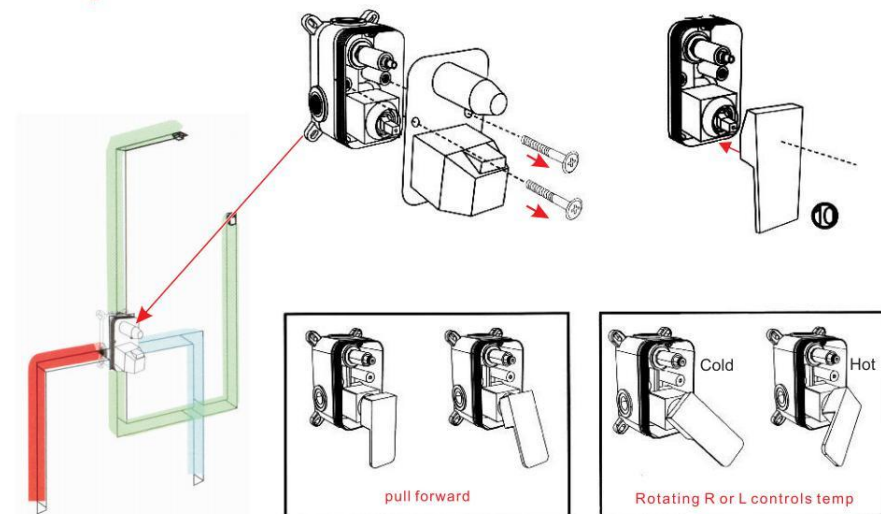
Step 3 :Check for leakage and/or blockage on both hot and cold water supplies.

(Shower valve must be connected with hot and cold water pipe.If only connect one,there is no water comes out)

A:Wall Mounted Installation



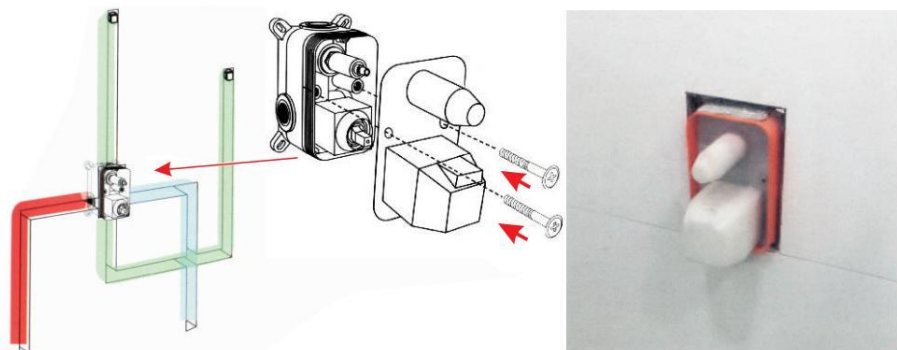
B:Ceiling Mounted Installation



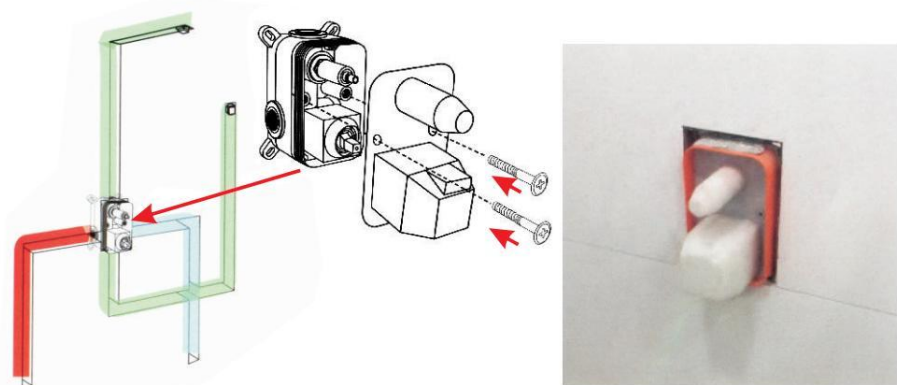
Step 4 : Tiles

(If you tile too thick, there is no enough space to install plate⑧, knob⑨ and handle⑩)

A:Wall Mounted Installation

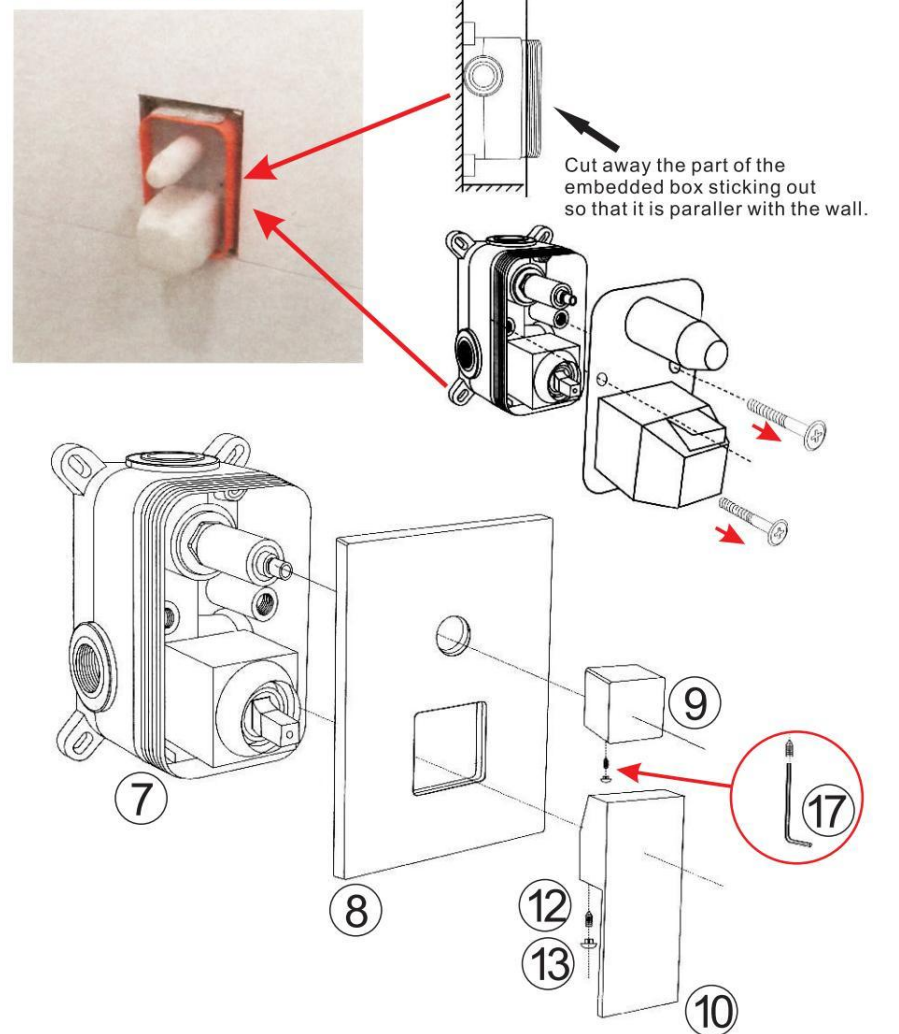


B:Ceiling Mounted Installation



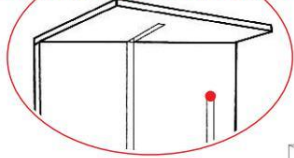
B:Ceiling Mounted Installation

A:Wall Mounted Installation

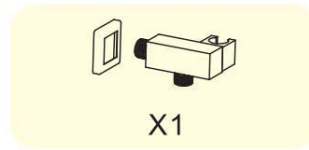
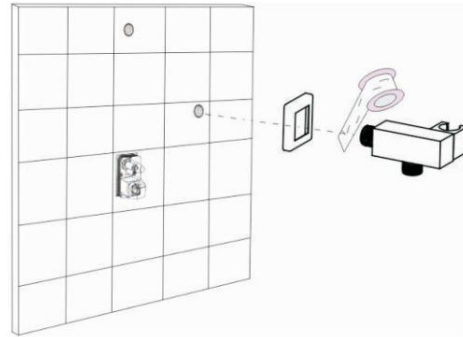


Step 5 :Install Shower bracket

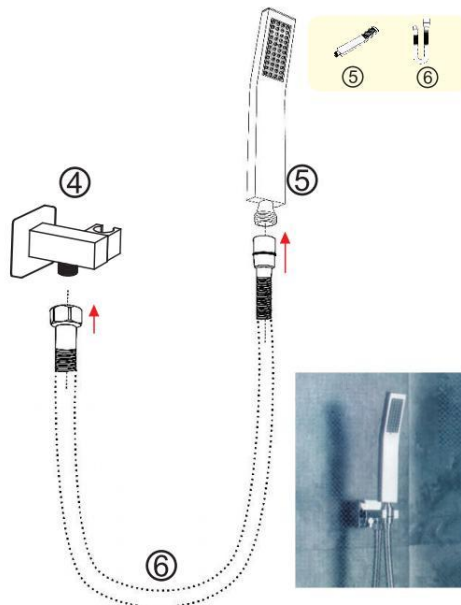
B:Ceiling Mounted Installation



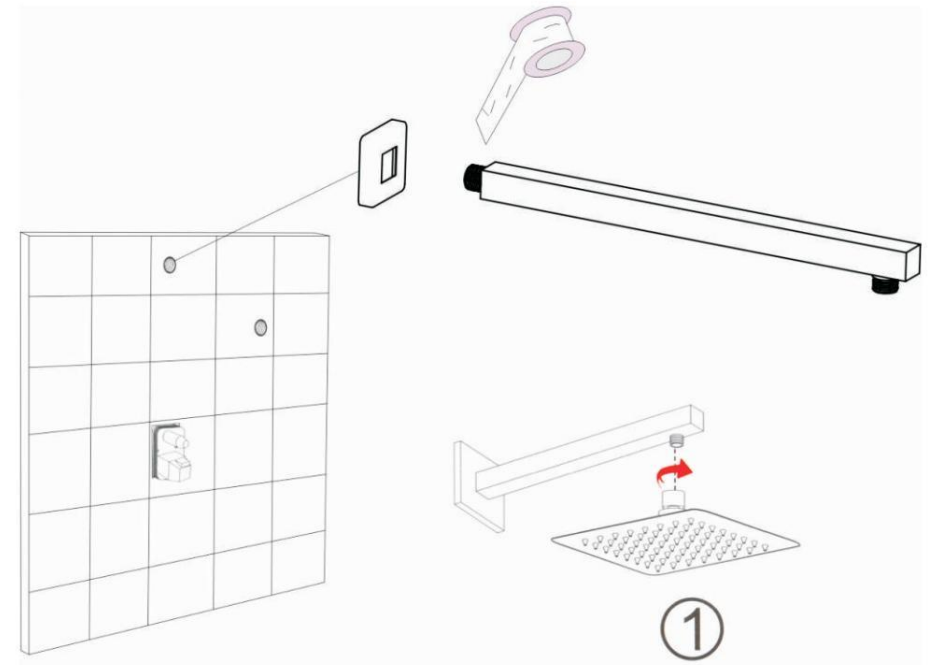
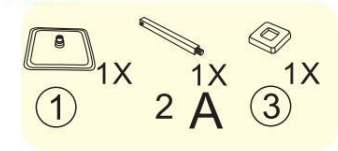
A:Wall Mounted Installation



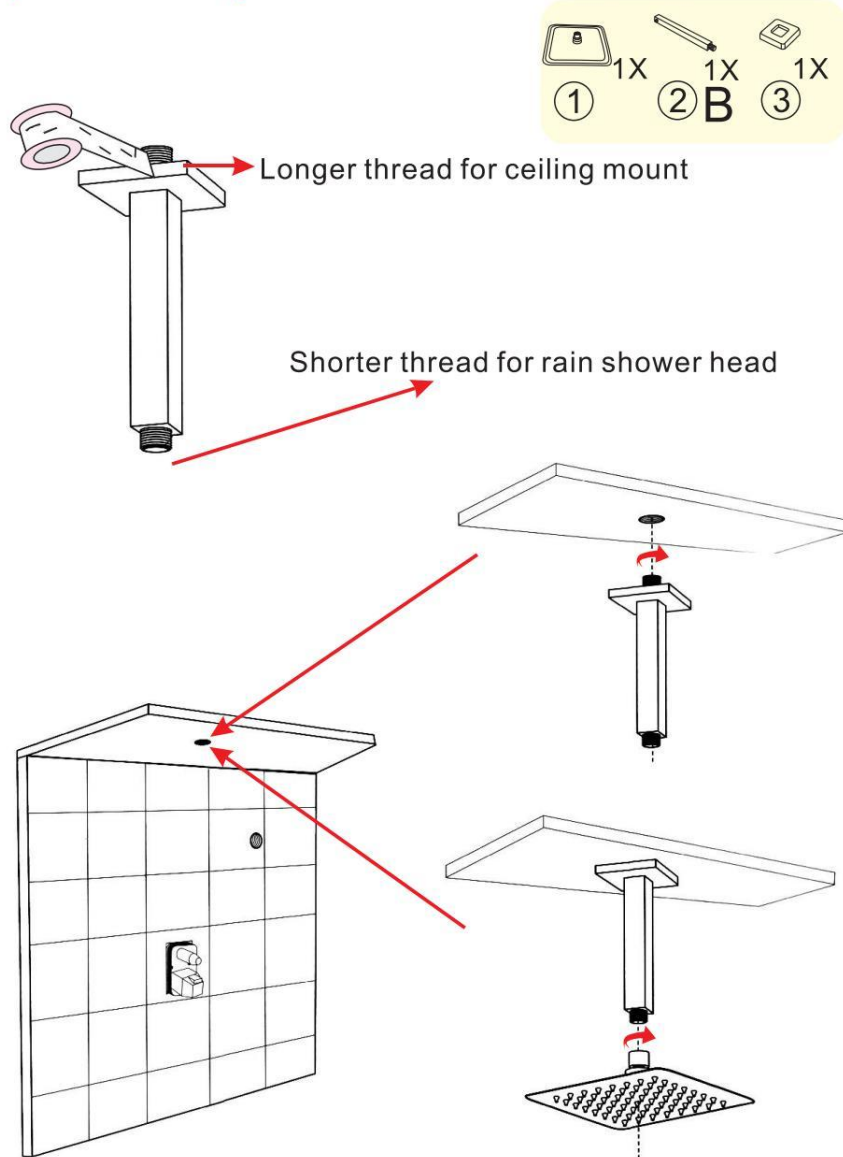
Step 6 :Install hand-held shower and hose



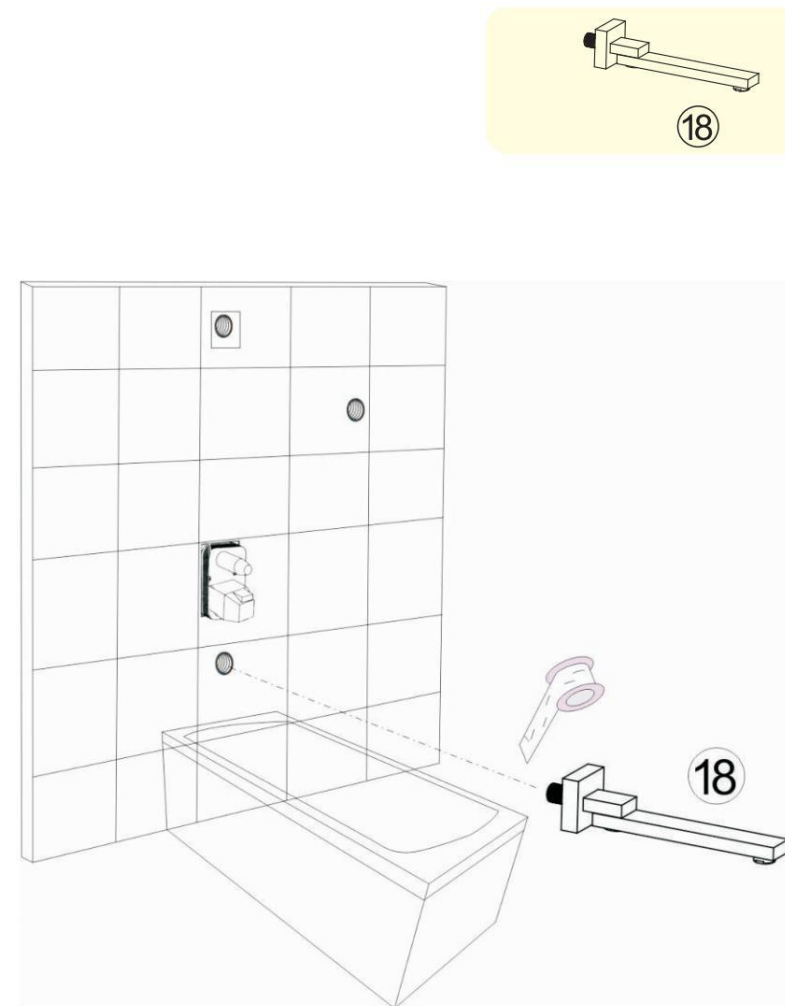
Step 7A :Install Shower Arm and Rain Shower Head



Step 7B :Install Ceiling Shower Arm and Rain Shower Head



Step 8 :Install the tub spout(if have)



Customer Name	
Retailer/Assembly Fitter	
Purchase Date	
Warranty Duration	5 years as of purchase date

- 1.If the above contents are not complete,the warranty will be considered valid,please confirm the above contents when you purchase.
- 2.The complimentary repairs are limited to instances mentioned on the warranty card only.
- 3.Within warranty period,if any technical faults occur,customer should present this warranty card along with the invoice to the retailer/assembly fitter.

Guarantee Repairs Claims

1. Within warranty period, We are responsible for repairing any defective product free of charge.
2. Please contact seller via email with this warranty card and invoice if repairs are needed during the warranty period.
3. Rainlex will not be responsible for any claims listed below:
 - 3.1 The damage and/or malfunction caused by improper use an /or repairs; or any unauthorized reconstruction;including any damage caused by abuse (i.e.fall,throw...etc.)
 - 3.2 Please engage the services of a professional plumber. We will not be responsible for any damage and/malfunction caused by wrongful installation.
 - 3.3 The damage and/malfunction caused by removing after installation or other factors.
 - 3.4 The damage and/malfunction caused by application beyond the scope of usage.
 - 3.5 The damage and/malfunction caused by sand,dirt and other impurities.
 - 3.6 The damage and/malfunction caused by improper/insufficient maintenance; rust on finishing etc...
 - 3.7 The damage and/malfunction caused by fir,earthquakes,flood,lightning and other natural. disasters,pollution,harmful gas,salts,abnormal voltage and otherfactors.
 - 3.8 On occasions when the warrantee card or invoice is not presented.
4. The recommended water temperature of hand shower and rain shower is $\leq 42^{\circ}\text{C}$;water pressure 0.1-0.3 Mpa.The highest temperature should not reach beyond 70°C and water pressure should not exceed the limits of 0.05-0.5 Mpa.Please keep any shower products away from the heating devices to avoid potential risks.
5. This limited warranty applies only to the original end -user or business. It expressly excludes labor charges,removal charges,installation,or other incidental or consequential costs.Any inappropriate application will void the warranty.
6. This warranty cannot be replaced if missed,please keep safe.

Clean and maintain product

How to clean shower head nozzles

1. Just rub the nozzles with your finger or a toothbrush to loosen any deposits, and then run hot water for a few minutes.
2. Put the showerhead into a pot.Consider using a smaller container that just about fits the showerhead; this way, you will use less vinegar. You can also use a small bucket or plastic bin.

Fill the pot with enough white vinegar to cover the showerhead.The acids in the vinegar will help dissolve the white mineral deposits on the showerhead. Let the showerhead soak in the vinegar for 30 minutes.The more soiled the showerhead is, the longer you will have to leave it in the vinegar.

Maintain Chrome and Brushed nickel finished product

1. To clean the products all you need is a high quality microfiber cloth.
2. Apply a high quality chrome cleaner to a clean cotton cloth, and wipe over the chrome. Leave as per product instructions, and then rinse with warm water. Gently remove any product residue using a dry chamois or paper towel.

3. How to Clean Chrome: Homemade Solutions

In addition to professional products, homespun solutions also have their place when breathing new life into dull chrome. Try this shortcut to achieving chrome cleaning nirvana:

Detergent and warm water! Submerge chrome-plated objects including pots and pans in a sink full of warm water. Add a half-cup of a high quality washing up detergent(Persil washing up liquid is good)and rub gently with a soft cotton cloth to avoid scratching the chrome. Use a scented detergent to leave kitchenware smelling fresh, as well as spotless.

Guide for Shower System

SYMPTOM

1. No flow or low flow

- (1) The water pressure in the water supply system is too low - increase the water supply pressure, or install a booster pump
- (2) Inlet pipes, outlet pipes, or other pipes are blocked, resulting in low water flow - please flush the pipes or contact the plumber for disposal (please follow the installation steps above to clean the pipes in advance).
- (3) Shower head, hose, thermostatic valve inlet/outlet blockage, resulting in low water flow - regular cleaning to prevent impurities from clogging
- (4) The filter inlet is partially blocked. - Clean or repaint and flush the tubing before reinstalling.
- (5) Correctly use the handle to adjust the water temperature, the water is too cold or too hot - check the water pressure of the water supply system, increase the water flow or pressure through the booster pump, if the water heater fails, you need to contact the water heater manufacturer to solve.
- (7) The distance of the water jet is too short - Please increase the water pressure (check and adjust the water pressure in the water supply system, or install a booster pump), or pick up the hand shower.
- (8) No hot or cold water reaches the shower valve. - Check the cold water and hot water inlet pipes (if the hot or cold supply fails, the valve will close).
- (9) Incorrect installation, resulting in improper inlet pressure - please refer to the Installation Manual to ensure that the inlet pressure maintained is normal/balanced and sufficient.

2. Water temperature change

The water temperature suddenly becomes high or low during the shower. - A large amount of cold water or hot water is taken from other places, causing the water pressure to change. Do not use other water outlets during the shower or check if the water heater is working properly;

3. Shower head dripping

- (1) The dripping water is normal if in short time. Please try to change the angle of the shower head which may solve this problem.
- (2) If it is a long period of dripping, that may be the shower control valve has not been completely closed. - Remove the shower control valve assembly and check if the shower valve is blocked.
- (3) The flow control valve seal is damaged. - Check the status of the flow control valve and replace as needed.

Importance

Please read the following instructions carefully before installing the shower system.
If you have questions after receiving the goods, please send us an email on Amazon.

To ensure the installation process is safe and fast, it's better to hire an experienced plumber to complete the installation.

Maintenance Guide

Please follow the cleaning material manufacturer's instructions. In addition, pay attention to the following points:

- 1. Regular cleaning can prevent mineral build up on shower head and hand held shower.
- 2. Use a mild detergent such as liquid dishwashing soap and warm water for cleaning.
- 3. Do not use abrasive/harsh chemical when cleaning the fixture as they will damage and dull the finish.
- 3. Carefully read the cleaner product label to ensure the cleaner is safe for use on the material.
- 4. Test the cleaner on a small area before using on the entire surface.
- 5. Do not leave the cleaner on the fixture longer than necessary.
- 6. When using spray cleaners, spray first onto a soft cloth or sponge. Never spray directly onto the faucet as droplets can enter openings and gaps and cause damage.

To ensure the installation process is safe and fast, it's better to hire an experienced plumber to complete the installation.

Thank you for choose us.

During your installation ,Pls feel free to send us email if you have any question.

We will assist you without any charge.