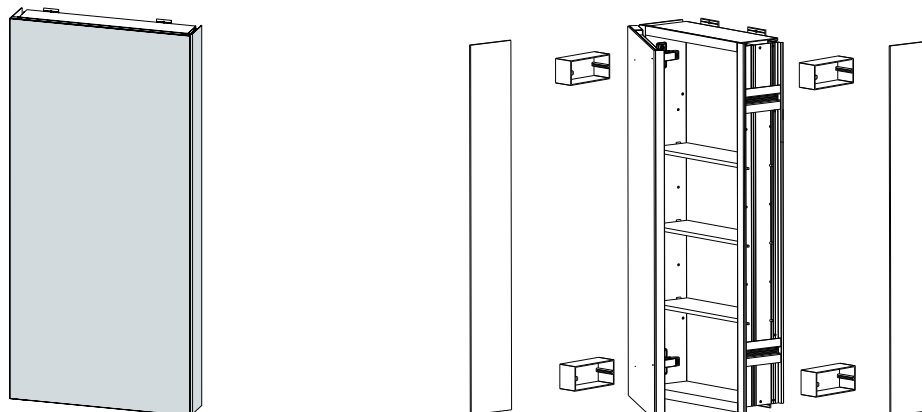


# INSTALLATION MANUAL - *Manual de Instalación*



## **THANK YOU / Gracias**

We can assure you that has used the best materials and has applied the strictest quality control measures to ensure that each and every unit meets the highest quality standards. This booklet contains general information about the unit as well as step-by-step installation instructions.

*Podemos asegurarle que se han utilizado los mejores materiales y se han aplicado las más estrictas medidas de control de calidad para garantizar que cada unidad cumpla con los más altos estándares de calidad. Este folleto contiene información general sobre la unidad, así como instrucciones de instalación paso a paso.*

## **BEFORE BEGINNING / Antes de comenzar**

Carefully read the instructions before beginning the installation

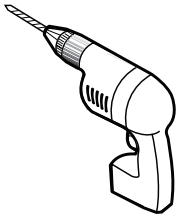
- It is recommended that you wear safety glasses at all times during the installation
- Observe all local plumbing and building codes.
- It is strongly recommended that this installation be performed by a professional plumber or contractor.

*Lea cuidadosamente las instrucciones antes de comenzar la instalación.*

- *Se recomienda usar gafas de seguridad en todo momento durante la instalación.*
- *Observe todos los códigos locales de plomería y construcción.*
- *Se recomienda encarecidamente que esta instalación sea realizada por un plomero o contratista profesional.*

Product specifications are subject to change without notice • Las especificaciones del producto están sujetas a cambios sin previo aviso.

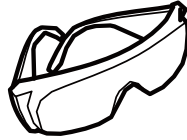
**TOOLS REQUIRED / Herramientas necesarias**



**DRILL**  
*PERFORADORA*



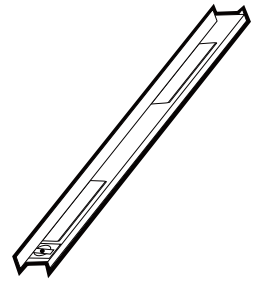
**3/32" DRILL BITS**  
*BROCAS DE 3/32"*



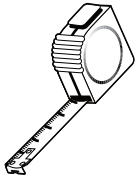
**SAFETY GLASSES**  
*GAFAS DE SEGURIDAD*



**SCREWDRIVER**  
*DESTORNILLADOR*



**LEVEL**  
*NIVEL*



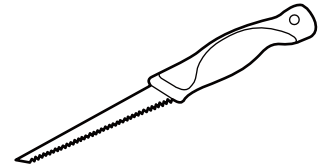
**TAPE MEASURE**  
*CINTA MÉTRICA*



**PENCIL**  
*LÁPIZ*

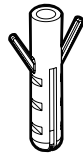
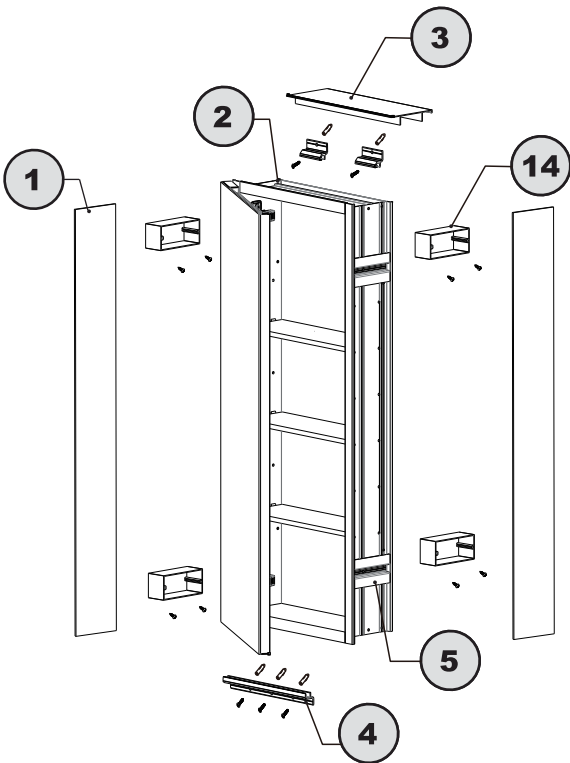


**STUD SENSOR**  
*SENSOR DE VIGAS*

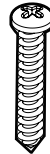


**CEMENT BOARD SAW**  
*SIERRA PARA TABLERO DE CEMENTO*

**PARTS LISTING / Listado de piezas**



**6**



**7**



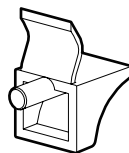
**8**



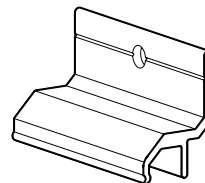
**9**



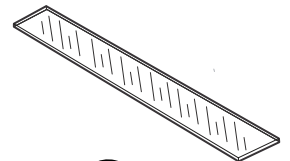
**10**



**11**



**12**



**13**

**HARDWARE LISTING / Listado de herrajes**

<b>ITEM</b>	<b>PARTS LISTING / Listado de piezas</b>	<b>QTY</b>
1	<b>SIDE PANEL / Panel lateral</b>	2
2	<b>MIRROR CABINET / Armario con espejo</b>	1
3	<b>TOP PLATE / Placa superior</b>	1
4	<b>BOTTOM SUPPORT / Soporte inferior</b>	1
5	<b>SIDE MOUNTED BRACKET / Soporte lateral</b>	4
6	<b>WALL PLUG 35.5*7.1 / Taco de pared</b>	9
7	<b>SCREW / Tornillo</b>	9
8	<b>SCREW / Tornillo</b>	16
9	<b>SCREW CAP / Tapa de tornillo</b>	25
10	<b>HOLE CAP / Tapa de agujero</b>	24
11	<b>SHELF SUPPORT PEG / Clavija de soporte de estante</b>	12
12	<b>TOP BRACKET / Soporte superior</b>	2
13	<b>GLASS SHELF / Estante de vidrio</b>	3
14	<b>CABINET CONNECTOR / Conector del armario</b>	4

\* FOR SURFACE MOUNTED INSTALLATION SEE PAGE 6  
FOR RECESSED INSTALLATION SEE PAGE 13

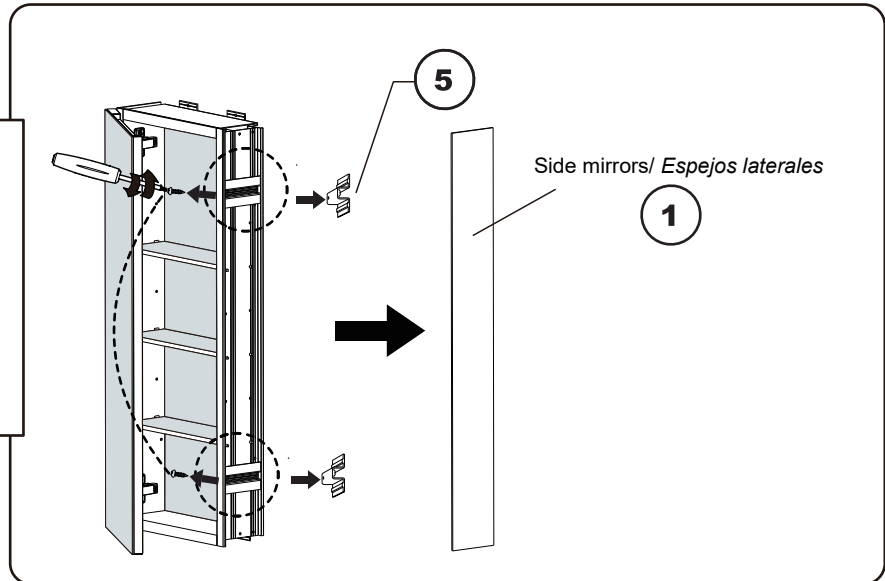
\* PARA INSTALACIÓN SOBRE SUPERFICIE, VEA LA PÁGINA 6.  
PARA INSTALACIÓN EMPOTRADA, VEA LA PÁGINA 13.

# HOW TO CONNECT MIRROR CABINETS/Cómo conectar los armarios con espejo

## **Step 1/Paso 1**

Loosen the screws and remove the side mounted brackets and side mirrors.

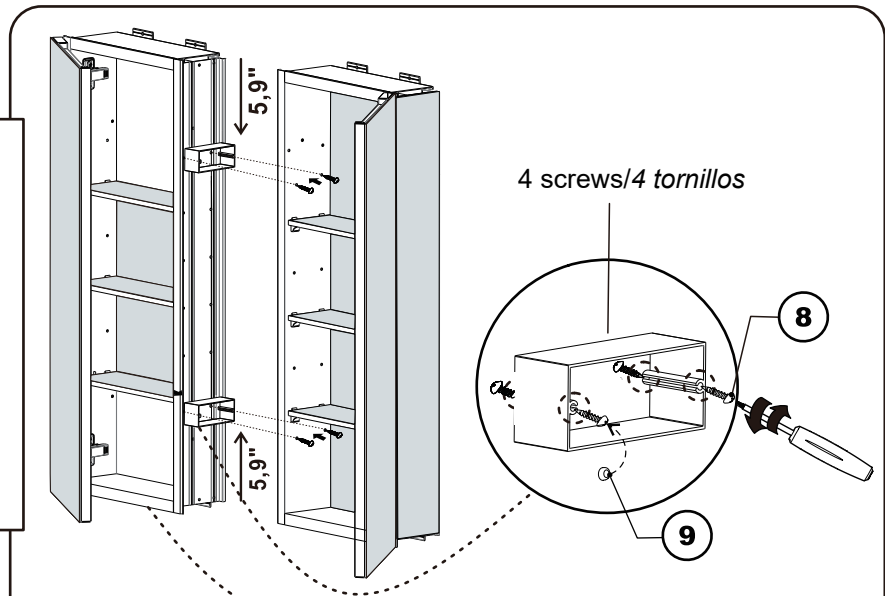
*Afloje los tornillos y retire los soportes laterales y los espejos laterales.*



## **Step 2/Paso 2**

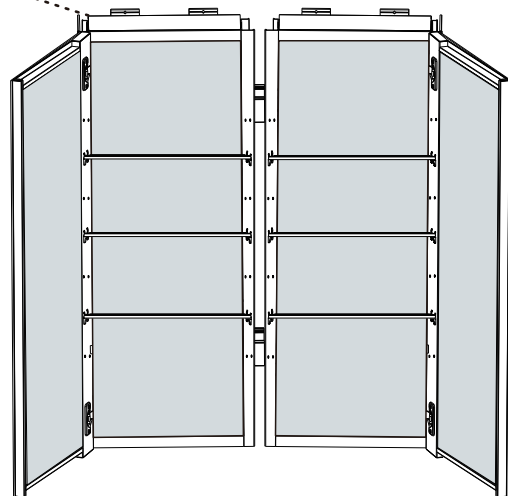
Install the cabinet connectors. Each connector requires 4 screws for installation.

*Instalar los conectores del armario. Cada conector requiere 4 tornillos para la instalación.*



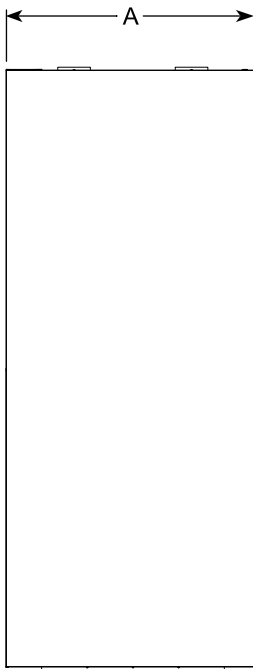
For two cabinets, install 2 connectors; for three cabinets, install 4 connectors.

*Para dos armarios, instale 2 conectores; para tres armarios, instale 4 conectores.*



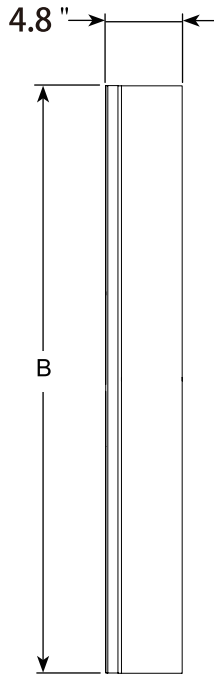
**SINGLE DOOR MODEL, SIZE SPECIFICATIONS / Modelo de una puerta, especificaciones de tamaño**

MODEL / Modelo	WIDTH / Ancho (A)	HEIGHT / Altura (B)
WYMC1230-LR	12"	30"
<p><b>*FORMULA TO CALCULATE THE CUT OUT FOR RECESSED INSTALLATION</b>  <i>Fórmula para calcular el corte para instalación empotrada</i></p>		
<p><b>CUTOUT WIDTH = A - 0.512 "</b>  <b>CUTOUT HEIGHT = B - 0.512 "</b></p>		



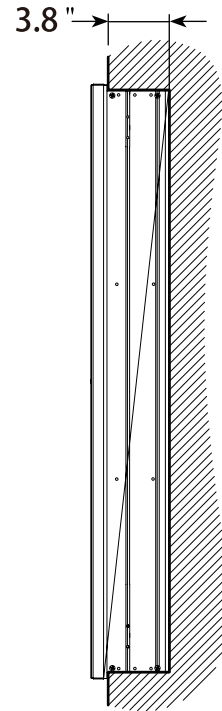
FRONT VIEW  
Vista frontal

WALL MOUNTED / Montado en la pared



SIDE VIEW  
vista lateral

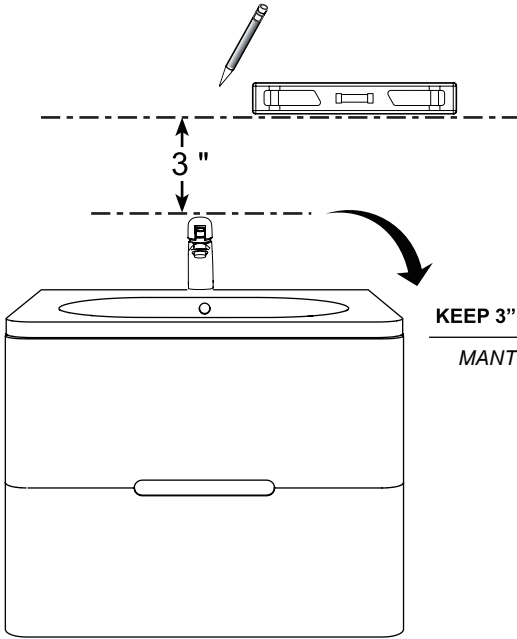
\* RECESSED / Empotrado



SIDE VIEW  
vista lateral

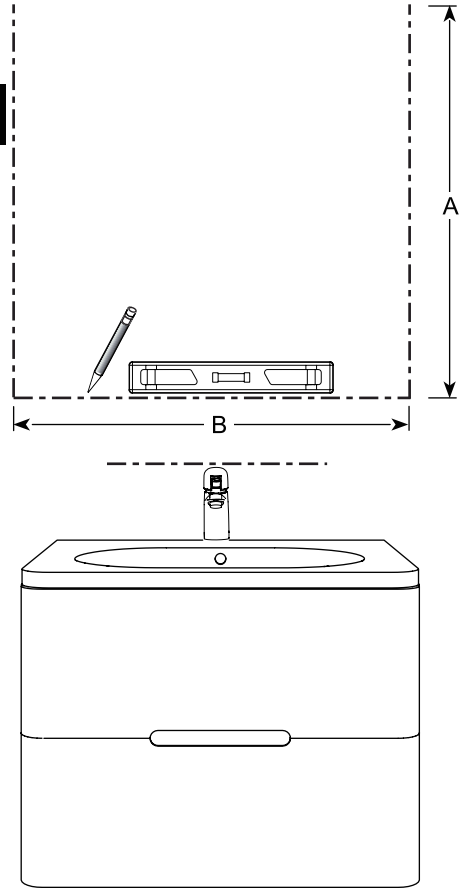
**1 LEVEL AND MARK THE CABINET POSITION / NIVELAR Y MARCAR LA POSICIÓN DEL ARMARIO**

**A**

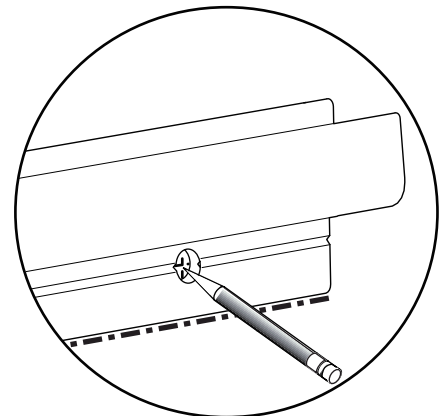
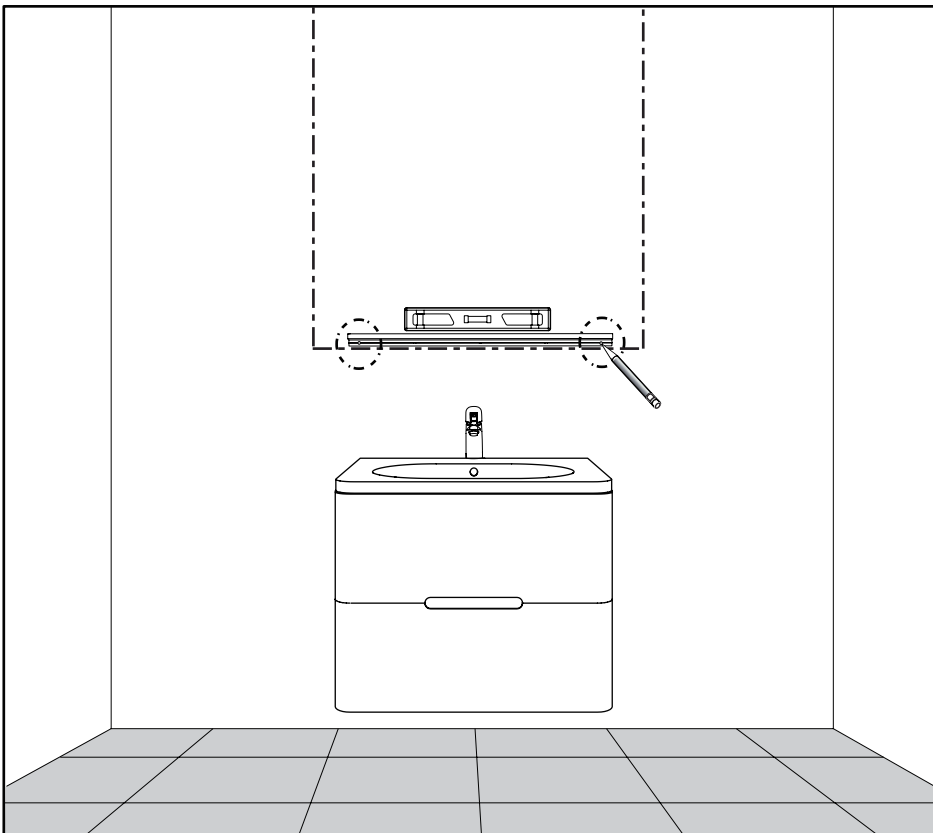


**KEEP 3" MINIMUM CLEARANCE.**  
*MANTENER UNA DISTANCIA  
MÍNIMA DE 3"*

**B**

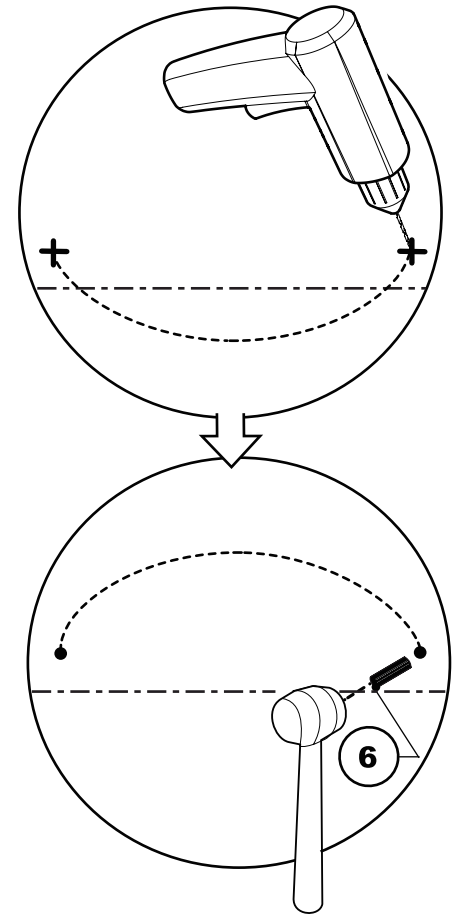
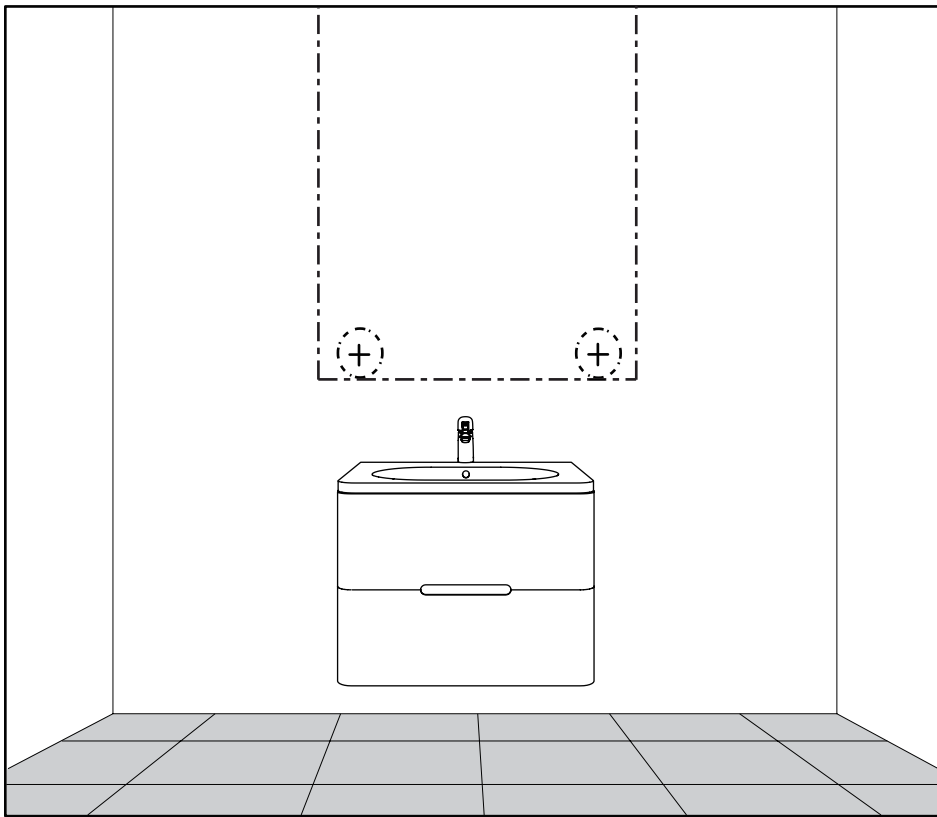


**2 MARK THE BOTTOM SUPPORT ON THE WALL / MARCAR EL S OPORTE INFERIOR EN LA PARED**



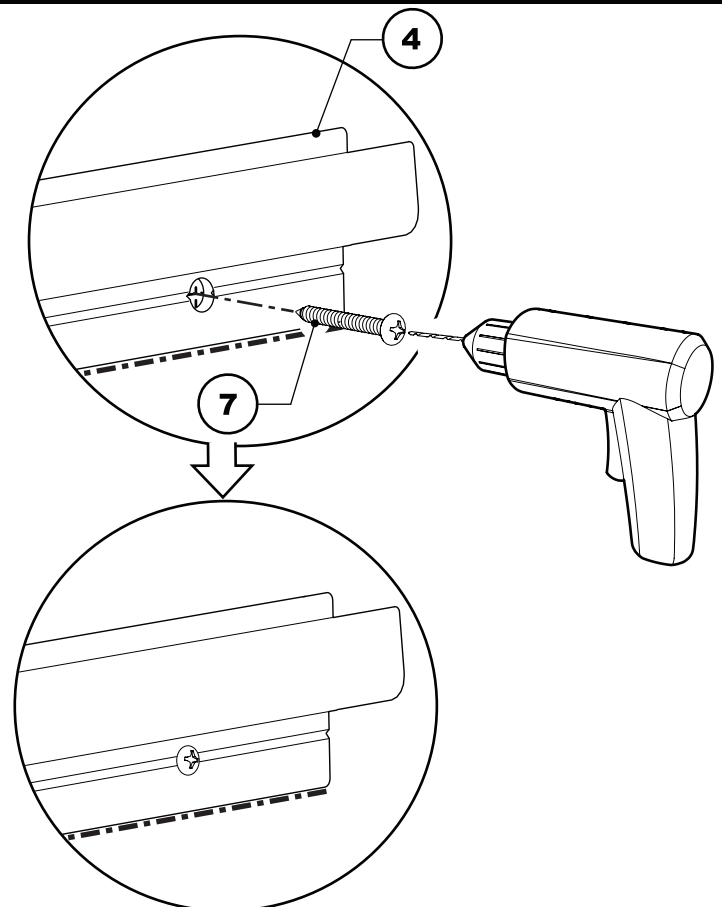
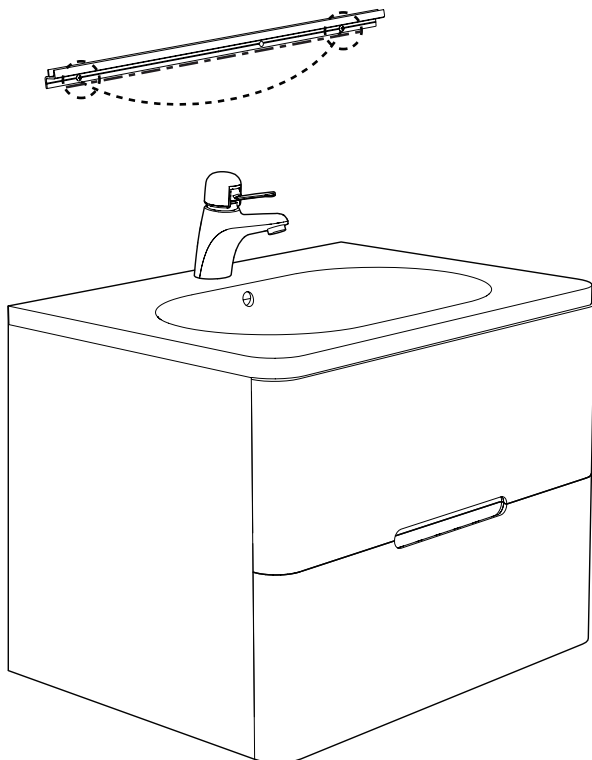
3

DRILL AND INSERT THE WALL PLUGS / PERFORAR E INSERTAR LOS TACOS EN LA PARED



4

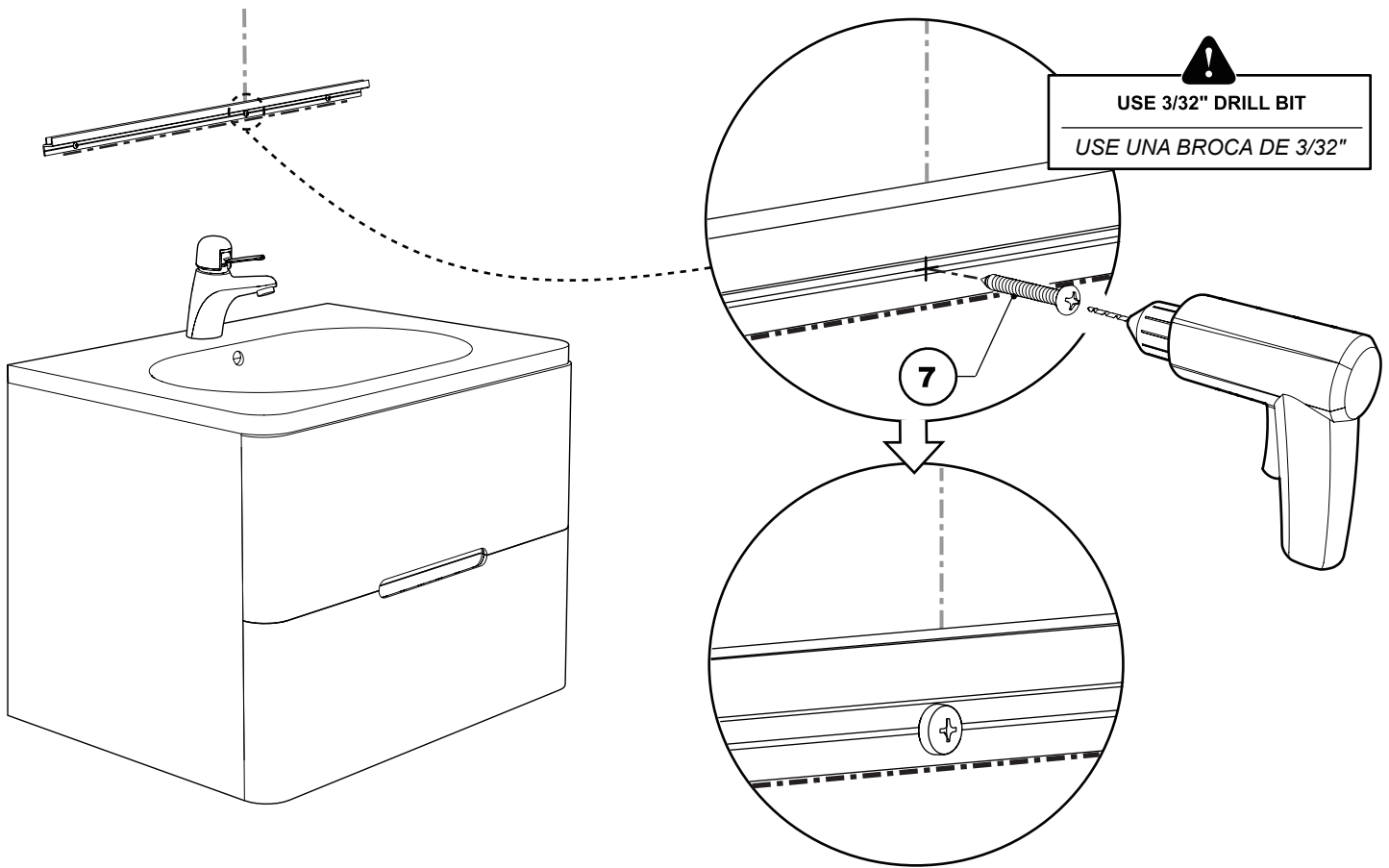
PLACE THE BOTTOM SUPPORT ON PREVIOUS MARK AND INSTALL THE BOTTOM SUPPORT  
COLOCAR EL SOPORTE INFERIOR SOBRE LA MARCA PREVIA E INSTALAR EL SOPORTE INFERIOR



5

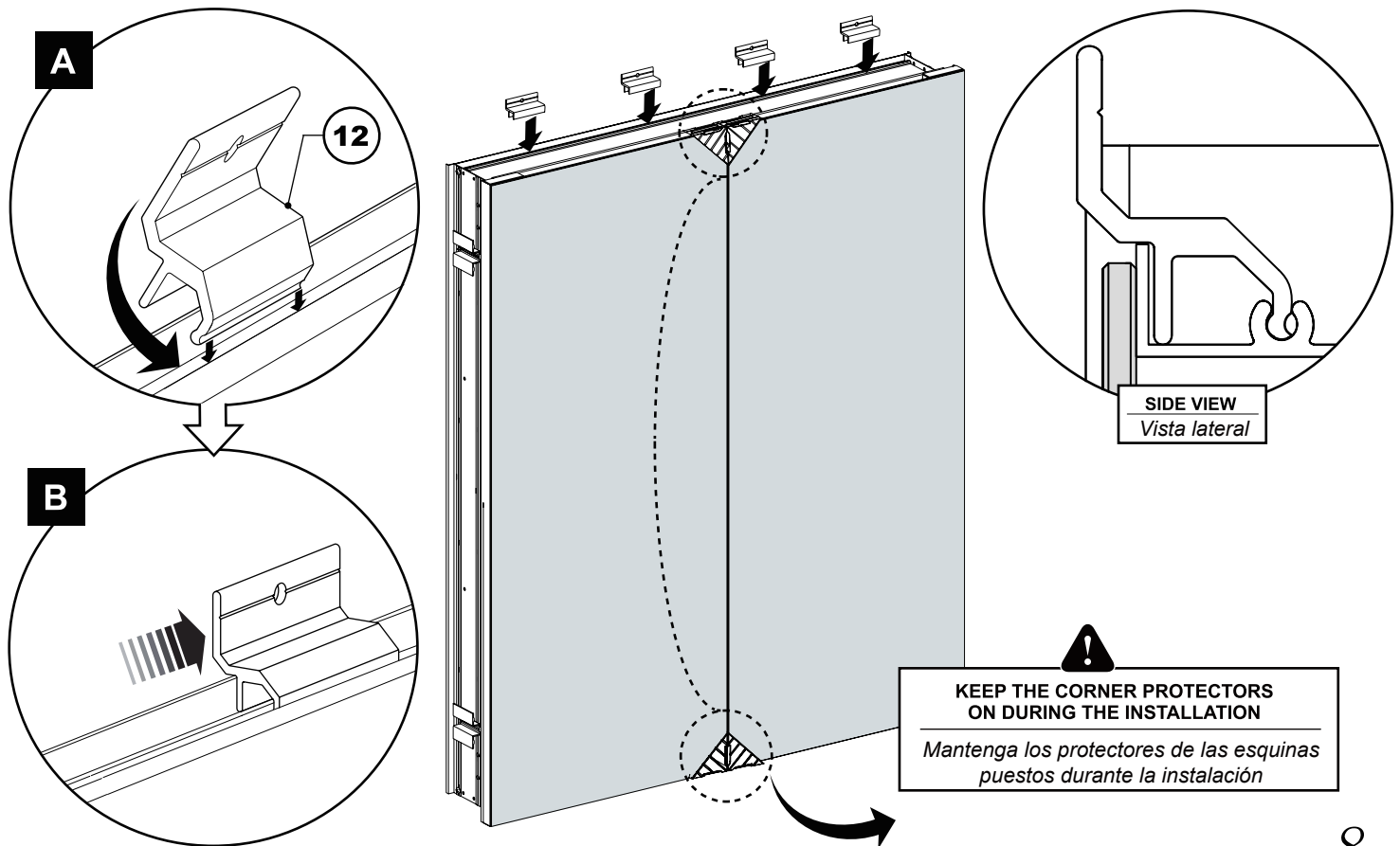
**FASTEN THE BOTTOM SUPPORT ON THE STUD**

*FIJAR EL SOPORTE INFERIOR A LA VIGA*

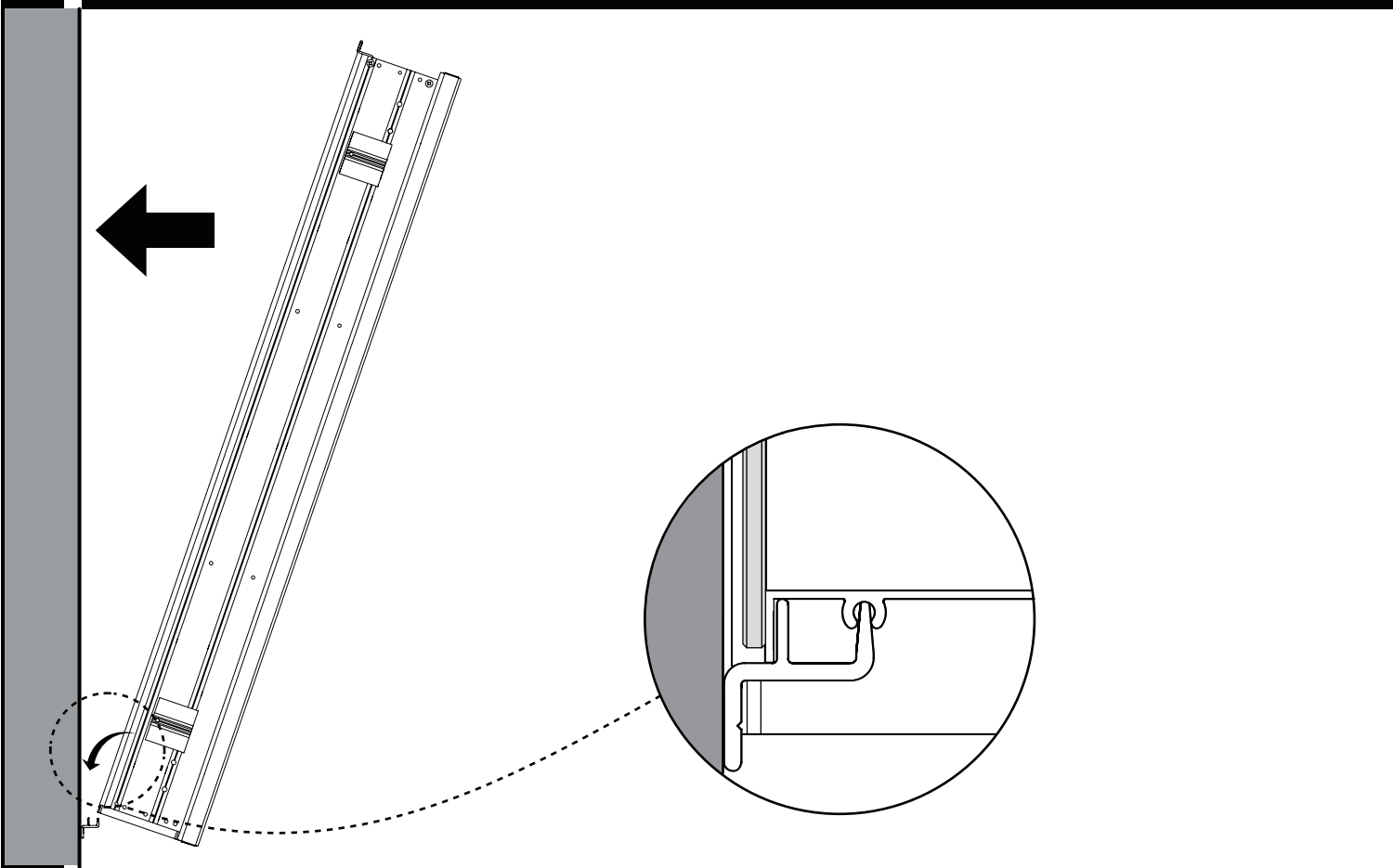


6

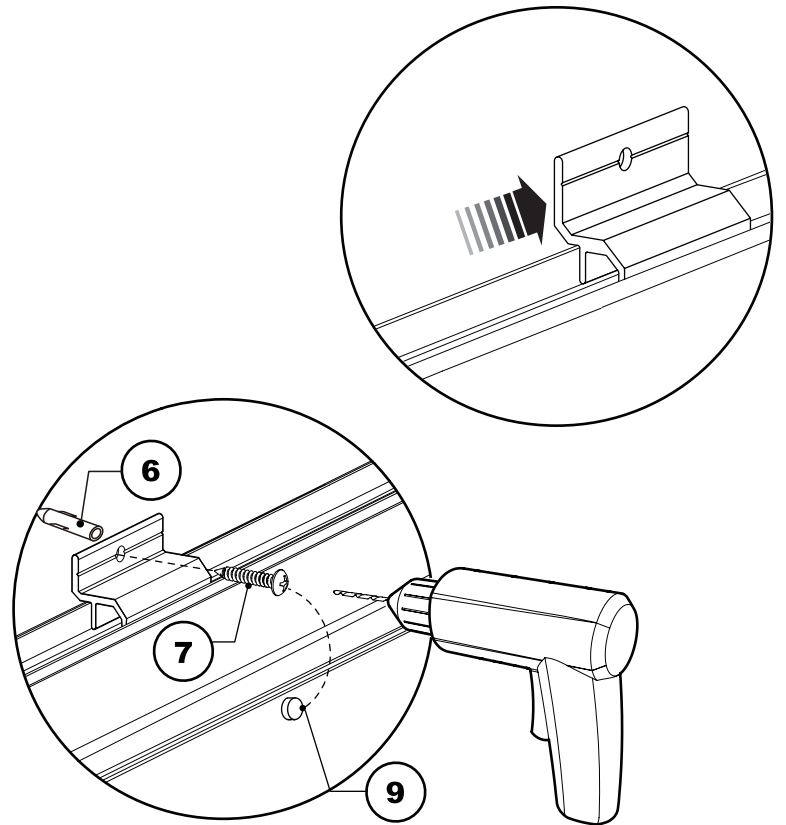
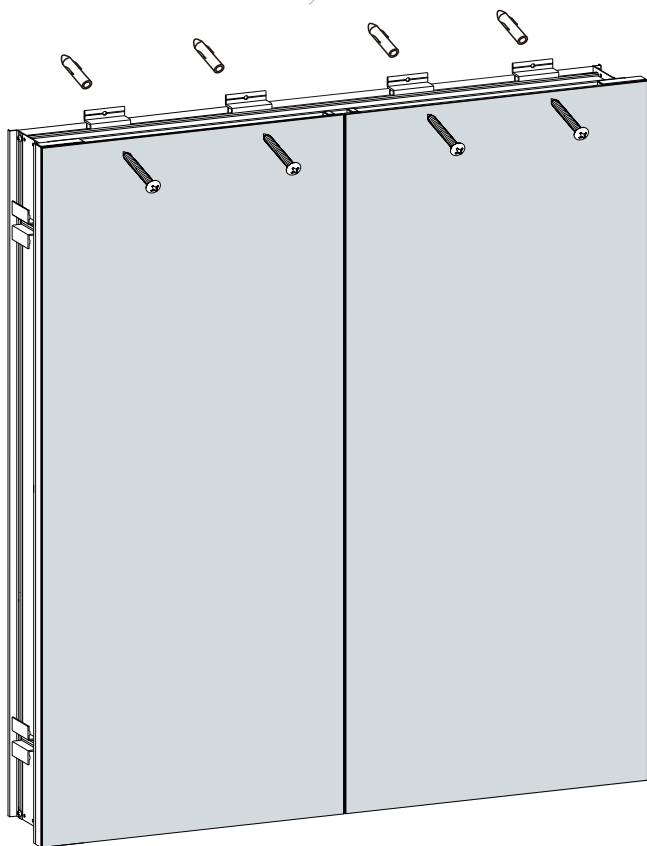
**INSTALL THE TOP BRACKETS / INSTALAR LOS SOPORTES SUPERIORES**

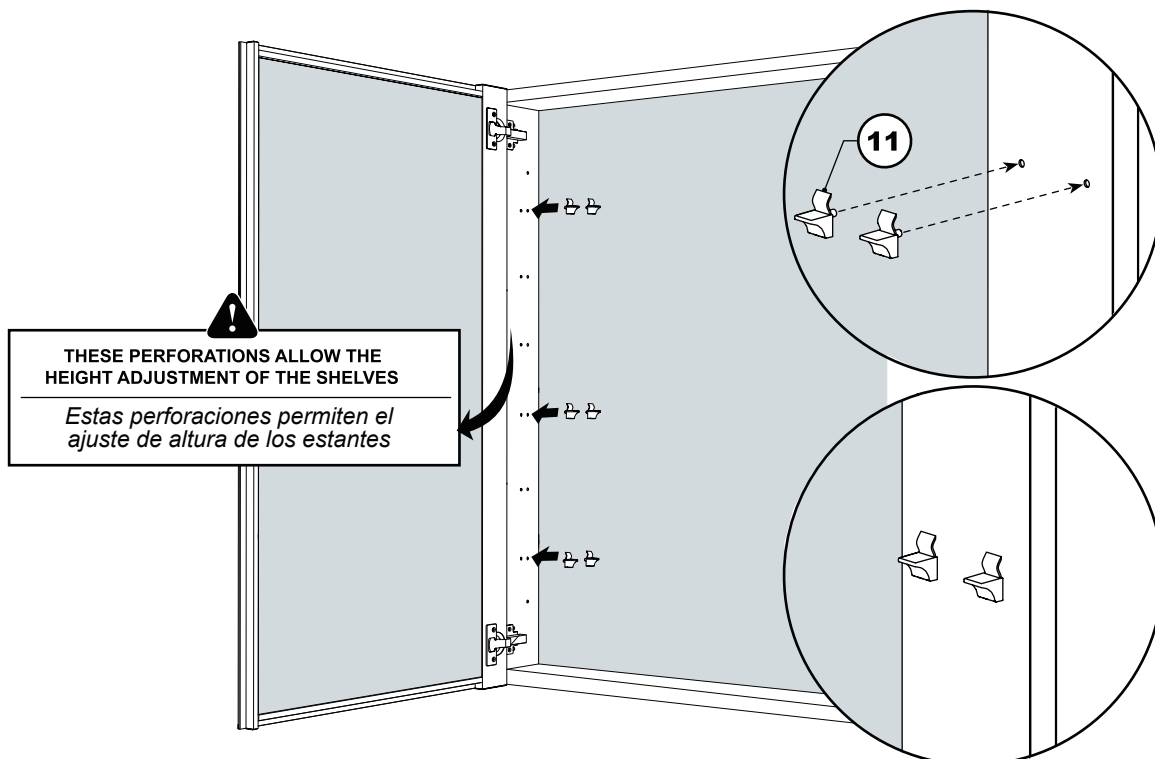
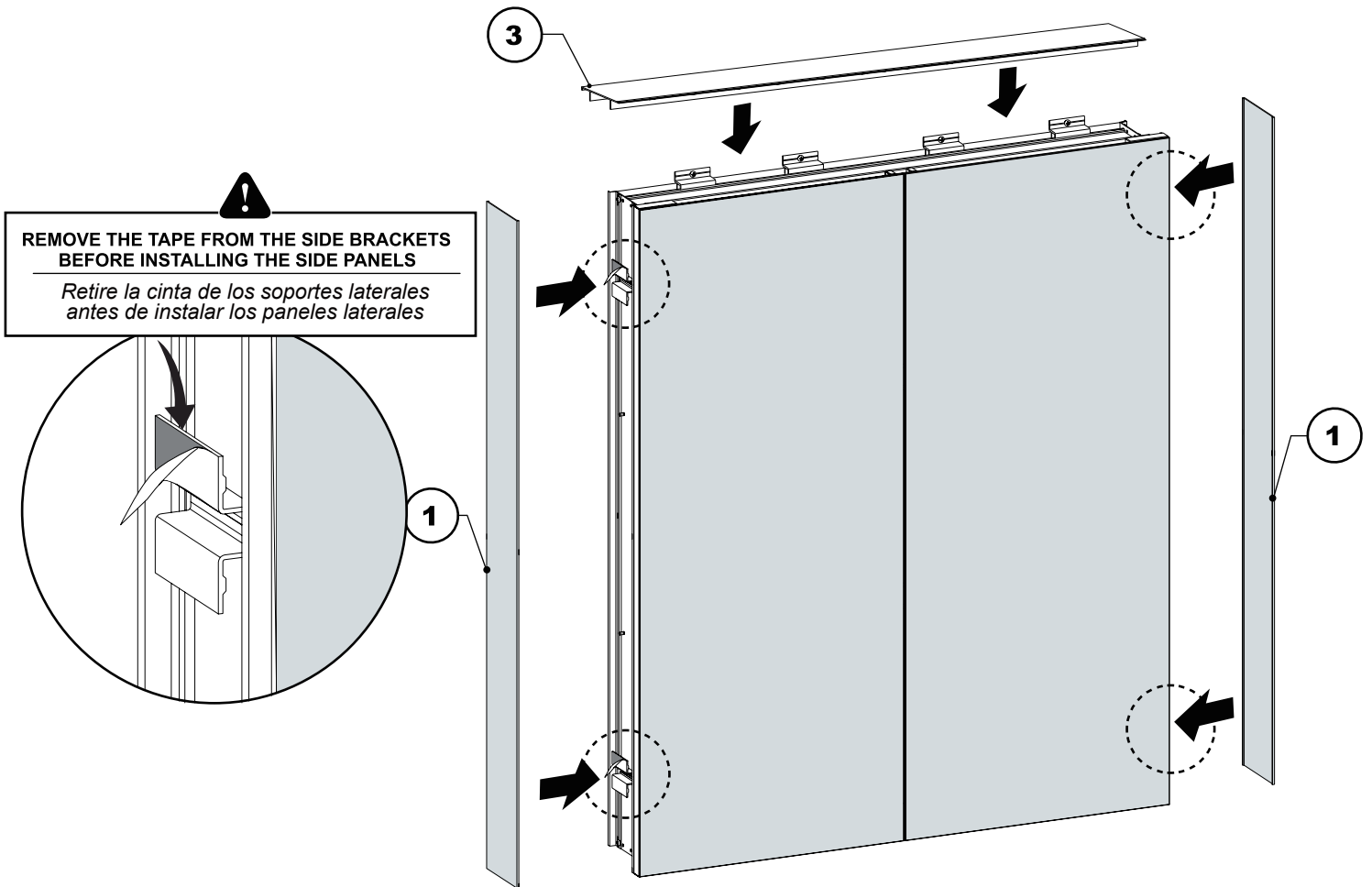


**7 PLACE THE CABINET ON THE WALL / COLOCAR EL ARMARIO EN LA PARED**

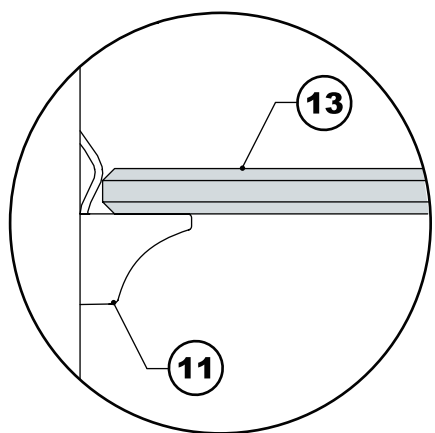
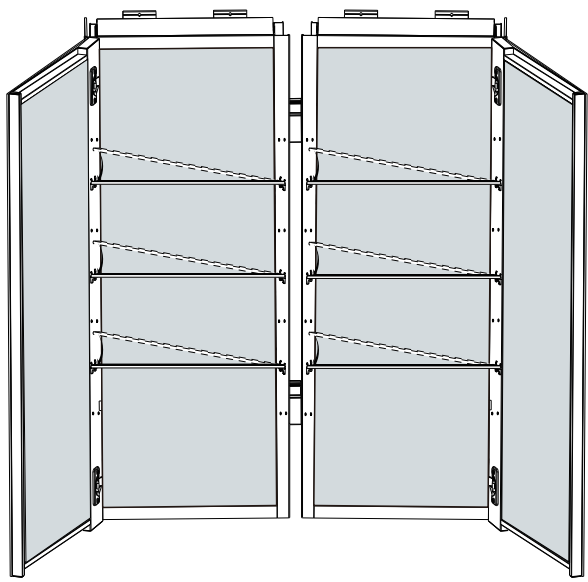


**8 ADJUST THE BRACKETS AND INSTALL / AJUSTAR LOS SOPORTES E INSTALAR**

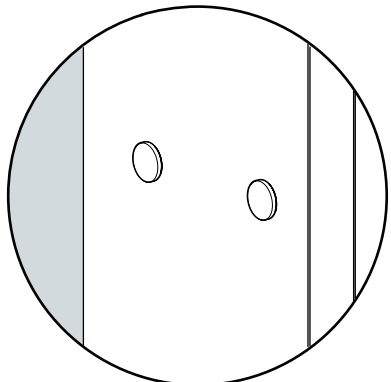
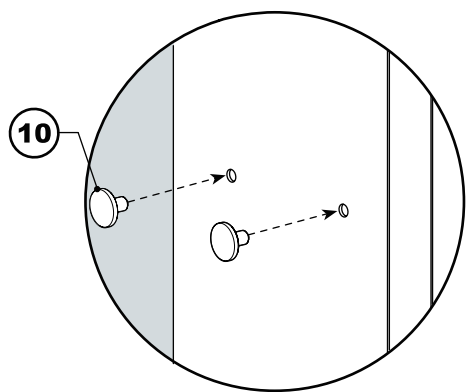
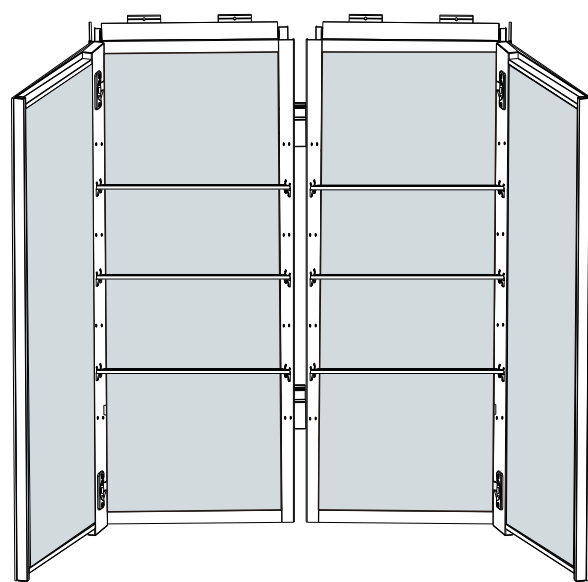


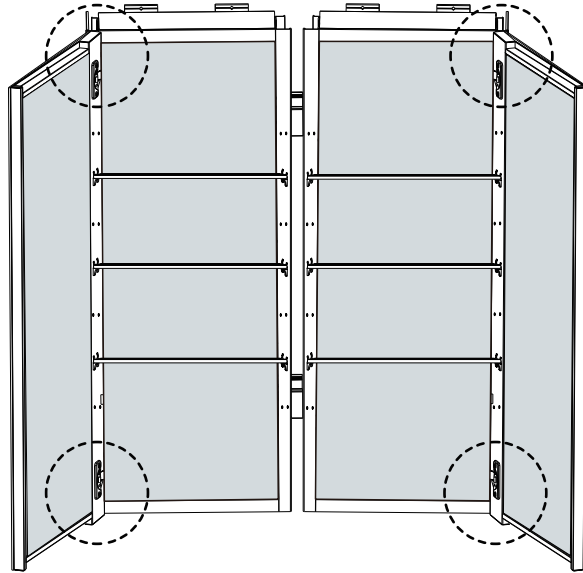
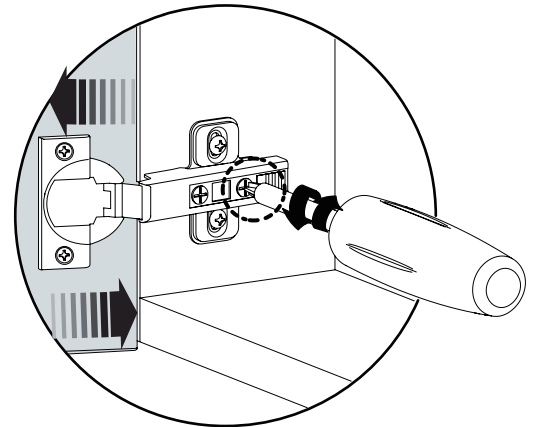
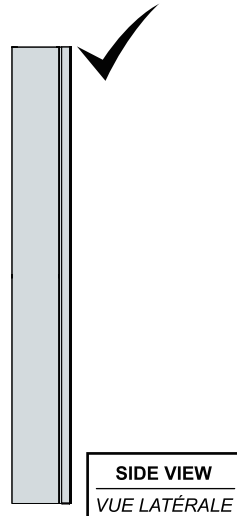
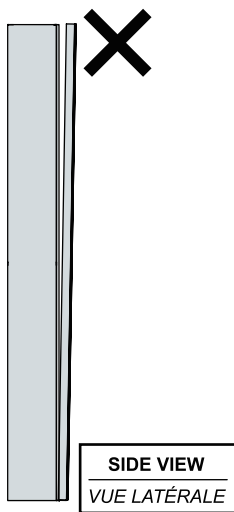
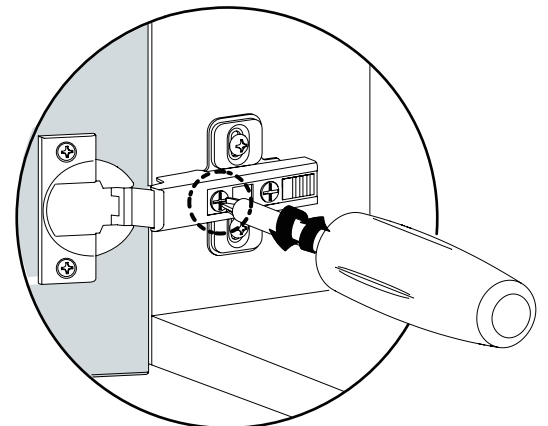
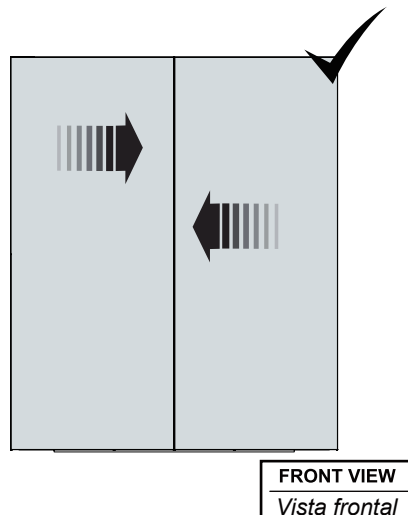
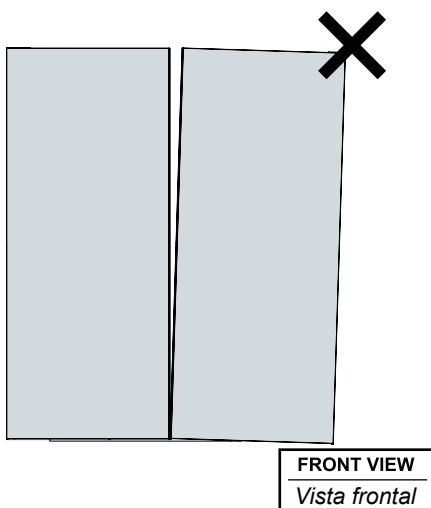


**11** **INSTALL THE GLASS SHELVES / INSTALAR LOS ESTANTES DE VIDRIO**

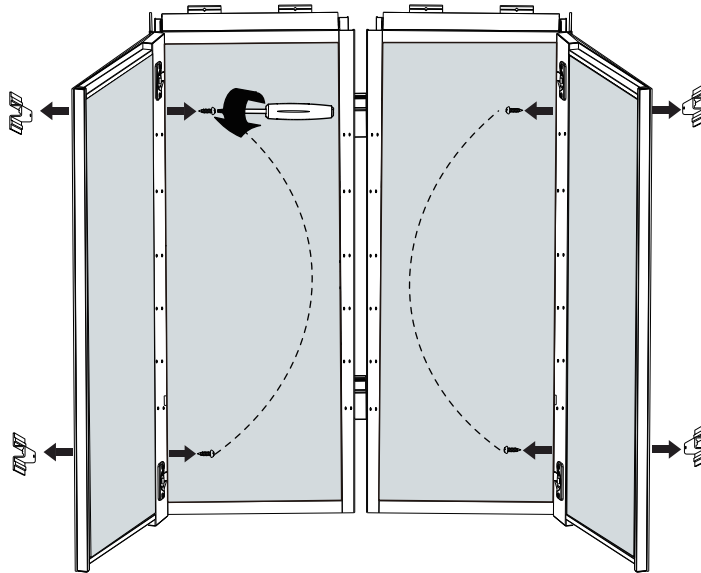


**12** **INSTALL THE HOLE CAPS / INSTALAR LAS TAPAS DE LOS AGUJEROS**

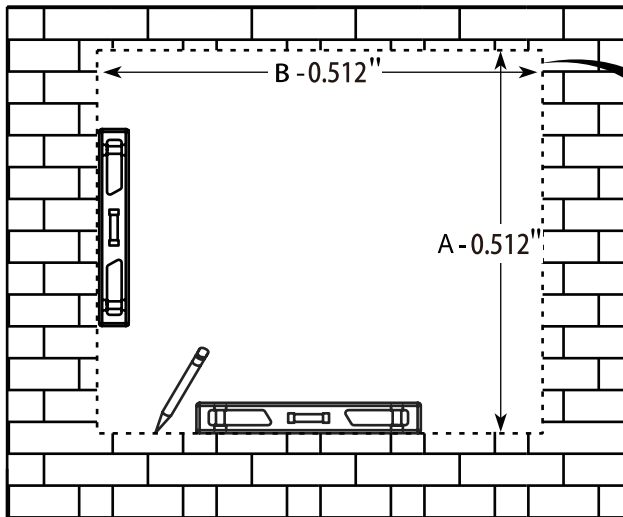



**A** ADJUST THE GAP BETWEEN DOOR AND CABINET / *Ajustar el espacio entre la puerta y el armario*

**B** ADJUST THE GAP BETWEEN DOORS / *Ajustar el espacio entre las puertas*


**1 REMOVE THE SIDE MOUNTED BRACKET / RETIRAR EL SOPORTE LATERAL**



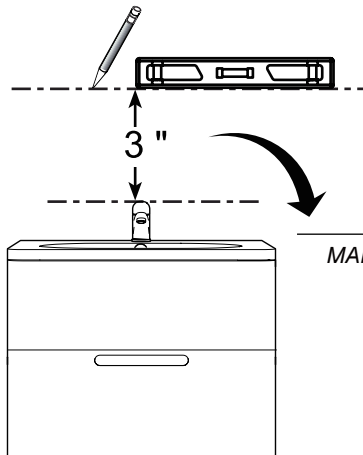
**2 LEVEL AND MARK THE DIMENSION FOR RECESSED CABINET / NIVELAR Y MARCAR LAS DIMENSIONES PARA EL ARMARIO EMPOTRADO**



\* REFER TO PAGES 4 FOR CUTOUT SIZE SPECIFICATIONS  
*CONSULTE LAS PÁGINAS 4 PARA LAS ESPECIFICACIONES DEL TAMAÑO DEL CORTE*

**IT IS RECOMMENDED TO HAVE THIS STAGE CARRIED OUT BY A PROFESSIONAL**

*Se recomienda que esta etapa sea realizada por un profesional*

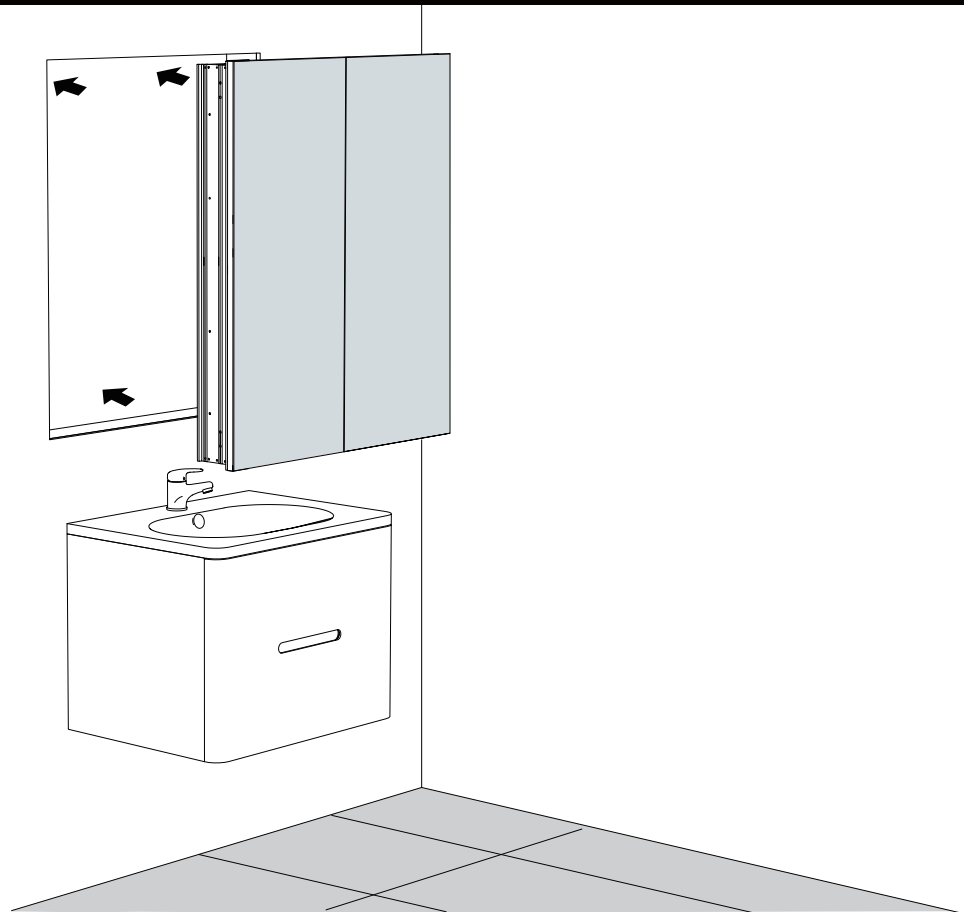


**KEEP 3" MINIMUM CLEARANCE .**

*MANTENER UNA DISTANCIA MÍNIMA DE 3"*

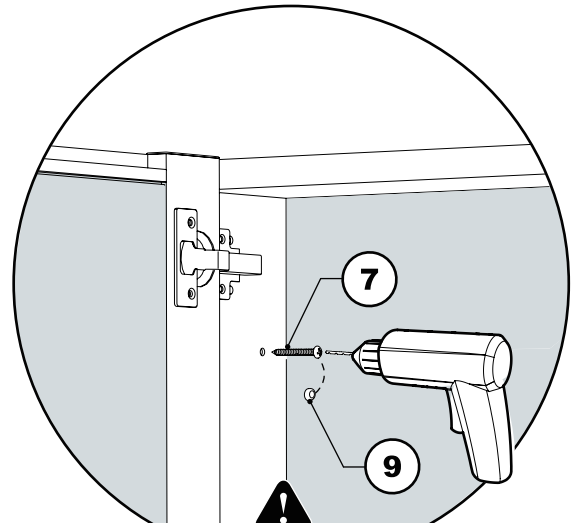
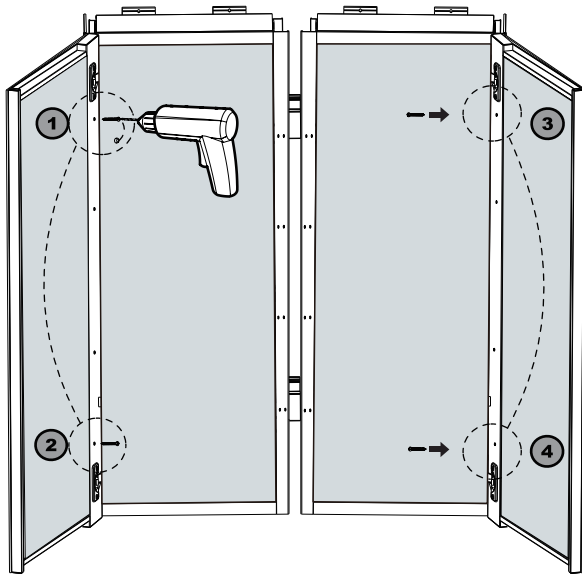
3

PLACE THE CABINET INTO THE WALL / COLOCAR EL ARMARIO EN LA PARED



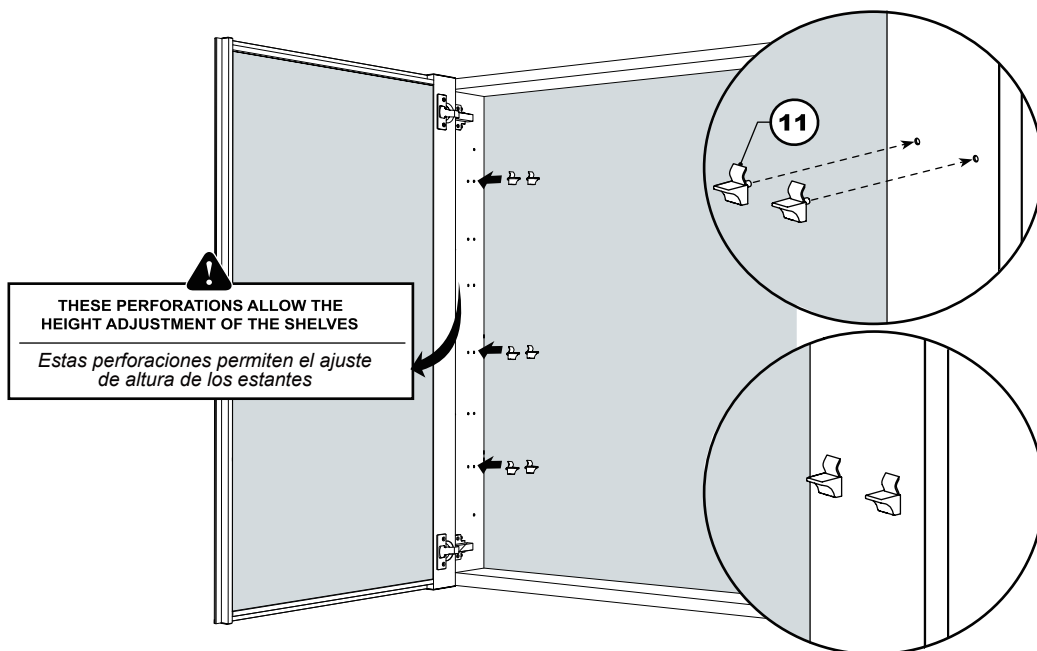
4

SECURE THE MEDICINE CABINET INTO THE WALL / FIJAR EL ARMARIO DE MEDICINA A LA PARED

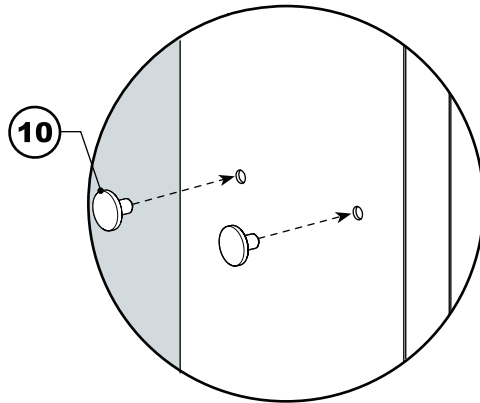
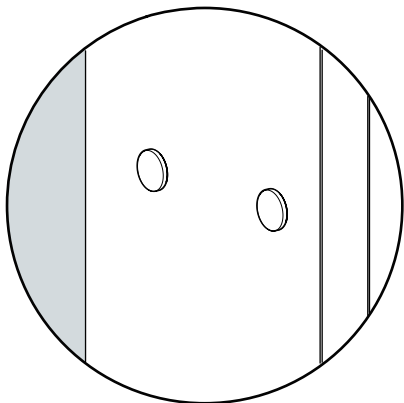
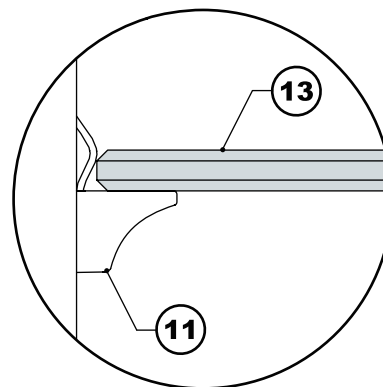
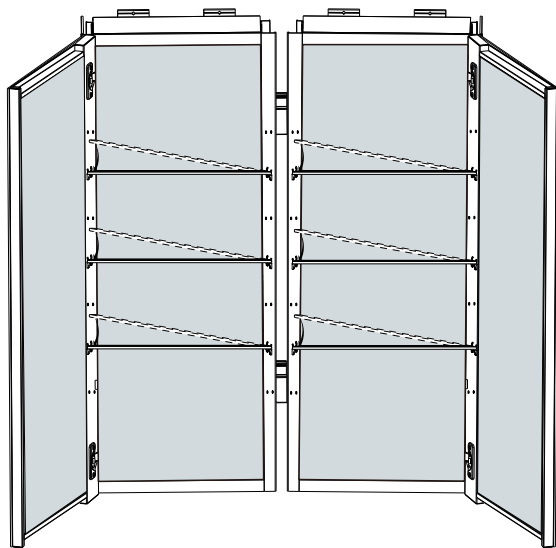


**DON'T TIGHTEN THE SCREW WITH A DRILL. TIGHTEN THE SCREW MANUALLY**

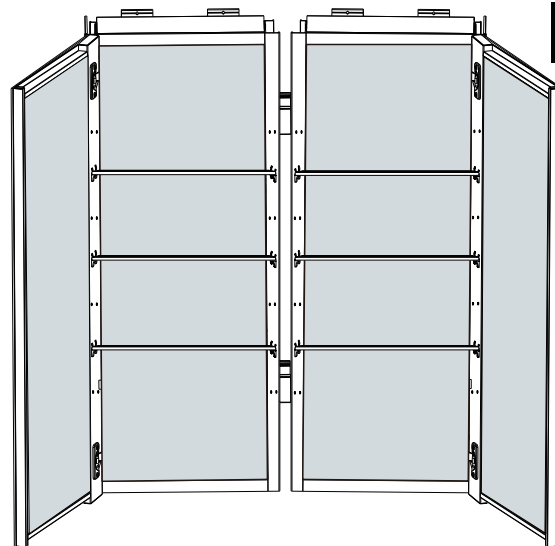
*No apriete el tornillo con un taladro.  
Apriete el tornillo manualmente.*

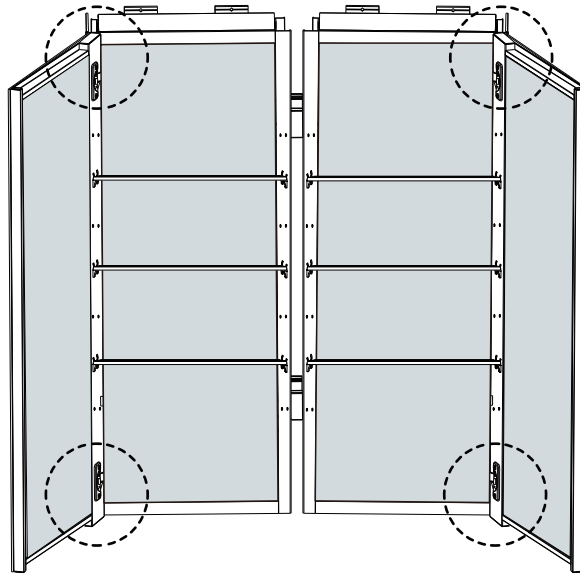


A

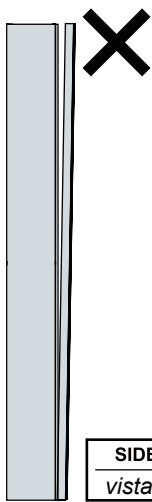


B

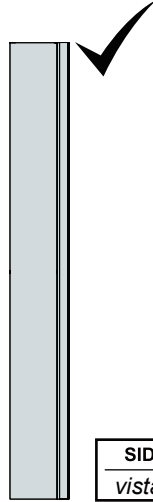




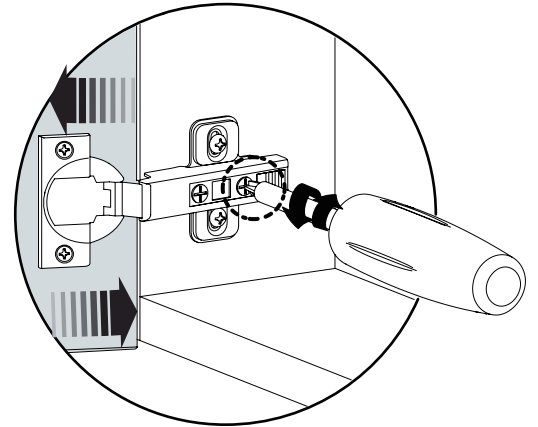
**A** ADJUST THE GAP BETWEEN DOOR AND CABINET / Ajustar el espacio entre la puerta y el armario



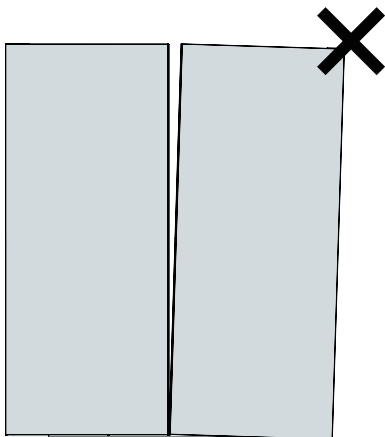
SIDE VIEW  
vista lateral



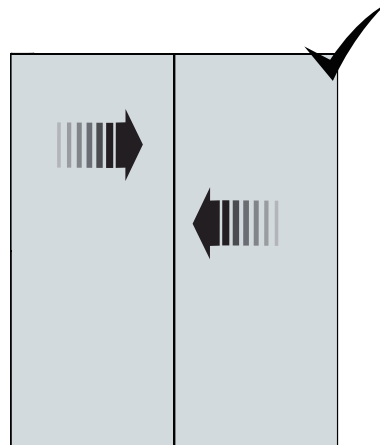
SIDE VIEW  
vista lateral



**B** ADJUST THE GAP BETWEEN DOORS / Ajustar el espacio entre las puertas



FRONT VIEW  
Vista frontal



FRONT VIEW  
Vista frontal

