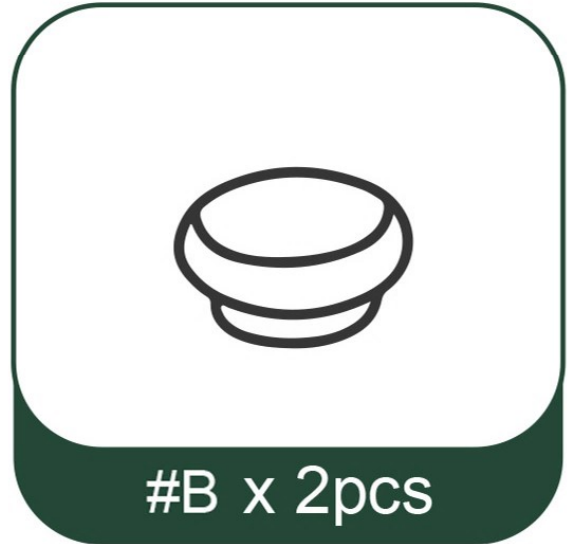


Pivot Wall Mirror

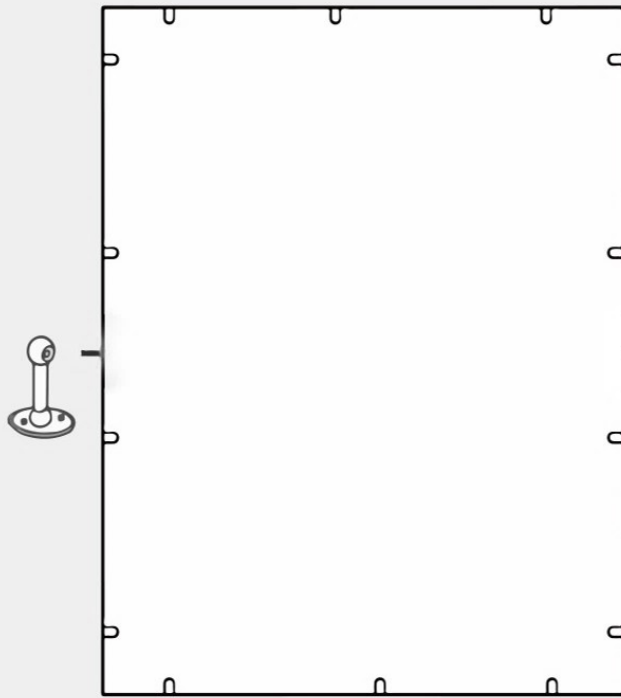
**OPERATING
MANUAL**

01 / Parts List



03 / Installation steps

Step 1



Install wall brackets (#A)
on both sides of the mirror.



Step 2

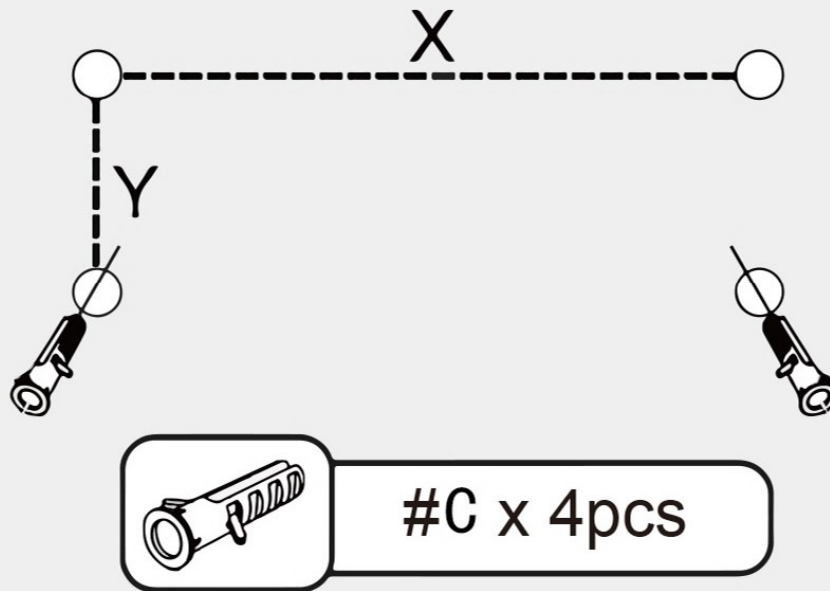


Tighten #B
onto the mirror.



04 / Installation steps

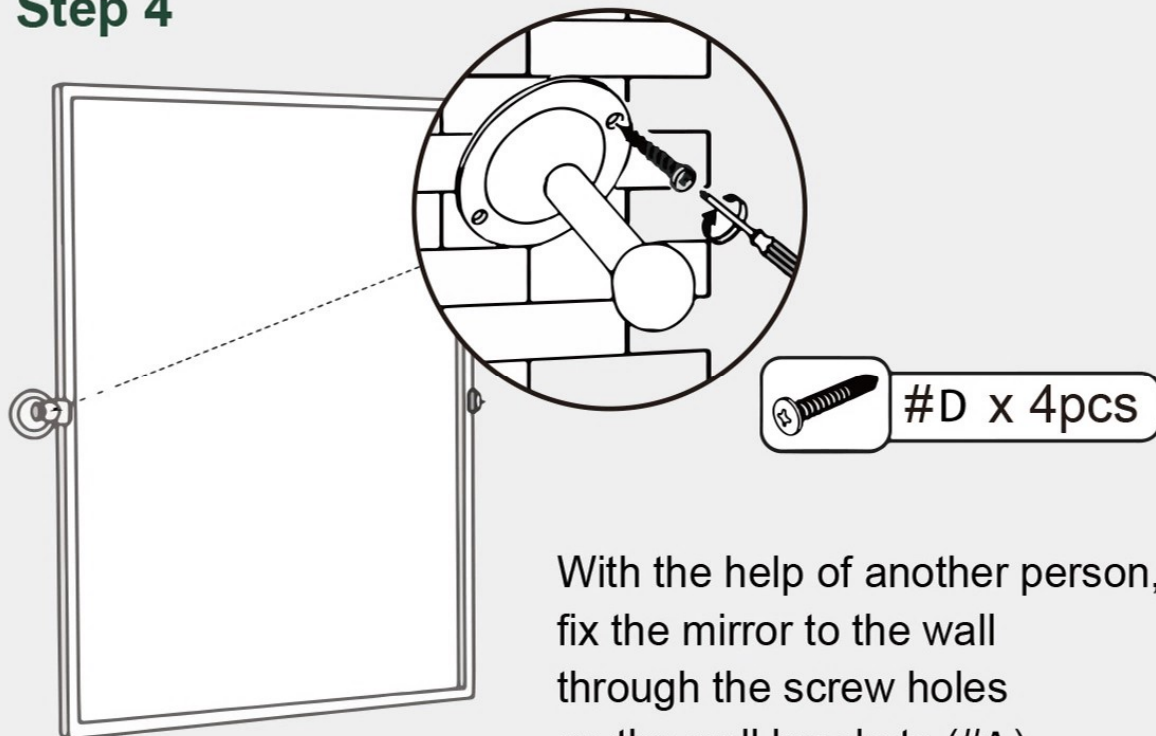
Step 3



Attach the assembled mirror to the wall and measure the distance between the holes on the wall brackets (#A).

Using those measurements, drill corresponding holes in the wall.

Step 4



With the help of another person, fix the mirror to the wall through the screw holes on the wall brackets (#A).