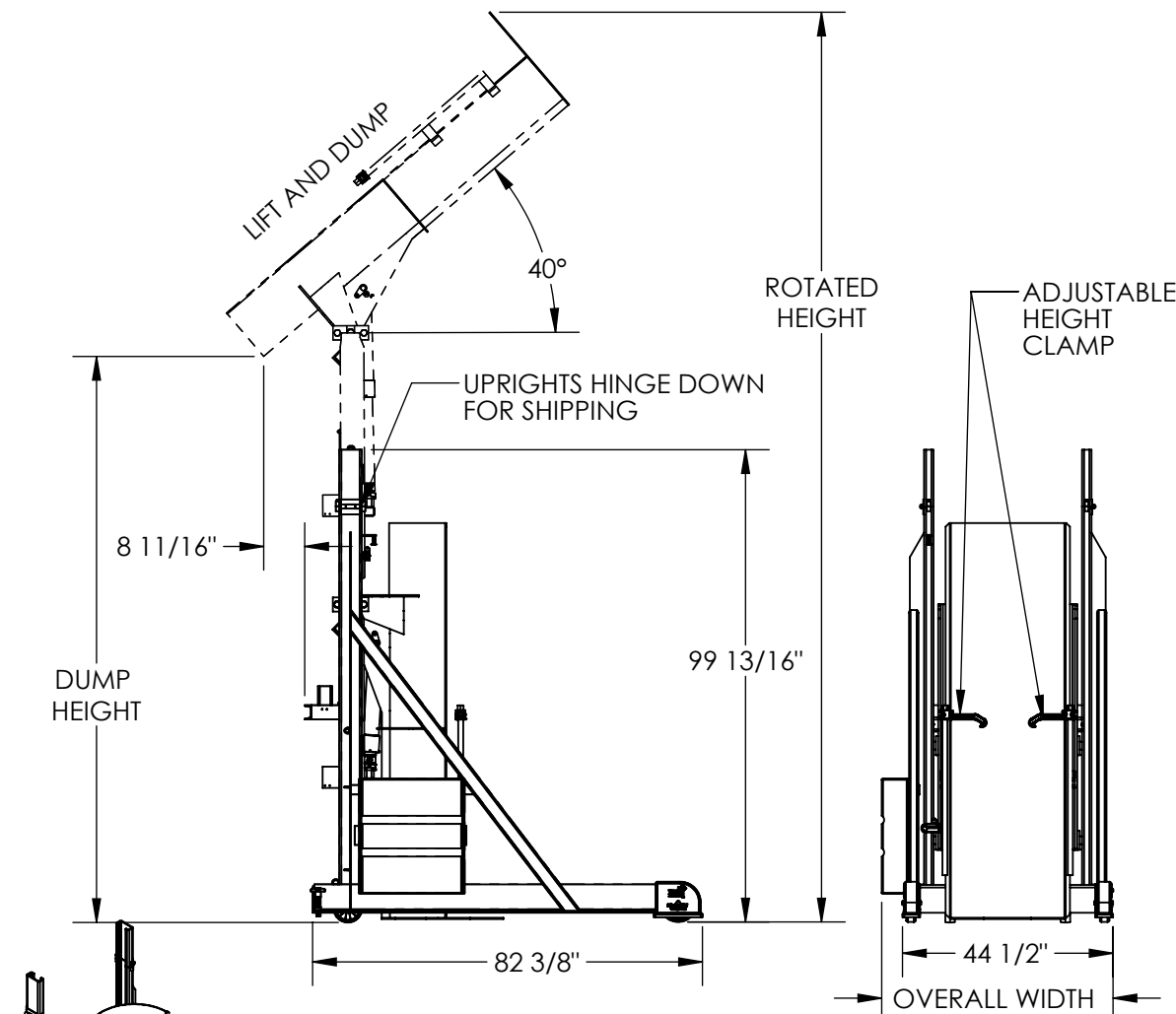


PORTABLE LIFT-AND-DUMP HYDRAULIC DRUM DUMPERS - HLD-116-10-P

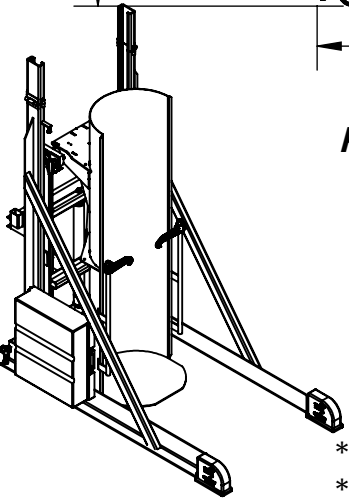
APPROX WEIGHT: 1272.30 lbs.
DOES NOT INCLUDE WEIGHT OF POWER OR PACKAGING!!!

*** ANY ADDITIONS, DELETIONS, OR OMISSIONS MUST BE CORRECTED ON THIS DRAWING AS THIS DRAWING WILL BE CONSIDERED ALL INCLUSIVE ***
ALL GRAPHICS PROVIDED ARE FOR REFERENCE ONLY. IF CERTAIN DIMENSIONS ARE CRITICAL PLEASE VERIFY THOSE DIMENSIONS WITH YOUR SALESPERSON



STANDARD FEATURES
MODEL NUMBER IS HLD-116-10-P
LIFT AND DUMP DESIGN
INDEPENDENT LIFT AND DUMP OPERATION
MAX. DUMP HEIGHT IS 116"
MIN. DUMP HEIGHT IS 60"
OVERALL WIDTH IS 51"
OVERALL LENGTH IS 82 3/8"
LEVEL HEIGHT IS 99 13/16"
ROTATED HEIGHT IS 194"
DUMP ANGLE IS 40°
UNIT IS PORTABLE
MAX CAPACITY IS 1,000 LBS.
WARNING:
CHECK LOCAL AND STATE CODES!
3000 PSI HYD. COMPONENT RATING

SPECIAL FEATURES
NONE



PLEASE CIRCLE SPECIFICATIONS:

POWER	AC	* DC	* AIR/OIL
MOTOR VOLTAGE	115	208	230 460
DEDICATED CIRCUIT REQUIRED			
MOTOR PHASE	SINGLE	THREE	
CONTROL	HAND	* FOOT	
~ ALL BATTERY CHARGERS ARE 115V AC ~			
BATTERY CHRG.	REMOTE	ON-BOARD	
CHRG. INDICATOR	YES	NO	

* AVAILABLE AT ADDITIONAL COST

FOR INTERNAL USE ONLY
PROJECT SIGN OFF

SALES	
ENG.	
FAB.	
POWER	

DIMENSION TOLERANCE ± 1/4"

APPROVAL

I, THE UNDERSIGNED, AGREE THAT THE PRODUCT AS REPRESENTED SATISFIES DESIGN AND DIMENSION REQUIREMENTS. I ALSO ACKNOWLEDGE MY DUTY TO CONFIRM PRODUCT AND INSTALLATION COMPLIANCE WITH ALL APPLICABLE FEDERAL, STATE AND LOCAL REGULATIONS AND STANDARDS.
ANY MODIFIED UNITS ARE NON-RETURNABLE
[] As drawn [] As marked
Signed: _____ Date: _____
Printed Name: _____
LEAD TIME WILL START UPON RECEIPT OF SIGNED APPROVAL DRAWING

DISTRIBUTOR'S NAME:		P.O.#
VESTIL MANUFACTURING		X
DRAWN BY: CA		W.O.#
DATE: 09/02/2011		X
REFERENCE: X	SCALE: 1:40	SALES: X
QUOTED LEAD TIME: X	QUOTE # X	FILE NAME:
		09-007-107