



Lumary

USER MANUAL

MODEL:L-SD4G/6G
LUMARY SMART RECESSED LIGHTING

IMPORTANT SAFETY INSTRUCTIONS

General Safety	<ul style="list-style-type: none">• This product is not waterproof. Avoid contact with water, splashes, or high humidity.• Do not install near heat sources or hazardous objects such as candles or liquid containers.• This product is not a toy. Keep away from children or use under adult supervision.
Electrical Safety	<ul style="list-style-type: none">• Ensure electrical connections comply with local laws and the National Electrical Code (NEC).• Connect only to a 120V 60Hz power supply. Any other connection will void the warranty.• Use minimum 90°C rated supply conductors.• The internal light source is not replaceable. If damaged, the entire unit must be replaced.• Do not connect this lamp to incandescent dimmers or non-specified controls.• Product must be installed by a qualified electrician in accordance with national and local electrical codes.
Installation Warnings	<ul style="list-style-type: none">• Do not turn on power until the light fixture is securely connected to the junction box.• This fixture must be installed in accordance with the type, structure, and dimensions shown in the product documentation.• Ensure the input rating of the fixture does not exceed that of the existing circuit.• Do not drill or modify any electrical enclosures during installation.• Check all components for damage prior to installation. Replace any damaged parts.• Ensure proper grounding of the metal housing.

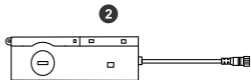
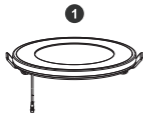
Fire & Shock Hazards

- Risk of fire or electric shock. Improper installation may cause injury or damage.
- Wiring and internal components may be damaged during drilling. Check for enclosed parts before installation.
- To avoid abrasion, do not expose wires to sharp sheet metal edges or cutouts.
- This product must only be used in accordance with local regulations and site suitability.
- This device is not suitable for emergency exits or emergency lighting applications.

Personal Protection

- Knockout edges may be sharp. Always wear protective gloves and safety glasses during installation or maintenance.
- Avoid direct eye exposure to the light source when it is on.
- Wear rubber-soled shoes and use a stable wooden or fiberglass ladder during installation.

PACKAGE CONTENTS

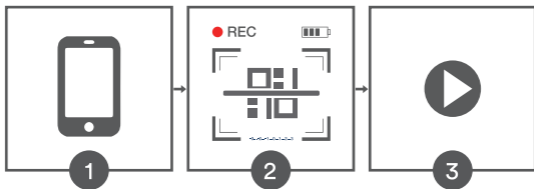


ITEMS PER PACK	QUANTITY
4" or 6" Smart recessed lighting	1
J-Box Driver	1
User Manual	1
Hole Cut-Out Template	1
Installation Kit (Wire Nuts)	1

To ensure a successful Pairing Your Downlight with Lumary App, please prepare the following:

- A Wi-Fi router that supports 2.4GHz (5GHz is not supported).
- A smartphone or tablet running iOS 17 or later, or Android 12 or later.
- Ensure your mobile device is connected to a 2.4GHz Wi-Fi network during setup.
- Download the Lumary App and follow the in-app instructions to complete pairing.

INSTALLATION VIDEO



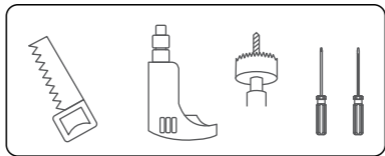
Need a Video Instruction Guide?
Please scan the QR code.

If the QR code is invalid, please contact us for the video.

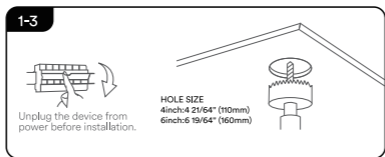
STEP-BY-STEP INSTALLATION

TOOLS REQUIRED:

Saw, Ladder, Screwdriver, Electrical Wiring (The wire should be AWG14-18 for application to connect the fixture), Safety glasses and gloves.



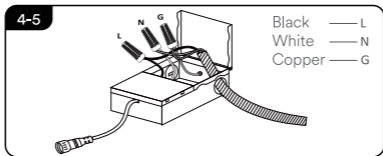
1. Turn off the power at the source before installation.
2. Determine the installation location and mark the center of the cutout using your preferred method. Place the included template on the ceiling and trace the outline using a pencil.
3. Cut a hole in the ceiling using a hand saw or hole saw.



CAUTION: Do not cut a hole larger than the template.
Remove the existing fixture (if applicable) before continuing.

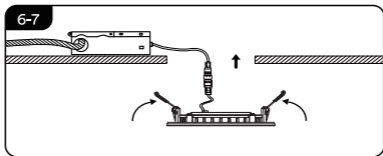
4. Open the J-Box cover. Use a tool to remove the side knockout, then install a suitable cable clamp (not included). Feed the power cable through the clamp.

5. Connect the wires using wire connectors: white to white, black to black, and ground (green or bare copper) to ground. Place the connections inside the J-Box and close the cover securely.



6. Insert the J-Box into the ceiling hole. Connect the fixture's power cable securely to the J-Box.

7. Push the spring clips upward and insert the fixture into the ceiling hole. Release the clips — the fixture will snap into place and sit flush with the ceiling. Turn on the power to check if it functions properly.



Notice:

- Make sure the distance between the devices and the router is less than 100ft.
- Keep as few obstructions (e.g., wall, windows) as possible between the devices and the router.

PARING YOUR DEVICE WITH LUMARY APP

WHAT YOU NEED:

- A Wi-Fi router supporting the 2.4GHz and 802.11b/g/n bands. 5GHz is not supported.
- A smartphone running iOS or Android.



1. Download the "Lumary" App from the App Store or Google Play.
2. Register a Lumary account. (Note: Please select your region and country.)
3. Connect. (NOTE: Lumary's products can't connect to 5GHz networks.)

Steps:

1. Turn on your smartphone's Bluetooth;
2. Open the Lumary App, In the top corner of the Devices screen, click "+" and select "Add Device" to confirm that the device is paired.
3. Each time the device without distribution network is powered on, confirm the light is breathing or blinking pairing mode; If not, you need to use the switch to reset: on-off-on-off-on;
4. Find the device, choose Wi-Fi and enter password, press "Next". Click "Add", and wait patiently. After that, click "Done", and the device is successfully added to the App.

TROUBLESHOOTING

Unable to connect the light to Lumary App

- Ensure the downlight is powered on.
- Check if your smartphone's Wi-Fi is enabled and connected to a 2.4GHz network (5GHz is not supported).
- Keep your smartphone close to the device during the first-time setup.
- Confirm that the Wi-Fi password entered is correct. Make sure the distance between the device and router is less than 50 feet (15 meters).
- If binding fails, try this method: Use two smartphones — one to create a hotspot and the other to connect to the hotspot and add the device via the Lumary App.
- If successful, it may indicate your router settings (MAC filtering or DHCP restrictions) are causing the issue.

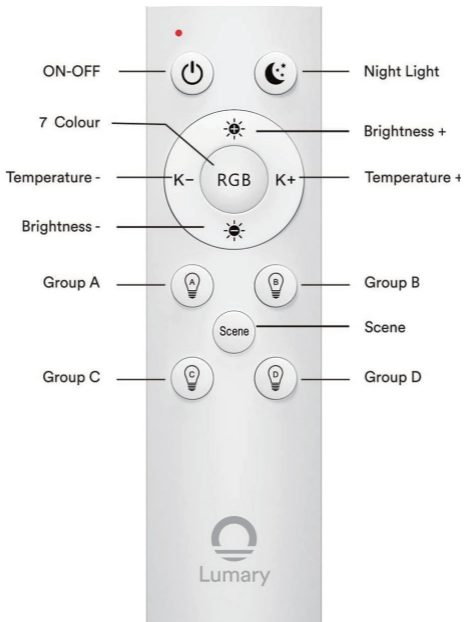
The light lost connection

- Confirm the downlight is still powered on.
- Check if your home Wi-Fi network is stable.
- Try connecting the light to another phone's hotspot to isolate router issues.
- Ensure your smartphone is within 50 feet of the device.
- Delete the device in "My Devices" in the app, then re-add the light by following on-screen instructions.

Can I group multiple Lumary devices together?

- Yes, you can group multiple downlights or Lumary devices using:
 - * Schemes
 - * Same model
 - * General (Wi-Fi or Bluetooth devices)
- Grouping functions depend on device type and firmware version.

REMOTE CONTROL



How to Pair the Remote with Lumary Lights

1. Connect Lights to the App Before using the remote, connect your lights to 2.4GHz Wi-Fi through the Lumary App.
2. Enter Pairing Mode Turn off the lights using the wall switch, wait 5 seconds, then turn them on again. The lights will enter pairing mode within 1 minute after powering on.
3. Pair and Group with the Remote Press and hold any group button (A / B / C / D) based on your preference. When the light blinks, pairing is successful.
If some lights don't respond, hold the same button again to pair them.







Note: If the device times out or doesn't pair successfully, repeat Step 2 to re-enter pairing mode.

How to unpair the Remote with Lumary Lights

1. To unpair a light from a group, press and hold the "Brightness –" button and the group button (A / B / C / D) you originally used for pairing.
2. Hold for 3 seconds until the light blinks — this means the unpairing is successful.

Note: Use the same group button that was used during the original pairing.

ADDITIONAL FEATURES

	<p>Adjustable Brightness & Color Temp 2700K-6500K, 0-100% Dimming Wake up to energizing cool light (6500K) for morning productivity. Wind down with warm amber (2700K) for cozy movie nights—no extra lamps needed.</p>
	<p>RGB Mode Transform your space instantly: vibrant rainbow for parties, soothing purple for yoga, or cinematic blue for Netflix marathons. Ditch boring single-color bulbs.</p>
	<p>Smart Timer Auto-off lights at bedtime to save energy. Simulate sunrise to wake up gently—no more jarring alarms or wasted electricity.</p>
	<p>Music Rhythm Sync Lights dance to your playlist! Throw a TikTok-worthy dance party or sync with white noise for meditation—your room becomes an extension of the vibe.</p>
	<p>Voice Control (Alexa/Google) "Alexa, dim the lights!" Control hands-free while cooking, working, or carrying groceries. Check lights remotely on vacation—peace of mind unlocked.</p>
	<p>Preset Scene & DIY Modes 34+ preset scene mode, easily set the mood at a tap of the button.</p>

PARAMETER INFORMATION

Name	Lumary Smart Recessed Lighting
Model	L-SD4G1 L-SD6G1
Input Voltage	120VAC,60Hz
Wattage	9W/13W (Down) subject to actual conditions
Color Temperature	RGB +Tunable White(2700K-6500K)
CRI	90+
Lumens	780lm/1100lm
Beam Angle	110°
Rated Life	25000h



Contains FCC ID:2ANDL-CBU

Made in China



How to Connect Lumary Device to Alexa

1. Open the Lumary App, select your smart device, and tap the "✎" in the top right corner.
2. Go to "Third-party Control", then tap "Alexa".
3. Tap "Sign In with Amazon" and log in to your Amazon account.
4. Tap "Allow" to authorize the connection.
5. Once linked, you can use Alexa voice commands to control your Lumary device.
6. When adding new devices in the future, simply discover them via Alexa — no need to link again.

Name and Control Each Device by Voice

Alexa will automatically sync the names you set for your devices in the Lumary app. You can also rename the lights in the Alexa app to simplify voice commands.

To control your Lumary smart devices, just ask Alexa. Make sure your devices are already set up using the Lumary app.

Sample Voice Commands:

"Alexa, discover my devices."

"Alexa, turn on the bedroom light."

"Alexa, set the bedroom light to orange."

"Alexa, set the living room light to 50%."

"Alexa, dim the porch light."

Note: Some commands require compatible devices.



How to Connect Lumary Device to Google Assistant

1. Open the Lumary App, select your smart device, and tap the "✎" in the top right corner.
2. Go to "Third-party Control", then tap "Google Assistant".
3. Tap "Link with Google Assistant" and log in to your Google account.
4. Tap "Agree and link" to authorize the connection.
5. Once linked, you can use Google Assistant voice commands to control your Lumary device.
6. When adding new devices in the future, simply discover them via the Google Home app — no need to link again.

Name and Control Each Device by Voice

Google Assistant will automatically sync the names you set for your devices in the Lumary app. You can also rename the lights in the Google Home app to simplify voice commands.

To control your Lumary smart devices, just ask Google Assistant. Make sure your devices are already set up using the Lumary app.

Sample Voice Commands:

"Hey Google, discover my devices."

"Hey Google, turn on the bedroom light."

"Hey Google, set the bedroom light to orange."

"Hey Google, set the living room light to 50%."

"Hey Google, dim the porch light."

Note: Some commands require compatible devices.

FCC STATEMENT

This device complies with Part 15 of the FCC Rules. Operation is subject to the following two conditions:

(1) this device may not cause harmful interference.

(2) this device must accept any interference received, including interference that may cause undesired operation. Changes or modifications not expressly approved by the party responsible for compliance could void the user's authority to operate the equipment.

NOTE: This equipment has been tested and found to comply with the limits for a Class B digital device, pursuant to part 15 of the FCC Rules. These limits are designed to provide reasonable protection against harmful interference in a residential installation. This equipment generates uses and can radiate radio frequency energy and, if not installed and used in accordance with the instructions, may cause harmful interference to radio communications. However, there is no guarantee that interference will not occur in a particular installation. If this equipment does cause harmful interference to radio or television reception, which can be determined by turning the equipment off and on, the user is encouraged to try to correct the interference by one or more of the following measures:

- Reorient or relocate the receiving antenna.
- Increase the separation between the equipment and receiver.
- Connect the equipment into an outlet on a circuit different from that to which the receiver is connected.
- Consult the dealer or an experienced radio/TV technician for help.

24

HOURS
Quick Response

Quick Response

If there is any problem please check the Troubleshooting page . When you could not fix this, please contact us after-sale email, we will respond within 24 hours.

Please attach the video of the problem and order ID to support@lumary.tech.

30

DAYS
Hassle-Free

Hassle-Free

After the purchase, if there any quality with devices, we can offer free return or replacement.

**2-YEAR
WARRANTY**



Friendly Reminder

Please rest assured that our service aim is to make customers 100% satisfied.

If there is any problem, please contact us as soon as possible, we will not let you down.

Can't connect? Need help?



HAVING AN EASY TALK TO US BEFORE YOU RETURN
THE PRODUCT WILL FIX A PROBLEM MORE QUICKLY

Lumary support:

support@Lumary.tech

Visit us at:

www.lumary.tech

www.lumarysmart.com