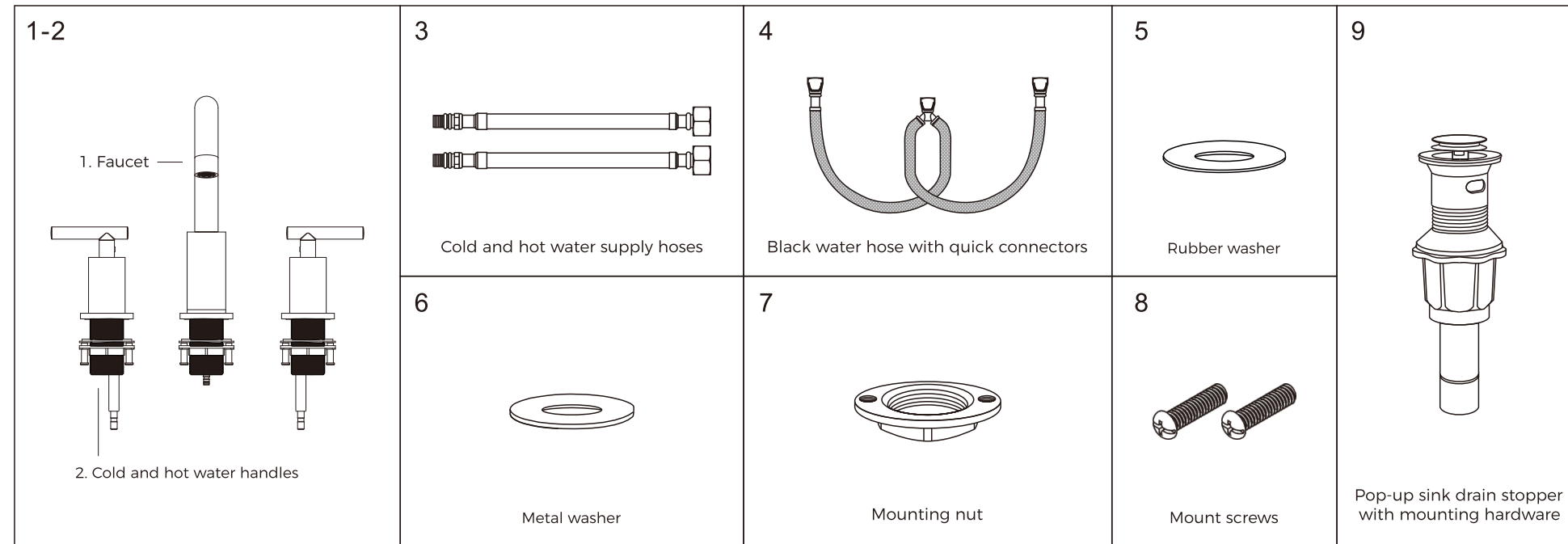
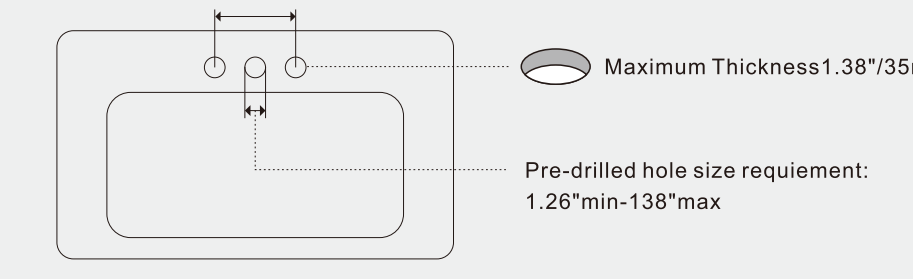




INSTALLATION INSTRUCTIONS



Recommend 6"-12" centerset width



Maximum Thickness 1.38"/35mm

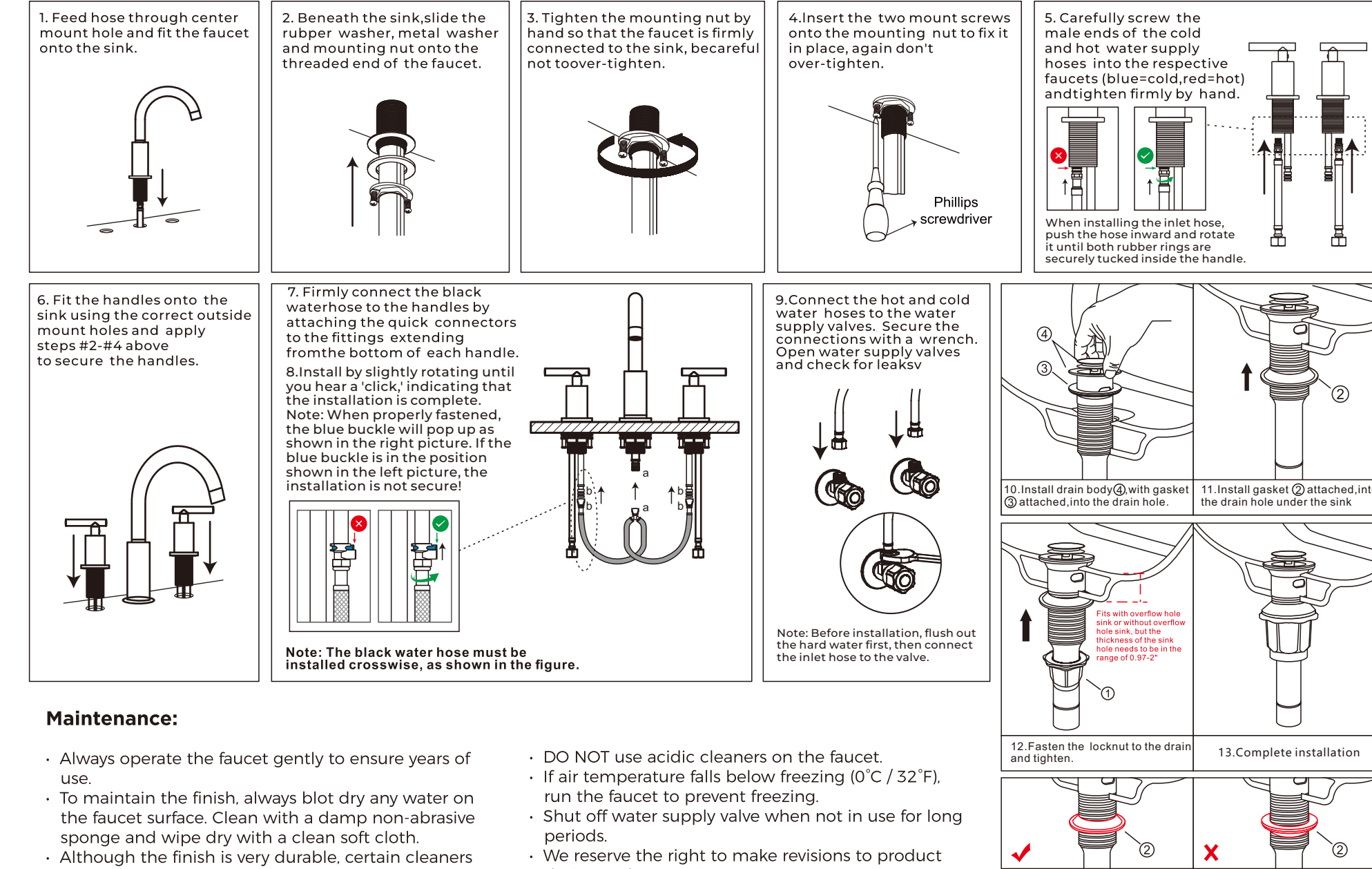
Pre-drilled hole size requirement: 1.26"min-1.38"max

Before Installation:

- Turn off the water supply valves. Clean the mounting area of the sink.
- Recommended width of mounting area is between 15cm-31cm (6"-12") measured between centers of outside mount holes as shown in the diagram.
- Diameter of mount holes must be between 32mm-35mm (1.26"-1.38") as shown in the diagram.
- Max countertop thickness is 35mm (1.38")
- Water pressure Min 0.05MPa (7 psi) / Max 0.75MPa (109 psi)
- Water temp Min ≥ 20°C (68°F) / Max ≤ 85°C (185°F)

www.furious.com

Installation Steps:



service@furious.com