

VIVOHOME

THANK YOU!

NOTE:

To continuously improve its products, VIVOHOME reserves the right to modify this information without prior notification.

For any questions regarding assembly, please watch the video on the product page or contact our customer service. Our customer service will gladly assist you with any additional questions, comments, or concerns.

Thank you for using VIVOHOME products in your home!

Thank You for Purchasing from

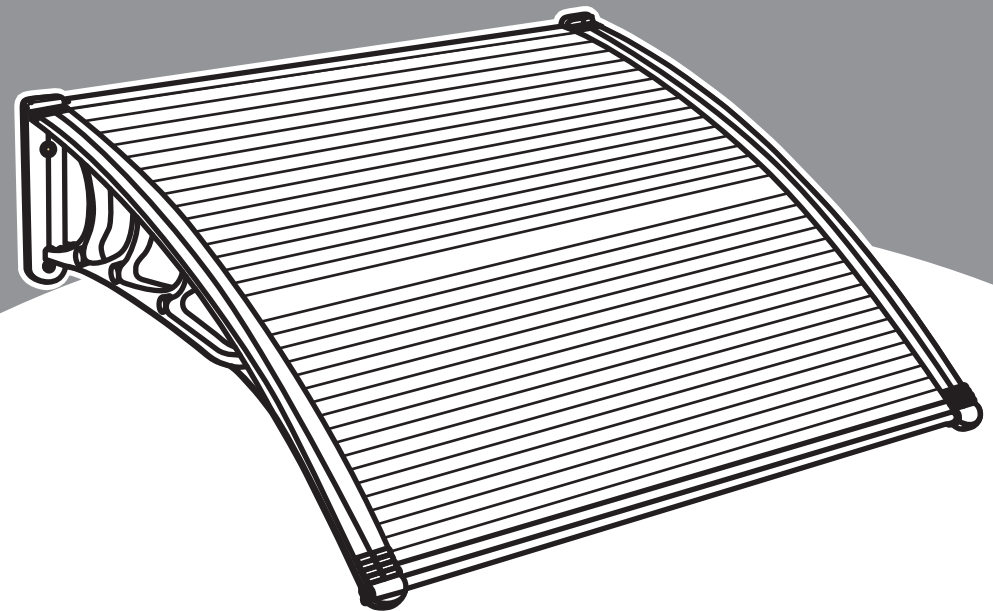
VIVOHOME

Made in China

VIVOHOME

HOW-TO

USER MANUAL



Polycarbonate Door Awning
40 Inch x 40 Inch

Assembly is EASY!

**WE WANT
YOU TO
ENJOY LIFE
AT HOME**

GO TO THE PRODUCT LISTING PAGE FOR
AN INSTRUCTIONAL VIDEO!

CONTENTS

Before You Start	1
Parts List and Diagram	1
Assembly Steps	3
Return/Damage Claim Instructions	7
Warranty	8

SECTION A

Before You Start



1. Please read all instructions carefully.
2. Retain instructions for future reference.
3. Separate and count all parts and hardware.
4. Read through each step carefully and follow the proper order.
5. We recommend that, where possible, all items are assembled near to the area in which they will be placed in use, to avoid moving the product unnecessarily once assembled.
6. Always place the product on a flat, steady and stable surface.
7. Keep all small parts and packaging materials for this product away from babies and children as they potentially pose a serious choking hazard.

SECTION B

Parts List and Diagram



Item No.	Reference Image	Qty.
A		x2
C		x1

Item No.	Reference Image	Qty.
B		x2
D		x1

SECTION B

Parts List and Diagram

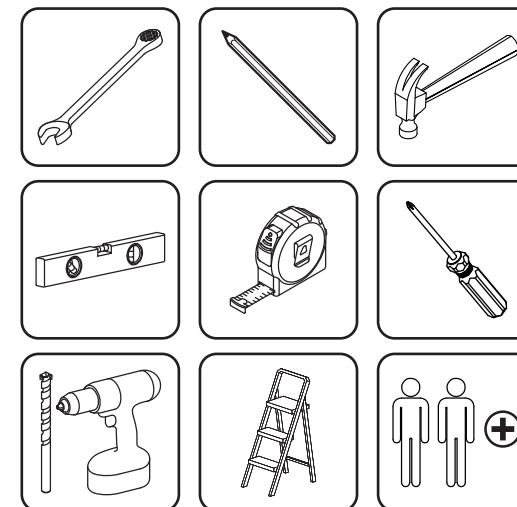


Item No.	Reference Image	Qty.
E		x1
G	 M4*16 +1(spare)	x6

Item No.	Reference Image	Qty.
F	 M4*35	x4
H		x4

Tools Recommended

Do not confuse similar screws.

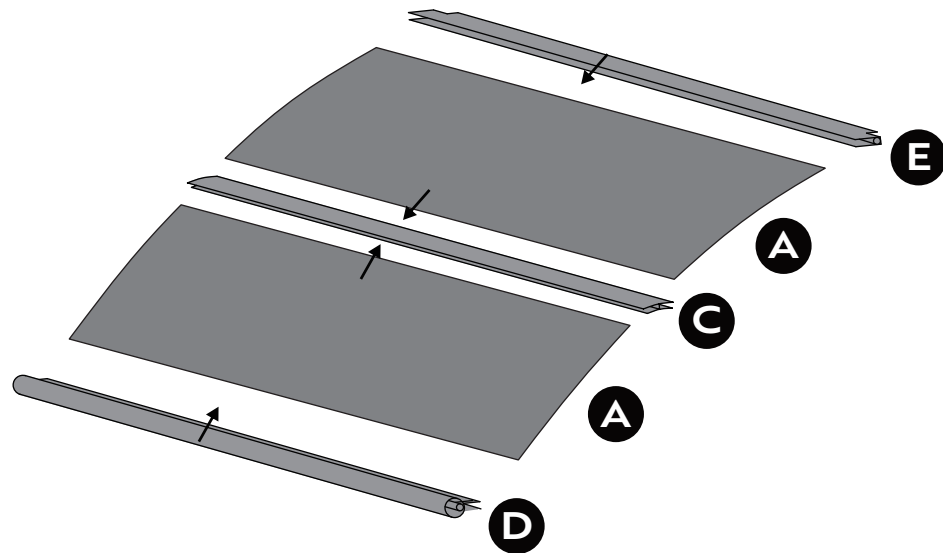


Assembly Steps



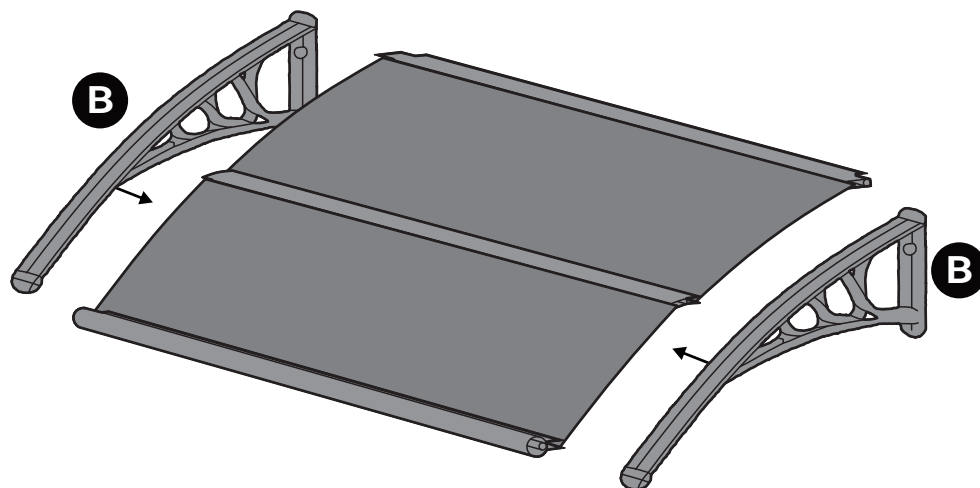
STEP 1

A x 2 pcs. **C** x 1 pc. **D** x 1 pc. **E** x 1 pc.



STEP 2

B x 2 pcs.

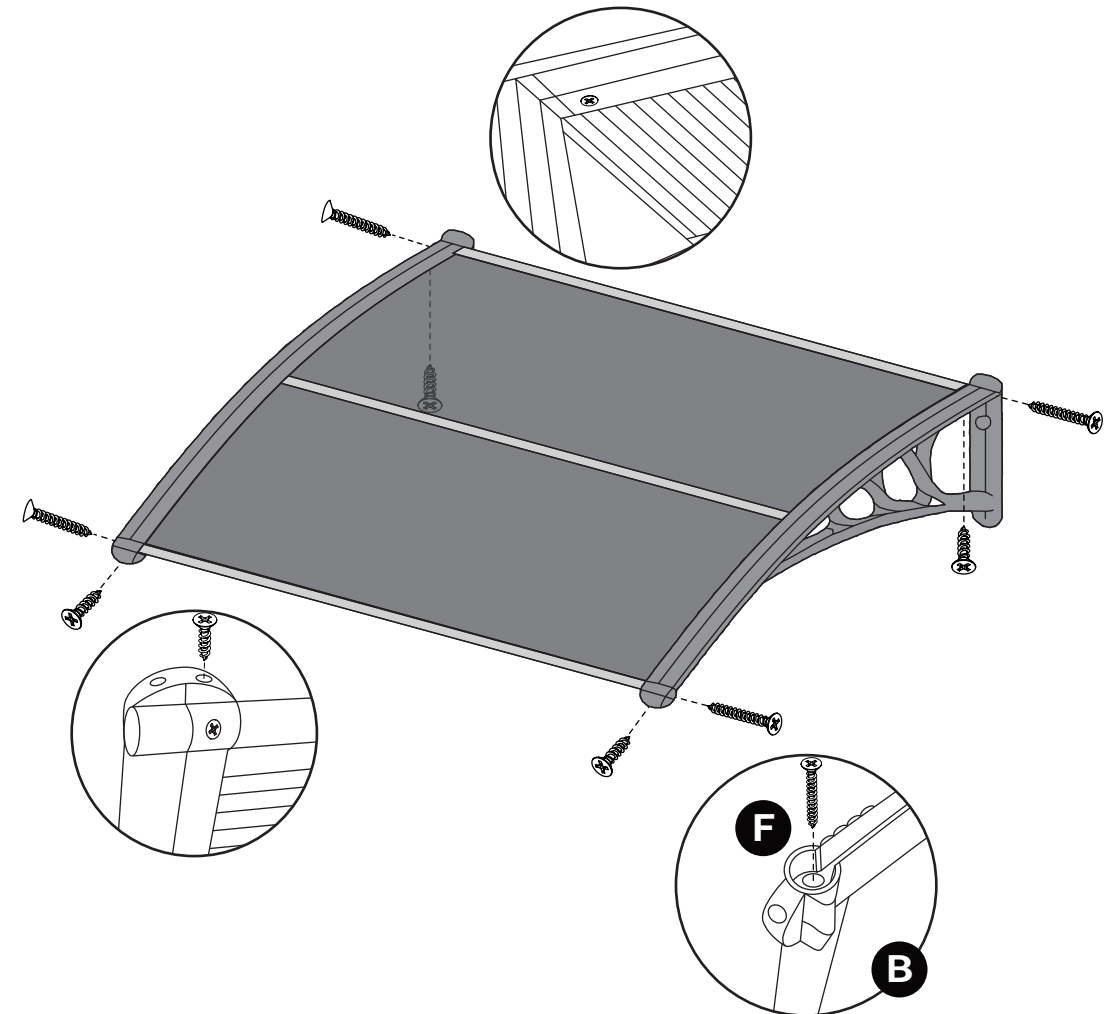


Assembly Steps



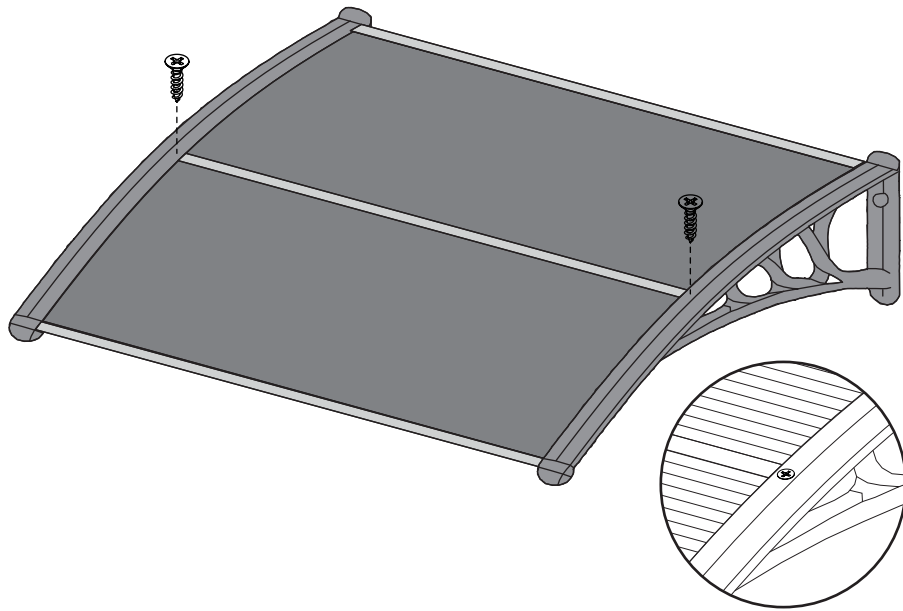
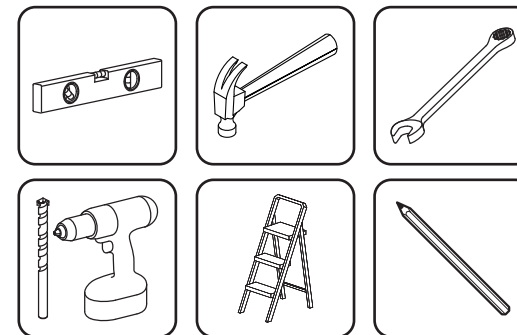
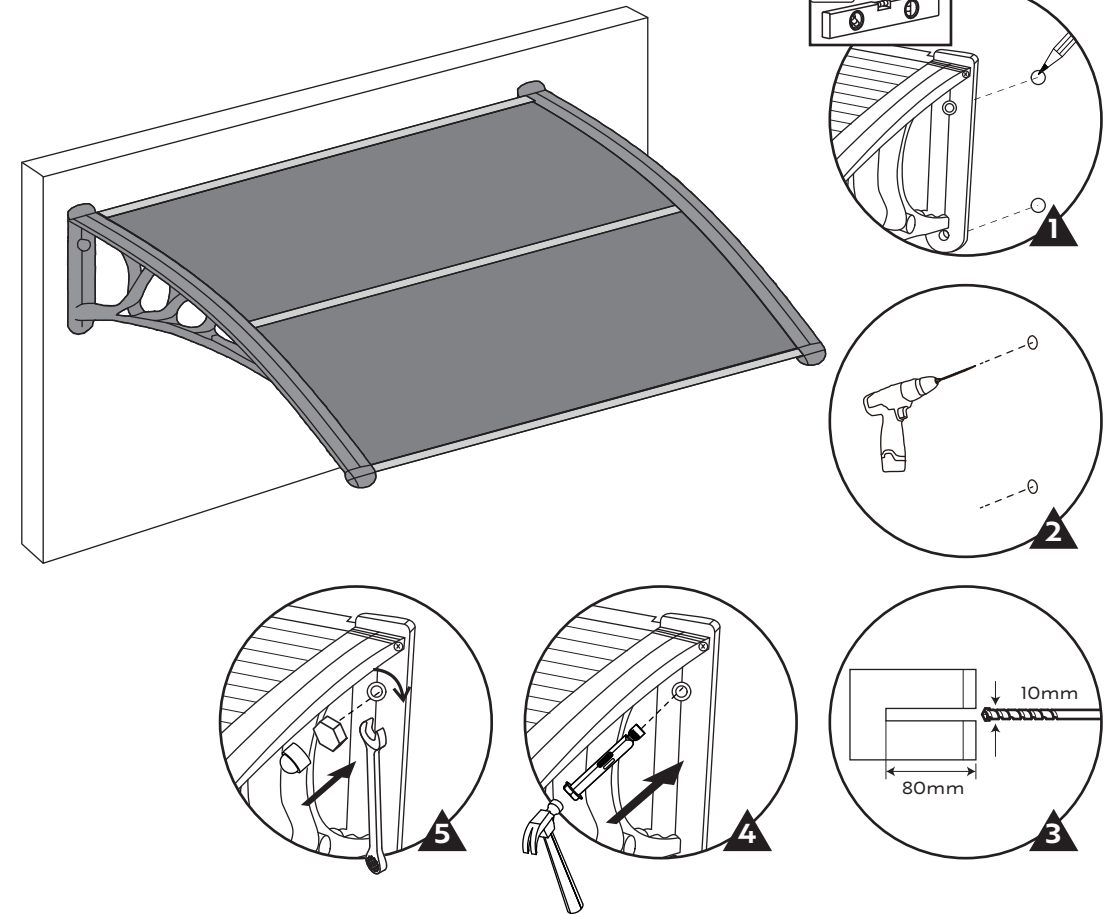
STEP 3

F x 4 pcs. **G** x 4 pcs.




STEP 4 **G** x 2 pcs.

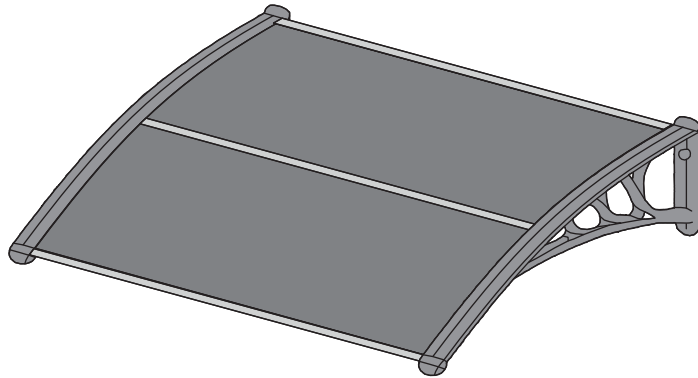
G screws are optional


STEP 5 **H** x 4 pcs.




STEP 6

Done



1. **DO NOT** discard the box I original packaging.
In case a return is required, the item must be returned in original box. Without this your return will not be accepted.
2. **Take a photo of the box markings.**
A photo of the markings (text) on the side of the box is required in case a part is needed for replacement. This helps our staff identify your product number to ensure you receive the correct parts.
3. **Take a photo of the damaged part (if applicable).**
A photo of the damage is always required to file a claim and get your replacement or refund processed quickly. Please make sure you have the box even if it is damaged.
4. **Send us an email with the images requested.**
Email us directly from marketplace where your item was purchased with the attached images and a description of your claim.



The VIVOHOME warranty program is our commitment to you. We are committed to providing you with a high-quality product that meets your needs and expectations. To demonstrate our confidence in the durability and performance of our products, we offer the following warranty.

WARRANTY COVERAGE

This warranty program applies to any orders, purchases, receipts, or use of any products sold by VIVOHOME and is valid for a period of 1 year from the date of purchase. However, please note that this warranty period is only valid for the original order. If you receive a replacement order during the warranty period, it will not include a separate warranty period.

WARRANTY EXCLUSIONS

This warranty does not cover damage resulting from misuse, accident, unauthorized modification, or any other circumstances not directly related to the manufacturing and design of the product, including but not limited to:

- Parts lost during use.
- Normal wear and tear of products or parts.
- Incorrect installation (such as using the wrong voltage) or assembly.
- Exceeding the bearing capacity of the product.
- Use under extremely harsh conditions.

- Improper cleaning or maintenance.
- Damage caused by any reason other than the intended use of the product.
- Indirect loss or damage caused by the product.

HOW TO MAKE A WARRANTY CLAIM

If you find any defects that affect the use of the product or if the product stops working and cannot be repaired during the warranty period, please contact our customer service team at our email or via Amazon & app's direct messaging service as soon as possible. Provide the following information to expedite the process:

- Order number
- Images and/or videos illustrating the issue
- A detailed description of the problem

VIVOHOME will provide technical support, replacement, refund, or other solutions based on the nature of the issue. If you wish to return the original package for any reason, please contact us for confirmation before proceeding. You can expect to receive a response within 48 hours.

Thank you for choosing VIVOHOME. We are committed to ensuring the quality and satisfaction of your purchase. If you have any questions or need assistance, please do not hesitate to contact our customer service team.

Warning

1. Read each step carefully and follow the correct order. Always place the product on a flat, firm and stable surface for installation.
2. Keep all small parts and packaging materials of this product away from infants and children as they may pose a serious choking hazard.

Avertissement

1. Lisez chaque étape attentivement et suivez l'ordre correct. Placez toujours le produit sur une surface plane, ferme et stable pour l'installation.
2. Gardez toutes les petites pièces et les matériaux d'emballage de ce produit hors de portée des nourrissons et des enfants, car ils peuvent présenter un risque sérieux d'étouffement.

Warnung

1. Lesen Sie jeden Schritt sorgfältig durch und folgen Sie der richtigen Reihenfolge. Stellen Sie das Produkt immer auf eine flache, feste und stabile Fläche zur Installation.
2. Halten Sie alle kleinen Teile und Verpackungsmaterialien dieses Produkts von Säuglingen und Kindern fern, da sie eine ernsthafte Erstickengefahr darstellen können.

Avvertenza

1. Leggi attentamente ogni passaggio e segui l'ordine corretto. Colloca sempre il prodotto su una superficie piana, solida e stabile per l'installazione.
2. Tieni tutte le piccole parti e i materiali di imballaggio di questo prodotto lontani da neonati e bambini, in quanto potrebbero costituire un grave rischio di soffocamento.

Advertencia

1. Lea cada paso cuidadosamente y siga el orden correcto. Siempre coloque el producto sobre una superficie plana, firme y estable para la instalación.
2. Mantenga todas las piezas pequeñas y los materiales de embalaje de este producto alejados de los bebés y niños, ya que pueden representar un grave riesgo de asfixia.

Waarschuwing

1. Lees elke stap zorgvuldig door en volg de juiste volgorde. Plaats het product altijd op een vlakke, stevige en stabiele ondergrond voor installatie.
2. Houd alle kleine onderdelen en verpakkingsmaterialen van dit product uit de buurt van baby's en kinderen, omdat ze een ernstig verstikkingsgevaar kunnen vormen.