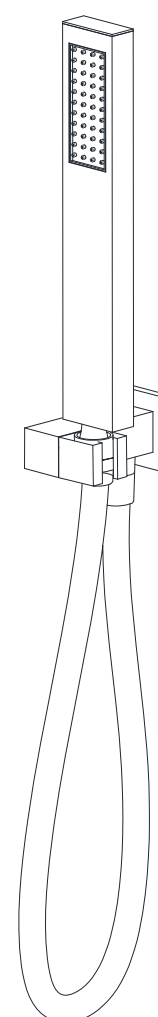
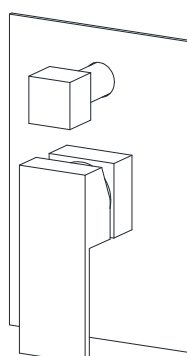
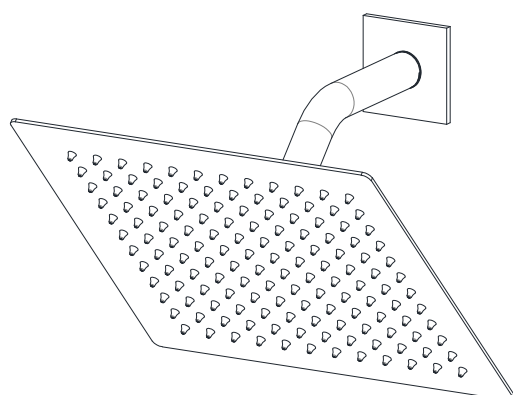


INSTALLATION GUIDE



SHOWER SYSTEM

MODEL	FINISH
S3218IB-CH	CHROME
S3218IB-BN	BRUSHED NICKEL
S3218IB-MB	MATTE BLACK
S3218IB-BG	BRUSHED GOLD

HOT LINE: +1-866-203-0866

THANK YOU

Dear Valued Customer,

Thank you for choosing SUMERAIN products. We sincerely appreciate your recent purchase and hope you are fully satisfied with your new product. At SUMERAIN, all our products are meticulously designed, engineered, and rigorously tested to ensure long-lasting, trouble-free performance under normal conditions.

Installation is simple with basic tools and our step-by-step illustrated guide. We welcome your questions or feedback and look forward to assisting you in the future. For any inquiries, please contact us at +1-866-203-0866 or email us at [support@sumerain.com](mailto:supports@sumerain.com).

Thank you again for selecting SUMERAIN. We remain dedicated to providing exceptional customer service.

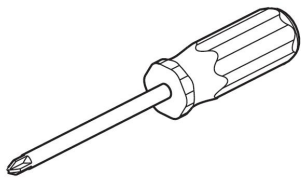
Sincerely,

SUMERAIN Customer Service Department.

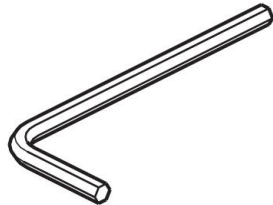
BEFORE PROCEEDING

1. Unpack the product and ensure all components are included in the package. Keep the product in its original packaging until you are ready to install it to prevent damage.
2. Locate the water supply inlets and turn off the water supply valves, which are typically near the water meter or under the sink. If replacing an existing unit, remove the old one and thoroughly clean the mounting surface.
3. Follow all applicable local and state plumbing and building codes to ensure proper installation.
4. If you are uncertain about the installation process, we strongly recommend consulting a professional to avoid potential issues.

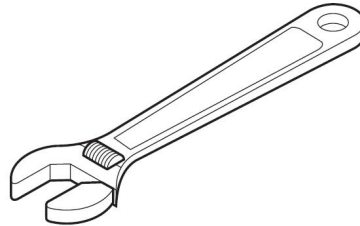
TOOLS RECOMMENDED



Philips Screwdriver



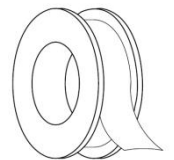
Allen Wrench



Adjustable Wrench



Channel Locks

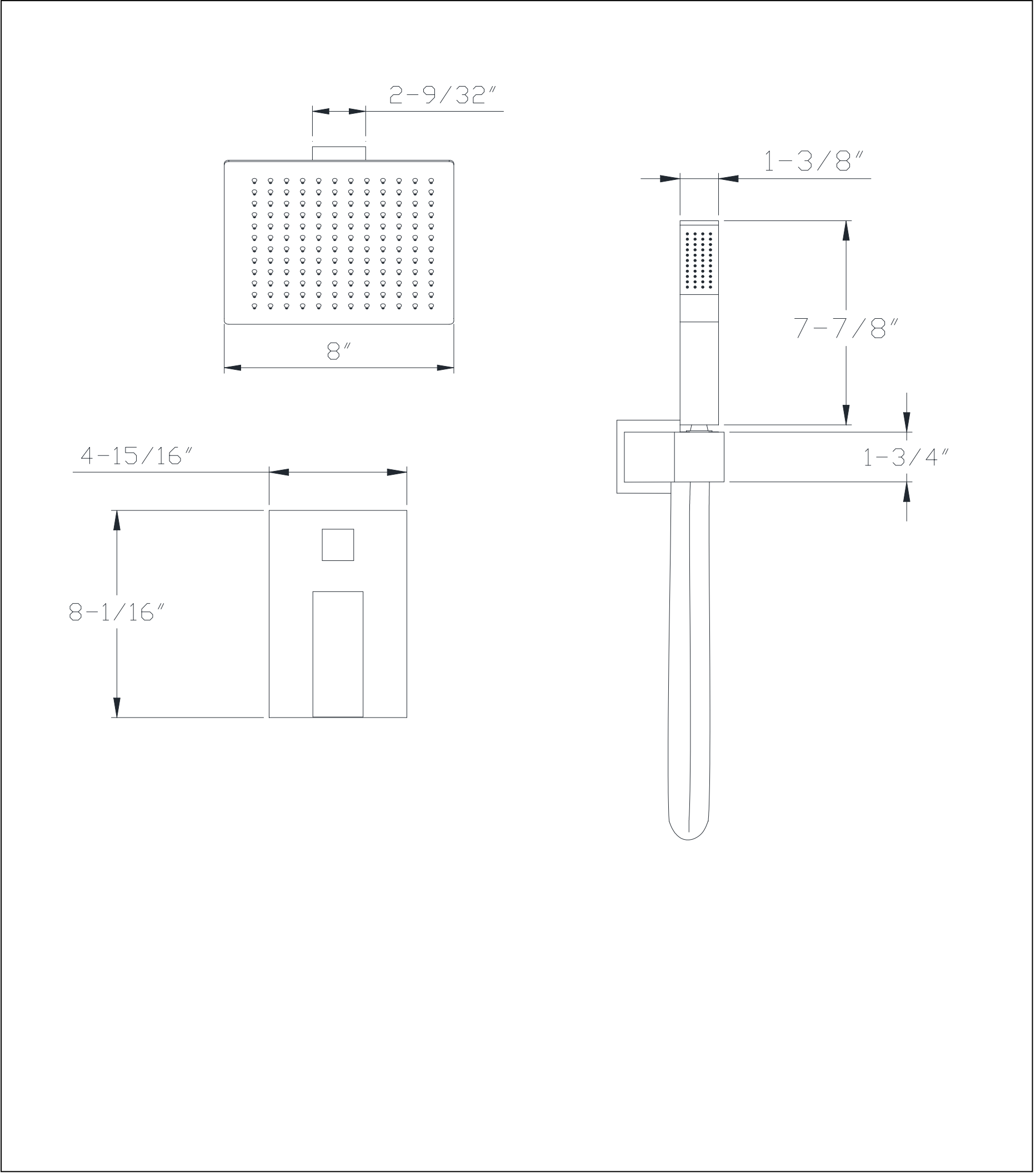


Teflon Tape

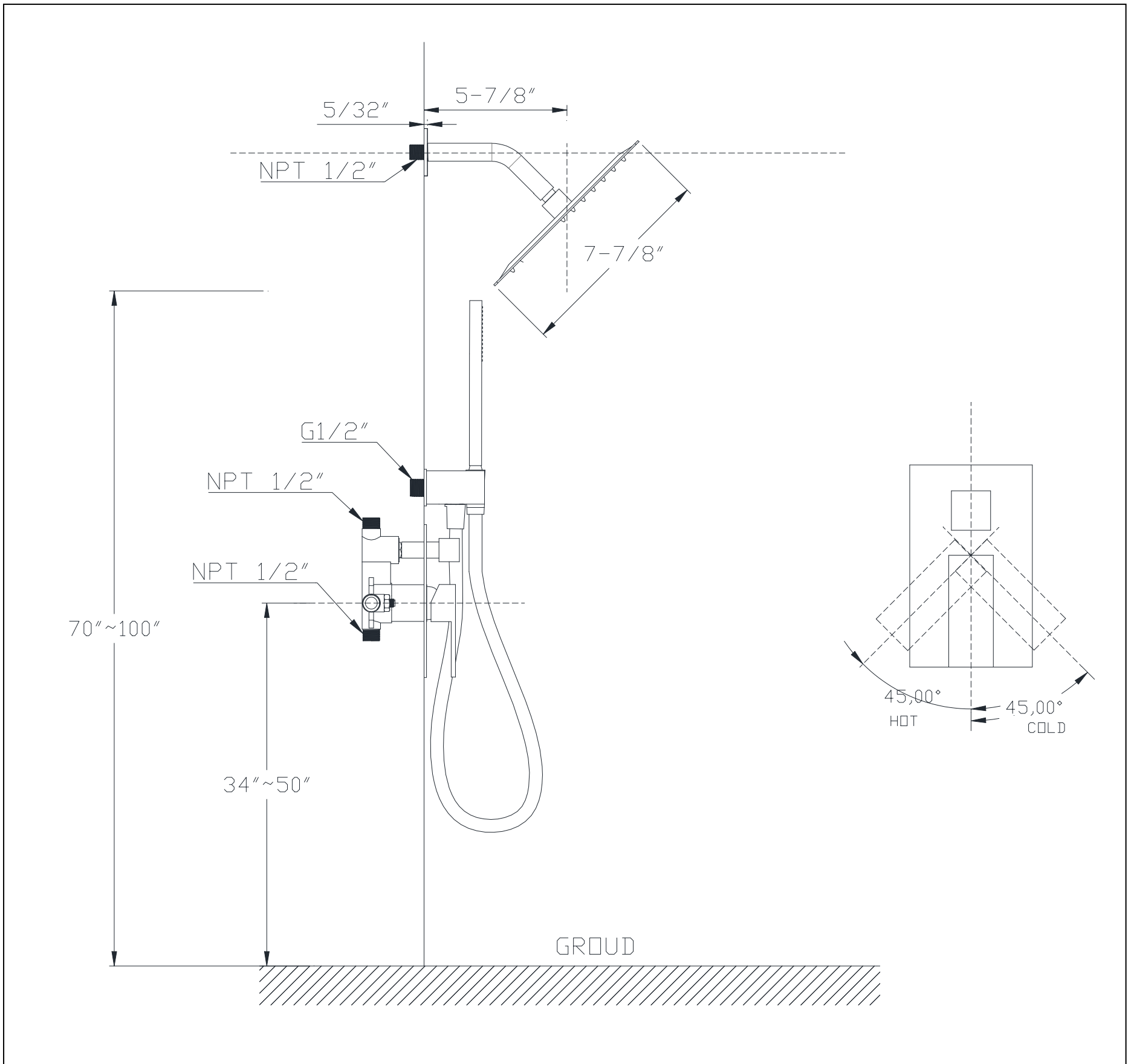
FUNCTIONS AND SPECIFICATION

Faucet Type	Shower System
Feature	Concealed Shower Faucet
Theme	Modern, Contemporary
Mounting Type	Wall Mount
Number Of Handles	One
Handles Material	Metal
Handle Style	Lever
Shower Arm Reach	5-7/8"
Showerhead Width	8"
Showerhead Length	8"
Valve Type	Pressure Balance Cartridge
Faucet Body Material	Brass
Escutcheon Material	Stainless Steel
Diverter Included	Yes
Diverter Location	Rough-in Valve
Showerhead Type	Rain Shower
Showerhead Shape	Ultra-thin Square
Showerhead Function	Single Function
Showerhead Material	Stainless Steel
Showerhead Flow Rate	1.8 GPM @60PSI
Hand Shower Flow Rate	1.8 GPM @60PSI
Elbow Material	Brass
Hand Shower Holder Material	Brass
Hand Shower Material	Brass
Hand Shower Height	7-7/8"
Hand Shower Width	1-3/8"
Net Weight	8.05 lbs
Gross Weight	9.41 lbs
Packing Box [L x W x H]	11-1/4" x 10-13/16" x7-7/8"

DIMENSION



FRONT VIEW OF SHOWER



SIDE VIEW OF SHOWER

INSTALLATION STEPS

1. BEFORE PROCEEDING



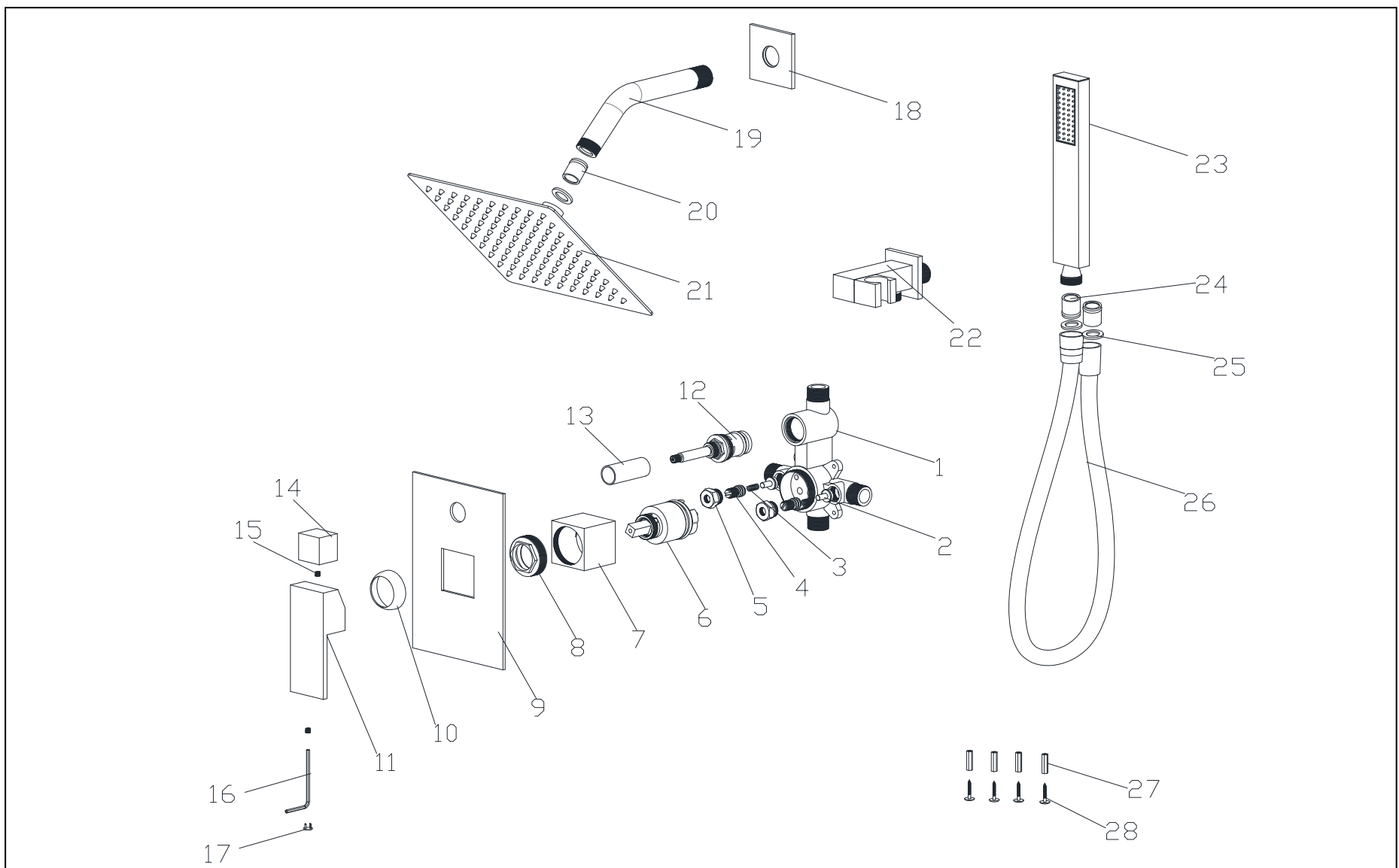
WARNING: Before beginning any installation or operation, read all instructions carefully. If you are unsure about installing this product, consult a licensed professional. This product must be installed in compliance with all applicable local and state plumbing and building codes. Professional assistance is strongly recommended.

2. SHUT OFF WATER SUPPLY

Locate the water supply inlets and turn off the corresponding water supply valves, typically located under the sink or near the water meter. If replacing an existing unit, remove the old unit and thoroughly clean the mounting surface to ensure proper installation.

3. CHECKING THE CONTENTS OF THE BOX

Upon opening the box, verify that all the listed components are included.



NO	ITEM NAME	MATERIAL	QTY	PART NO.	NO	ITEM NAME	MATERIAL	QTY	PART NO.
1	Rough-In Valve	HPB59-1	1	PVB32260PB	15	Set Screw	SUS304	2	PSC05050XX
2	Check Valve	HPB59-1	2	PSA32100PB	16	Allen Wrench 2.5mm	Fe45#	1	PSA00003XX
3	Spring	SUS304	2	PSA32101XX	17	Screw Cover	ABS	1	PSA00002XX
4	Check Valve Screw	HPB59-1	2	PSC32100PB	18	Shower Arm Flange	Zn alloy No.3	1	PFC00003XX
5	Bonnet Nut	HPB59-1	2	PNT32100XX	19	Shower Arm	SUS304	1	PPI32181XX
6	Pressure Balance Cartridge	ASSEMBLE	1	PCT40011XX	20	Flow Restrictor	ASSEMBLE	2	PAE00044XX
7	Sleeve	HPB59-1	1	PSL32180XX	21	Shower Head	ASSEMBLE	1	PTR00001XX
8	Bonnet	HPB59-1	1	PSC42125PB	22	Hand Shower Water Supply Holder	ASSEMBLE	1	PHH00003XX
9	Escutcheon	SUS304	1	PCP32180XX	23	Handheld Shower	ASSEMBLE	1	PHS00002XX
10	Bonnet Cap	HPB59-1	1	PFC42125XX	24	Flow Restrictor	ASSEMBLE	1	PAE00043XX
11	Handle(lever)	Zn alloy No.3	1	PHD00008XX	25	Rubber Washer	NBR	3	PRW19020XX
12	Diverter Cartridge	ASSEMBLE	1	PCT00001XX	26	Shower Hose	ASSEMBLE	1	PFH00010XX
13	Diverter Sleeve	HPB59-1	1	PSL32181XX	27	Anchor	ABS	4	PSA00010XX
14	Diverter Knob	Zn alloy No.3	1	PHD31285XX	28	Mounting Screw	SUS304	4	PSC00002XX

If any of these items are missing, please contact SUMERAIN consumer service by email to: supports@sumerain.com

4. PLANNING AND INSTALLATION INSTRUCTIONS



Attention: The shower system must be installed, flushed, and inspected in compliance with applicable regulations to ensure optimal performance.

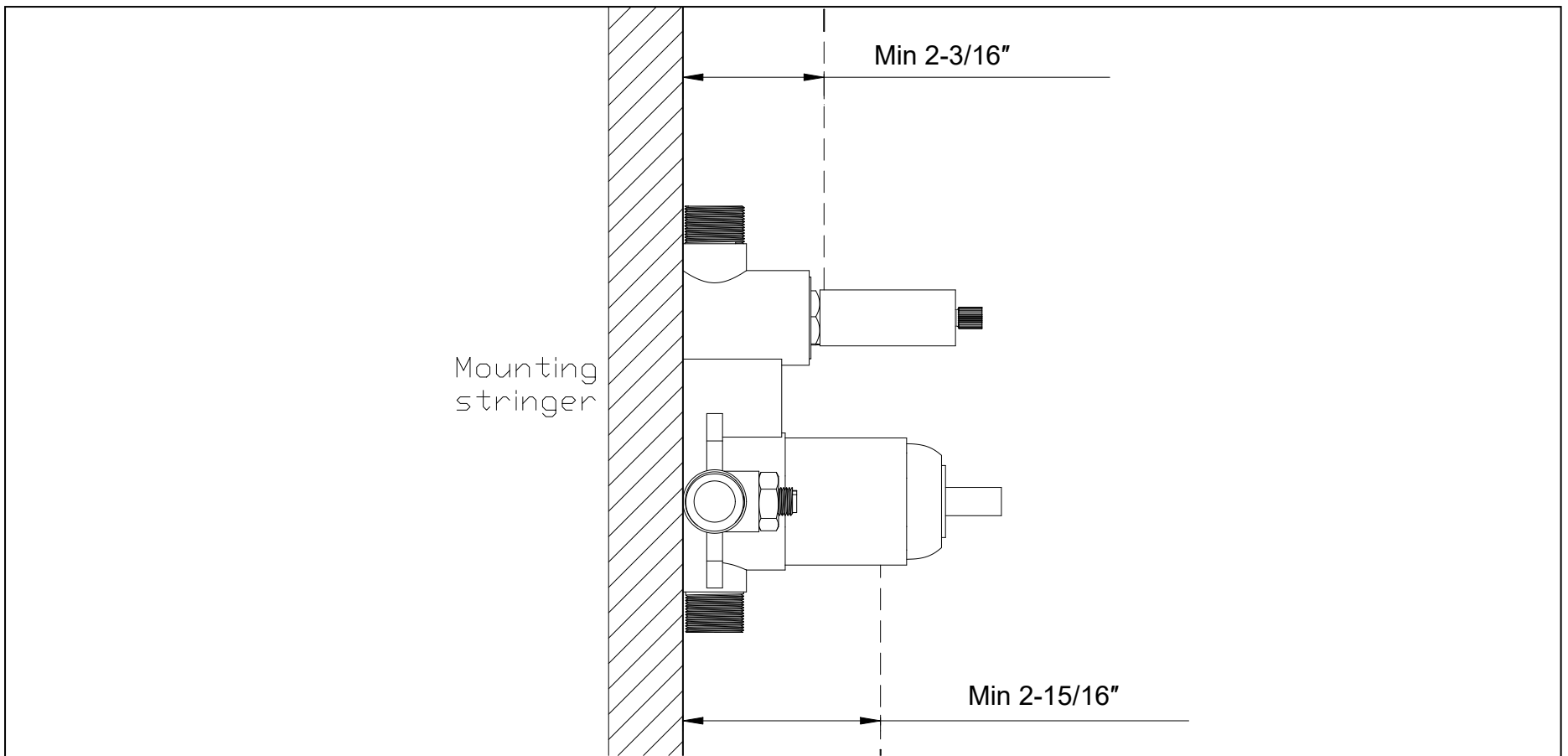
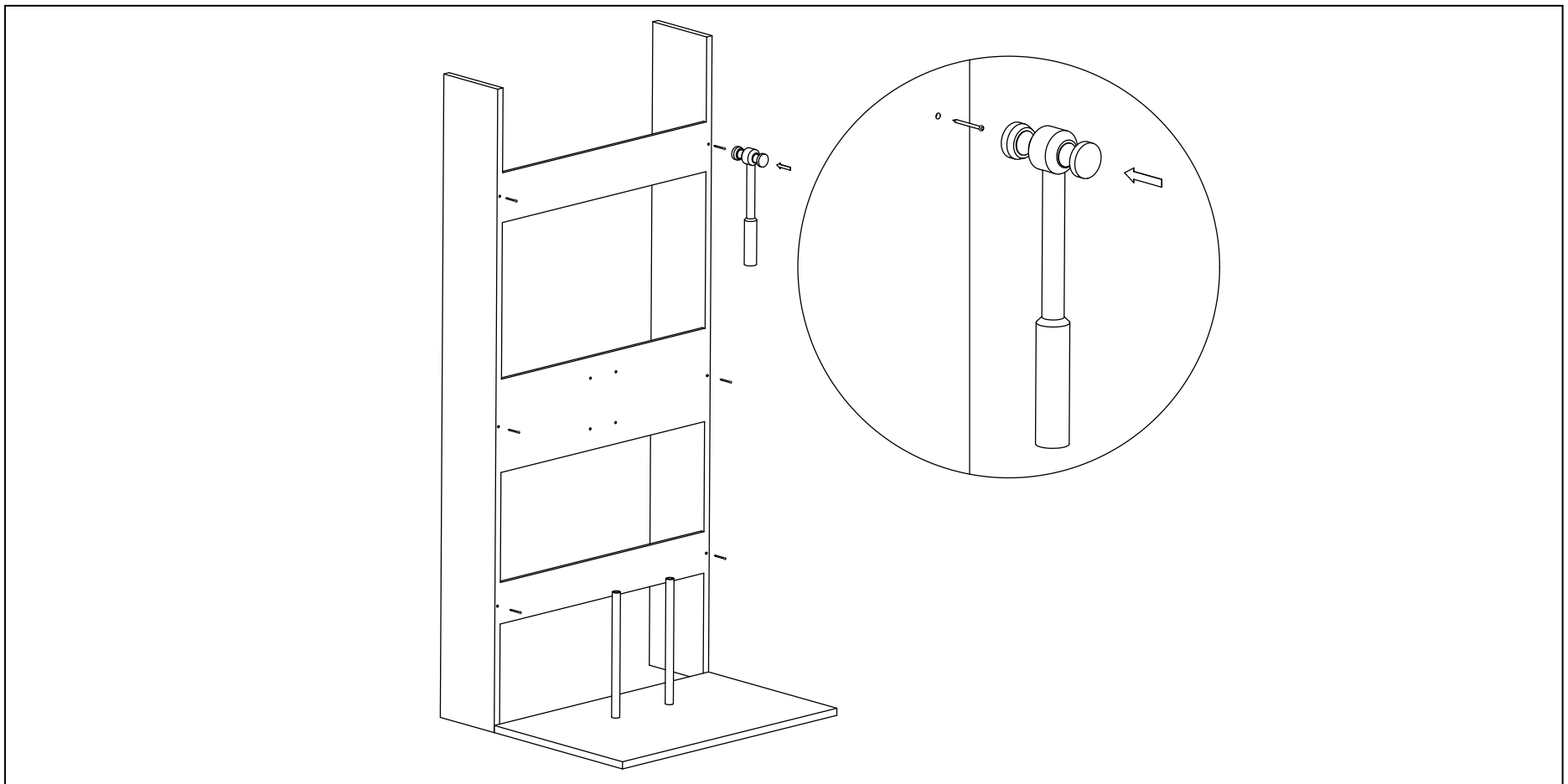
The dimensions of the shower setup must be determined individually based on installation requirements.
Maximum operating pressure at the control valve: 145 PSI. Recommended operating pressure: 43.5 PSI.
Maximum hot water temperature: 60°C (140°F).

5. ROUGH-IN VALVE INSTALLATION

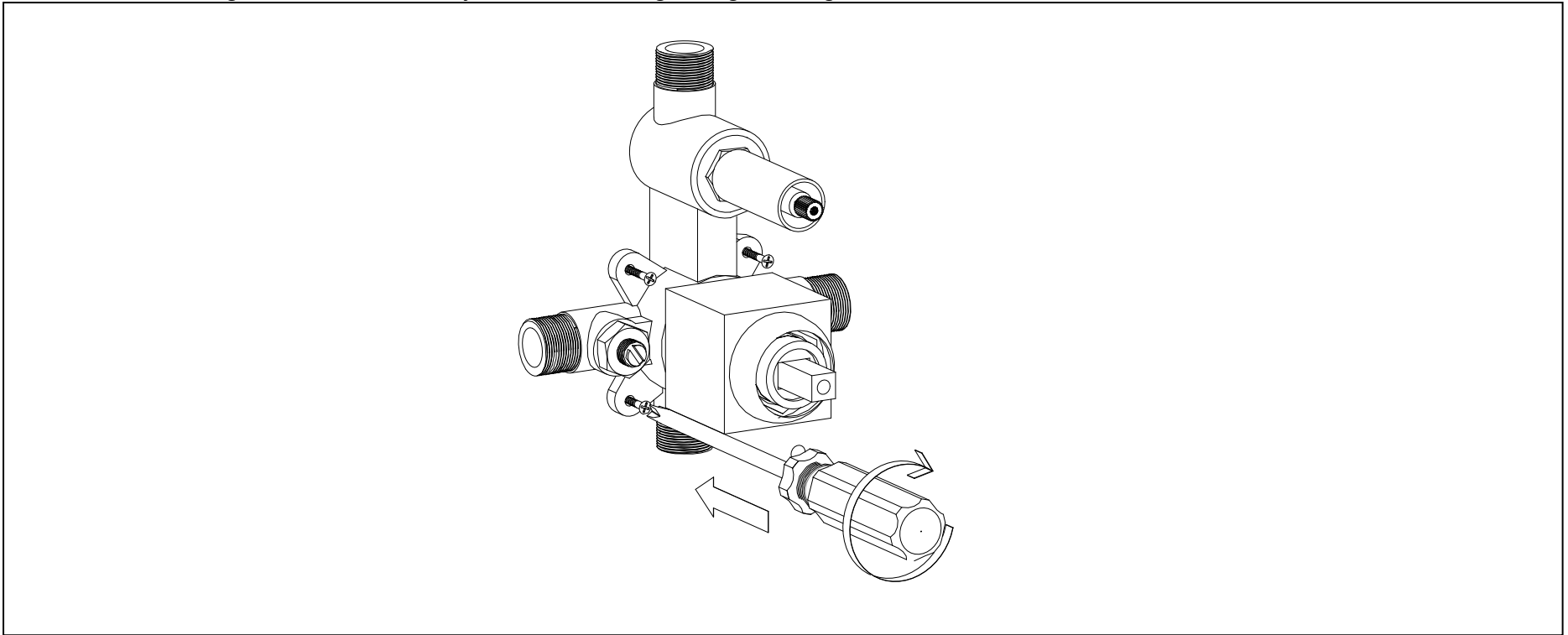
5.1 Use sturdy wood to create a mounting stringer capable of supporting the rough-in valve. Measure the distance from the front of the finished wall to the location where the stringer will be placed. This distance must be 2-9/16 inches (65 mm), with a tolerance of $\pm 13/32$ inches (± 10 mm).



Attention: Operating outside the specified distance range may result in significant reconstruction costs or the need for custom extension components.

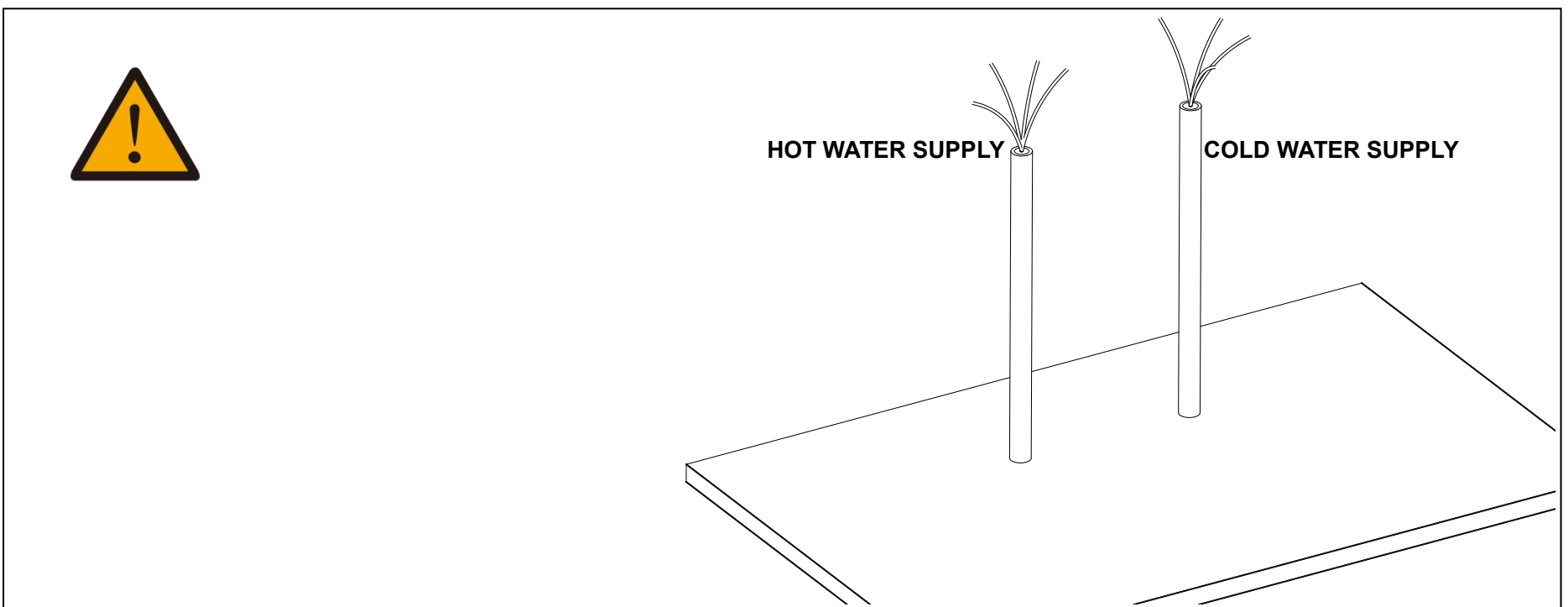


5.2 Secure the rough-in valve assembly to the mounting stringer using screws and anchors.

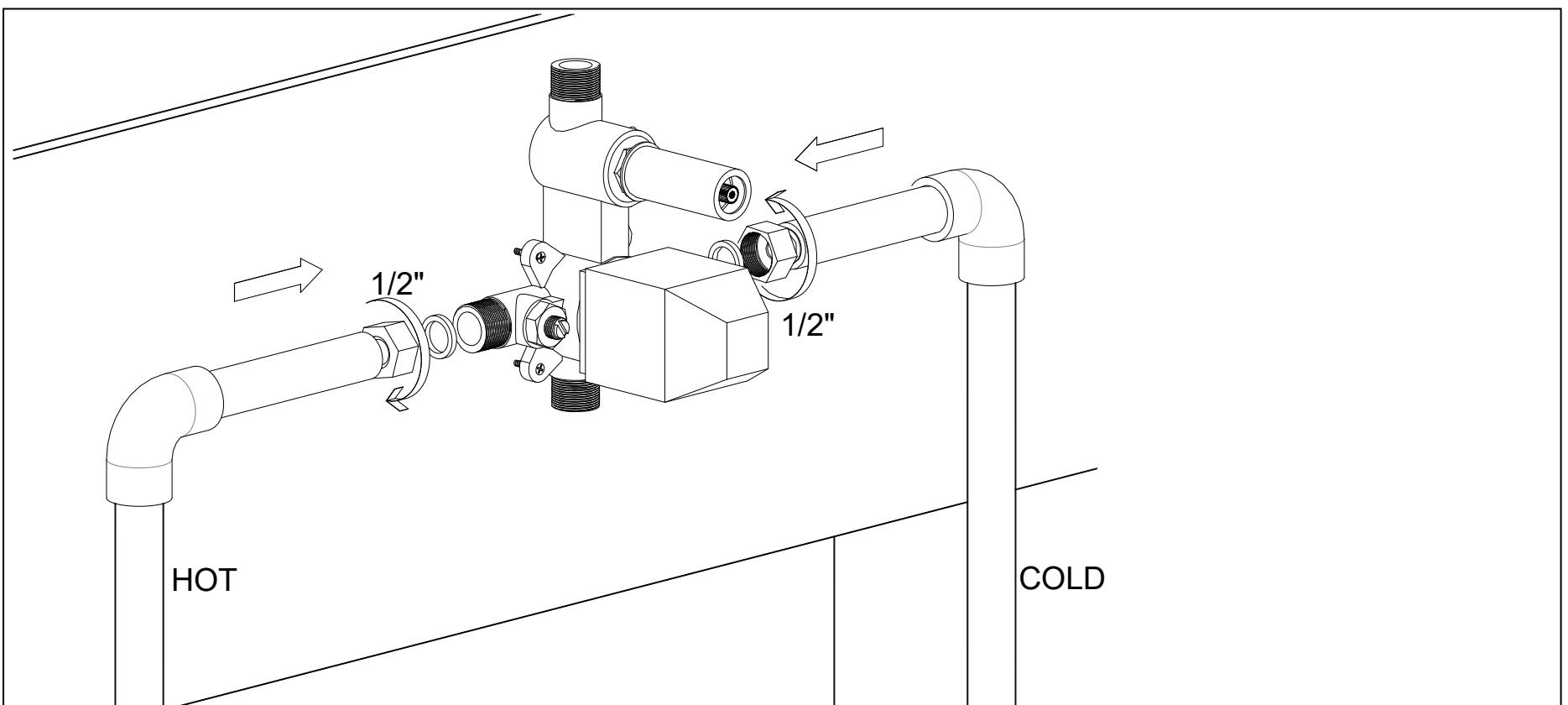


6. VALVE TRIM INSTALLATION

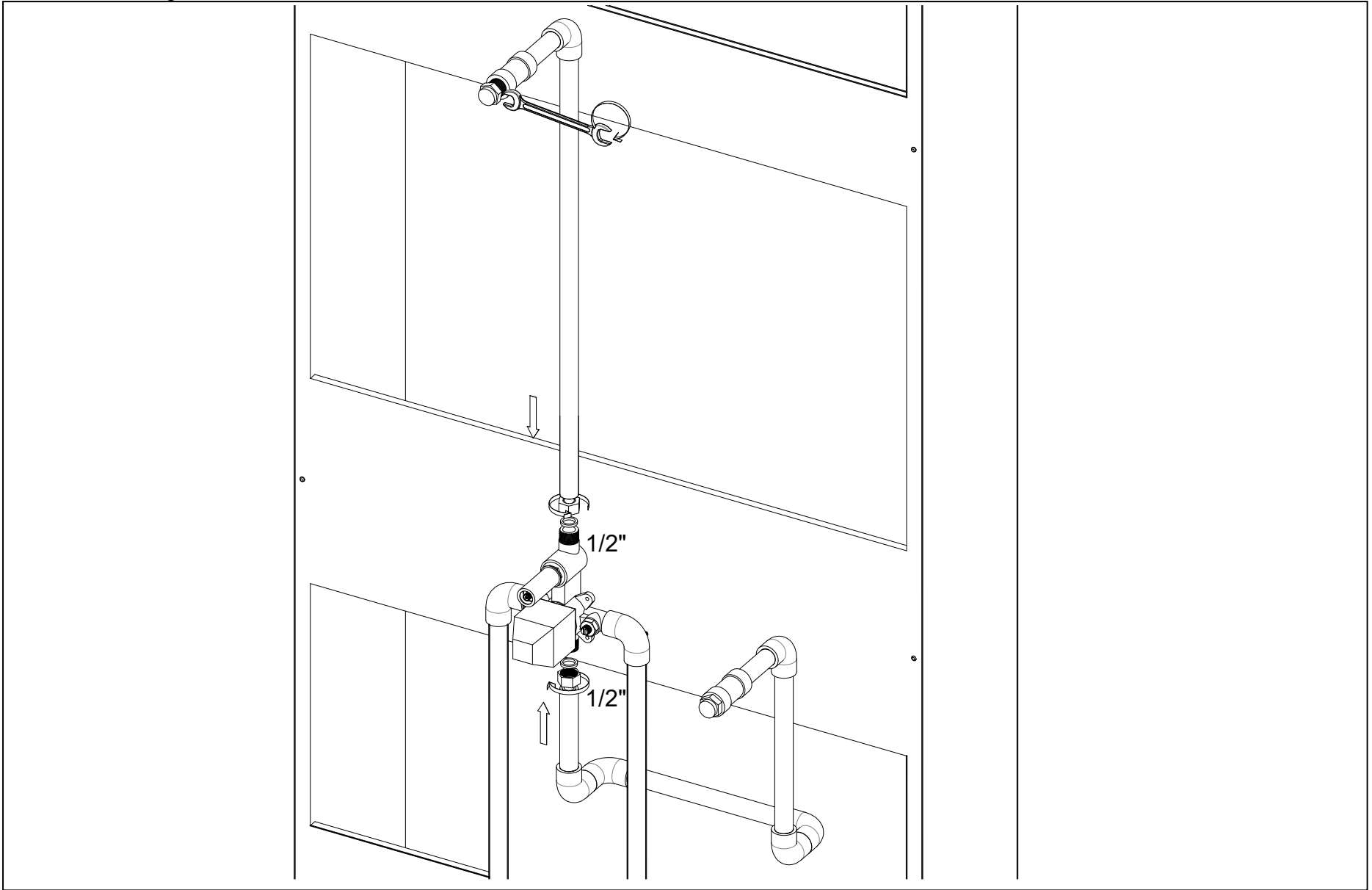
6.1 Turn on the shut-off valve to flush the hot and cold water supply lines before connecting to the valve body. Allow the water to run for 3-5 minutes to remove debris. Shut off the water supply after finishing.



6.2 Connect the valve body to the water supplies using the appropriate fittings for your valve body type (copper tubing, iron pipe, or PEX). For PEX installations, ensure the correct fitting is used for crimping or the appropriate tool for cold expansion. The rough-in valve features NPT 1/2-14 threads for both hot and cold water inlets, compliant with standards in the US and Canada.



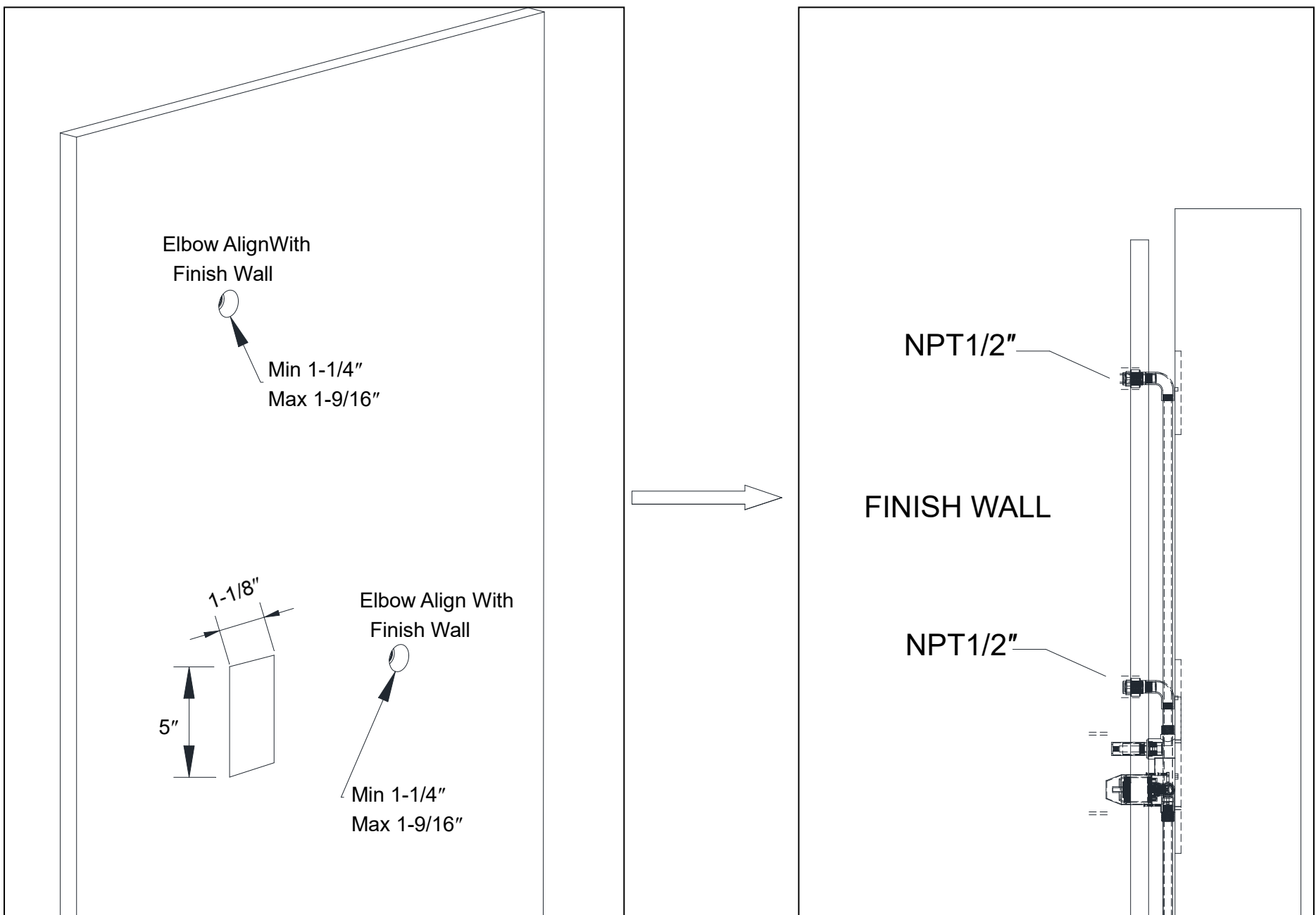
6.3 Connect the top outlet to the shower pipe with the appropriate fittings. Attach the bottom outlet to the hand shower elbow using the correct fittings.



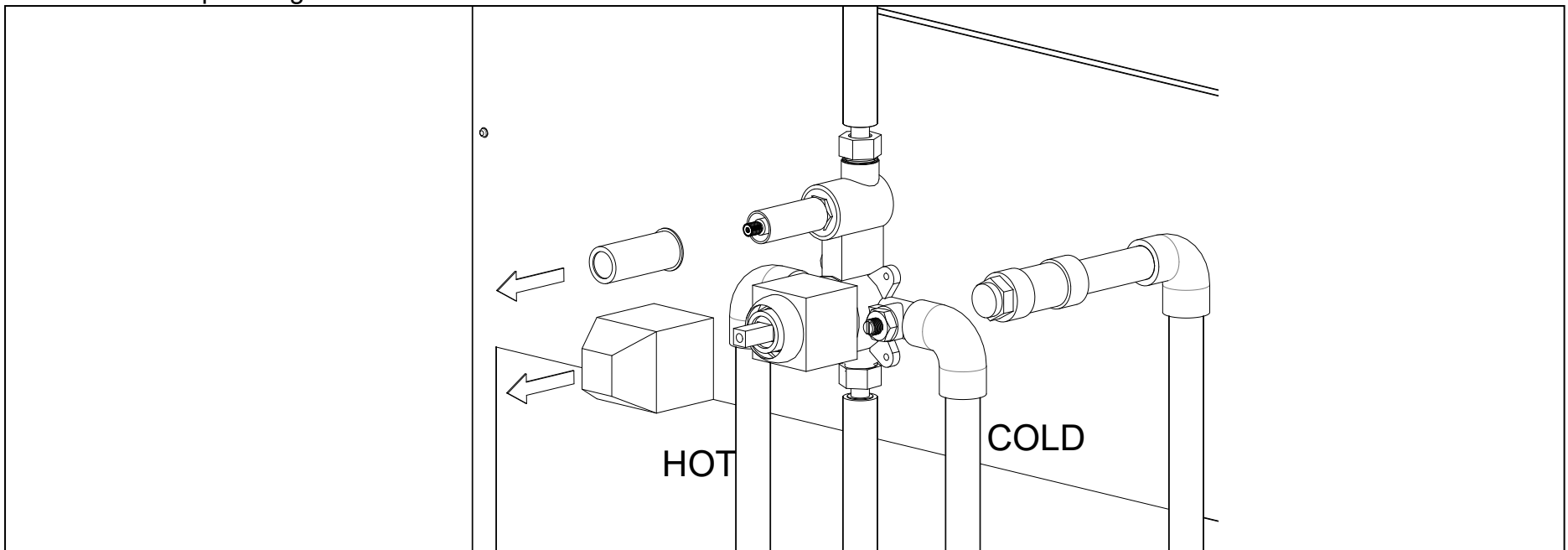
Please align the elbow front face with the finish wall.



Improper elbow installation depth will lead to leak from connector or has to customize extension parts



6.4 Remove the plaster guard cover.



6.5 Plumbing Pressure Testing and Leak Testing.

(a.) Water Pressure Testing Standards

Test Pressure:

- The test pressure shall be 1.5 times the working pressure of the piping system, but not less than 60 PSI (pounds per square inch).
- If the design working pressure of the piping system is less than 60 PSI, the test pressure shall be 60 PSI.
- Recommended test pressure: 100 PSI to 120 PSI (approximately 6.9 to 8.2 bar).

Test Duration:

- The test duration is typically 15 minutes.
- During the test, the pressure should remain stable with no significant drop.

Testing Method:

1. Seal the piping system, ensuring all openings (e.g., faucets, valves) are closed.
2. Use a manual pump or pressure testing equipment to pressurize the system to the specified test pressure.
3. Observe the pressure gauge to ensure the pressure remains stable during the test.
4. Inspect all connections, joints, and faucets for any signs of leakage.

Pass Criteria:

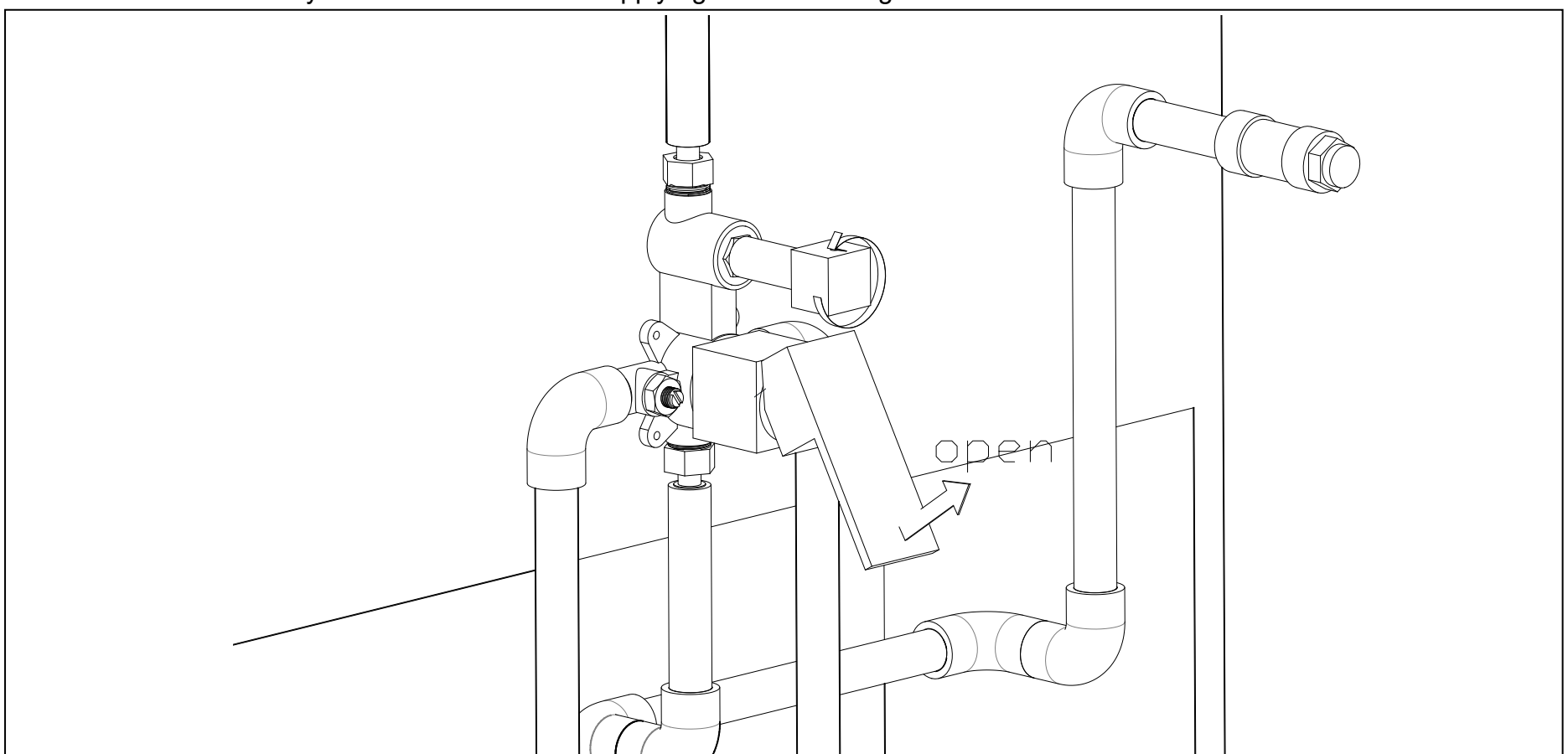
- If the pressure remains stable with no significant drop and no leakage is observed during the test, the piping system passes the test.
- If the pressure drops or leakage is detected, repair the issue and retest.

Precautions:



- **Safety:** The test pressure should not exceed the rated pressure of the pipes and fittings to avoid damage.
- **Record:** Record the test pressure, duration, and results for future inspection or maintenance purposes.

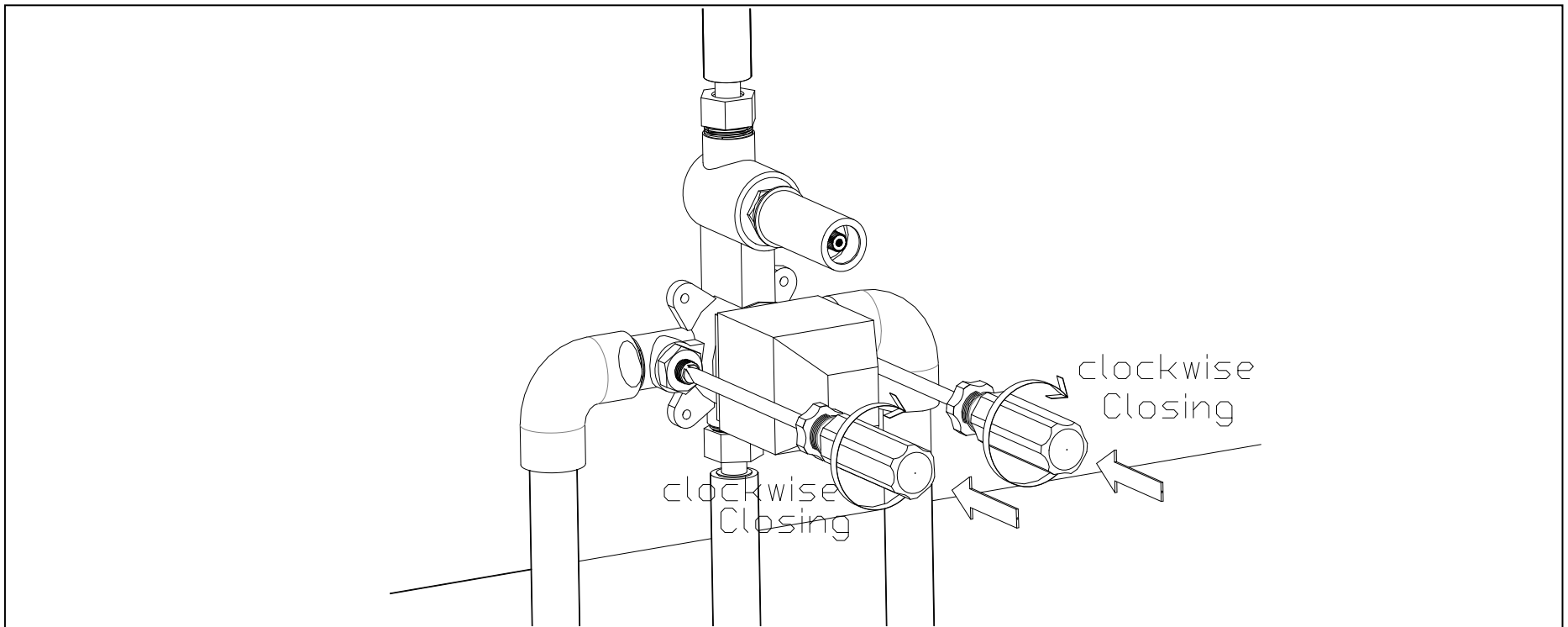
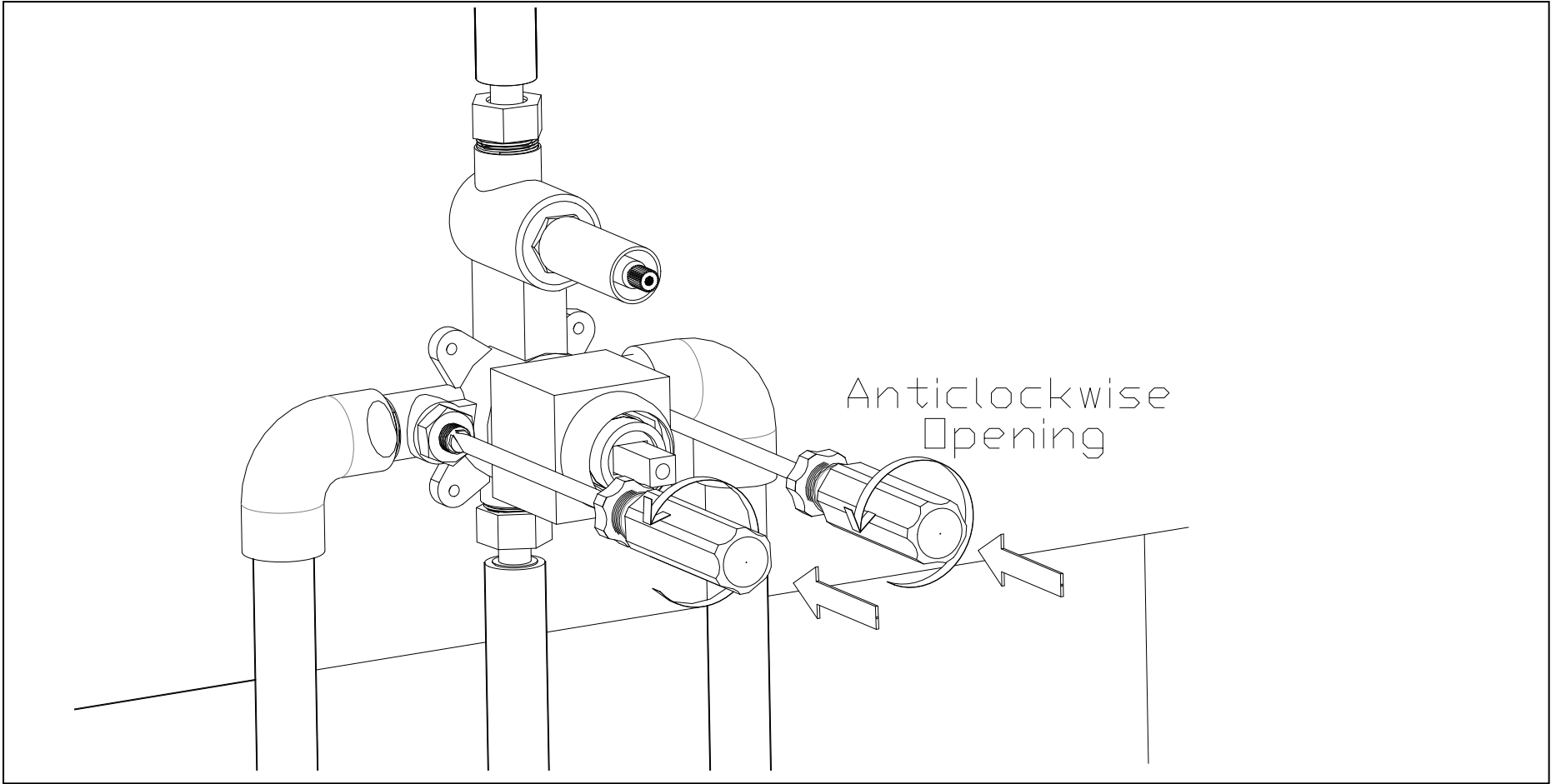
(b.) Leak Testing: After completing the plumbing pressure test, turn on the hot and cold water supply again and check all connections for leaks. Please shut off your hot and cold water supply again if no leaking.



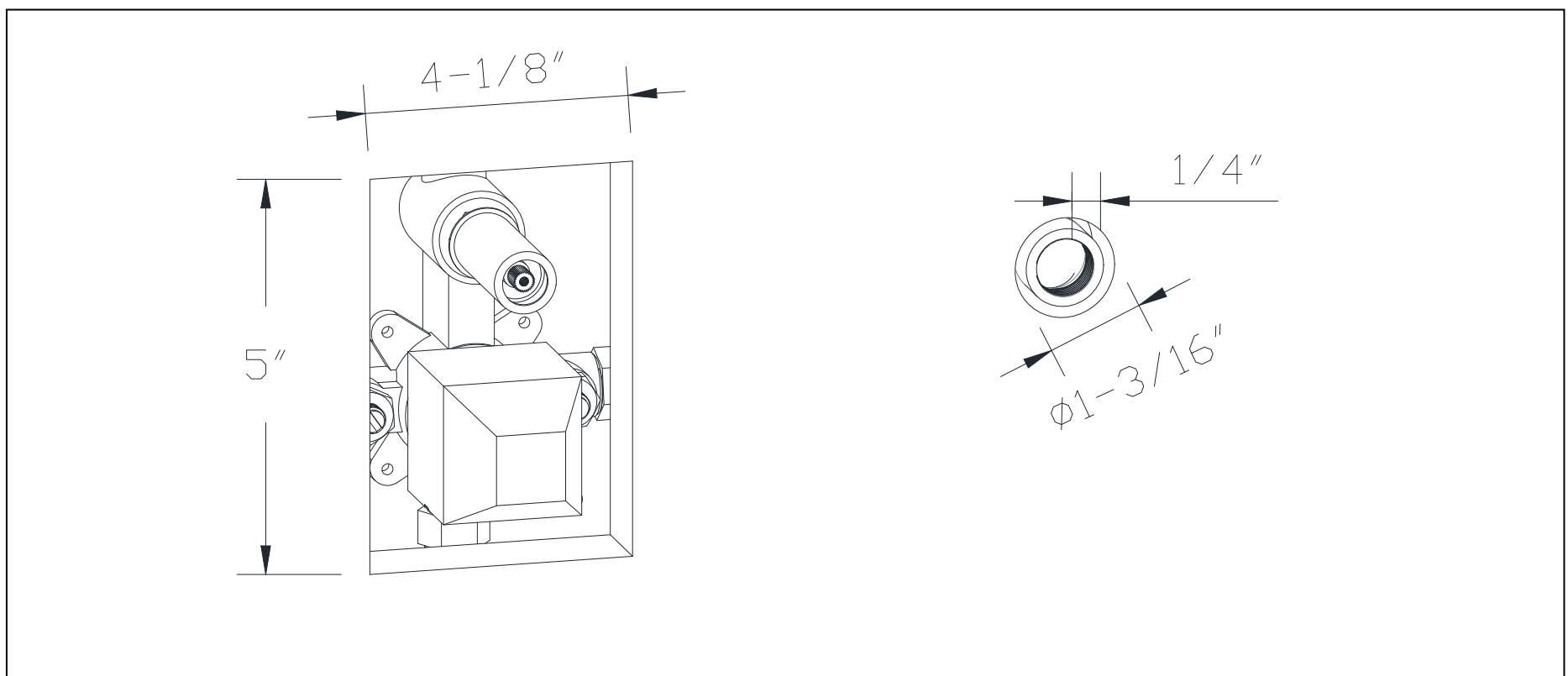
Precautions:

Record: Record the test pressure, duration, and results for future inspection or maintenance purposes.

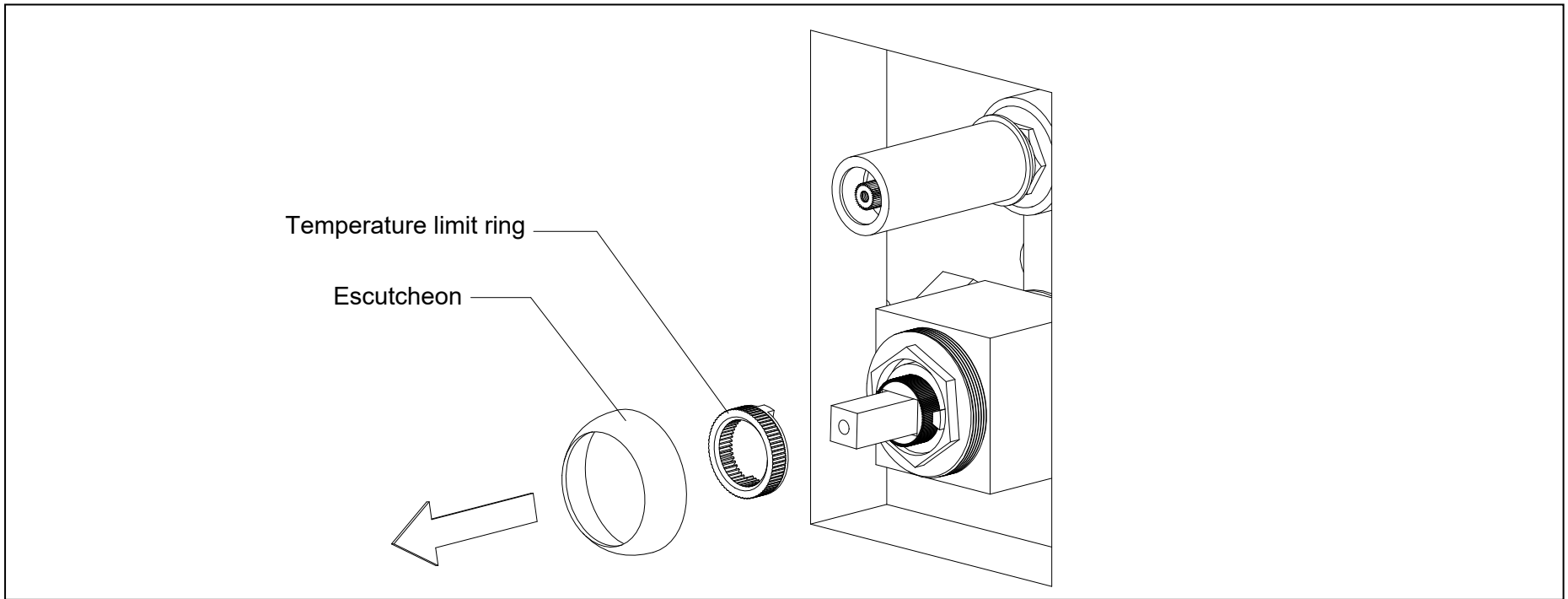
- 4) Set the pressure reducing valve to full open position to make sure the maximum water flow.
 * Note: With a flat head screwdriver, adjust stem anticlockwise to open and clockwise to close.



6.6 Complete the finished wall and drill the mounting holes precisely based on the positions of the mixer valve and elbow for proper installation and future maintenance if needed. (Note: The hand shower holder connector is positioned 1/4" from the finished wall.)



6.7 Remove the escutcheon and the temperature limit ring from the valve assembly.

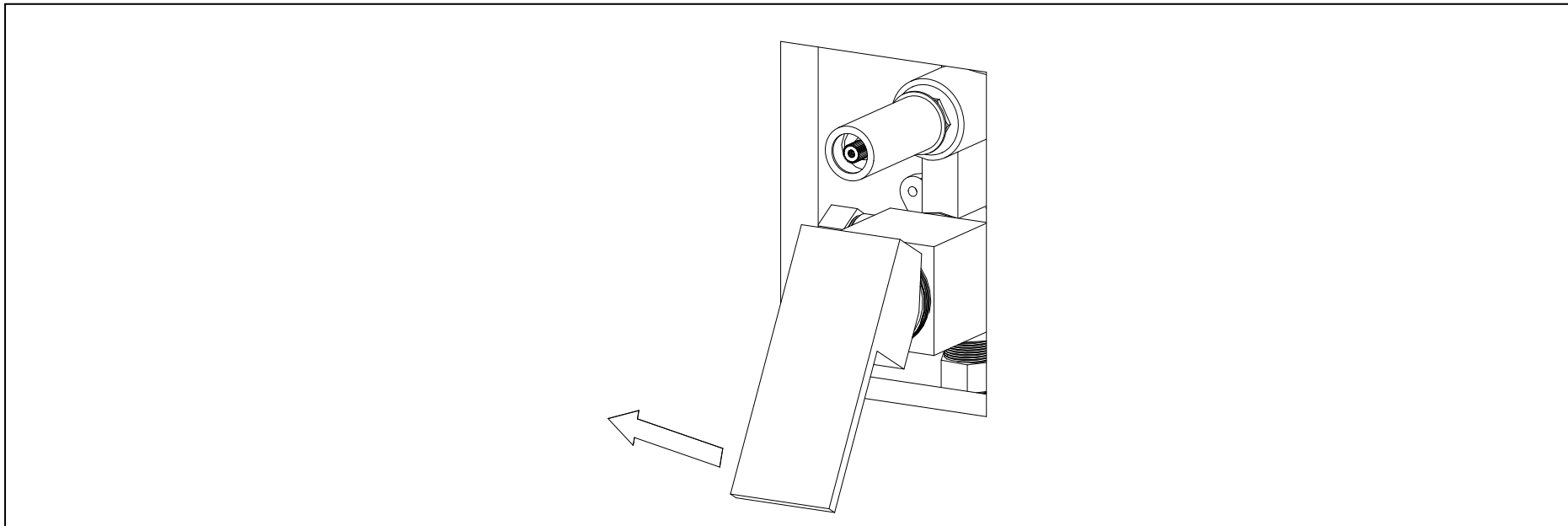


6.8 Turn on and adjust the cartridge to achieve the desired maximum shower water temperature. For anti-scald protection, it is essential to test the mixer valve regularly to minimize the risk of scalding and ensure user safety. This testing can be performed as follows: Set the mixer blend temperature to 100.4°F [38°C], then isolate the cold water supply. The outlet flow rate should reduce to a safe level.

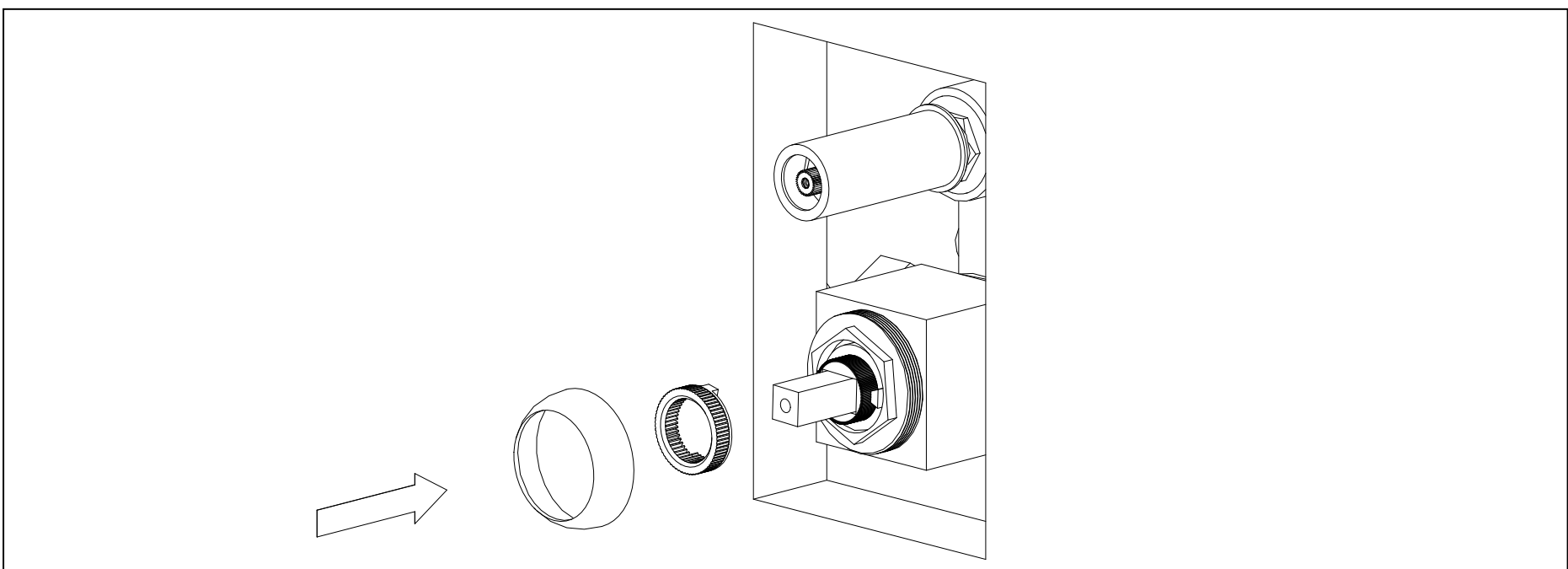
Recommended outlet temperatures:

- 111.2°F [44°C] for bath fill (note: refer to additional guidelines if applicable);
- 105.8°F [41°C] for showers;
- 105.8°F [41°C] for washbasins;
- 100.4°F [38°C] for bidets.

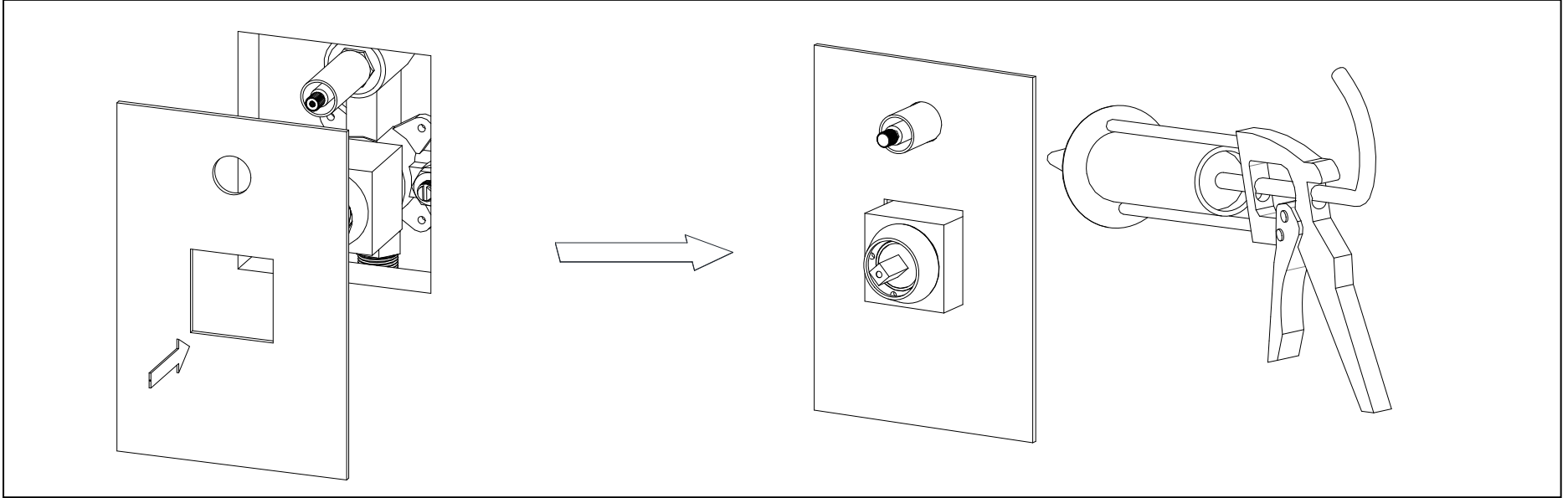
The mixed water temperatures must never exceed 114.8°F [46°C] at the terminal fitting to prevent scalding risks and ensure compliance with safety standards.



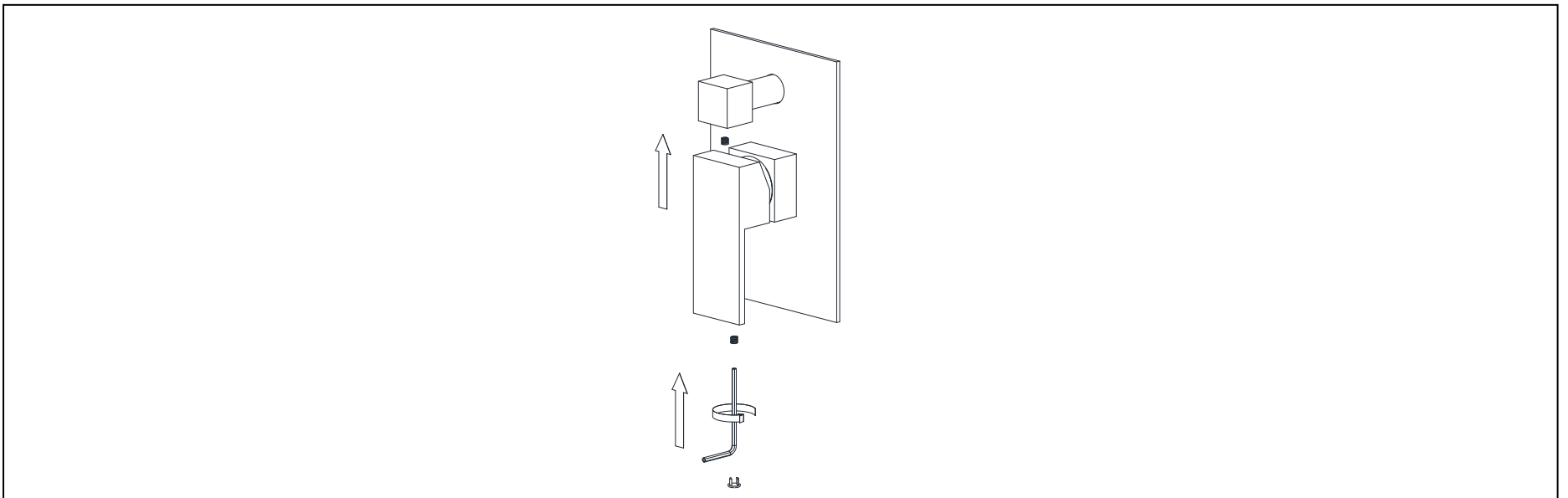
6.9 Attach the temperature limit ring to the cartridge to set the maximum temperature. Then, reinstall the escutcheon onto the bonnet.



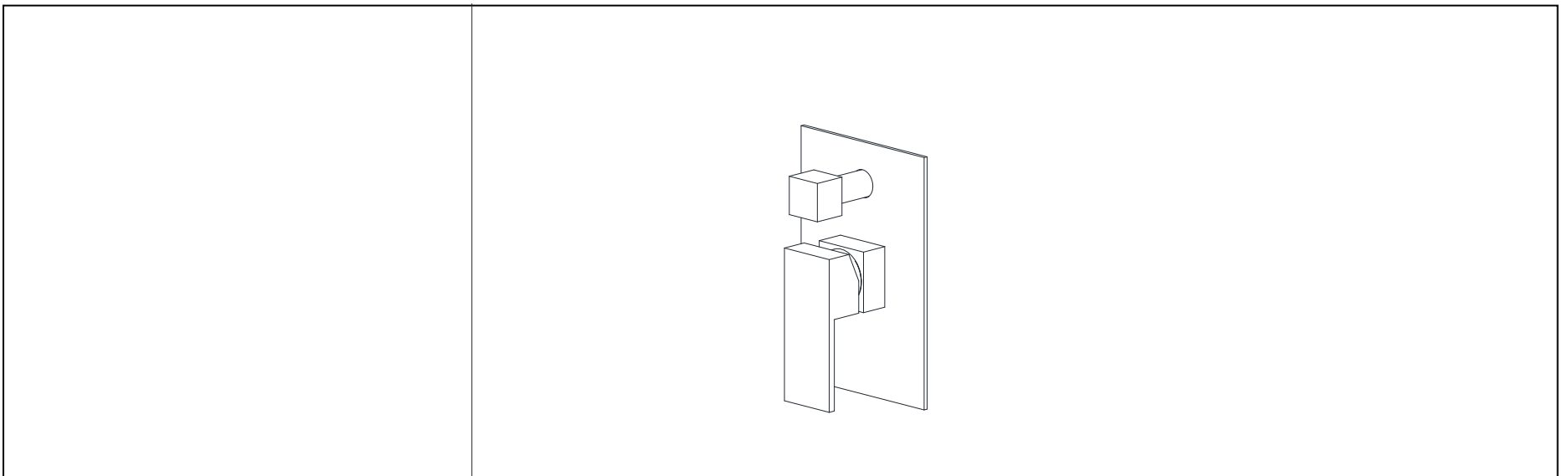
6.10 Install the escutcheon over the valve body and slide it firmly against the finished wall. Apply waterproof sealant around the edge of the escutcheon to ensure a watertight seal.



6.11 Attach the handle to the valve stem and tighten the set screws using the provided Allen wrench. Do not overtighten. Repeat the same procedure for the diverter knob. Finally, press the screw cover into place.

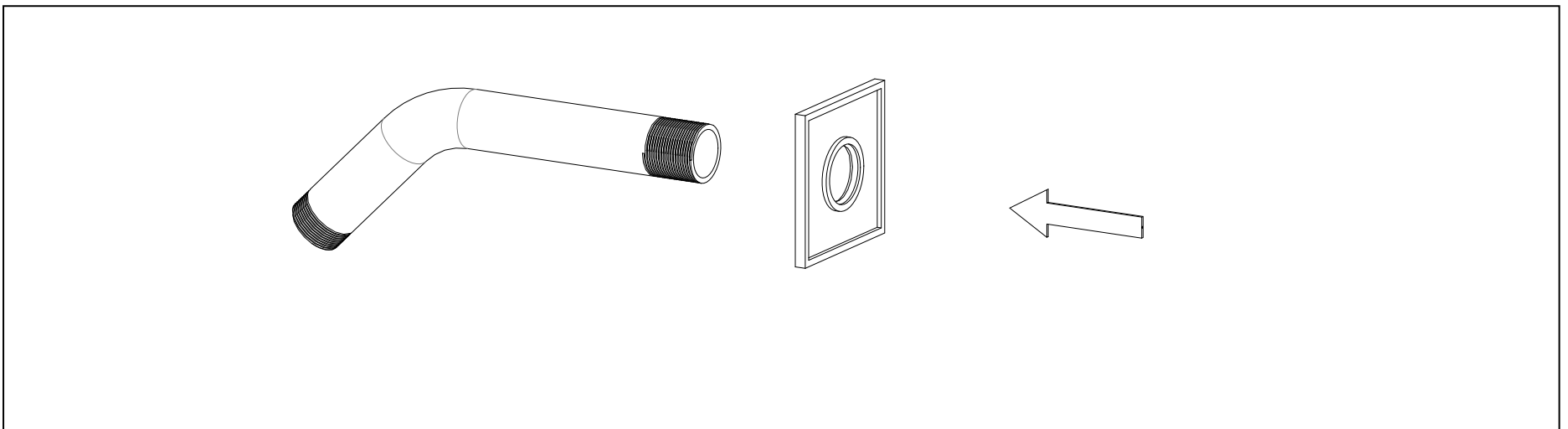


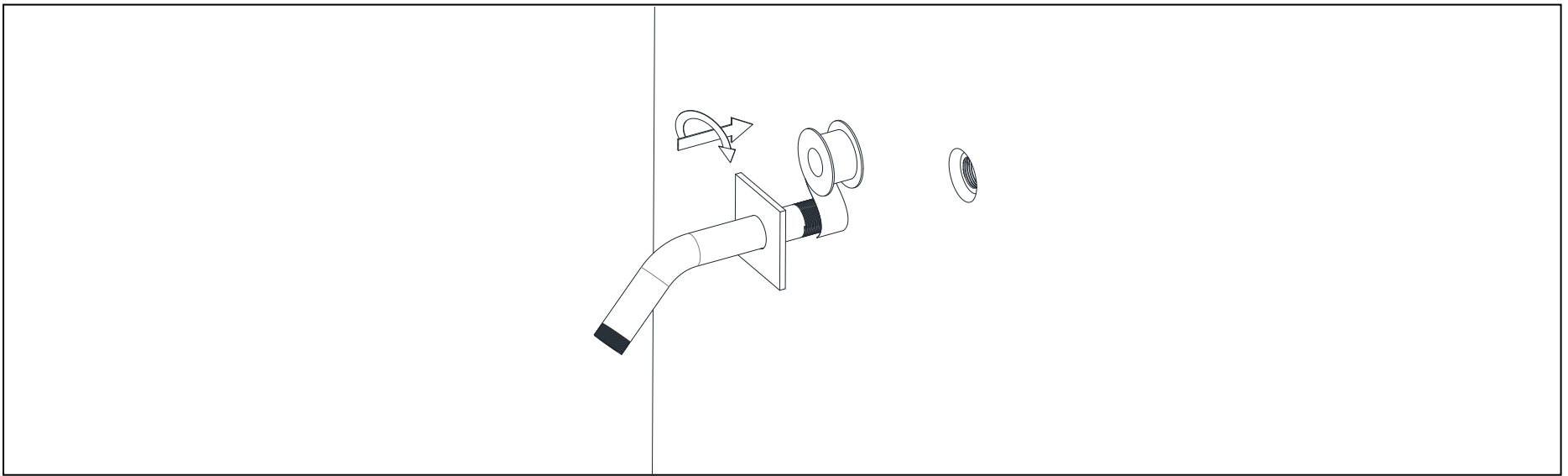
6.12 Valve trim install complete.



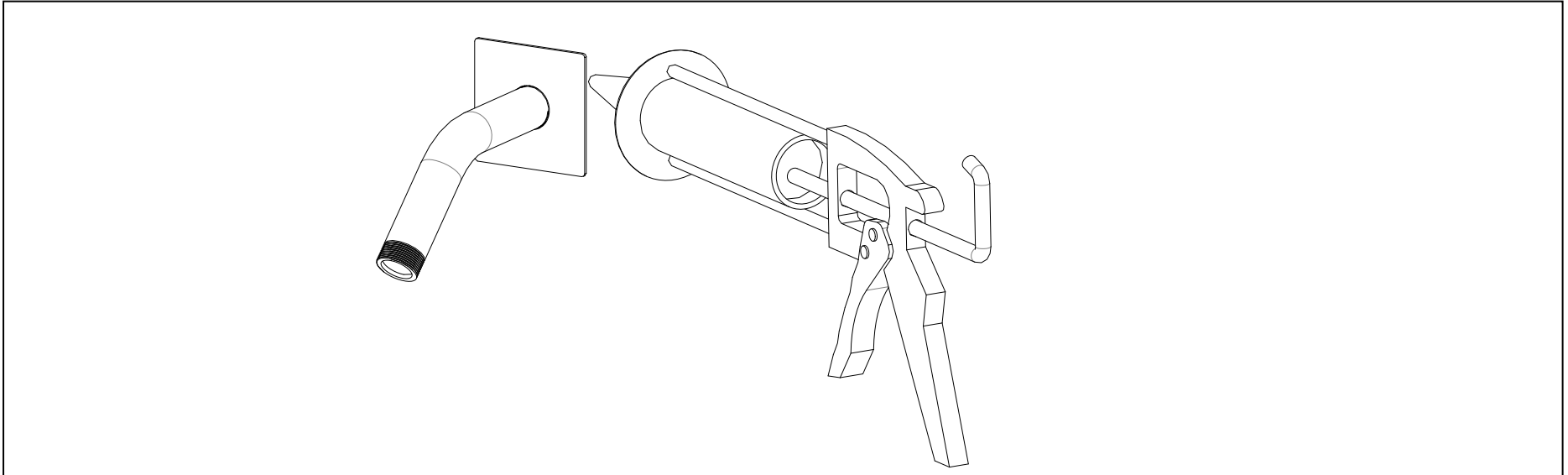
7. SHOWERHEAD INSTALLATION

7.1 Slide the shower arm escutcheon onto the shower arm. Apply Teflon tape to the shower arm threads. Secure the shower arm to the pipe elbow inside the wall by rotating it clockwise until tight. Standard shower arm inlet threads: NPT 1/2-14 (US/CA).





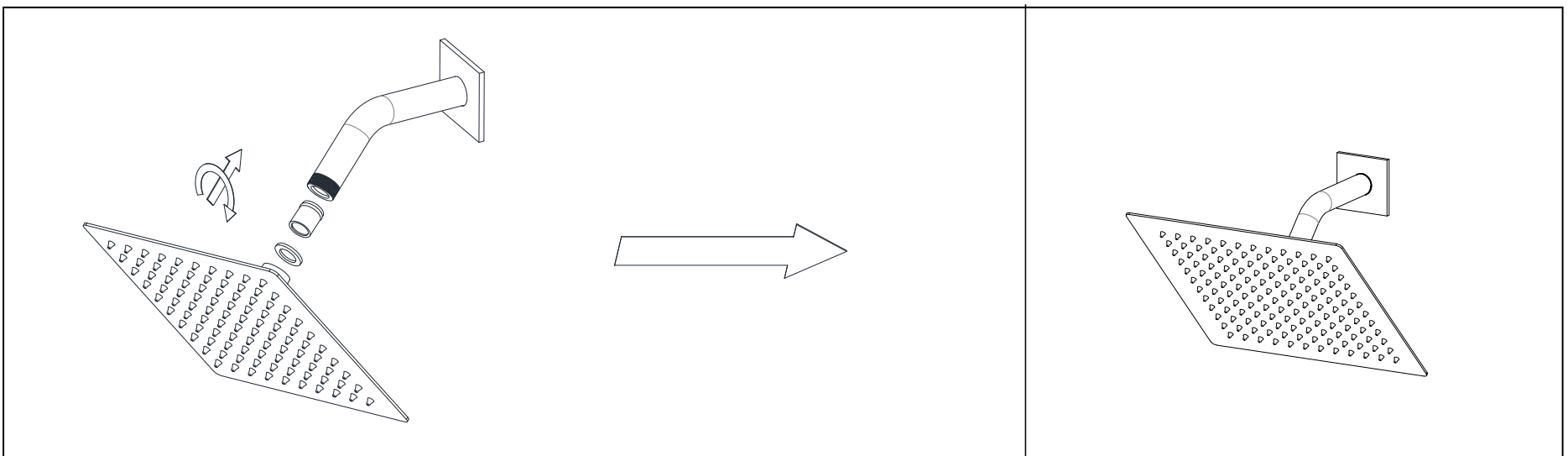
7.2 Apply waterproof sealant around the edge of the shower arm escutcheon to seal the wall.



7.3 Insert the screen washer into the showerhead connector and place the check valve into the shower arm. Carefully hand-tighten the showerhead onto the shower arm by rotating it clockwise to ensure a proper seal.

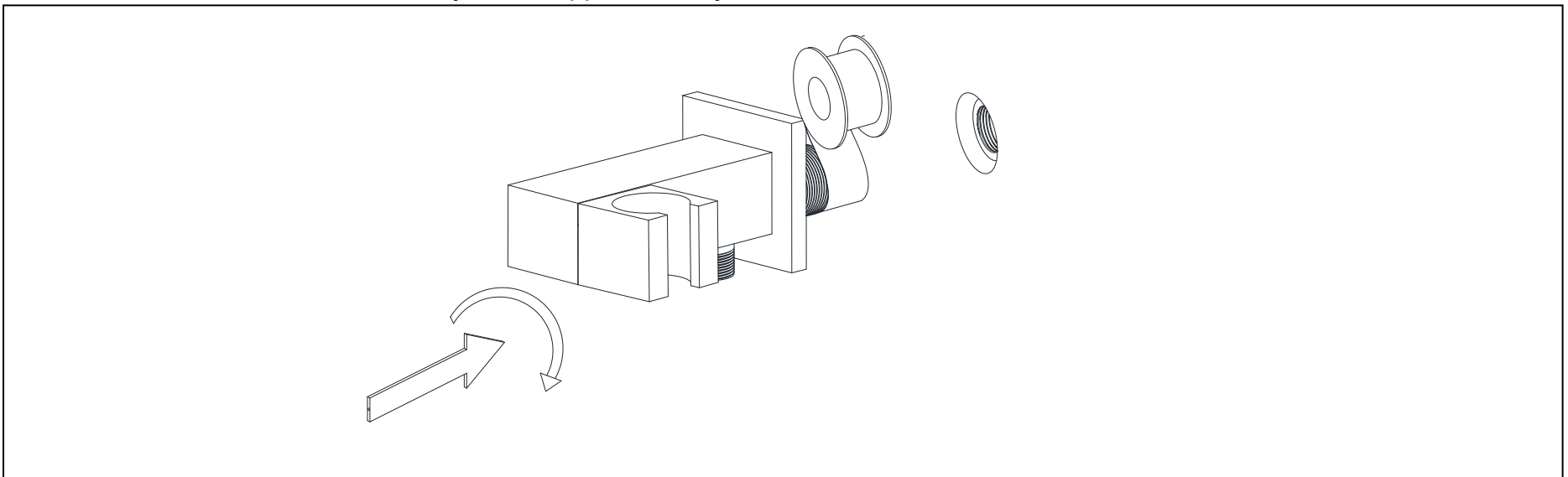


Note: Missing the screen washer or check valve may result in improper shower function.

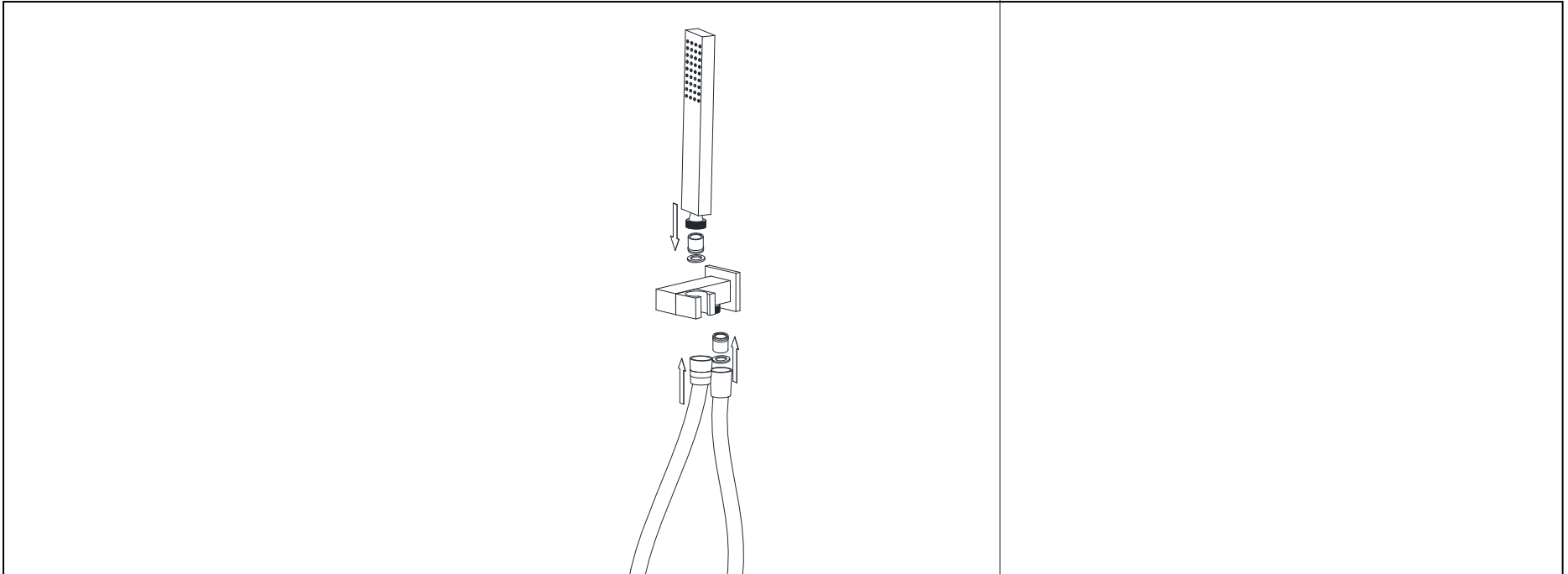


8. HAND SHOWER INSTALLATION

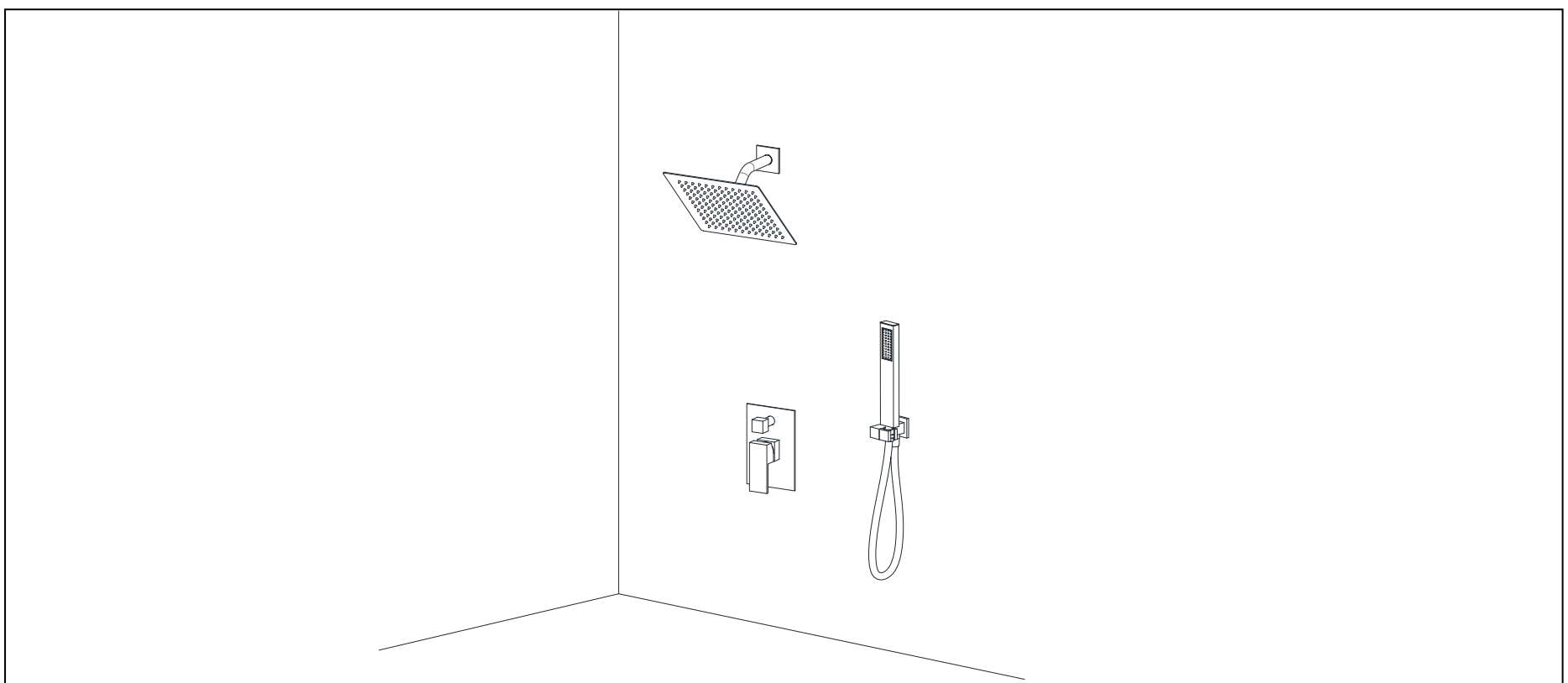
8.1 Attach the shower holder assembly to the nipple securely.



8.2 Attach the hand shower to the water supply elbow using the flexible hose. Ensure all connections are secure to prevent leaks.



8.3. Install complete.



9. INSPECTION

9.1 Turn on the hot and cold water supplies and check all connections to ensure there are no leaks.

10. FUNCTION INSPECTION

10.1 Turn on the handle, the water outflow from the showerhead.

10.2 Switch the diverter knob, the water will rush from the hand shower.

INSTALLATION COMPLETED

TROUBLESHOOTING

Symptom	Solution
Not or less water come out	1. Make sure turn on the shut-off valve 2. Inspect all connector for ensuring no stemming inside 3. Make sure hot and cold water both has enough water, the pressure balance valve will stop water running suppose one of hot/cold water supply system is waterless or only supply low water pressure water.
Leaking from handle	1. Replace the cartridge 2. Replace the O-ring.
Less water come out from showerhead	1. Clean the calcification in showerhead nipple 2. Clean the screen washer in showerhead inlet connector

CLEARNING RECOMMENDATION FOR SUMERAIN PRODUCTS

Modern lavatory faucets, kitchen faucets, and showers consist of very different materials to comply with the needs of the market with regard to design and functionality. To avoid damage and returns, it is necessary to consider certain criteria when cleaning.

Cleaning Materials for faucets and showers

Acids are a necessary ingredient of cleaning materials for removing lime, however please pay attention to the following points when cleaning faucets and showers:

- Only use cleaning materials which are explicitly intended for this type of application.
- Never use cleaning materials which contain hydrochloric, formic, phosphoric, or acetic acid, as they cause considerable damage.
- Never mix one cleaning material with another.
- Never use cleaning materials or appliances with an abrasive effect, such as unsuitable cleaning powders, sponge pads, or micro fiber cloths.

Cleaning instructions for faucets and showers

Please follow the cleaning material manufacturer's instructions. In addition, pay attention to the following points:

- Clean the faucets and showers as and when required.
- Use the amount of cleaning product and the amount of time recommended by the manufacturer. Do not leave the cleaner on the fixture longer than necessary.
- Regular cleaning can prevent calcification, if scale deposits are noticed on the faucet surface or the spout, you can clean it by a commercial limescale remover, such as Lime-Away® or CLR®. Dilute the remover according to the label instructions.
- The faucets might have some rusty if your faucet under hard water condition, please rub it with aluminum foil dipped in water until the surface is nice and smooth, and wipe it use a small amount of chrome polish or maybe something like car wax (such as Meguiar®, Turtle Wax®) or polish.
- For stainless steel faucet and spout both made of solid stainless, normally this finish has not protective coating on it (in particular waterfall spout inside), stainless steel is by its material nature very tarnish resistant, but by no means tarnish or stain proof. This finish might oxidize naturally over time and react to its environment. Keep your stainless fixture wiped clean and dry and use only a cleaner specifically made for stainless steel (such as Weiman®, CLR®).
- When using spray cleaners, spray first onto a soft cloth or sponge, never spray directly onto the faucet as droplets can enter openings and gaps and cause damage.
- After cleaning, rinse thoroughly with clean water to remove any cleaner residue.

Important

Residues of liquid soaps, shampoos, and shower foams can also cause damage, so rinse with clean water after using.



Please note: if the surface is already damaged, the effect of cleaning materials will cause further damage.

**Components with damaged surfaces must be replaced or injury could result.
Damage caused by improper treatment is not covered under the warranty.**

SUMERAIN®

SUMERAIN INTERNATIONAL GROUP INC

Address: 1226 NORTH KING ST NUM 522
WILMINGTON, DE 19801
United States

Tel: +1(866)203-0866

Web: <http://www.sumerain.com>

E-mail: supports@sumerain.us

HONGKONG SUMERAIN SANITARY INDUSTRY CO., LIMITED

Address: FLAT/RM 3B 3/F BANK TOWER
NOS.351&353 KING'S ROAD
NORTH POINT
HK

Tel: +86-750-2731579

E-mail: supports@sumerain.com

SUMERAIN EUROPE SUPPORT

Address: Flottwellstr. 15
10785 Berlin,
Deutschland

Tel: [+49 \(0\)30/23975898](tel:+49(0)3023975898)

E-mail: de@sumerain.com