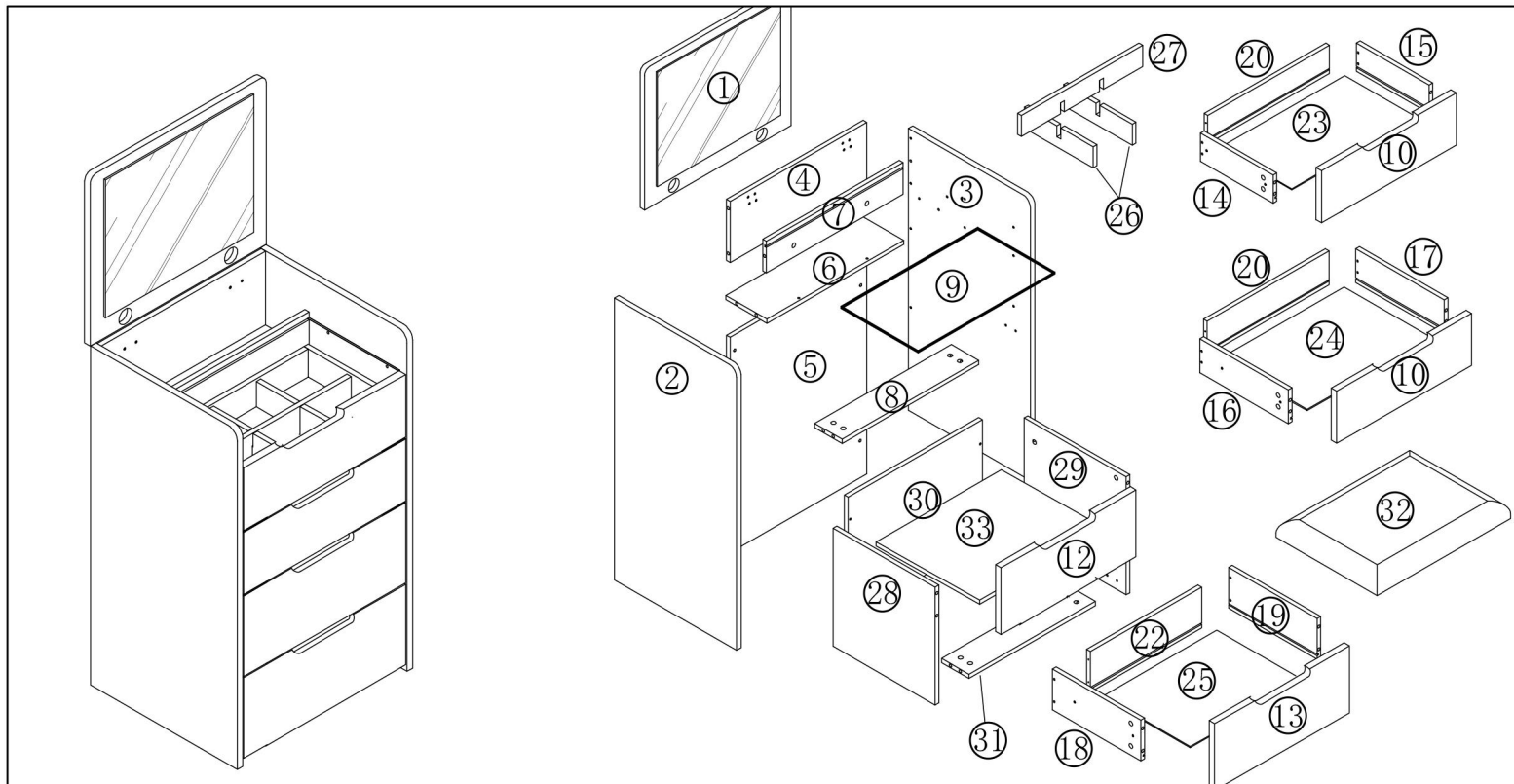


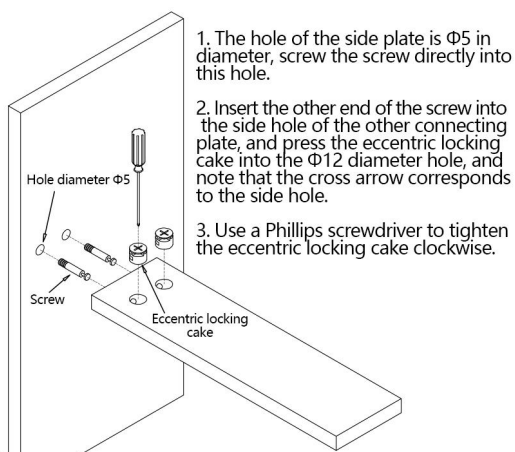
TS48-60# Dresser Instructions



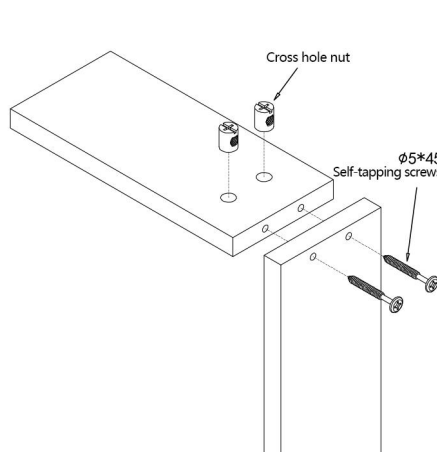
- | | | | | | |
|--------------------------------------|-----------------------------------|--------------------------------|-----------------------------------|---------------------------------|------------------------------|
| 1.Panel 1pc | 2.Left side panel 1pc | 3.Right side panel 1pc | 4.Upper back panel 1pc | 5.Lower back panel 1pc | 6.Laminate 1 pc |
| 7.Clashboard 1pc | 8.Pull strips 1pc | 9.Layer glass 1pc | 10.Upper drawn 2pc (narrower) | 11.No numbering | 12.Fake noodles 1 pc (width) |
| 13.Lower drawer 1pc (wider) | 14.Small left drawer side 1pc | 15.Small Right Drawer Side 1pc | 16.Middle Left Drawer 1pc | 17.Middle Right Drawer 1pc | 18.Large left drawer 1pc |
| 19.Big right draw side 1pc | 20.Upper Draw Tail 2pc (longer) | 21.No numbering | 22.Bottom Draw Tail 1pc (shorter) | 23.Upper bottom draw 1pc | 24.Middle Draw Bottom 1pc |
| 25.Lower Drawer Bottom 1pc (shorter) | 26.Plaid vertical board 2 pc | 27.Lattice horizontal 1pc | 28.Makeup board left side 1 pc | 29.Make-up board right side 1pc | 30.Make-up board back 1pc |
| 31.Make-up Stool Pull Strip 1pc | 32.Make-up Stool Seat Cushion 1pc | 33.Laminate 1pc | | | |

	A	B	C	D	E	F	H	I	J
Name	3-in-1	2-in-1	Door hinges	Silent tracks	Layer pallets	Self-tapping screws		Small corner code	Foot pegs
Graphics									
Specification	Φ12/L=40		Straight bends	10"	Φ8*18	Φ3.5*12	Φ4*30		
Quantity	31 sets	17 pcs	2 pcs	3 groups	4 pcs	50 pcs	13 pcs	2 pcs	10 pcs

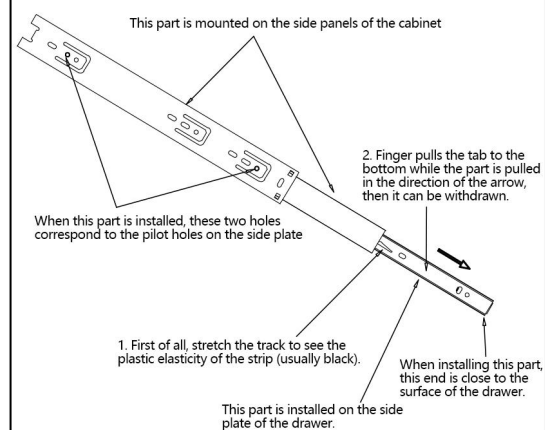
3-in-1 instructions for use



2-in-1 instructions for use

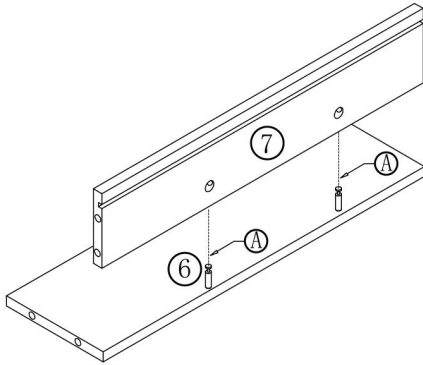


Instructions for use of the track

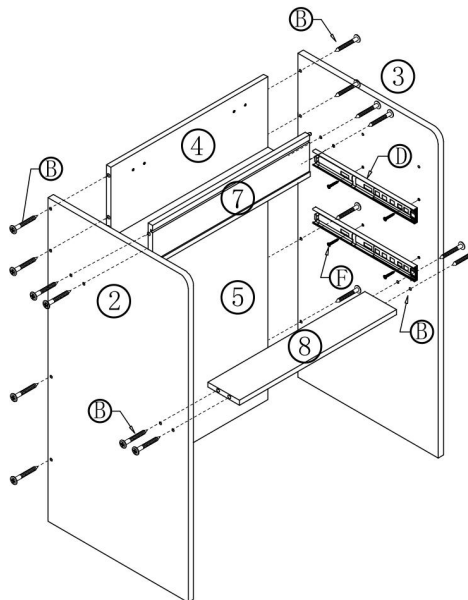


Installation steps

Step 1: Connect the partition and upper back plate with the shelf with a 3-in-1.

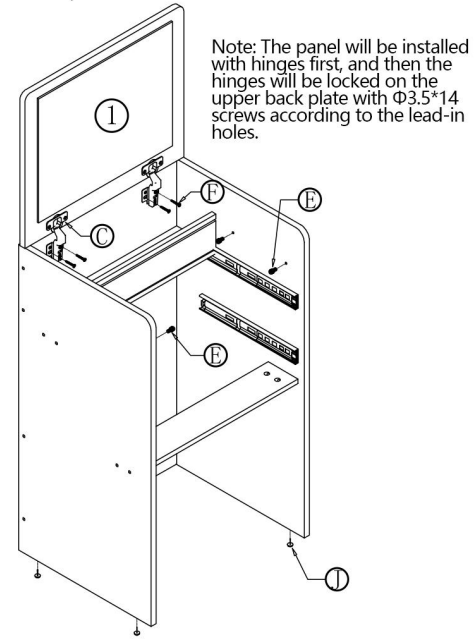


Step 2: Install the tie strips, lower back plate and left and right side panels.



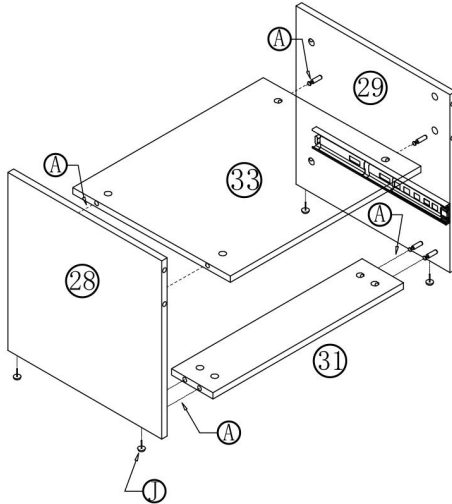
Note: The side plate is pre-installed with $\Phi 3.5 \times 12$ screws according to the lead hole.

Step 3: Nail the foot pegs first, and then install the panel.

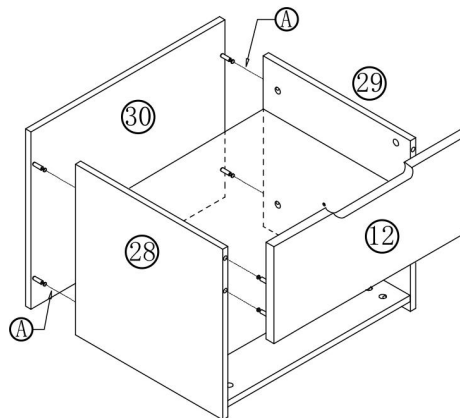


Step 4: Assemble the side panels of the makeup stool and the pull bar with 3-in-1 according to the picture.

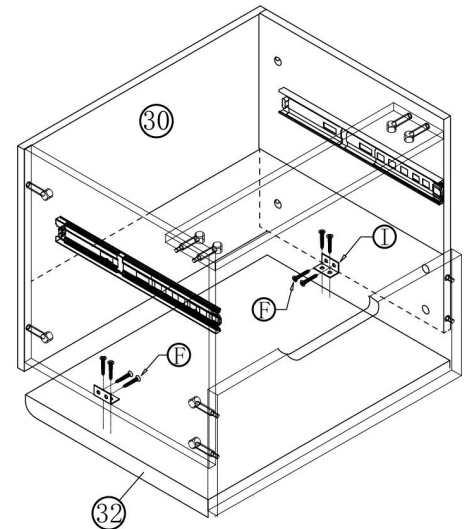
Note: Nail the side panels of the stool first, and use $\Phi 3.5 \times 12$ screws to install the rails according to the lead holes.



Step 5: Install the back of the stool and the false drawer.

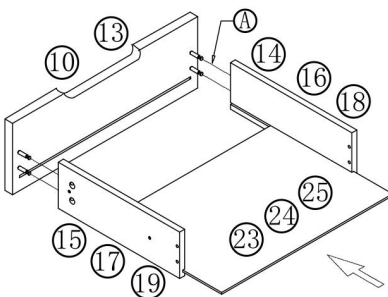


Step 6: Install the seat cushion

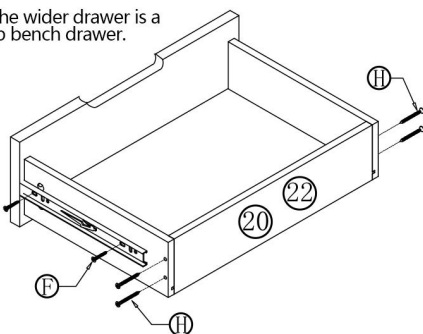


Note: Place the seat cushion in the appropriate position, place the stool upside down, and fix it in the side panel position with screws and small corner codes.

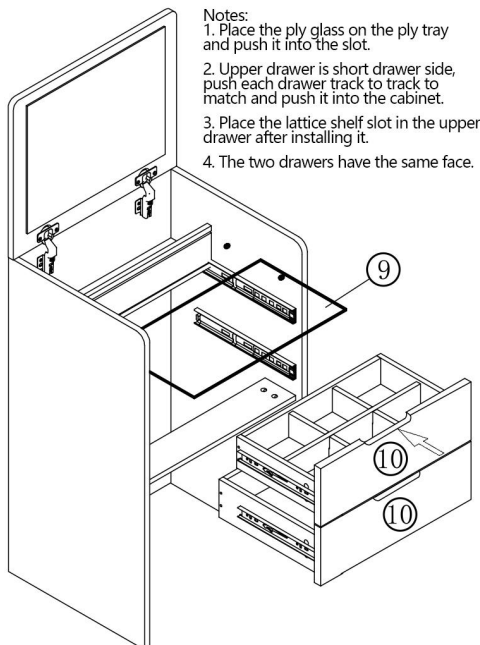
Step 7: Assemble the drawers according to the drawing.



Note: The wider drawer is a makeup bench drawer.



Step 8: Install the laminated glass and drawers.



Step 9: After installing the drawers, push them into the cabinet.

