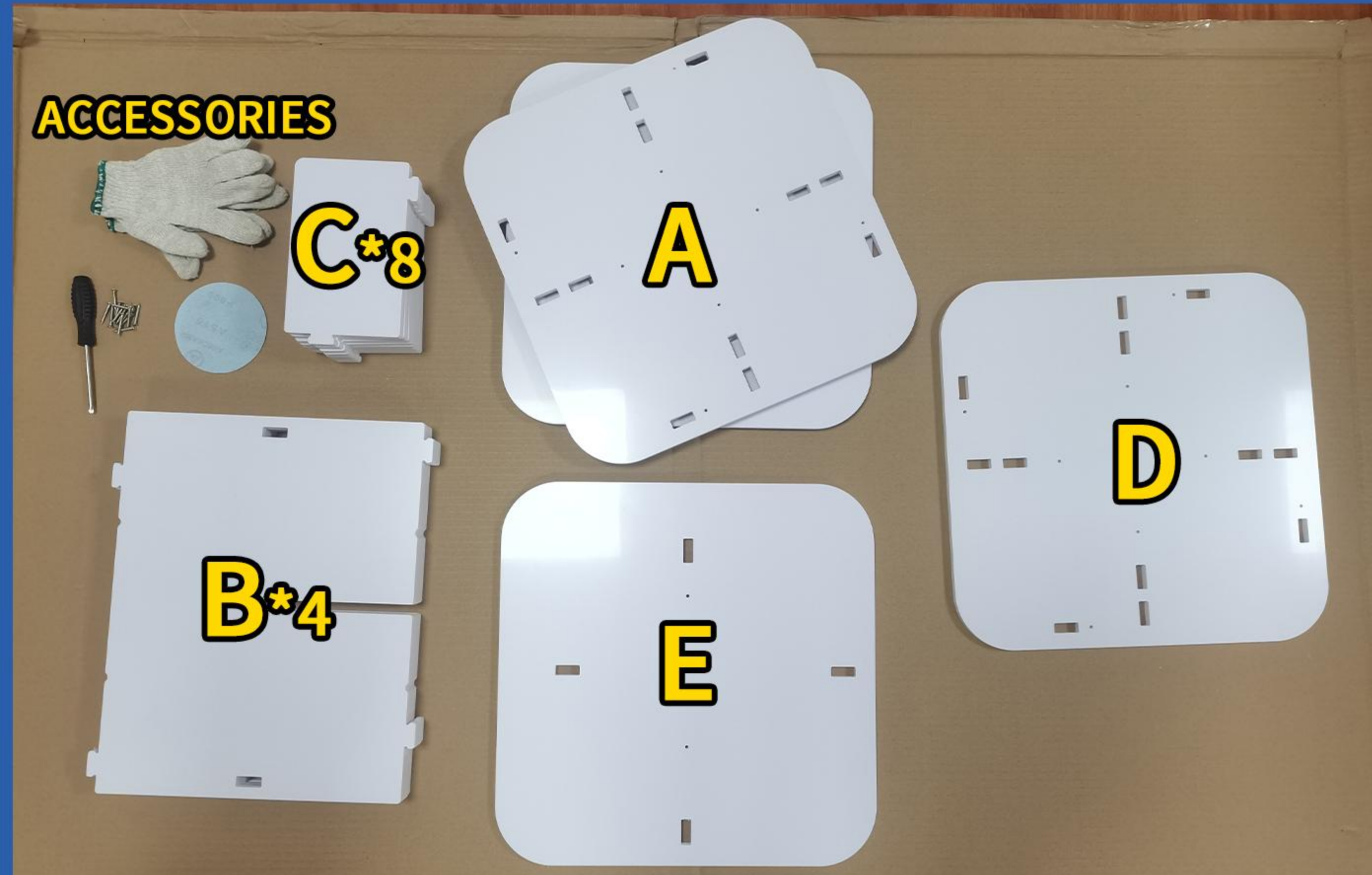


# SIMPLE SQUARE REVOLVING BOOKSHELF

## INSTALLATION INSTRUCTIONS AND PROCEDURES



**PLEASE WEAR PROTECTIVE GLOVES BEFORE ASSEMBLING**



**1.ASSEMBLE THE FIRST B PLATE**



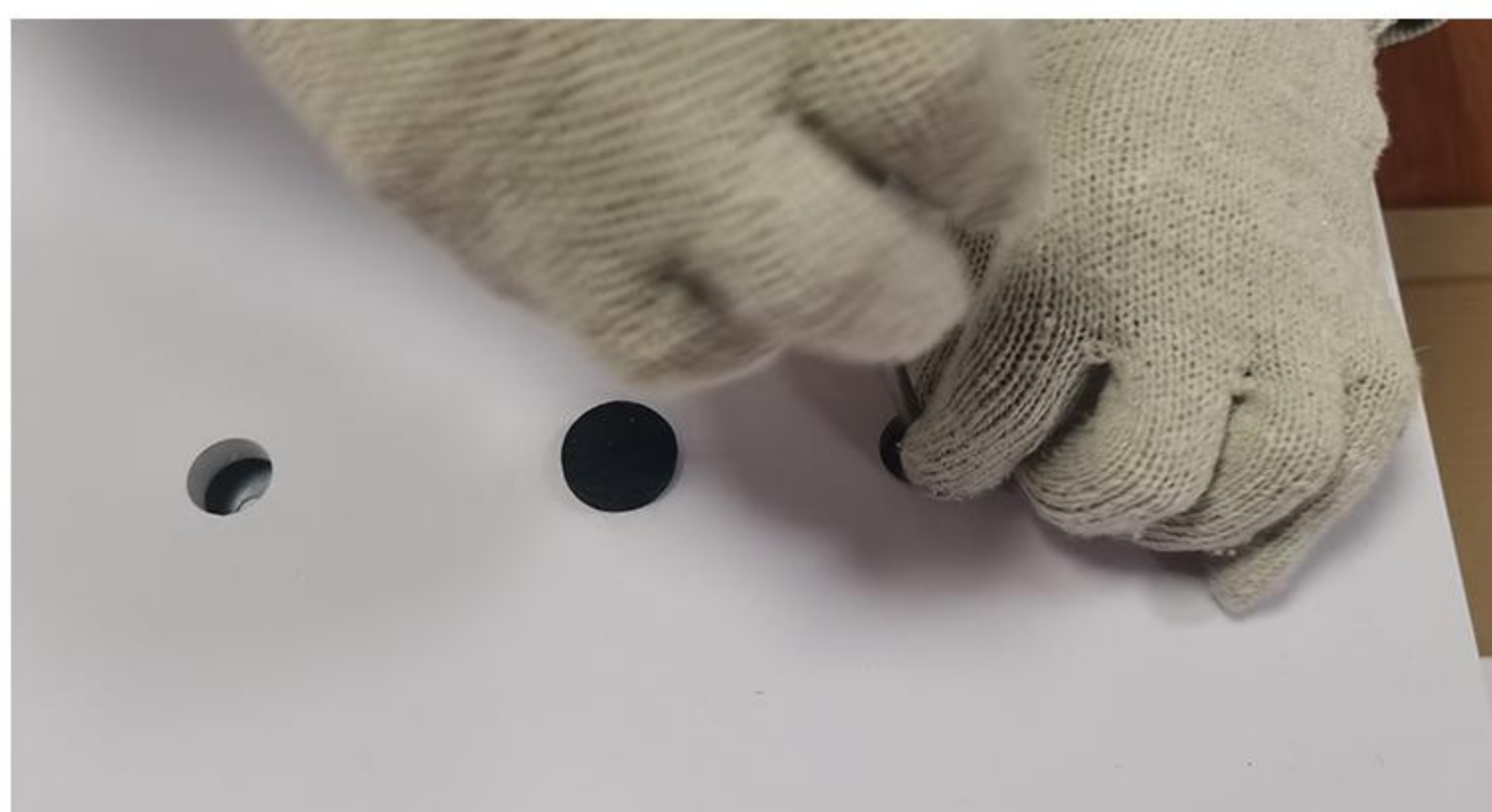
**2.ASSEMBLE THE SECOND B BLOCK**



**3.ASSEMBLE FOUR C PLATES**



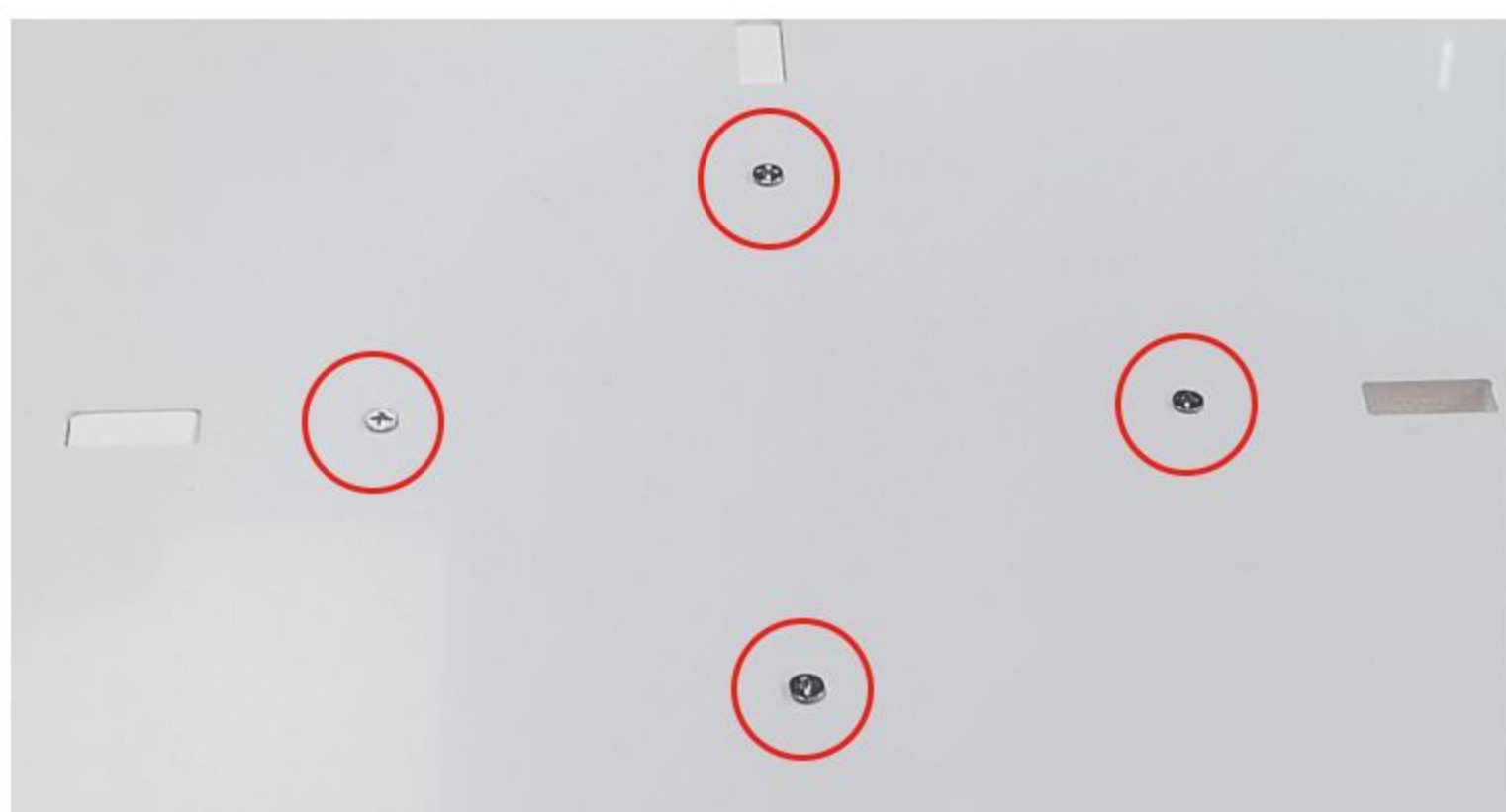
**4.TURN OVER AND SECURE A SCREW TO THE BOTTOM OF THE B BLOCK**



**5.ROTATE THE BOTTOM 90 DEGREES**



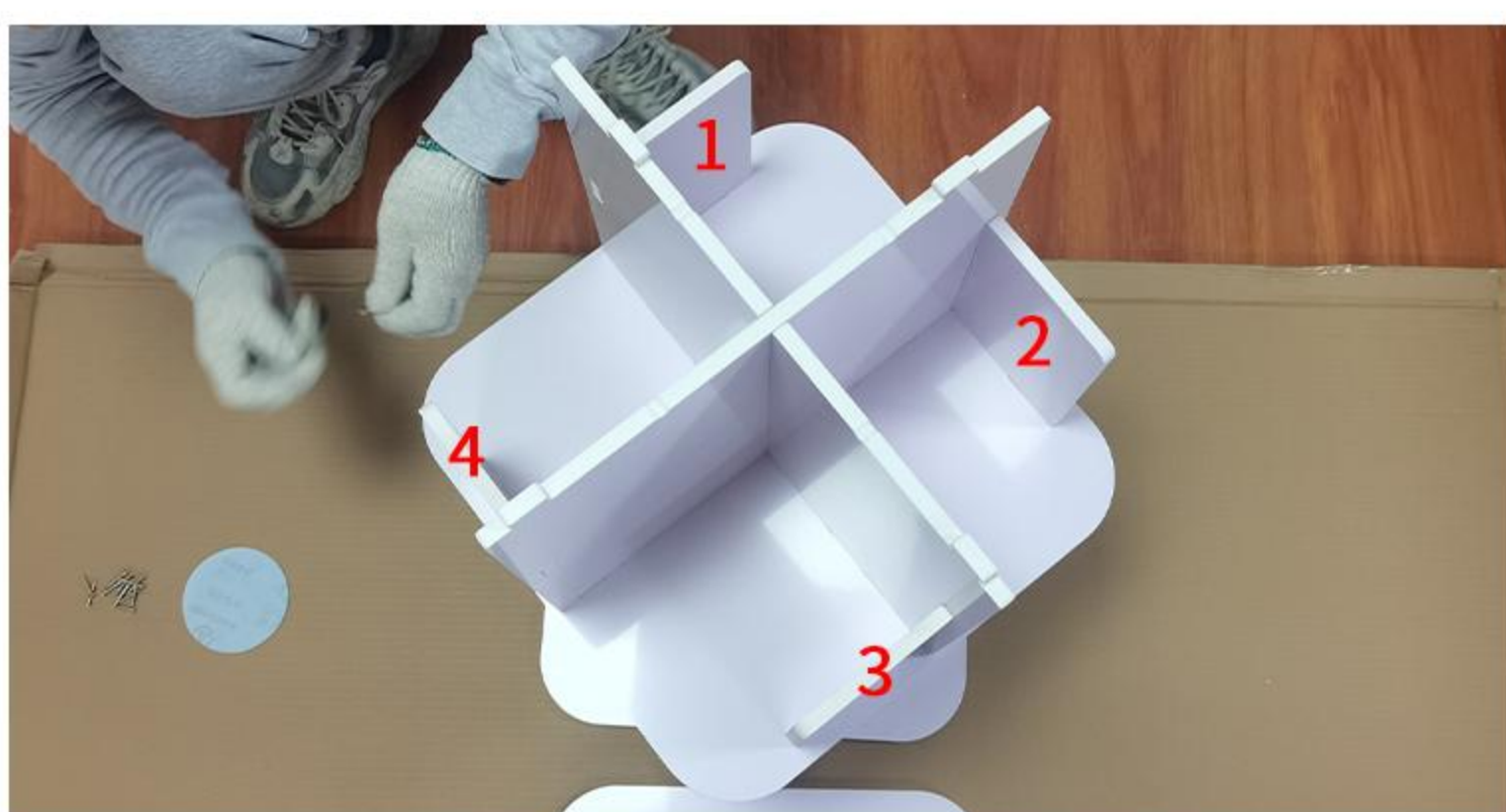
**6.ASSEMBLE THE D PLATE**



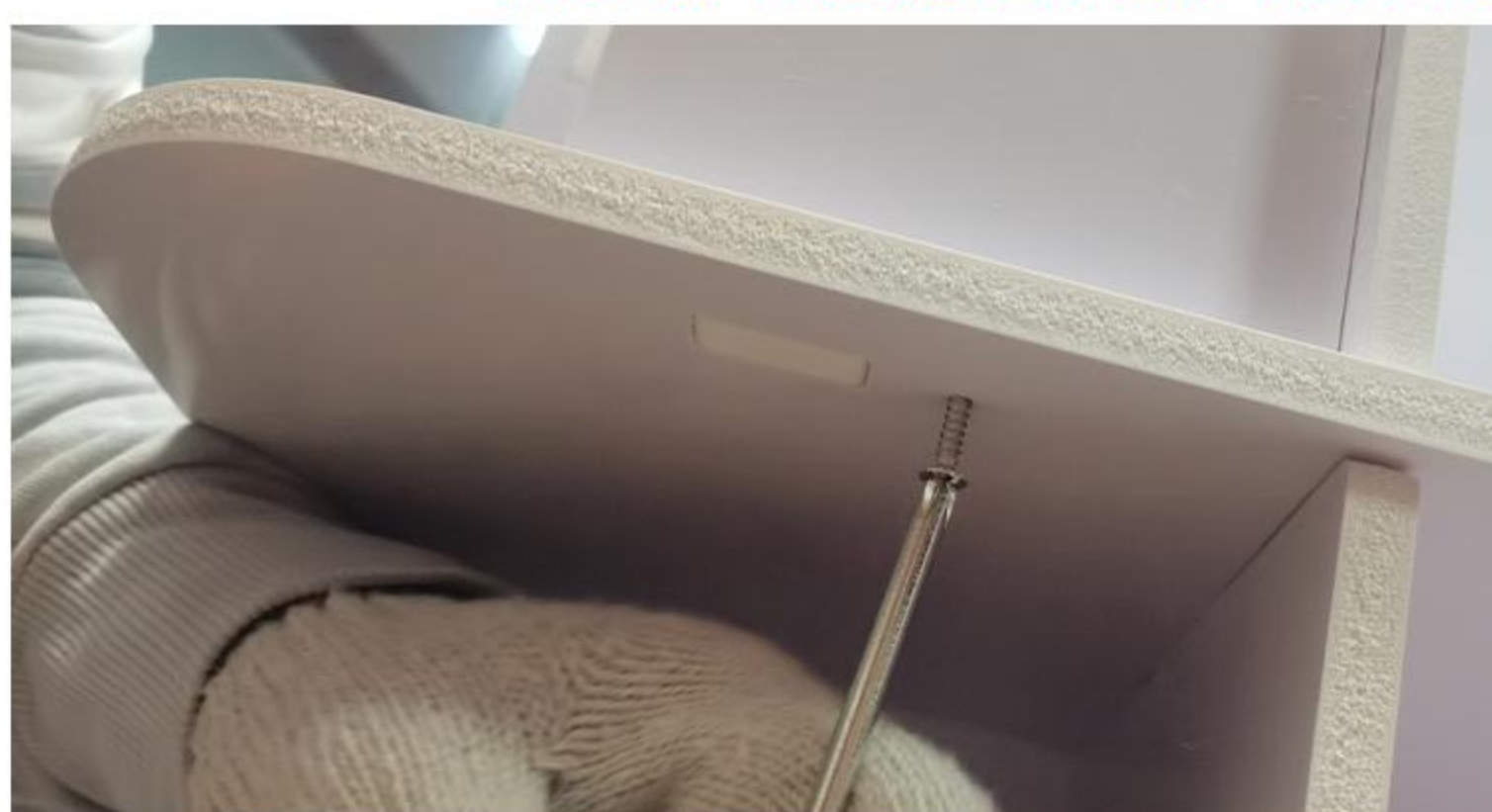
**7.SCREW THE D BLOCK IN PLACE SET SCREW**



**8.ASSEMBLE THE THIRD AND FOURTH B PLATES**  
**NOTE: THERE IS A GAP ON THE SIDE OF THE INVERTED ASSEMBLY**



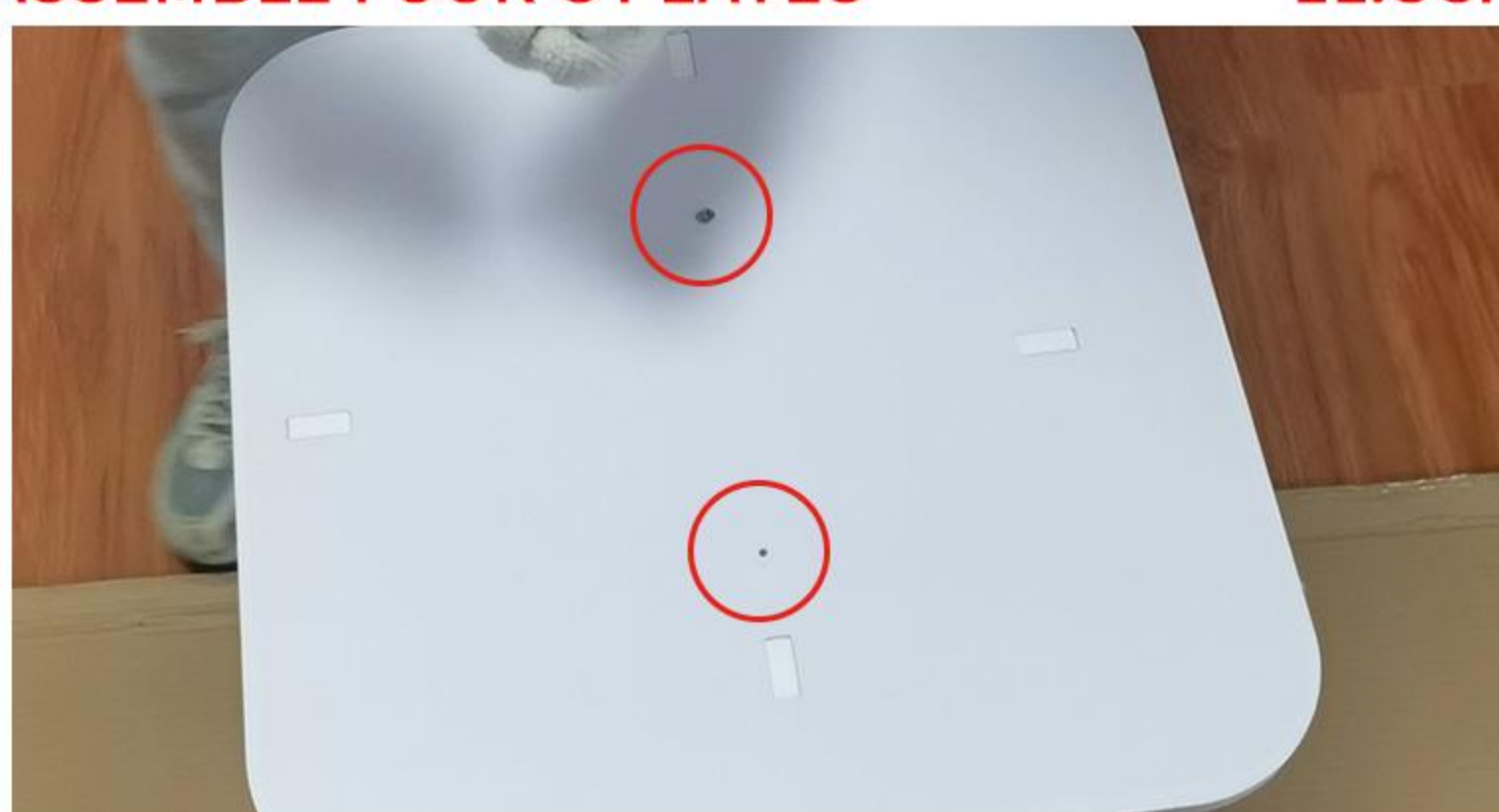
**10.ASSEMBLE FOUR C PLATES**



**11.SCREW THE C PLATE ON THE BOTTOM**



**12.ASSEMBLE THE E PLATE**



**13.FIX TWO SCREWS**



**14.IF THE EDGE IS SHARP, YOU CAN USE ABRASIVE PAPER TO POLISH THE EDGE**