

Mirror introduction

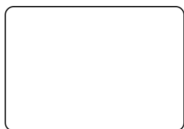


Installation Instruction

Before
Installation

- * Please make sure that the installed wall is a load bearing wall.
- * Please attention to avoid wires or water pipes when drilling.

Product and accessories



Mirror*1



Expansionscrew*2



Screw*2

Tools Needs (not included in the package)



Pencil



Electric Drill



Hammer



Tapeline

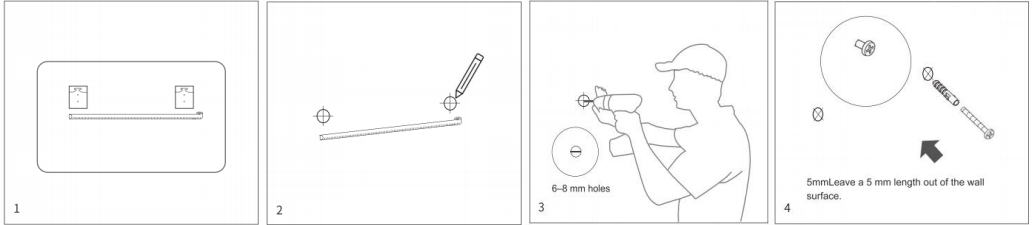


Level Ruler

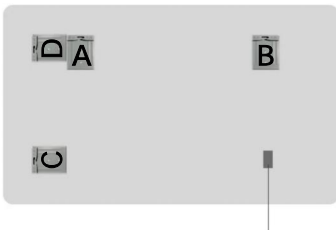


Screwdriver

Mirror introduction



1. Measure the hanger spacing Measure the distance between 2 hangers with a tape measure
2. Mark drilling locations Determine the specific locations of drilling with a tape measure, and mark it out with a pencil.
3. Drill holes with a percussion drill Drill 6-8 mm holes in the wall at marked locations with a percussion drill.
4. Put an expansion tube into each hole and put a screw into each tube Strike expansion tubes into drill holes with hammer and put screws into expansion tubes with a screwdriver. Leave a 5 mm length out of the wall surface



Please choose the installing direction:

- Hang horizontally with AB
- Hang vertically with CD

Affix the 3M adhesive tape from the accessory pack to the specified location.