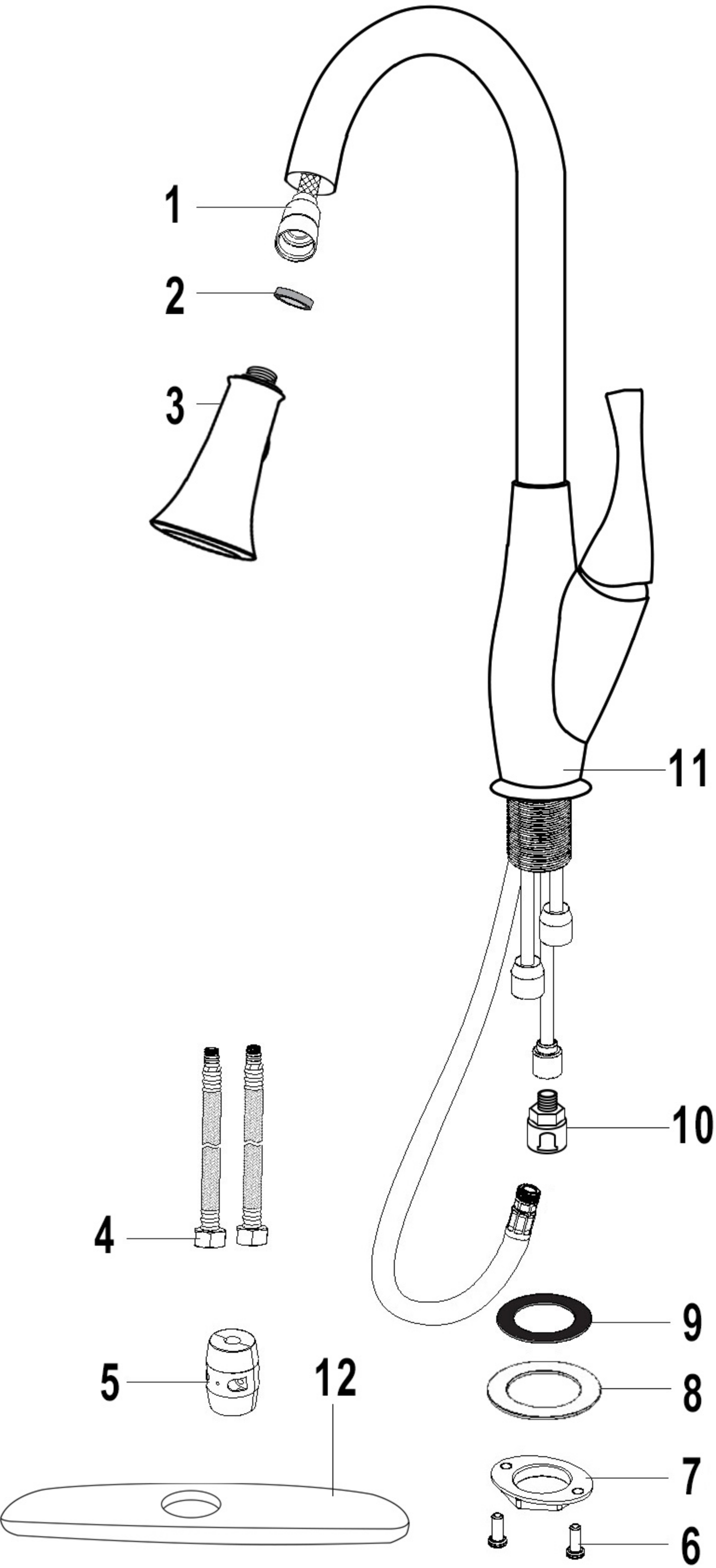
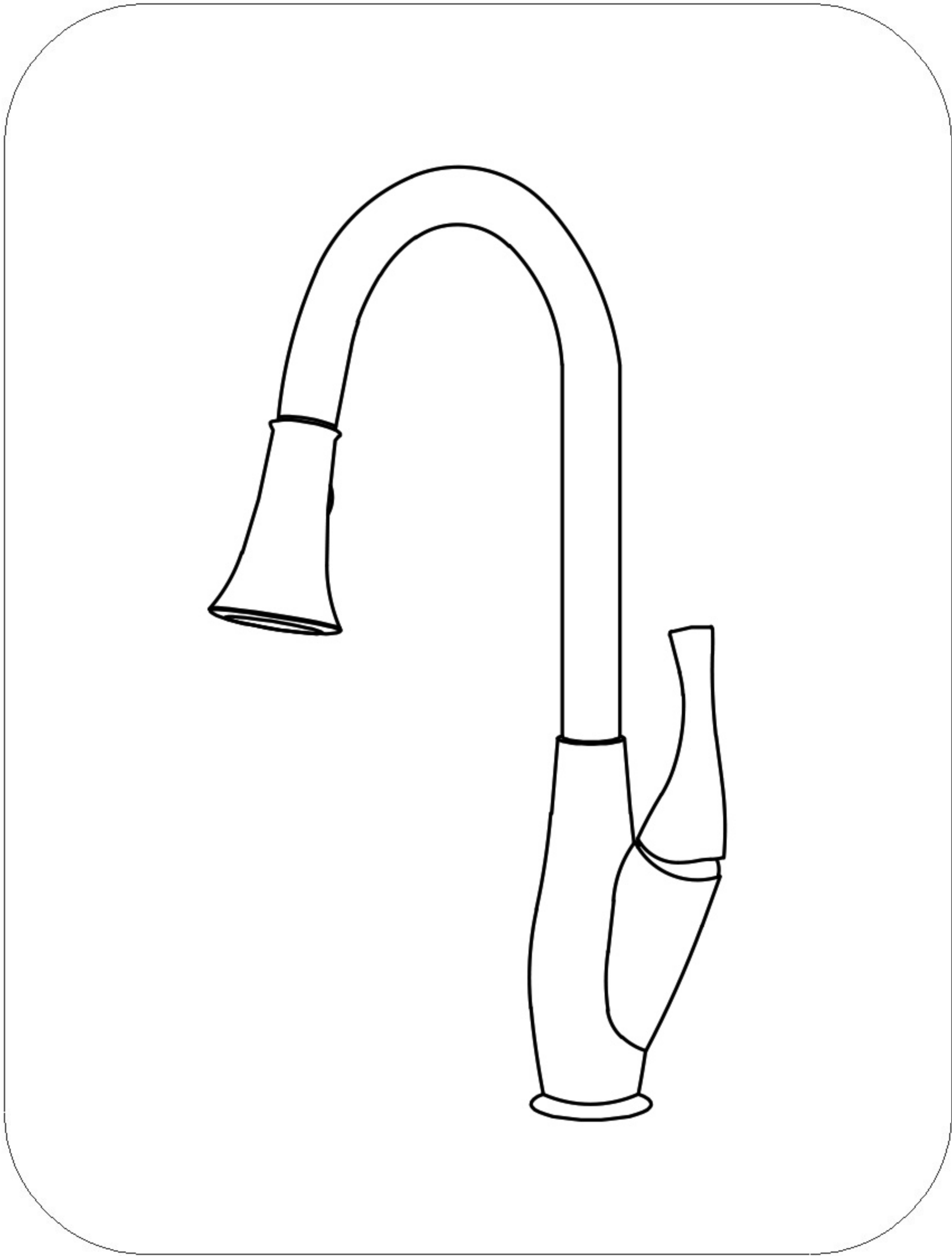


INSTALLATION INSTRUCTION



NO.	PART NAME
1	Shower hose
2	Washer
3	Spray
4	Flexible hose
5	Weight
6	Screw
7	Lock nut
8	Gasket
9	Washer
10	Quick connector
11	Body
12	Deck Plate

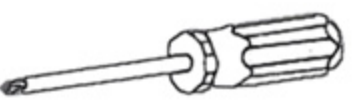



SINGLE LEVER KITCHEN FAUCET

Tools You Will Need:


Plumber's putty


Pipe tape


Philips Screwdriver


pliers


Adjustable wrench


Allen key

!
WARNING:
Please keep the
tools for future
use!

Notice:

1.Cleaning

Before installation, shut off the water supply valves and clean up the water supply system.

2.Mounting hole

Make sure the mounting hole size is between $\varnothing 33\text{mm}$ - $\varnothing 35\text{mm}$ as show in the diagram.

3.Protection

Clean the area of the mounting holes before installation.

To preserve the delicate finish of the faucet,please do not scratch, but use a soft cloth to wipe around it.

Do not tighten the faucet too hard,so as to avoid deformation of fracture.

Parameter:

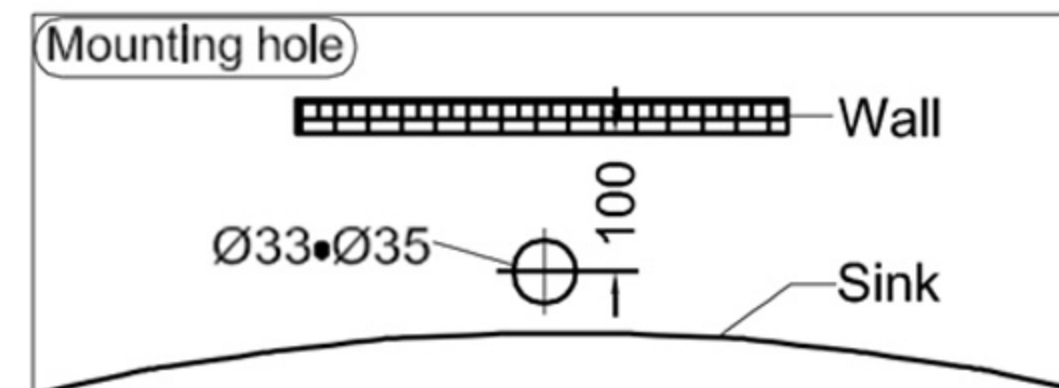
1.Water pressure

Min:0.05Mpa

Max:0.75Mpa

2.Temperature of water supply $\leq 85^{\circ}\text{C}$

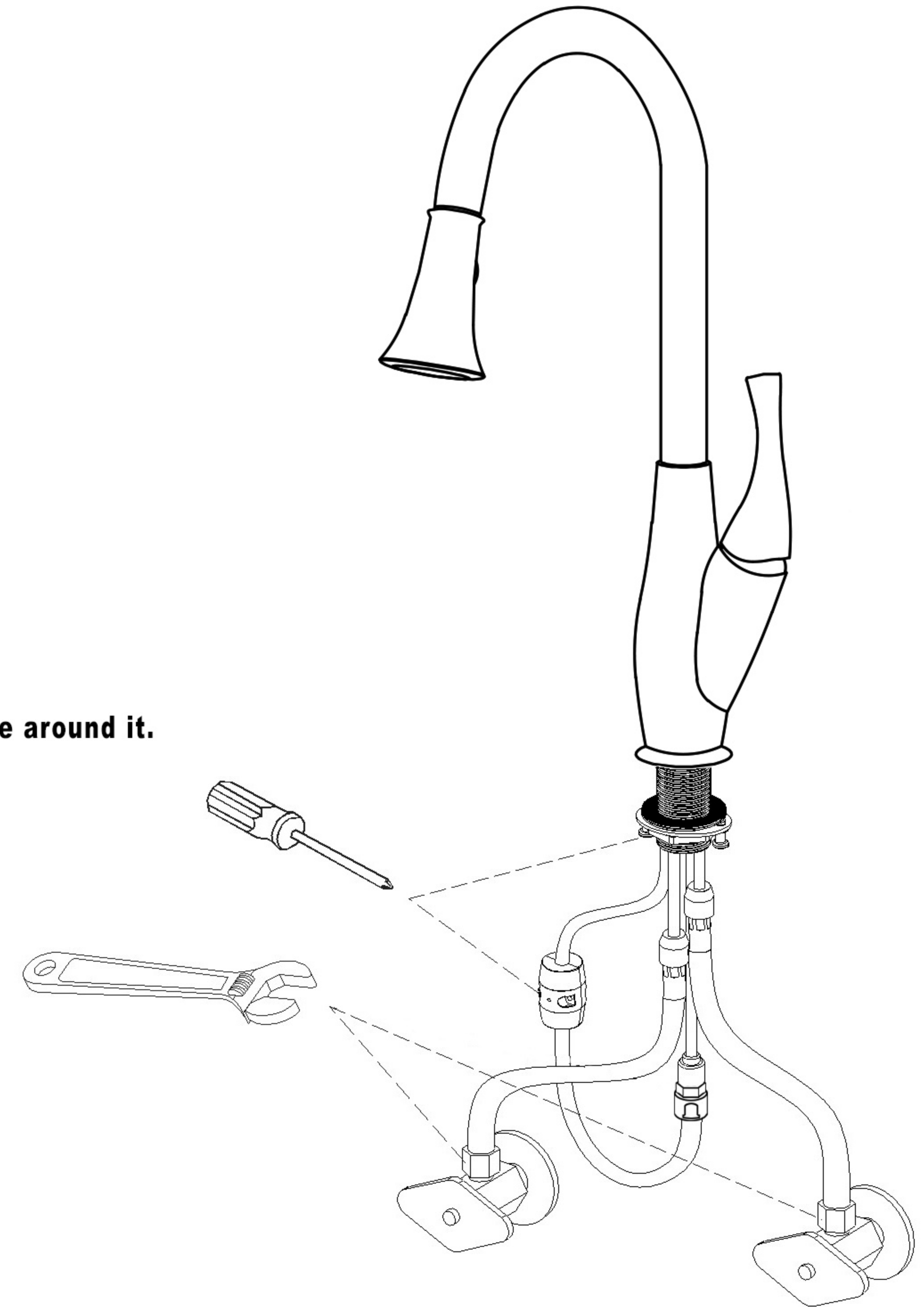
3.Working Temperature $\geq 20^{\circ}\text{C}$



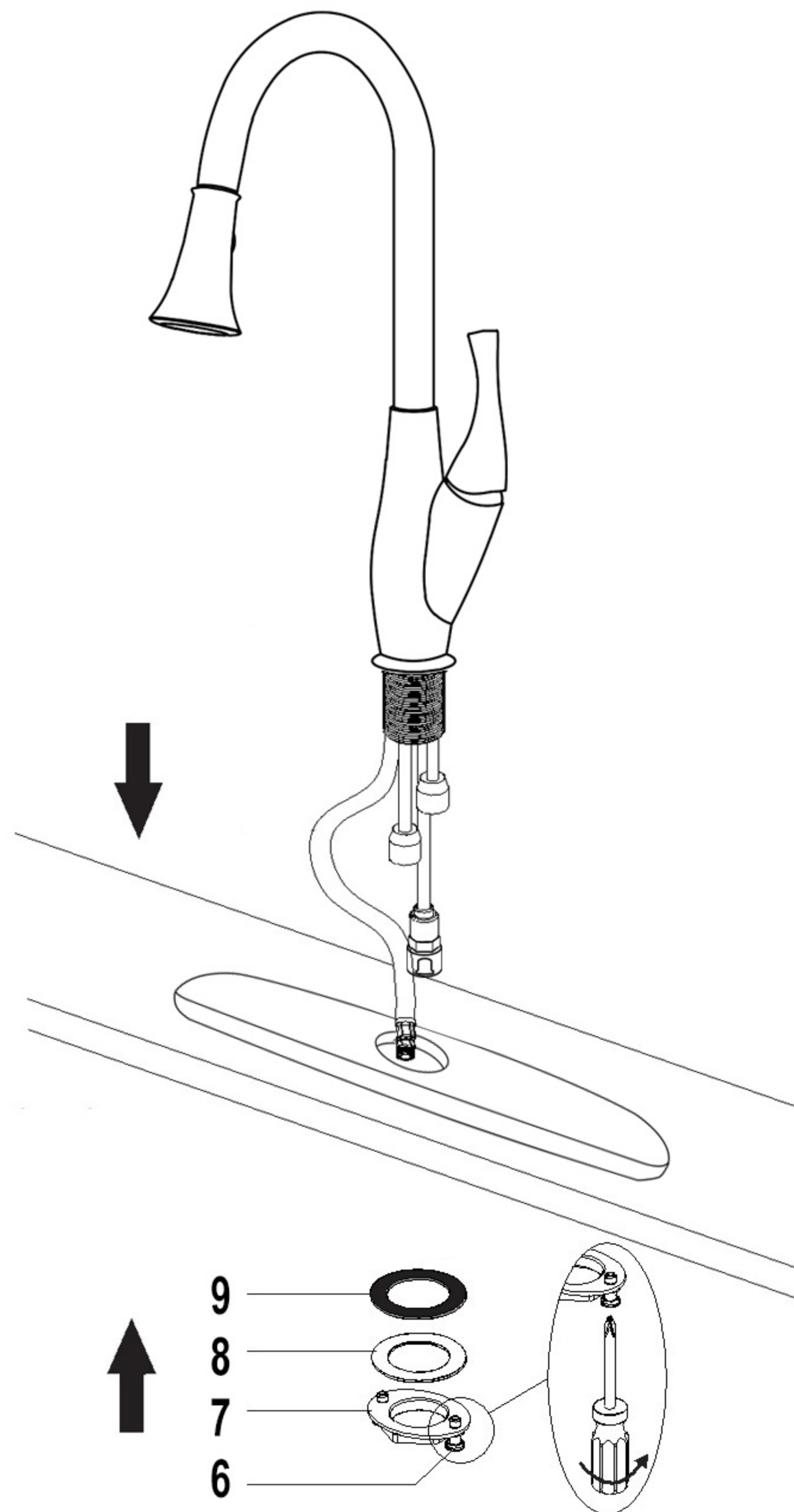
Attention:

for easy installation, you will need:

- 1.To read all the installation instruction completely before beginning.
- 2.To read all the warning, attention and maintenance information.
- 3.To purchase the proper supply lines.

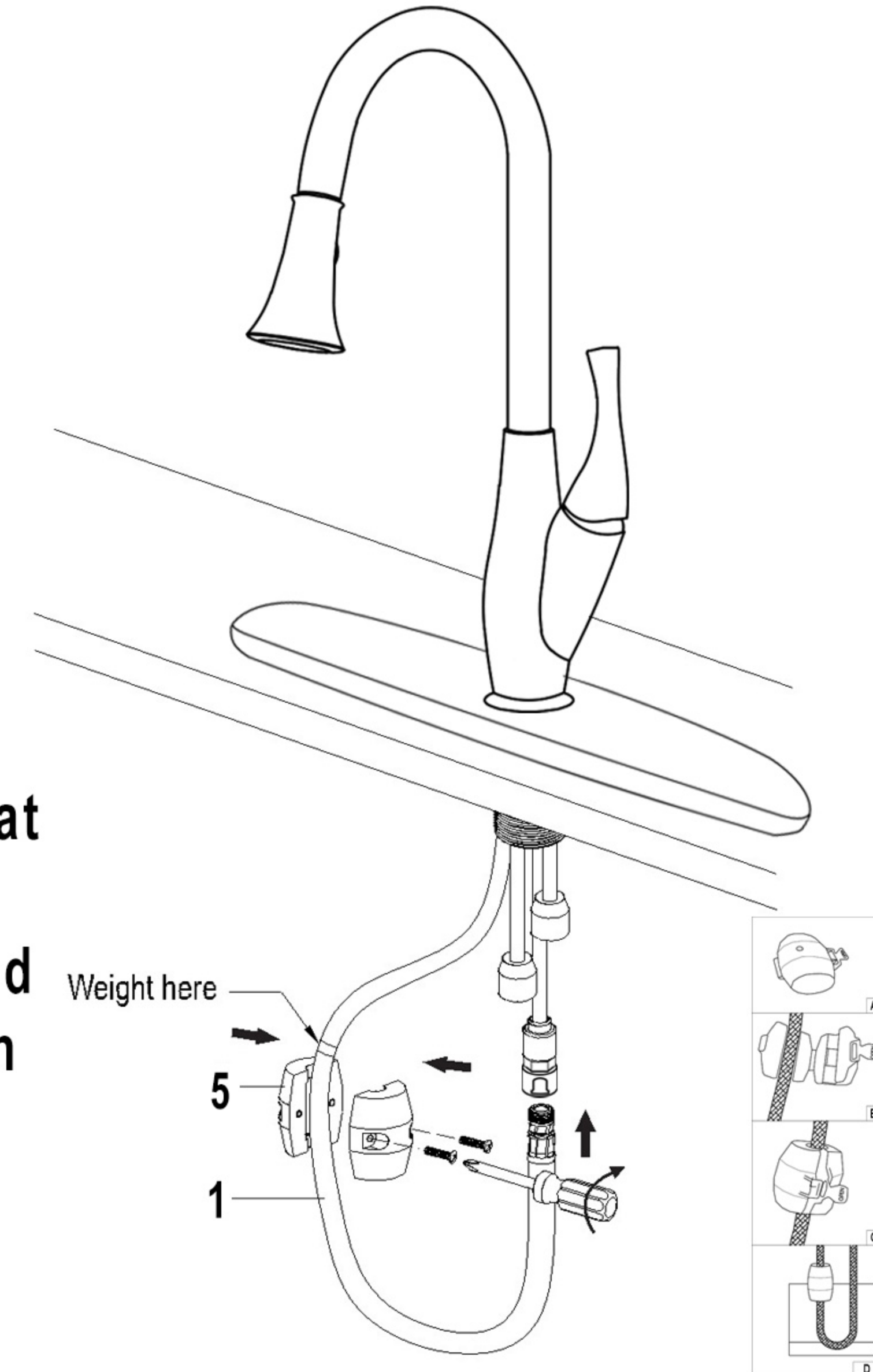


1



1. Put the faucet into the installation hole.
Put the washer and gasket on the lock nut as shown, then tighten with screws.
(Suggestion: diameter 35MM for installation hole)

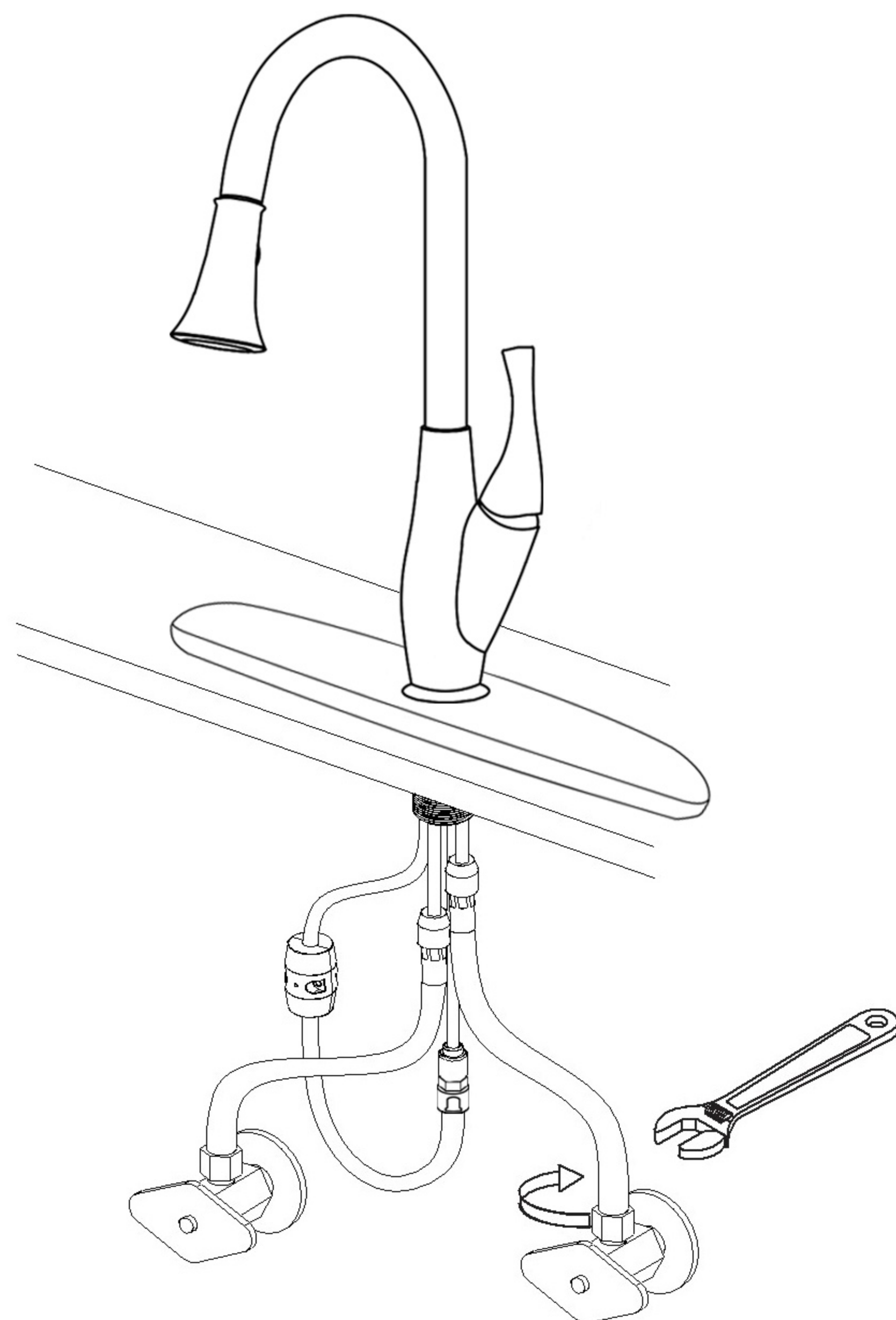
2



Note: To make sure that the pull out hose go back smoothly, you need to adjust the weight in right position

2. Connect the shower hose to quick connect.
Dis-assemble the weight and put it on the shower hose.
Then fix screws by screw driver.
(Caution: make sure the hose is properly engaged and secured in the quick connect)

3



3. Connect the flexible hoses to water supply valve, and tighten it with adjustable wrench. Don't over tighten avoiding damage the washer.

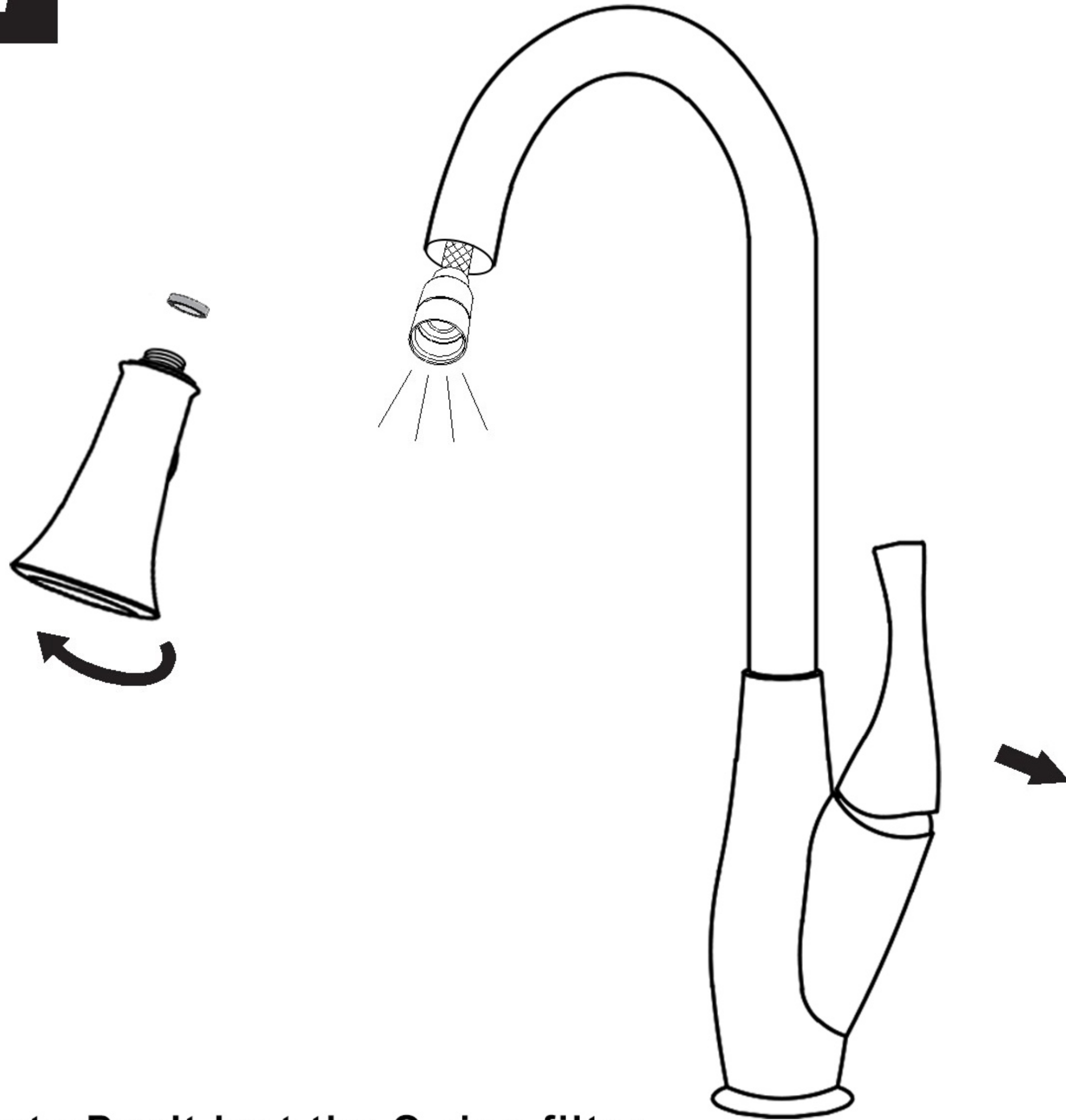


Warning: The supply valves are not included, please purchase them in plumbshop.

Maintenance:

1. Operate the faucet gently in order for a sustainable use.
2. Always blot dry any water from faucet surface. Clean with a damp non-abrasive sponge and wipe it with a clean soft cloth should be helpful to maintain good finish of the faucet. To remove water spots, apply warm water and a soft cloth. Make certain to rinse thoroughly with water immediately after cleaner.
3. Although the finish is extremely durable, it can be damaged by some cleaners. Do not use detergent powder, polishing powder, granular detergent or nylon brush to clean.
4. Do not use acidic detergents. If happened, it must be rinsed properly and wiped dry with a soft cloth.
5. When the air temperature is below 0°C, heating solution in the house is a must.
6. Shut off the water supply valves while it will not be in use for a long time.
7. We reserve the right to make revisions in the design of faucets without notice.

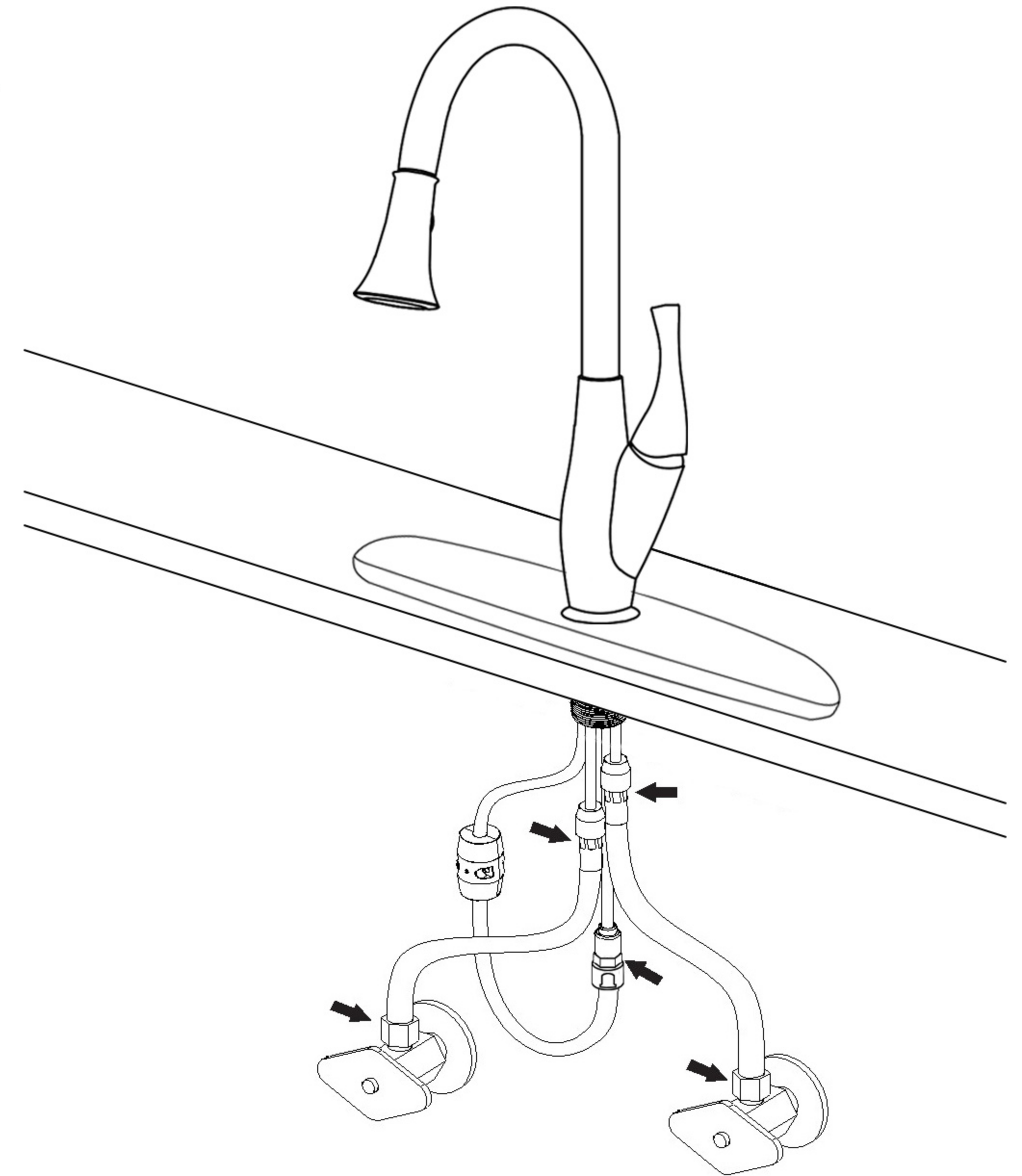
1



Note: Don't lost the O-ring filter.

1. Remove the shower by hand. Turn the faucet handle all the way on, turn on hot and cold water supply and flush water lines for one minute. Reinstall shower by hand.

2



2. Check all connections at arrows for leaks, re-tighten it if necessary.



BUT DON'T OVER TIGHTEN