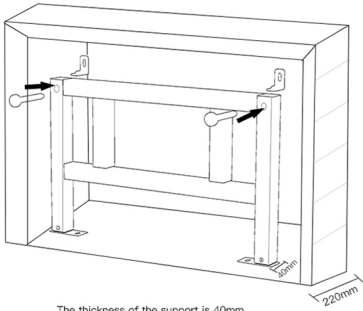


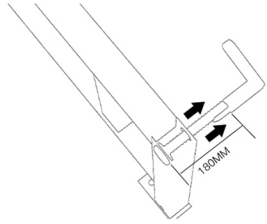
Wall Hung Toilet Combo

Installation Manual

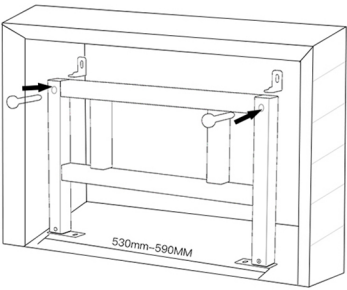




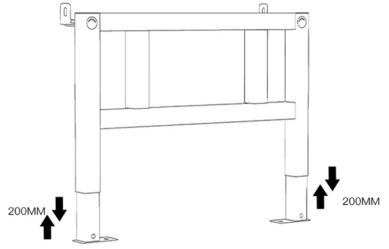
The thickness of the support is 40mm
 (plus 110mm sewage pipe, 160mm-170mm can be reserved)



Align the screws with the fixing frame
 The toilet fixing screw lever is 180mm away



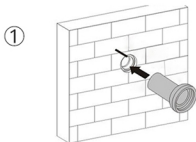
The width of the support is 530mm, and the width can be reserved for about 590mm



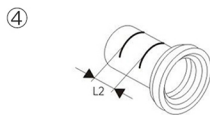
Loosen the screws and adjust the height of the frame

Toilet shall be installed 22 cm from tile finish

Wall mounted toilet installation



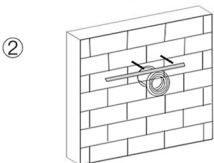
1 Insert the toilet drain straight pipe into the toilet drain pipe on the tiled wall as shown in Figure 1.
Note: Make sure to insert it in place!



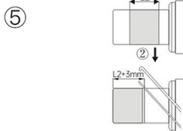
2 After drawing the assembly line between the toilet drain straight pipe and the toilet drain pipe and the wall mounted toilet drain outlet, mark the actual size (which is the excess part), as shown in Figure 2.



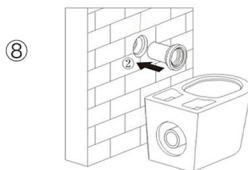
3 Measure the actual size of position d of the toilet as shown in Figure 3. Install one bolt on each side into the toilet and add 25mm after measuring the size, as shown in Figure 3.



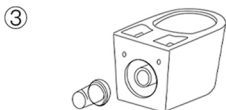
4 Block the toilet drain pipe with a vertical wooden board in an appropriate position and draw a line with a pencil. After the line is drawn, it needs to be pulled out, as shown in Figure 4.



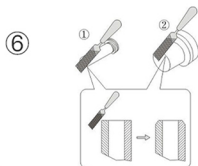
5 Move the excess part of the middle size of the toilet drain pipe to the edge, add 5mm before sawing it off, as shown in Figure 5.



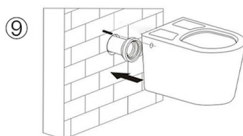
6 Insert the toilet drain straight pipe into the toilet drain pipe opening on the wall as shown in Figure 6.
Note: Make sure to insert it in place!



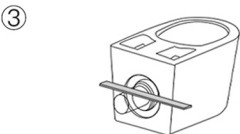
7 Insert the toilet drain straight pipe and rubber ring into the wall mounted toilet drain outlet as shown in Figure 7.
Note: Make sure to insert it in place!



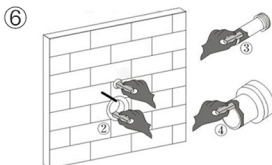
8 the drainage pipe rubber ring as shown in Figure 8. the toilet inlet straight pipe as shown in Figure 8. the toilet discharge straight pipe as shown in Figure 8.



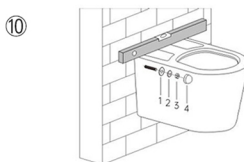
9 Align the bolts on both sides with the toilet installation holes, align the toilet inlet straight pipe with the water tank L pipe, align the toilet drain straight pipe and rubber ring with the toilet drain outlet, and then insert them, ensuring that they are inserted in place.



10 Block the toilet drain pipe with a vertical wooden board in an appropriate position and draw a line with a pencil. After the line is drawn, it needs to be pulled out, as shown in Figure 10.



11 the drainage pipe rubber ring as shown in Figure 11. the toilet inlet straight pipe as shown in Figure 11. the toilet discharge straight pipe as shown in Figure 11.



12 Decorative gaskets (as shown in Figure 1), gaskets (as shown in Figure 2), nuts (as shown in Figure 3), bolt decorative sleeves (as shown in Figure 4), and two bolts each can be installed on both sides. Make sure to measure the toilet with a flat water ruler (parallel).