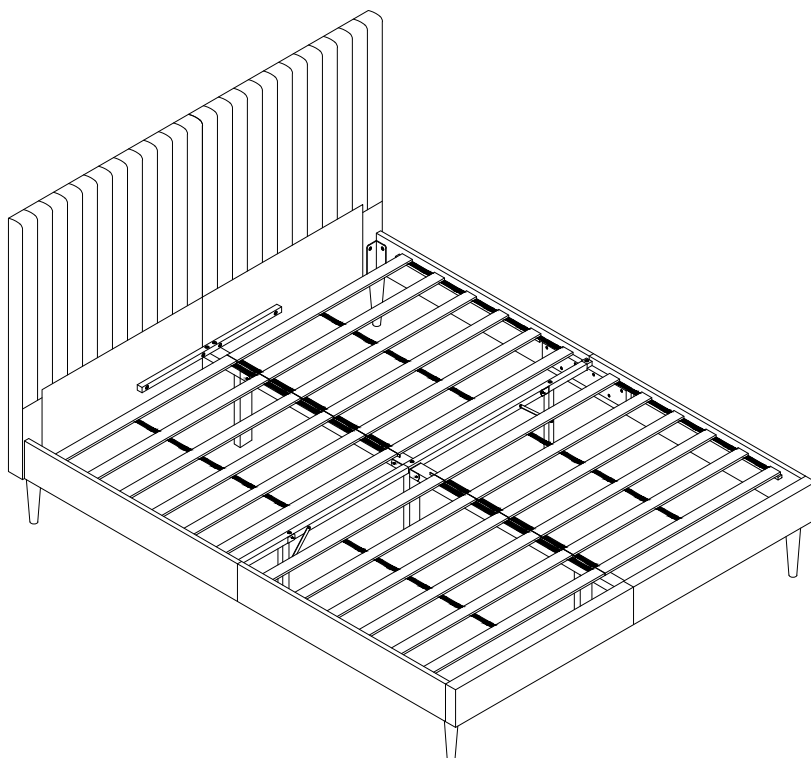


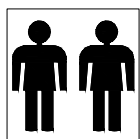
# ASSEMBLY INSTRUCTION



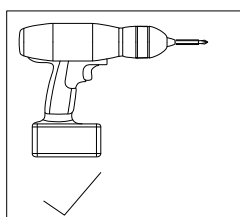
Please TEAR OFF this shrink film from side!  
DO NOT USE CUTTER!

## IMPORTANT NOTE

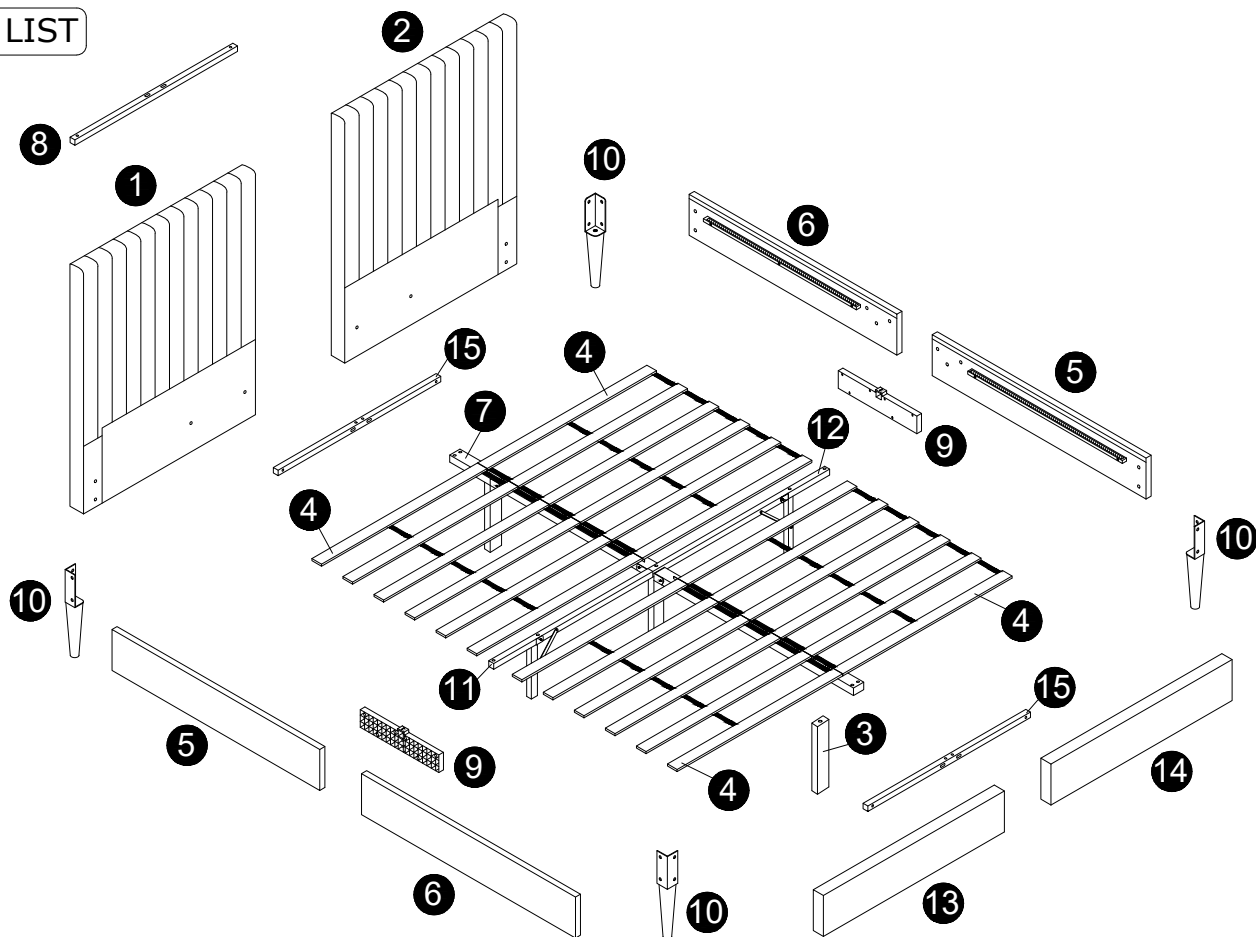
1. FOR THE PROTECTION OF YOUR FURNITURE, PLACE ALL PARTS ON A CLEAN AND SMOOTH SURFACE TO PREVENT ANY DAMAGE.
2. DO NOT USE POWER TOOLS TO ASSEMBLE THE BED.
3. PLEASE PERIODICALLY CHECK ALL FITTINGS AND RE-TIGHTEN AS NECESSARY.
4. DO NOT USE THE BED UNLESS ALL BOLTS AND SCREWS ARE FIRMLY SECURED.
5. NEED PARTS OR ASSISTANCE? EMAIL US
6. YOU CAN ASSEMBLE IT WITH OUR PACKAGING TOOLS OR WITH A.



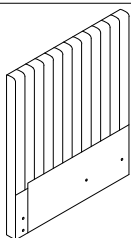
Minimum two  
person assembly



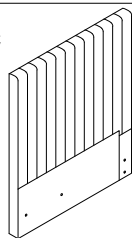
# PART LIST



1 x 1pc



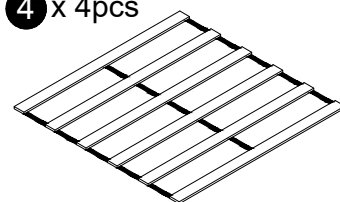
2 x 1pc



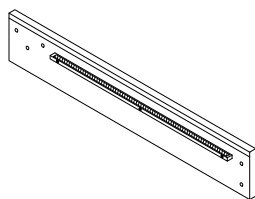
3 x 1pc



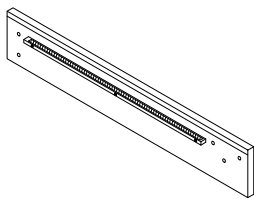
4 x 4pcs



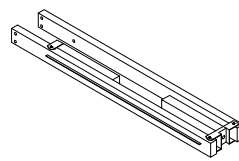
5 x 2pcs



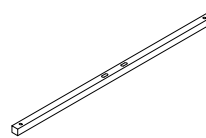
6 x 2pcs



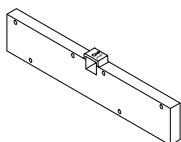
7 x 1pc



8 x 1pc



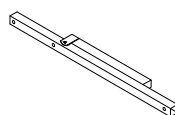
9 x 2pcs



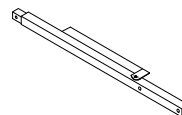
10 x 4pcs



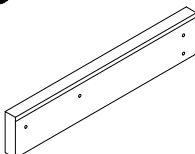
11 x 1pc



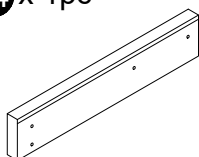
12 x 1pc



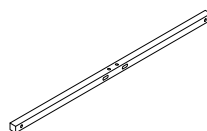
13 x 1pc



14 x 1pc



15 x 2pcs



## HARDWARE LIST



**H1** M5 x 1pc



**H2** M8x20mm x 16pcs



**H3** M8x50mm x 18pcs



**H4** M8x40mm x 16pcs



**H5** M8 x 39pcs

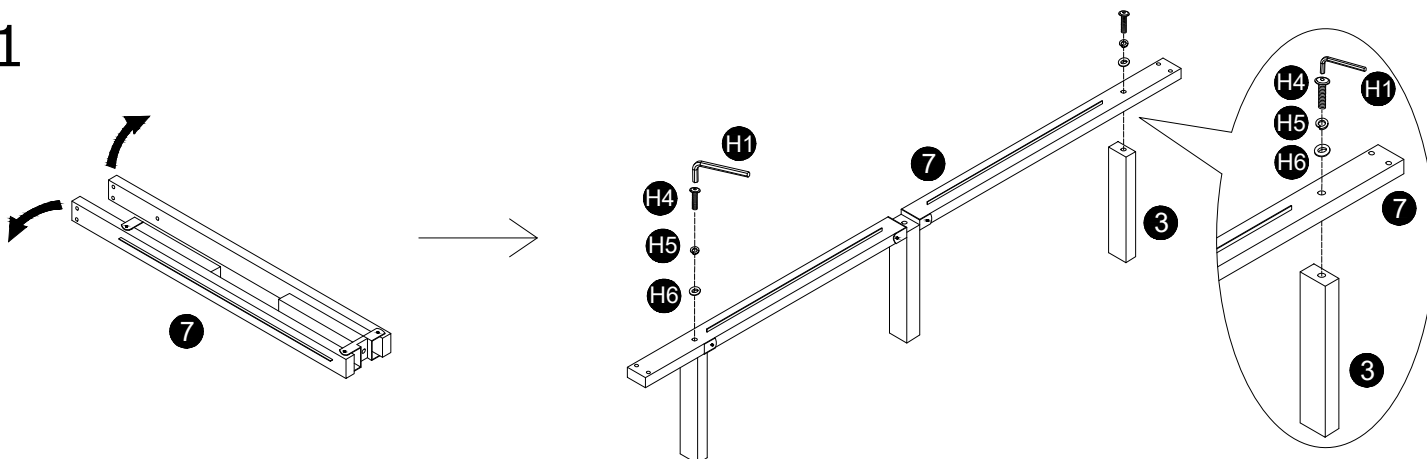


**H6** M8x17mm x 51pcs

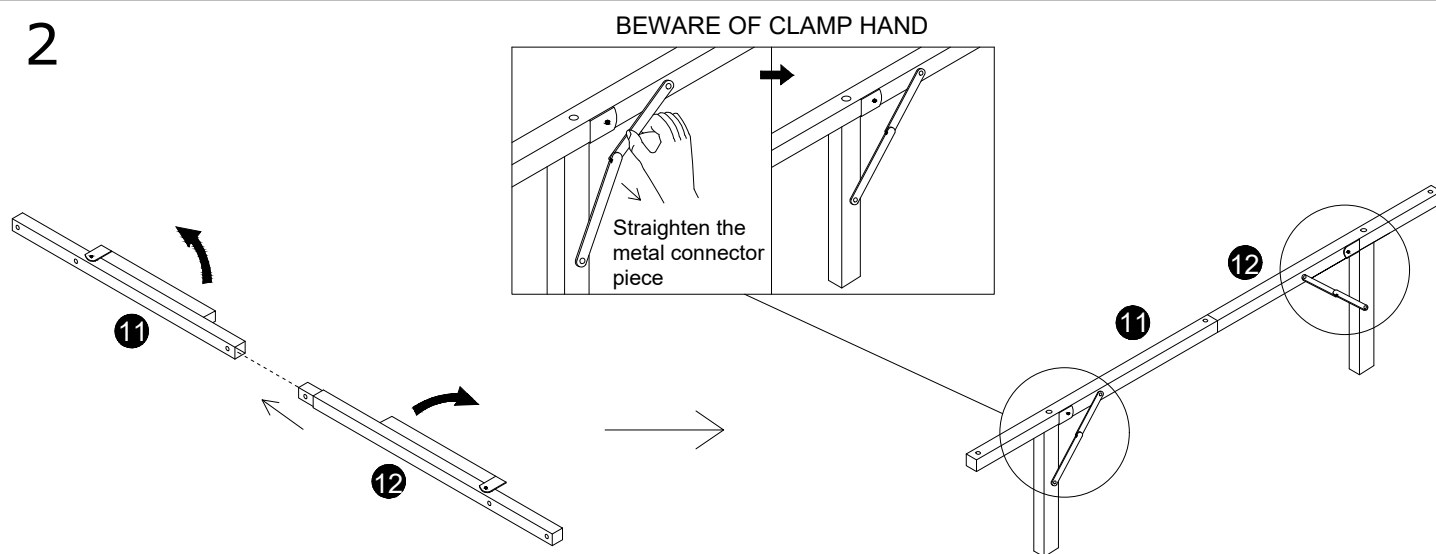


**H7** M8x60mm x 1pc

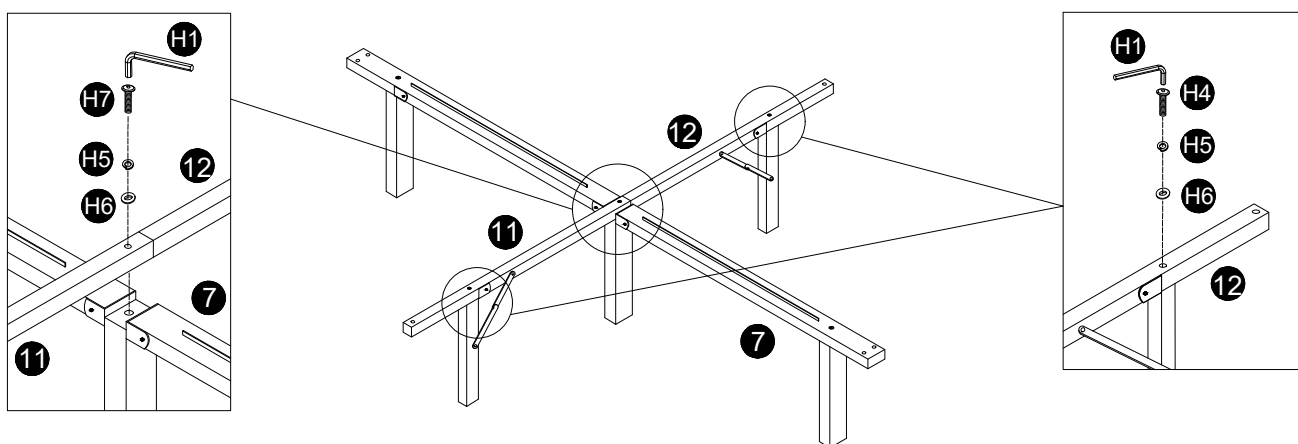
1



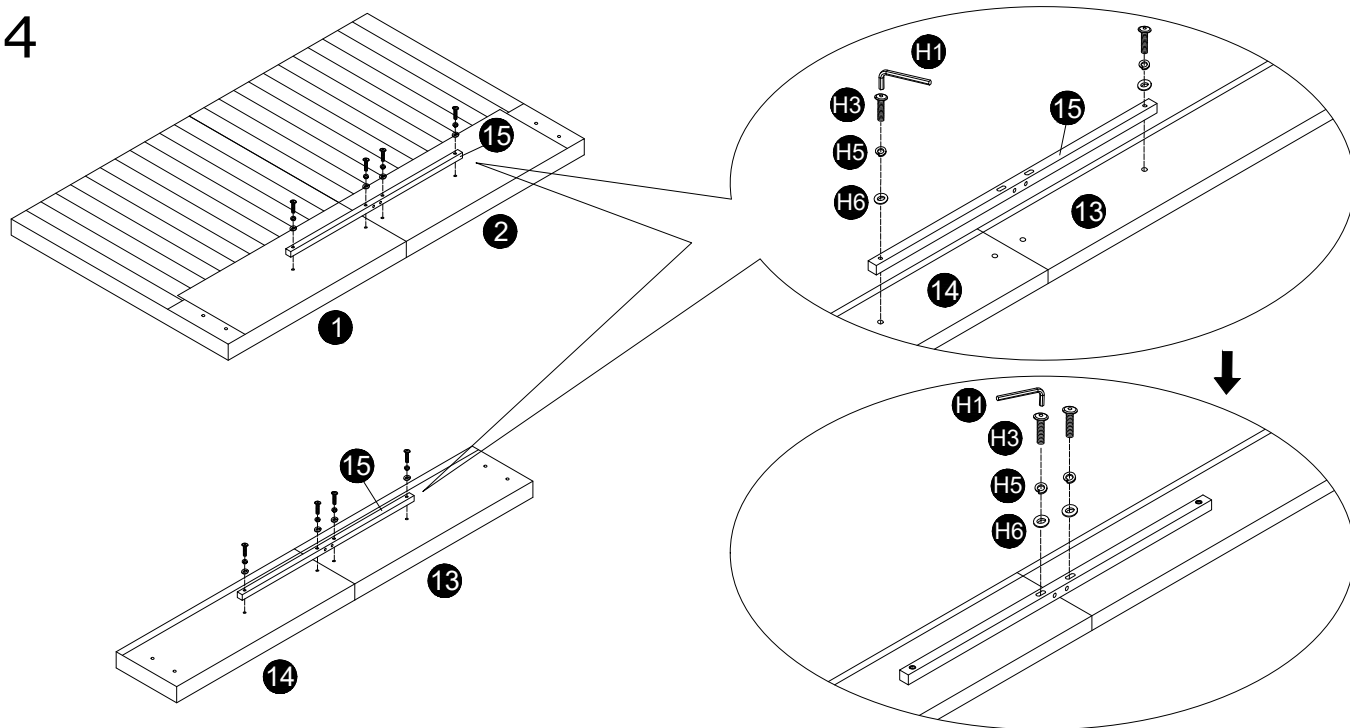
2



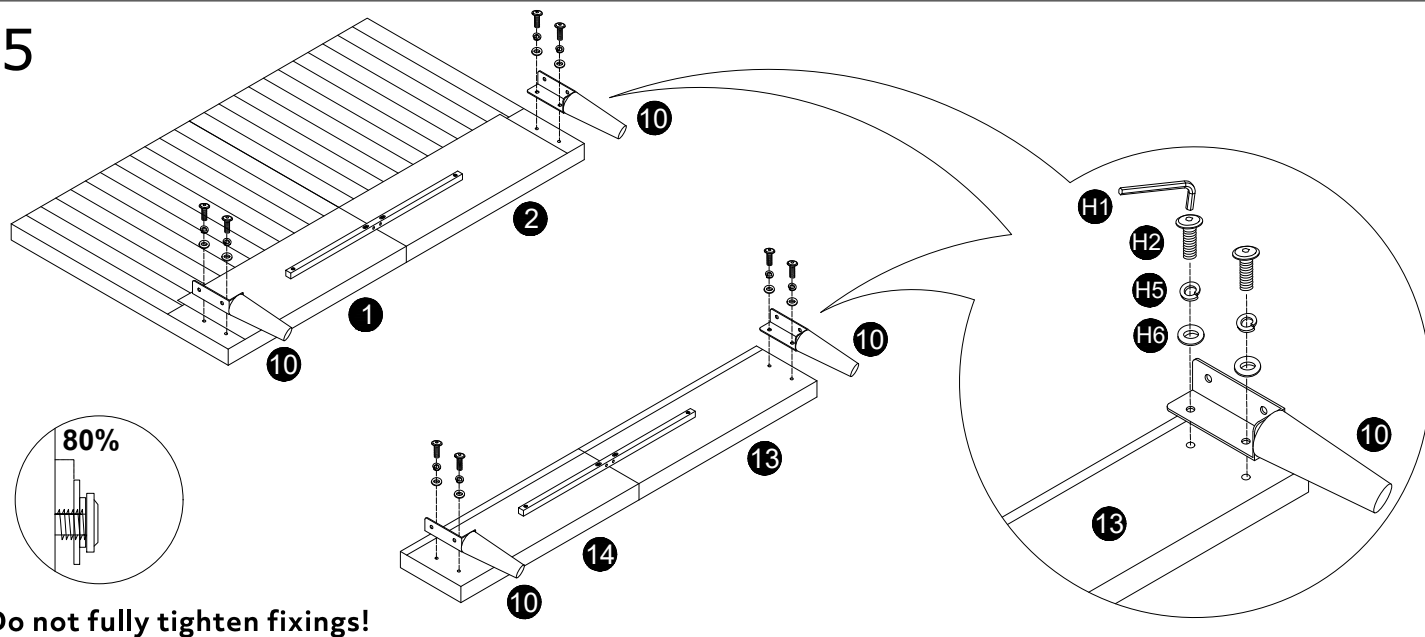
3



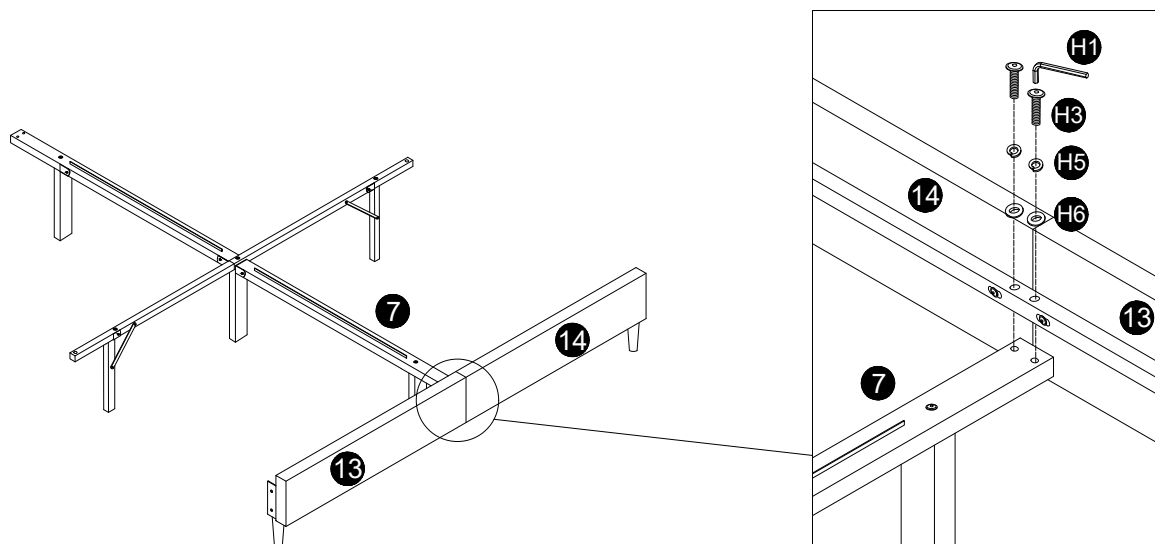
4



5

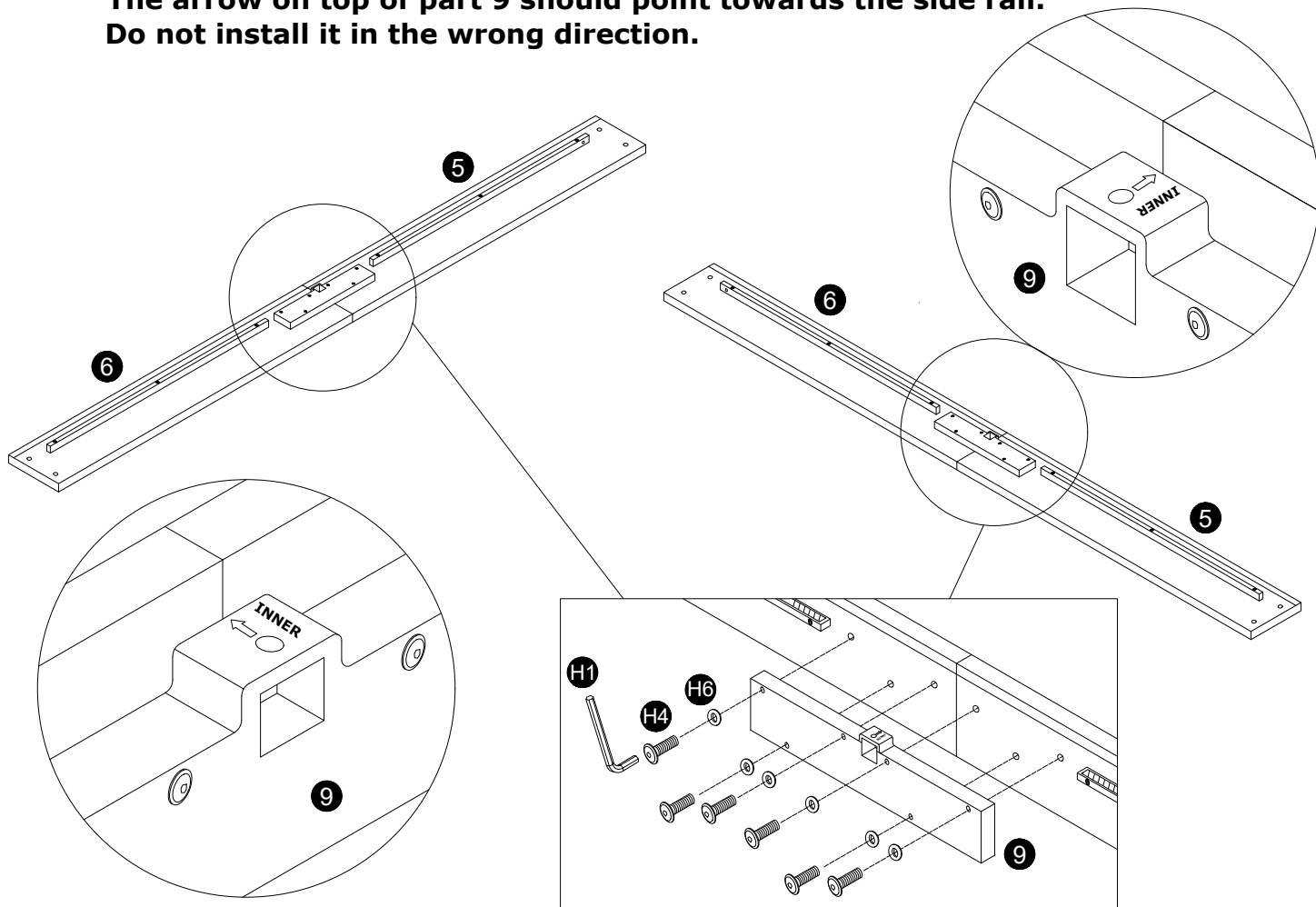


6

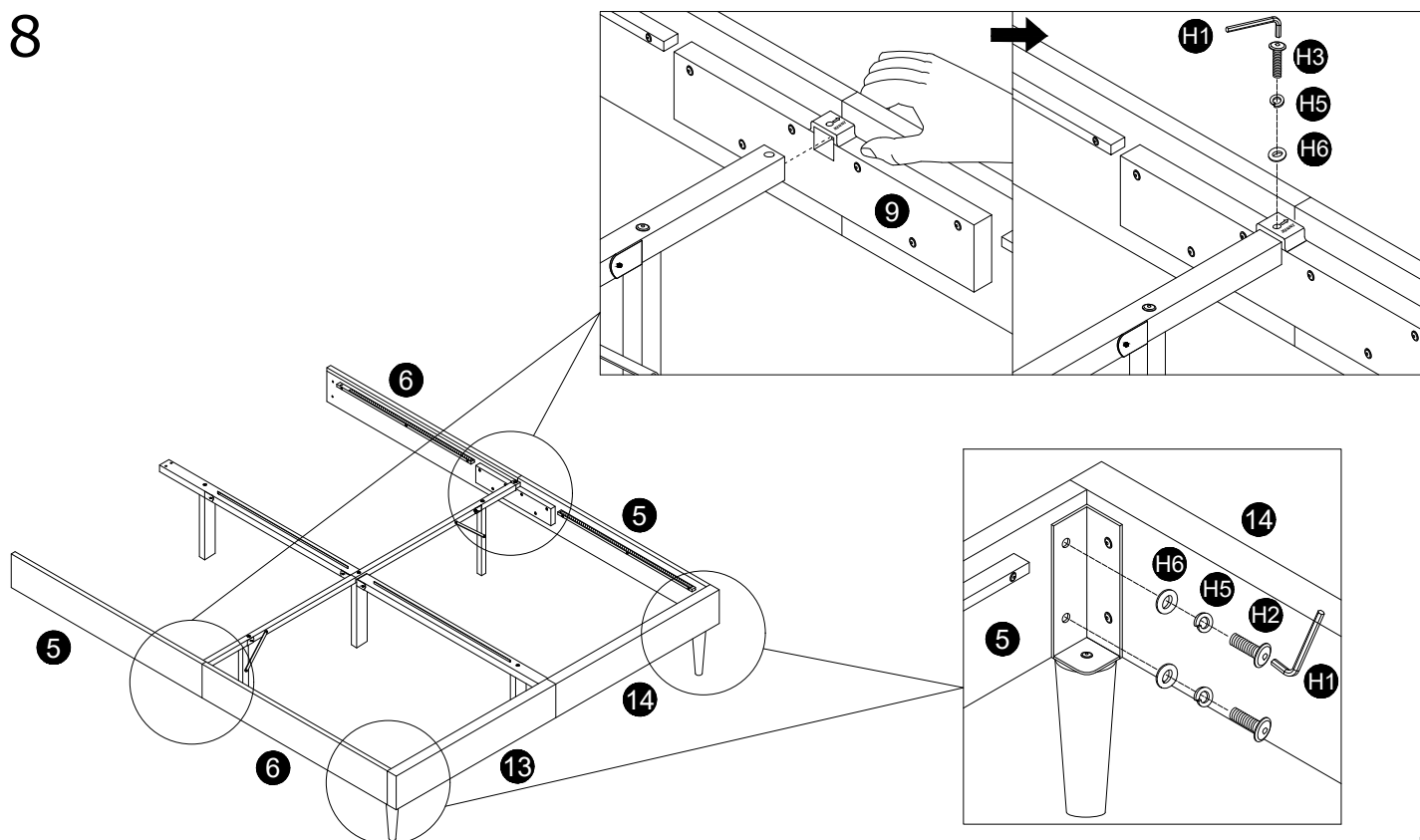


7

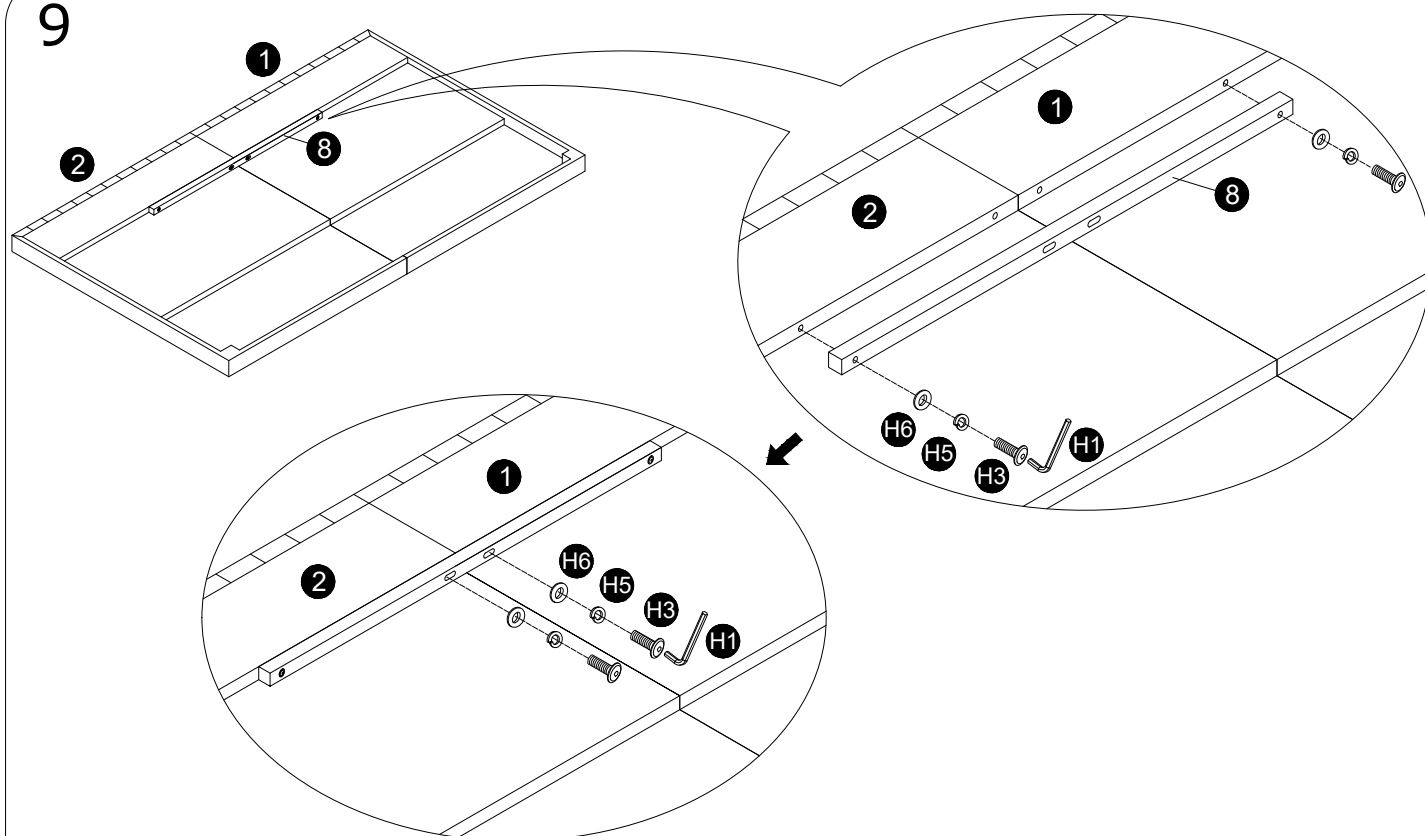
**Important: Please pay attention to the installation direction of part 9.**  
**The arrow on top of part 9 should point towards the side rail.**  
**Do not install it in the wrong direction.**



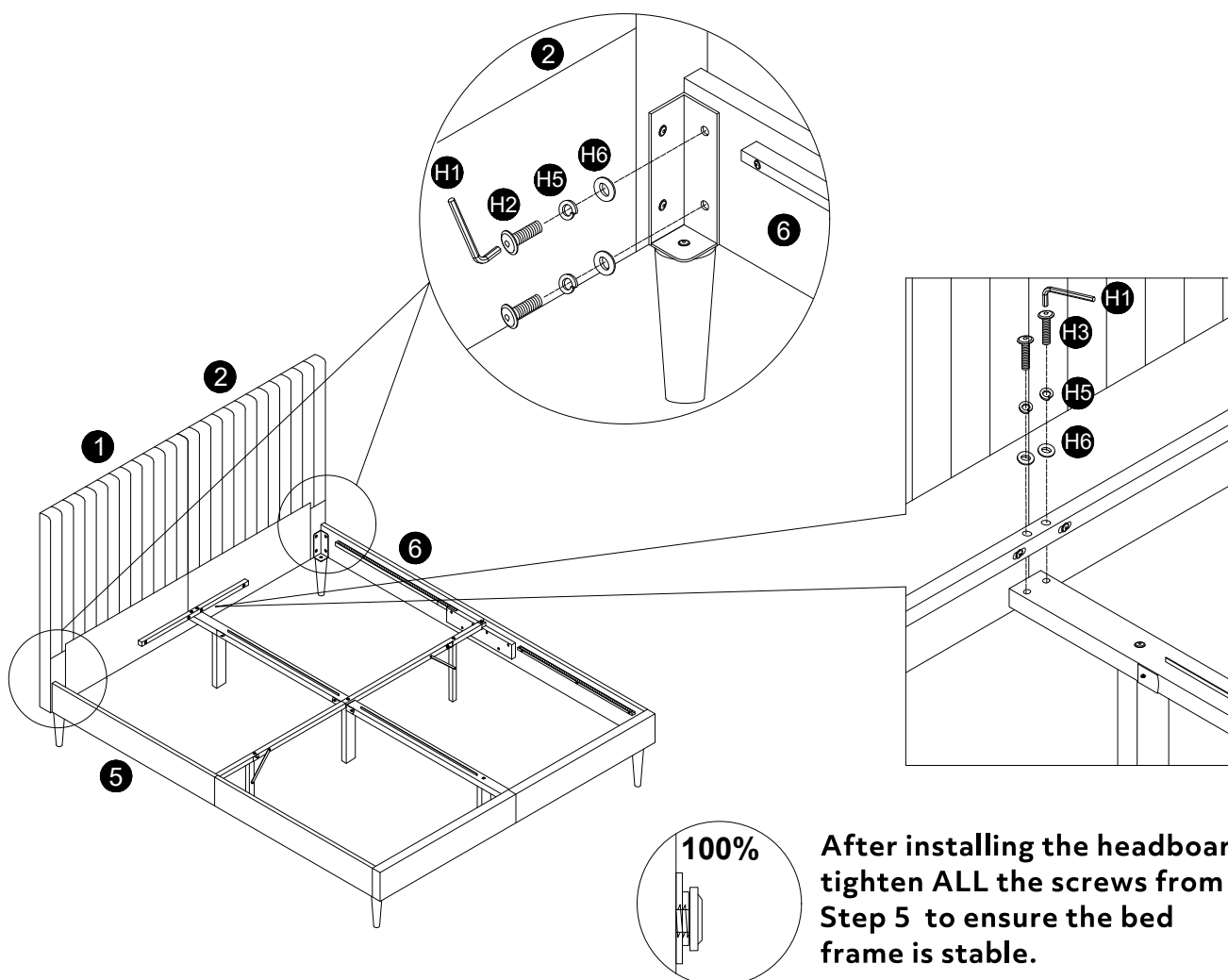
8



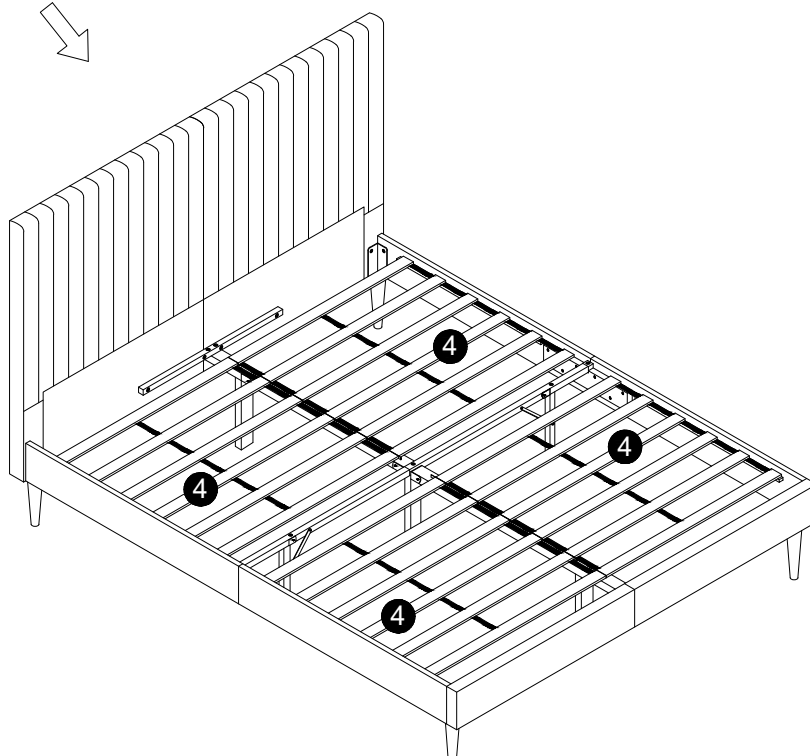
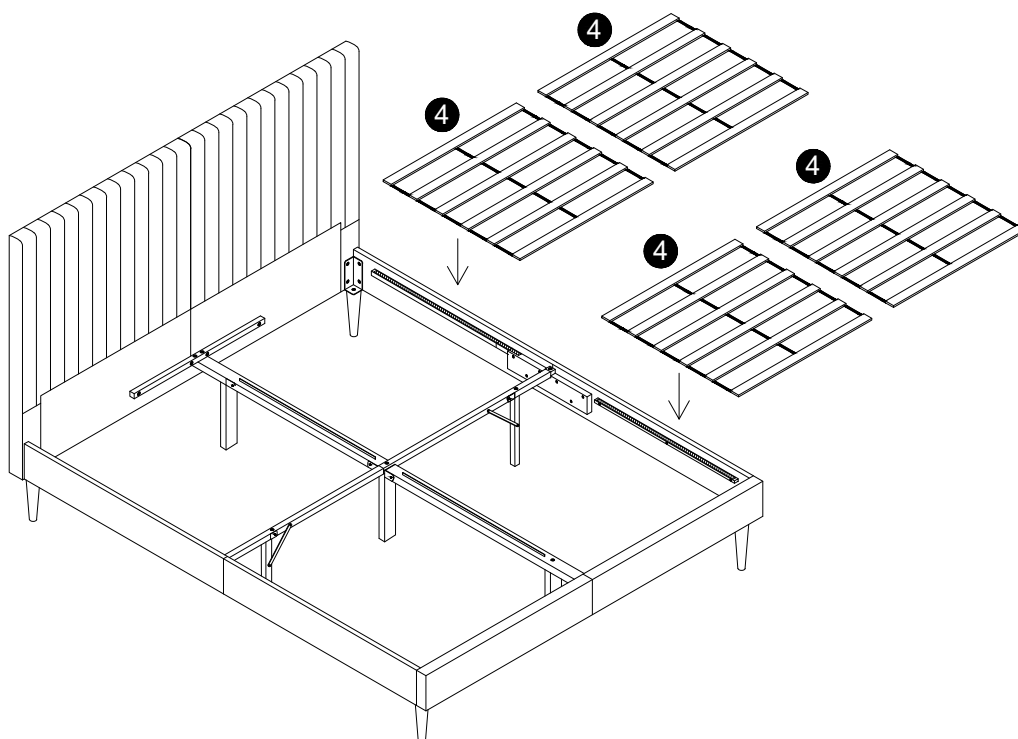
9



10



11



***Job Complete !***

*In the interest of our environment please dispose of all packaging thoughtfully.*