



Twinvee Patio Cover

Only for FRONT FASCIA wider than 16ft
fastening/sealing the front splice



STEP 01

Preparing the FRONT FASCIA & SPLICE

Lay the front fascias parallel and evenly on a flat non-abrasive surface.

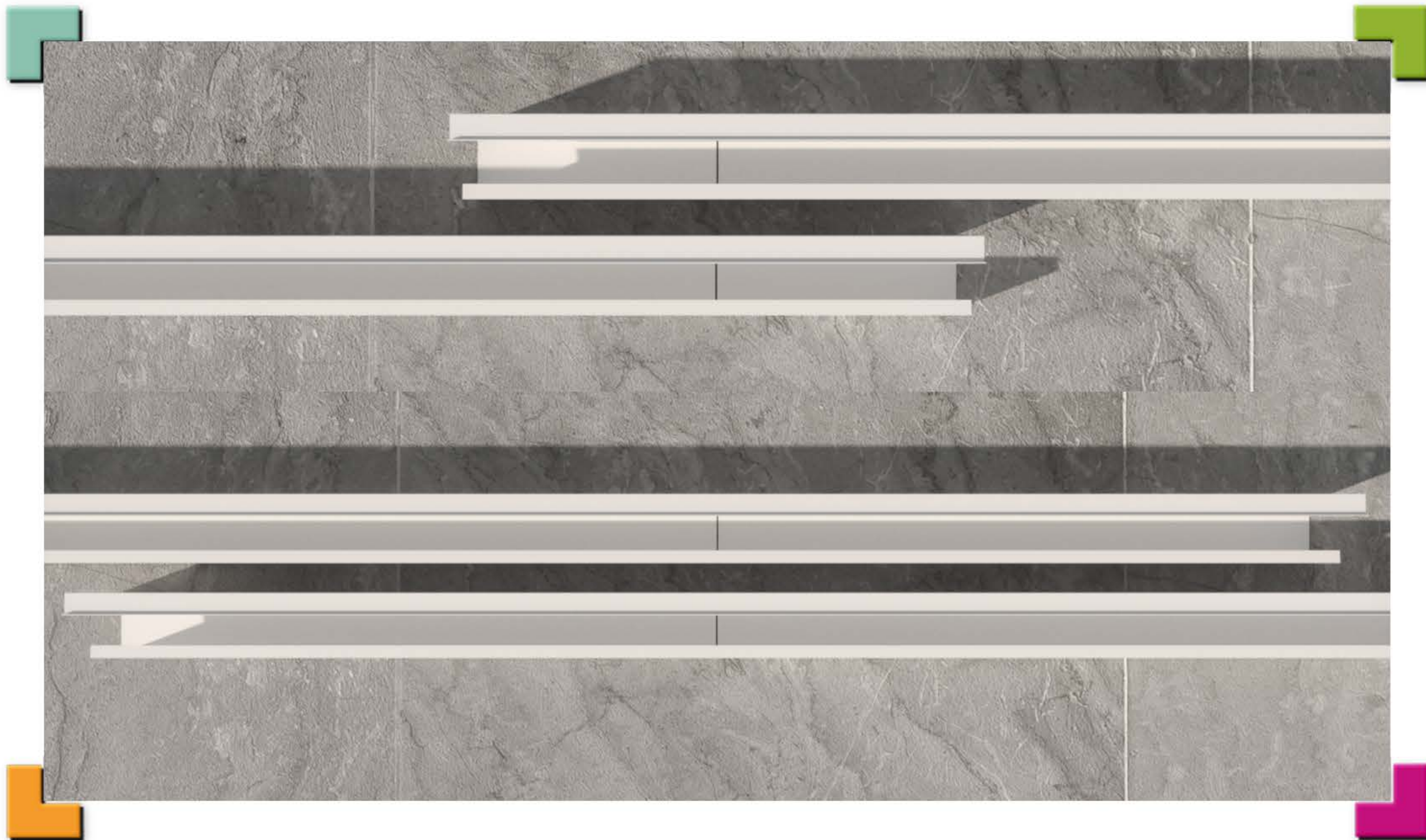
Measure your FRONT FASCIA SPLICE. If you live in the Midwest or West U.S. your splice will be 12" silver color. If you live in the Central or East your SPLICE will be 30" white.



STEP 02 - A

Preparing the FRONT FASCIA & SPLICE

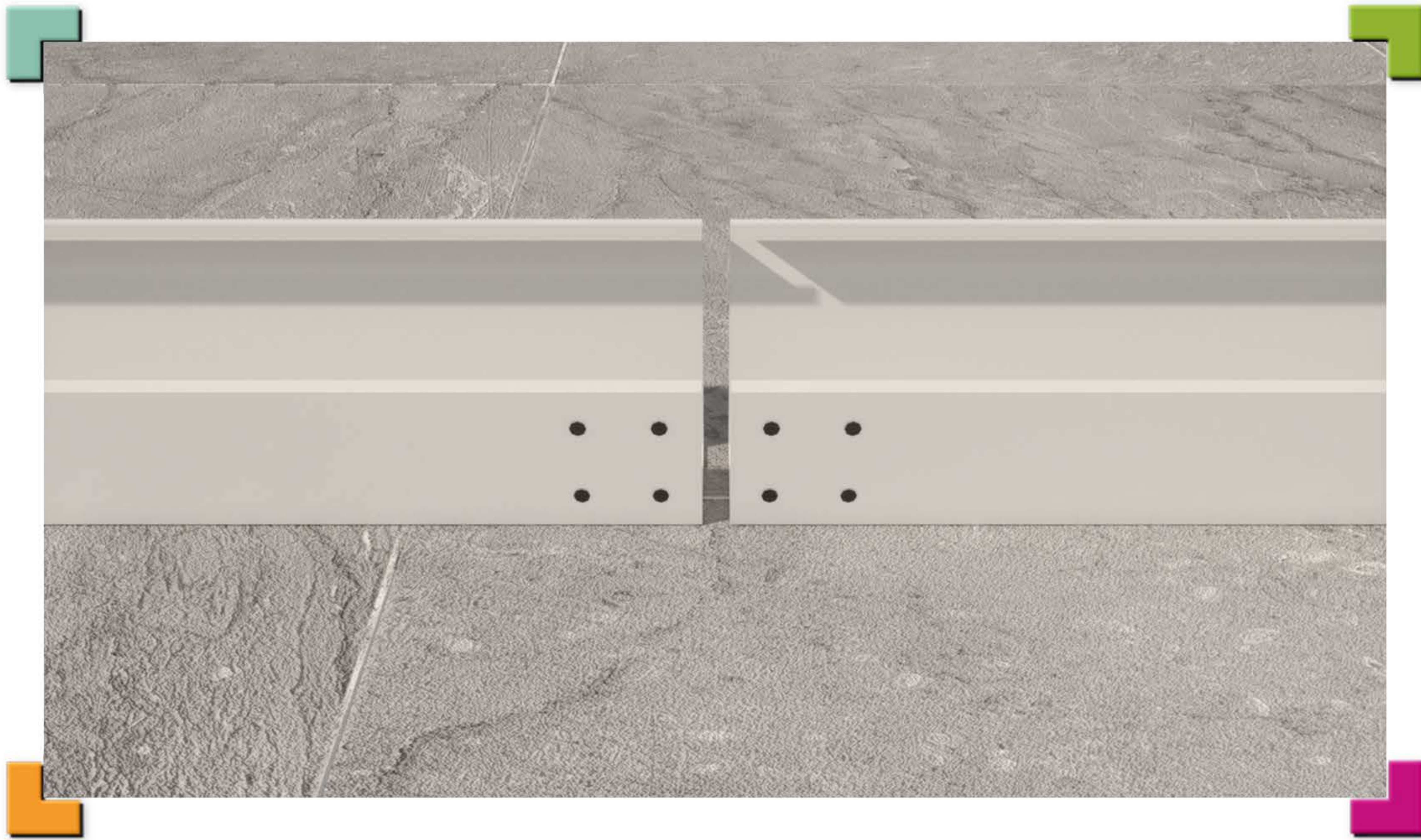
Hook your measuring tape inside the SPLICE measuring & mark at 6" inside the 12". Measure over and mark at 15" inside the 30" splice.



STEP 02 - B

Preparing the FRONT FASCIA & SPLICE

Hook your measuring tape inside the FRONT FASCIA. Measure and mark inside both FRONT FASCIAS 15" if you have the 30" SPLICE. Measure and mark inside both FRONT FASCIAS 6" if you have the 12" SPLICE.



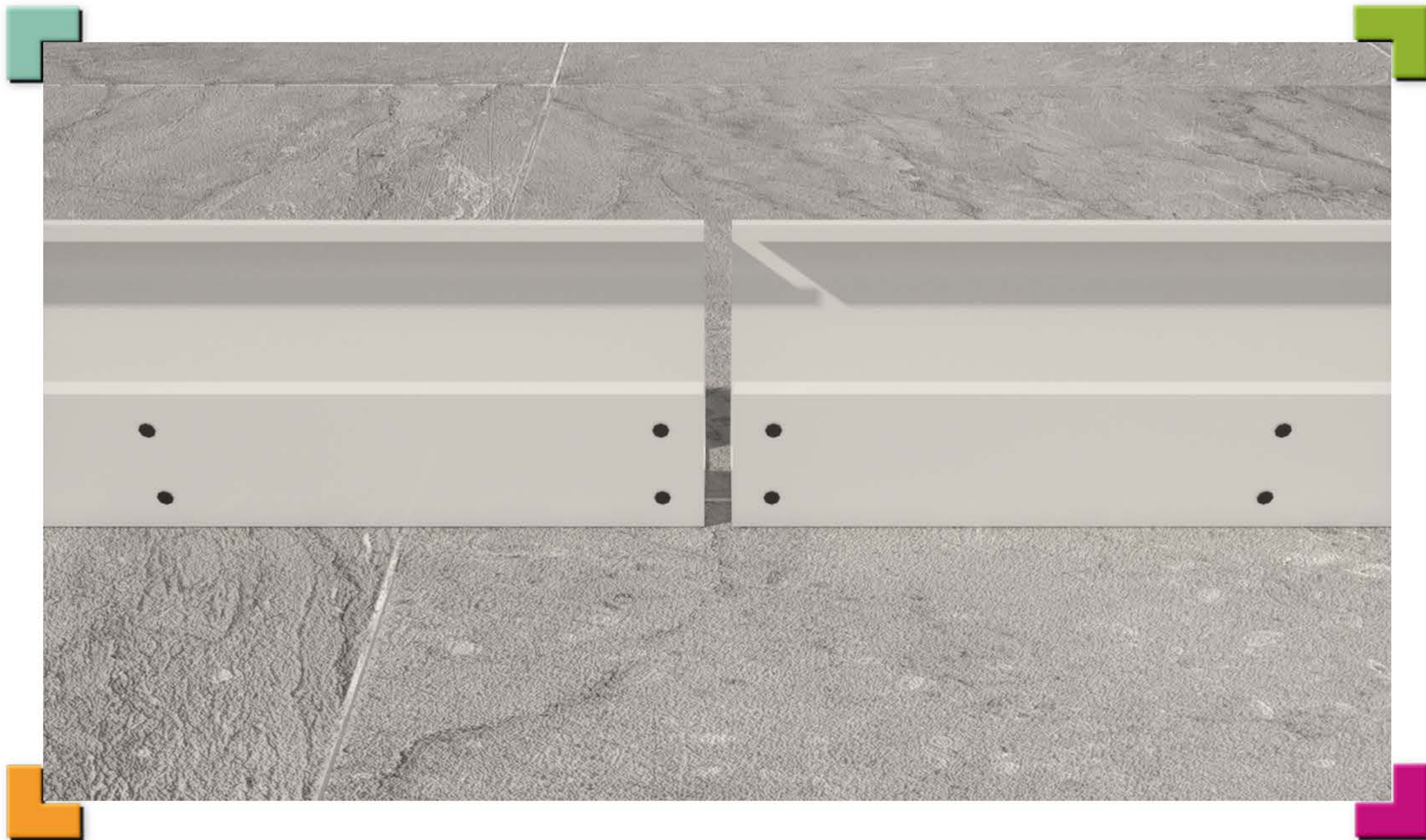
STEP 03 - A

Preparing the FRONT FASCIA for 12" SPLICE

Hook measuring tape on back side of FRONT FASCIA.

Measure over 2" & 4" in both directions of both pieces and mark with a pencil.

Measure up 3/4" from bottom and down 3/4" from top. Mark locations with a pencil.



STEP 03 - B

Preparing the FRONT FASCIA for 30" SPLICE

Hook measuring tape on back side of FRONT FASCIA.

Measure over 2" & 13" in both directions and mark with a pencil.

Measure up 3/4" from bottom and down 3/4" from top. Mark locations with a pencil.



STEP 04 - A

Preparing the FRONT FASCIA for 12" SPLICE

Hook measuring tape on end of FRONT FASCIA.

Measure over 2" & 4" in both directions of both pieces and mark with a pencil.

Measure up 1-1/4" from bottom and down 1-1/4" from top. Mark locations with a pencil.



STEP 04 - B

Preparing the FRONT FASCIA for 30" SPLICE

Hook measuring tape on end of FRONT FASCIA.

Measure over 2" & 13" in both directions and mark with a pencil.

Measure up 1-1/4" from bottom and down 1-1/4" from top. Mark locations with a pencil.



STEP 05

Caulking the inside Fascias

Caulk inside both fascias stay 1 inch away from end of both fascias.

Down both corners, up & down the front and back and squiggly lines on the bottom.

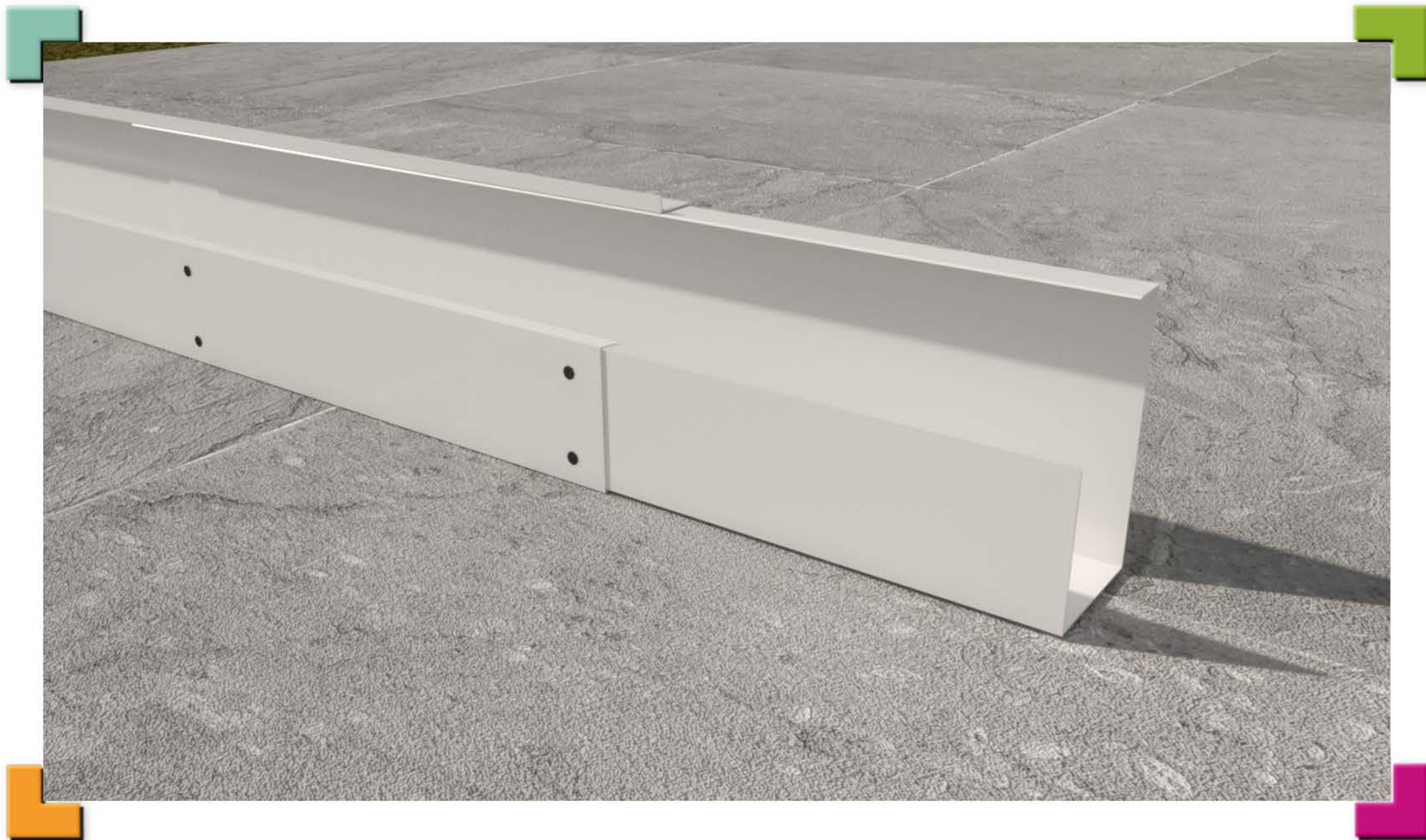


STEP 06 - A

Inserting the FRONT FASCIA SPLICE for 12" SPLICE

Insert the FASCIA SPLICE in half way 6" as shown.

Push the SPLICE down into the caulking and fasten using the #8 tek screws thru FRONT FASCIA into the SPLICE where marked on both sides.



STEP 06 - B

Inserting the FRONT FASCIA SPLICE for 30" SPLICE

Insert the FASCIA SPLICE in half way 15" as shown.

Push the SPLICE down into the caulking and fasten using the #8 tek screws thru FRONT FASCIA into the SPLICE where marked on both sides.



STEP 07

Fastening the FRONT FASCIA SPLICE

Make sure both pieces of FRONT FASCIA are straight.

Then slide in the second FASCIA and fasten with screws on the marks ON THE BACK AND FRONT of FASCIA.



STEP 08

Caulking the FRONT FASCIA SPLICE

Caulk inside the FRONT FASCIA at the ends of the SPLICE & going up, the front and back sides.

Caulk all the screws protruding inside the fascia and the SPLICE.