

ASSEMBLY INSTRUCTION

MODEL NAME	DAKOTA SECTIONAL SOFA
MODEL NO.	461003L
COMPLETE ASSEMBLY	
MODEL NAME	DAKOTA SECTIONAL SOFA
MODEL NO.	461003R
COMPLETE ASSEMBLY	

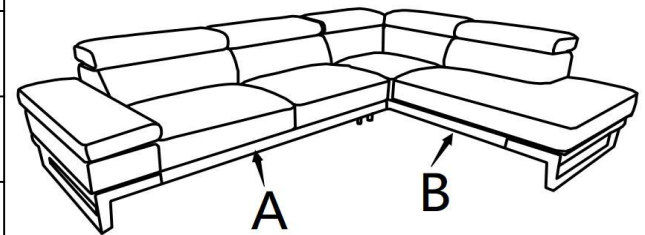
Thank you for purchasing this quality product. Be sure to lay all components on a soft and clean surface before assembly in order to avoid component from being scratched.

CAUTIONS:

1. Check contents against list for quantity
2. Familiarize yourself with the components and hardware by reviewing the assembly instructions.
3. Do not over tighten the screws and bolts as it may damage the threads.
4. Keep all the hardware parts out of the reach of children

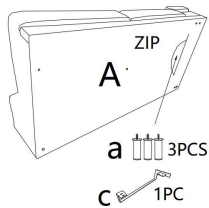
PART LIST:

Part no.	Part name	Part image	Quantity(pcs)
a	Stainless steel round leg		7
b	Stainless steel rectangular leg		1
c	Stainless steel rectangular leg		1
d	Screw		8
e	Washer		8
f	Allen key		1
g	Top pillow		5

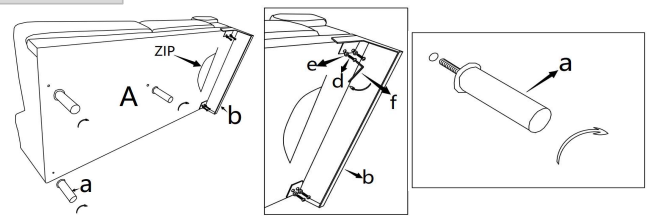


ASSEMBLY DETAILS:

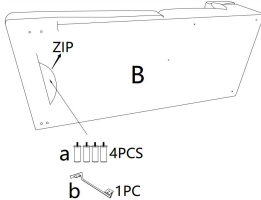
STEP 1: Open the zip at the bottom of sofa A and take legs



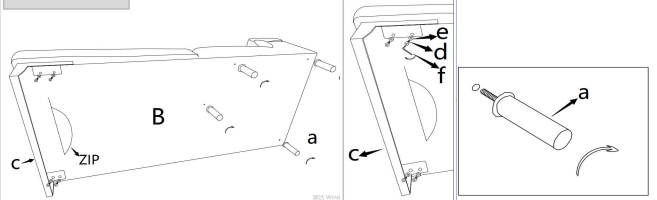
STEP 2: Fix four legs at the bottom of sofa A



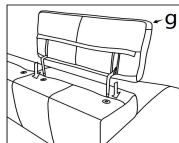
STEP 3: Open the zip at the bottom of sofa B and take legs



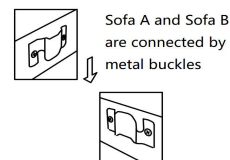
STEP 4: Fix five legs at the bottom of sofa B



STEP 5: Please see the below notes, and then fix the top pillow into the hole of each backrest



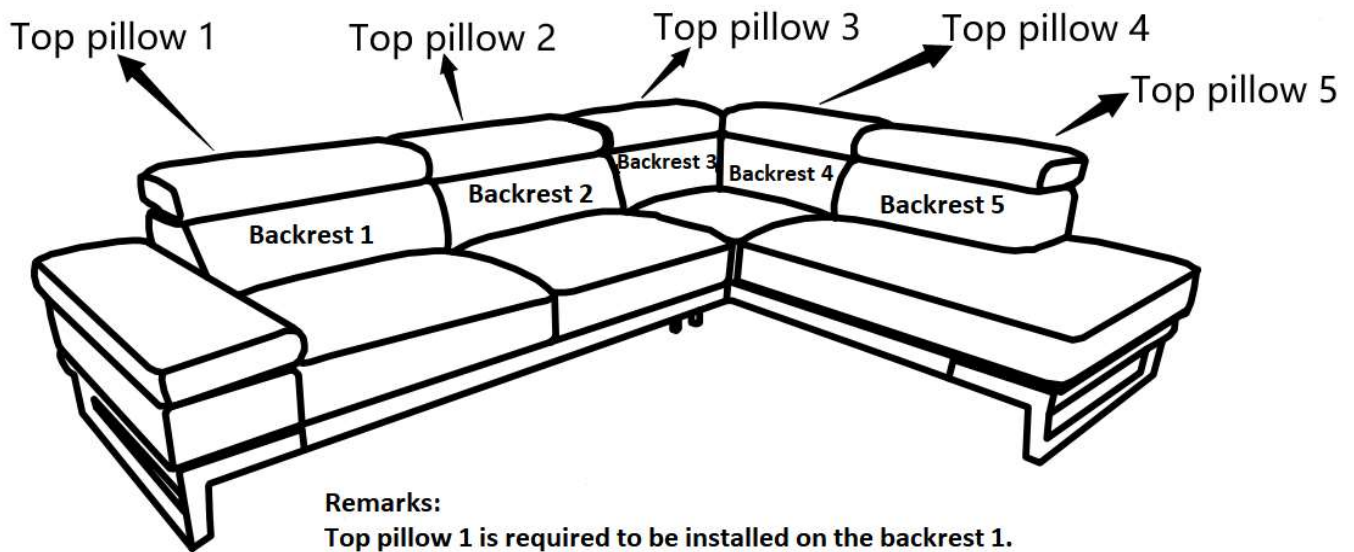
STEP 6: Sofa A and Sofa B are connected by metal buckles



Notes:

See the below remarks before starting to install top pillows.

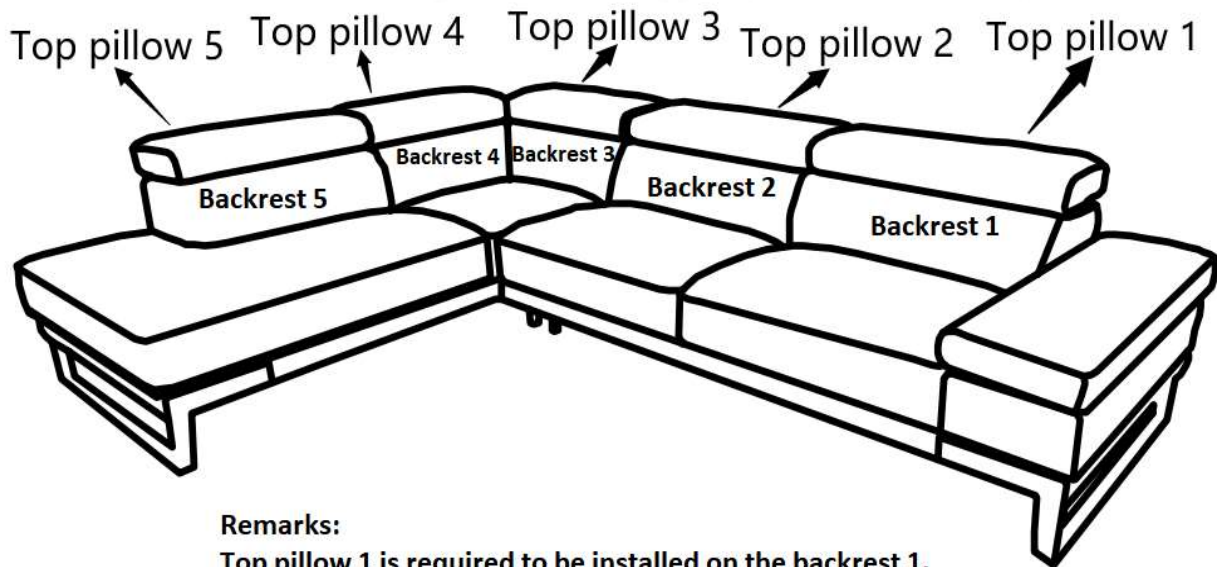
Item no.:461003L



Remarks:

- Top pillow 1 is required to be installed on the backrest 1.
 - Top pillow 2 is required to be installed on the backrest 2.
 - Top pillow 3 is required to be installed on the backrest 3.
 - Top pillow 4 is required to be installed on the backrest 4.
 - Top pillow 5 is required to be installed on the backrest 5.
- Don't mix to install these pillows.

Item no.:461003R



Remarks:

- Top pillow 1 is required to be installed on the backrest 1.
 - Top pillow 2 is required to be installed on the backrest 2.
 - Top pillow 3 is required to be installed on the backrest 3.
 - Top pillow 4 is required to be installed on the backrest 4.
 - Top pillow 5 is required to be installed on the backrest 5.
- Don't mix to install these pillows.

