

AA

BB

CC

DD

EE

FF

GG

HH



Wire nut
QTY: 6



Mounting screw
QTY: 4



Mounting bracket
QTY: 2



Ceiling plate
QTY: 2



Suspending chain
QTY: 2



Top Loop
QTY: 2



Finial
QTY: 2



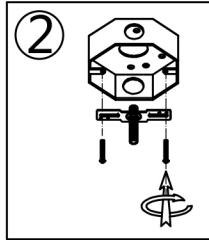
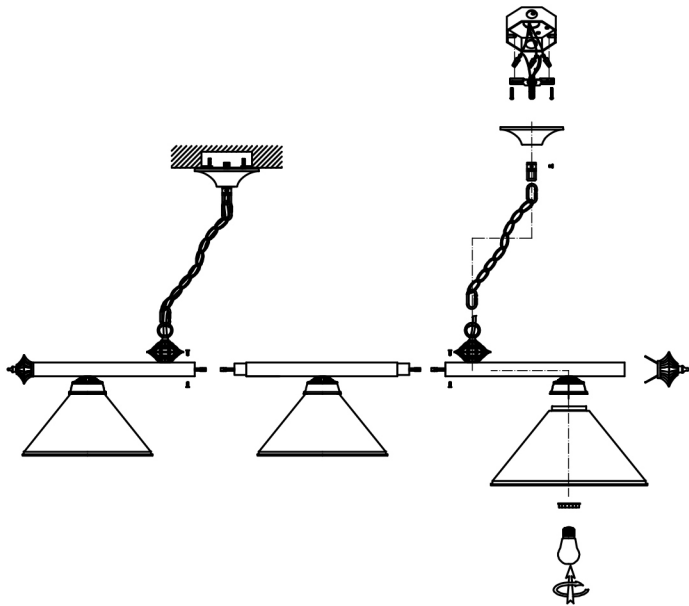
Countersunk
head screw
QTY: 4

PREPARATION

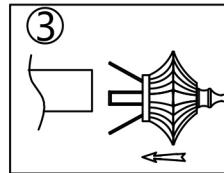
Before assembling the product, make sure all parts are present. Compare the existing parts with package contents list and hardware contents list. If any part is missing or damaged, do not attempt to assemble the product.

Tools Required for Assembly(not included): Flathead screwdriver, Phillips screwdriver, Pliers, Electrical tape, Wire cutters ,Safety glasses.

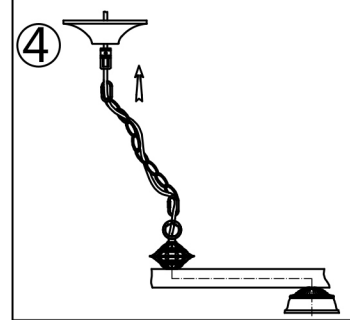
Helpful Tools(not included): Wire strippers, Step ladder



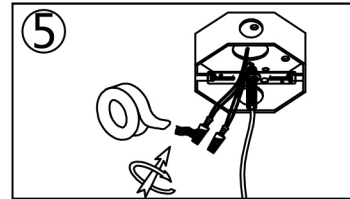
2 Lock the mounting bracket(CC) on the electrical box with mounting screws(BB).



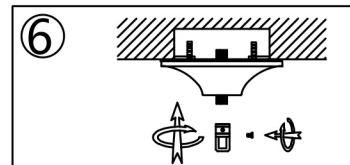
3 Insert the finials(GG) into both ends of the fixture base.



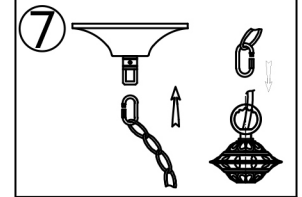
4 Adjust the length of the chain(EE) as you need if necessary. Thread the wires through different holes of the chain to get them twined. Then thread the fixture wire through the top loop(FF) and ceiling plate(DD).



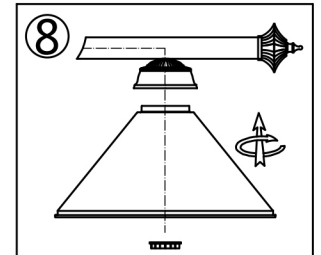
5 Hold the fixture near the junction box. Thread the wires through threaded pipe. Then make wire connections with wire nuts(AA) according to the L/N/E instruction and wrap each connection with electrical tape.



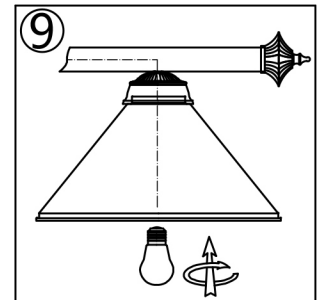
6 Hold the fixture near the junction box and twist the top loop to lock the ceiling plate on the threaded pipe. Then secure it tightly with the lock screw (which is pre-assembled on the top loop)



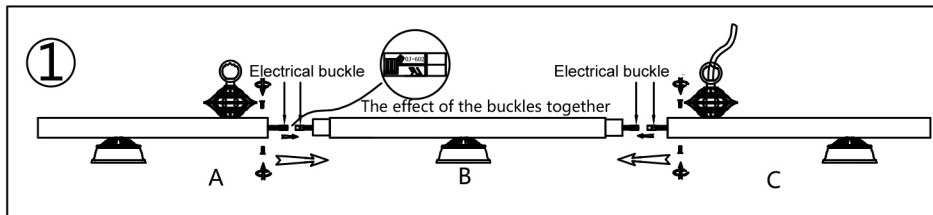
7 Connect the fixture with the suspending chain by the buckle of the chain.



8 Attach the iron shade on the holder; secure them with shade ring(which is pre-assembled on the holder).



9 Install the E26 bulb and try to turn power on to check if the bulbs work normally.



1 First, you need to link the electrical buckles, then install the lamp body A B C with Pan head screws (HH) , remember to lock all the screws.