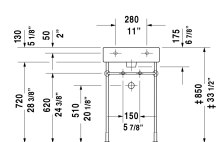
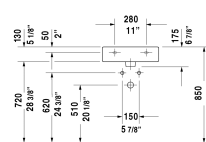


\* The required reach to operable parts  
Recommended ADA Installation



Furniture washbasin	Dimension	Weight	Order number
with faucet deck, underside fully glazed, hardware included, wall-mounted, cUPC® listed*, 19 5/8" Inch			
<b>Colors</b>			
00 White			
<b>Variant</b>			
● with overflow	19 5/8" x 18 1/2" Inch	33.5 lb	0454500000
●●● with overflow	19 5/8" x 18 1/2" Inch	33.5 lb	0454500030
<b>Infobox</b>			
* Complies with following standards: ASME A112.19.2/CSA B45.1, Washbasin is not ADA compliant in combination with pedestal, siphon cover or metal console			
Sanitary ceramics with the special WonderGliss surface finish will remain clean and attractive-looking for a long time to come. When ordering WonderGliss please add a "1" as eleventh digit to the model number.			
<b>Accessory for ceramics</b>			
Push button drain assembly for washbasins with overflow	2" Inch	0.8 lb	005052
Towel rail square tube 1/2", Chrome, for washbasin # 045450, 235050, 235350	17 3/4" Inch	1.1 lb	003029
Design Siphon		3.3 lb	005036
<b>Suitable products</b>			
Metal console height adjustable +2", for washbasin # 045450, 235050,			003065

**Vero Furniture washbasin  # 0454500000 / 0454500030**

| &lt; 19 5/8" Inch &gt; |

Vanity unit wall-mounted 1 pull-out compartment, for Vero # 045450, 17 3/4" x 17 3/8" Inch	17 3/4" x 17 3/8" Inch	KT6685
Vanity unit wall-mounted 2 drawers, upper drawer including cut-out for siphon and siphon cover, for Vero # 045450, 17 3/4" x 17 3/8" Inch	17 3/4" x 17 3/8" Inch	KT6635
Vanity unit wall-mounted 1 pull-out compartment, for Vero # 045450, without compartment inserts, 17 3/4" x 17 1/2" Inch	17 3/4" x 17 1/2" Inch	XL6043
Vanity unit wall-mounted 2 drawers, upper drawer including cut-out for siphon and siphon cover, for Vero # 045450, 17 3/4" x 17 1/2" Inch	17 3/4" x 17 1/2" Inch	XL6343

*All drawings contain the necessary measurements which are subject to standard tolerances. They are stated in inch & mm and are non-binding. Exact measurements, in particular for customized installation scenarios, can only be taken from the finished ceramic piece.*