


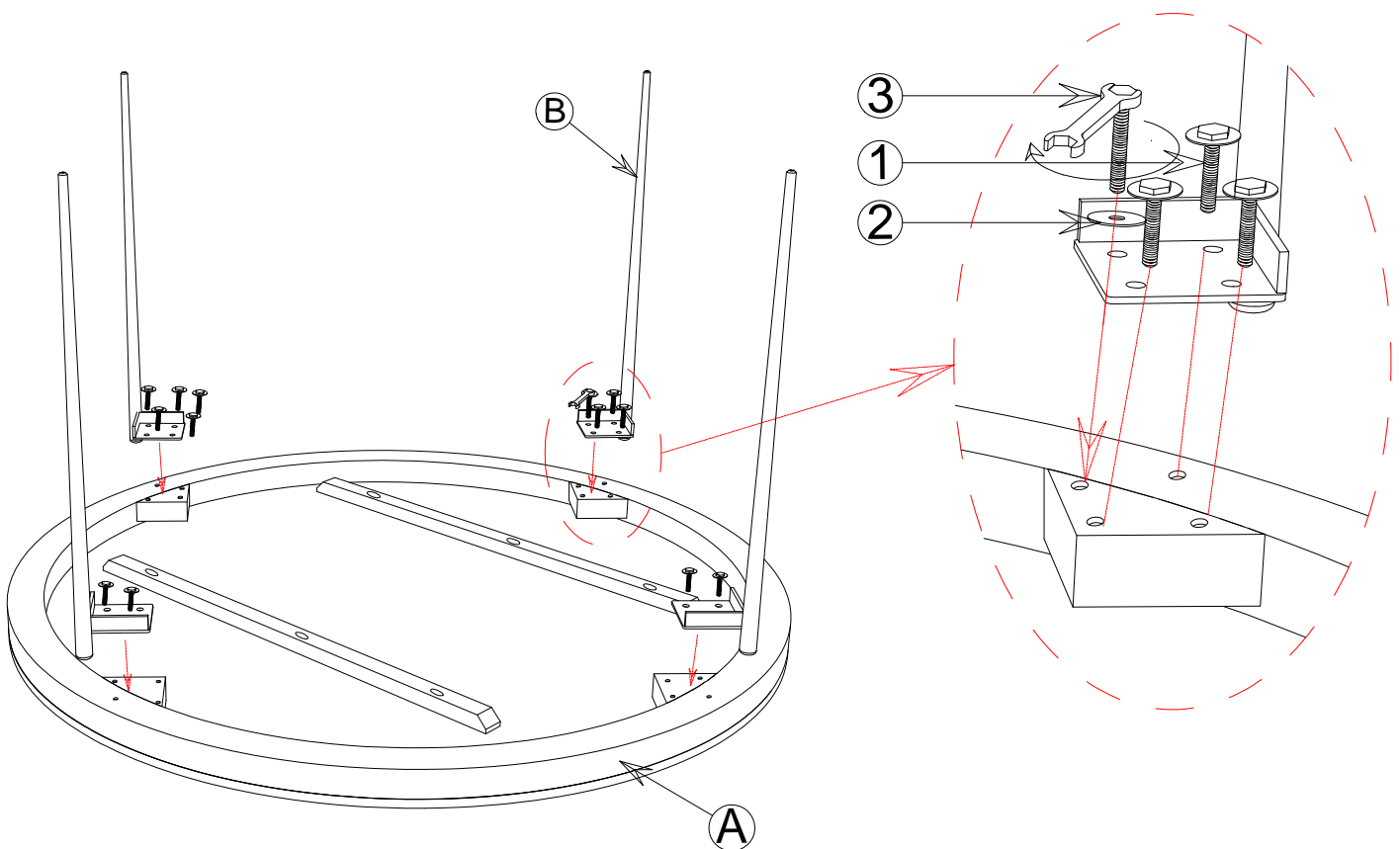


ASSEMBLY INSTRUCTION

ROUND DINING TABLE

HARDWARE LIST

| NO. | ITEM | DESCRIPTIN | QTY. |
|-----|---|----------------------|------|
| 1 |  | Bolt M6X25 MM | 16 |
| 2 |  | Flat washer M6X18 MM | 16 |
| 3 |  | Wrench | 1 |



TO ASSEMBLY :

- STEP 1 : Unpack round dining table and turn the top (A) upside down .
- STEP 2 : Align holes in legs (B) with holes on bottom of top (A) and slide it into position.
- STEP 3 : Thread the flat washer(2) , bolt (1) to leg (B) . Do not tighten bolts fully.
- STEP 4 : Tighten bolts in step 3 fully with wrench (3) then carefully turn the round dining table upright.