



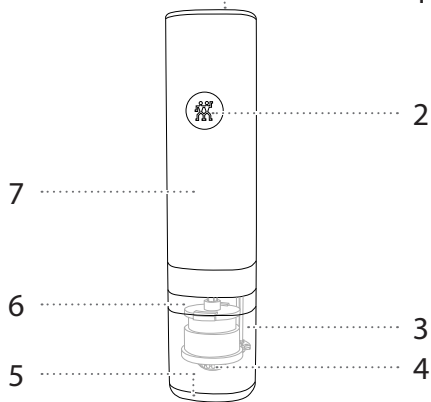
ZWILLING

Bedienungsanleitung 2 | Operating instructions 18 | Manuel d'utilisation 36 | Manual de instrucciones 54 |
Istruzioni per l'uso 70 | Bedieningshandleiding 86 | Manual de instruções 102 | Betjeningsvejledning 118 |
Bruksanvisning 134 | Kullanım kılavuzu 150 | Инструкция по применению 166 | 取扱説明書 182

ZWILLING ENFINIGY®

53103-7 | 1009638 | 1009639

Overview



1 Battery symbol

2 On/off switch

3 Spice holder

4 Wheel for adjusting milling fineness

5 Aroma protection lid

6 View window

7 Body

Operation

1 Charging the spice mill

Before using the spice mill for the first time, completely charge it with the supplied charging cable.

Battery symbol fast flash:

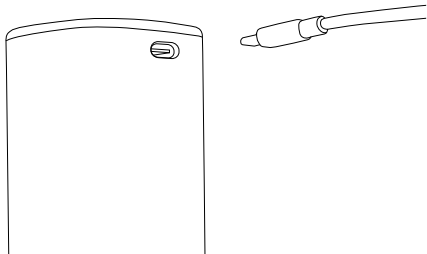
Battery state of charge is low

Battery symbol slow flash:

Battery is charging

Battery symbol lit:

Charging completed



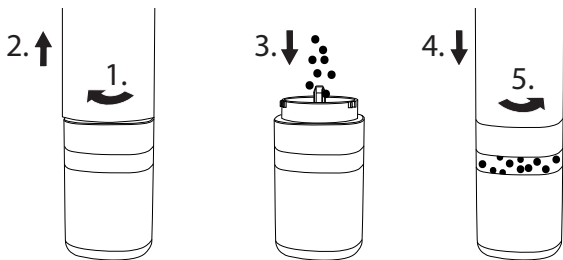
Initial charging takes approx. 4 hours.

2 Filling the spice mill

To fill the spice mill, hold the spice container and turn the housing clockwise. Pull off the housing and fill the container with spice. Place the housing back on the spice container and lock it by turning it counterclockwise.



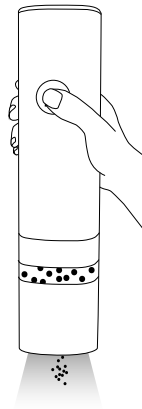
The spice mill is suitable for peppercorns, coarse-grained salt, dried herbs and spices.



3 Operating the spice mill

Before using the mill, remove the aroma saver cover on the underside of the container. Press and hold the on/off switch to operate the spice grinder. This process also activates the lighting on the underside.

i Whole spices retain their aroma and flavour. You need to crush and grind the spices to release the essential oils.

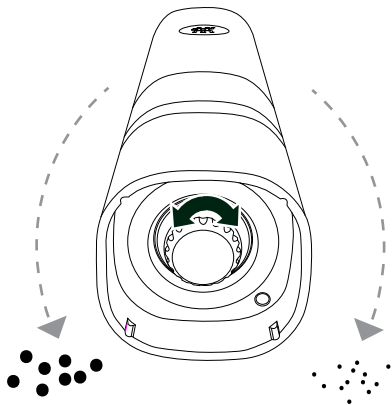


4 Setting the milling fineness

Turn the dial clockwise for finer results.
Turn the dial anticlockwise for coarser results.



If the milling mechanism stops rotating with a very fine setting, a coarser setting must be selected.



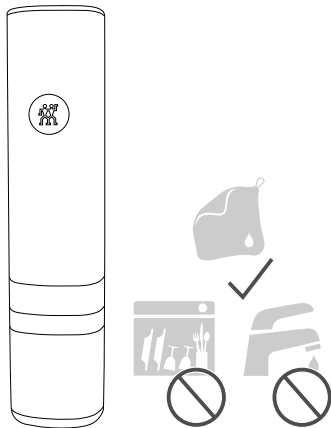
Maintenance

Cleaning the housing

You can use a damp, lint-free cloth for external cleaning of the housing. Do not use microfibre cloths as they can cause fine scratches on the surface of the housing.



Never immerse the device in water or other liquids.



Malfunctions

Problem/error code**Possible cause****Remedy**

The milling mechanism is not working.

The grind is set too fine.

Adjust for a coarser grind.

The milling mechanism is obstructed.

Clean the milling mechanism.

The lighting is not working.

The lamp is defective.

Contact your retailer or Customer Service.

The device is not working.

The device is not charged.

Use the supplied charging cable to charge the device.

Technical data

EN

Service life 3 years

Shelf life 3 years



EAC test symbol

Markings



Device class III - Extra-low voltage



The appliance complies with the directives for CE, UKCA and ETL markings.

Customer service

Please contact our customer service should you encounter any problems with your device.

Detailed information on service, repairs, warranty and product registration can be found on www.zwilling.com/service.

ZWILLING J.A. HENCKELS (UK) LTD

16 Handley Page Way, Old Parkbury Lane,
Colney Street, St Albans, AL2 2DQ
UNITED KINGDOM

Disposal



The "crossed-out refuse bin" symbol demands separate disposal of electrical and electronic old devices (WEEE). Such equipment may contain dangerous and hazardous substances. Do not dispose of this device and its packaging as unsorted domestic waste; instead, return it to a designated collection point for the recycling of end-of-life electrical and electronic equipment. In this way, you can contribute to the protection of resources and the environment. Contact your local authorities for more information.