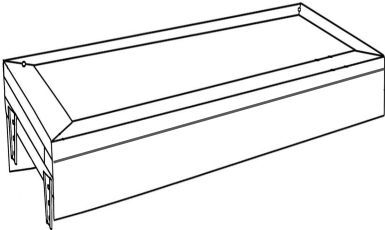
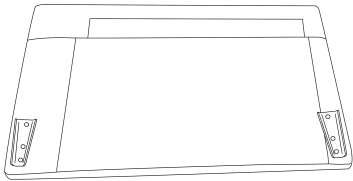

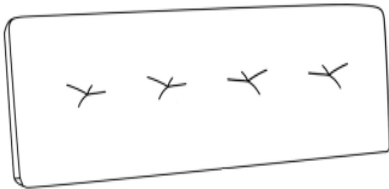
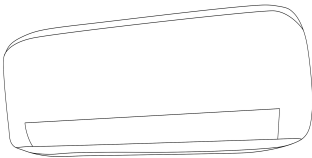



ASSEMBLY INSTRUCTIONS

PARTS LIST

LABEL	PICTURE	DESCRIPTION	QTY
A		seater with adjustable backrest	1
B		arm	2
C		Seat Cushion	1
D		Back Cushion	1
D		Arm Cushion	2
E		Leg	8

BEFORE BEGINNING ASSEMBLY:



Read instructions cover to cover



Have two adults on hand for assembly



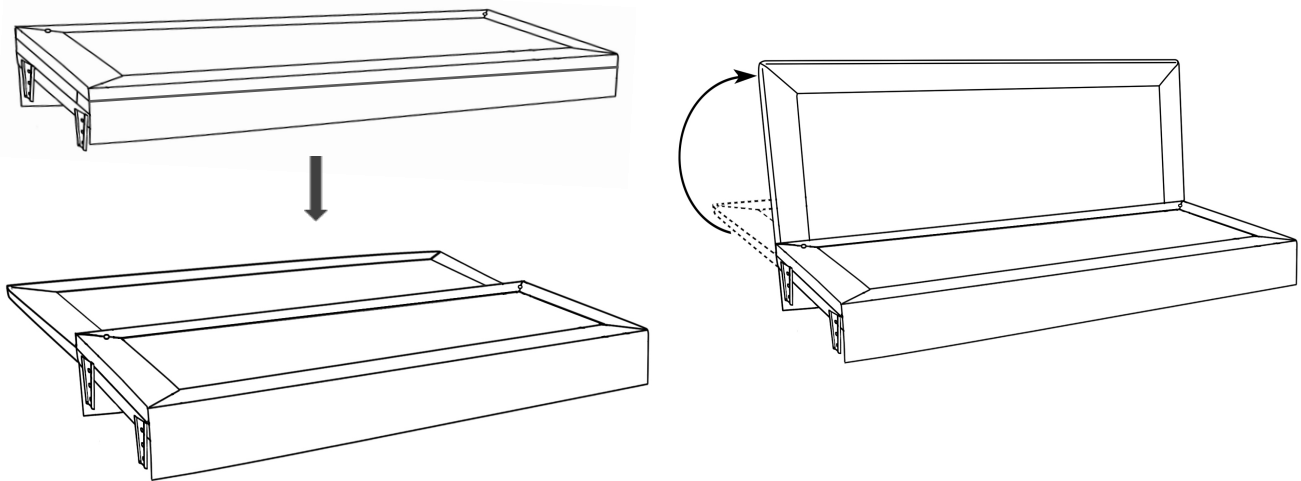
Do NOT assemble on flooring or carpet. Assemble on a clean non-marring surface (ex: packing foam)



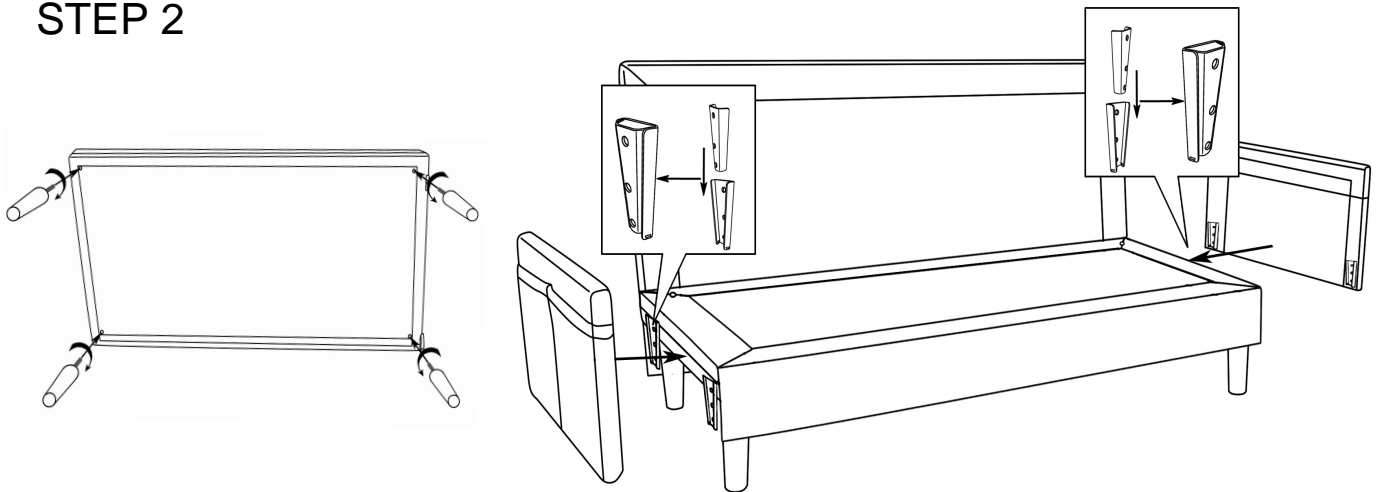
Save all packaging until assembly is complete

ASSEMBLY STEPS

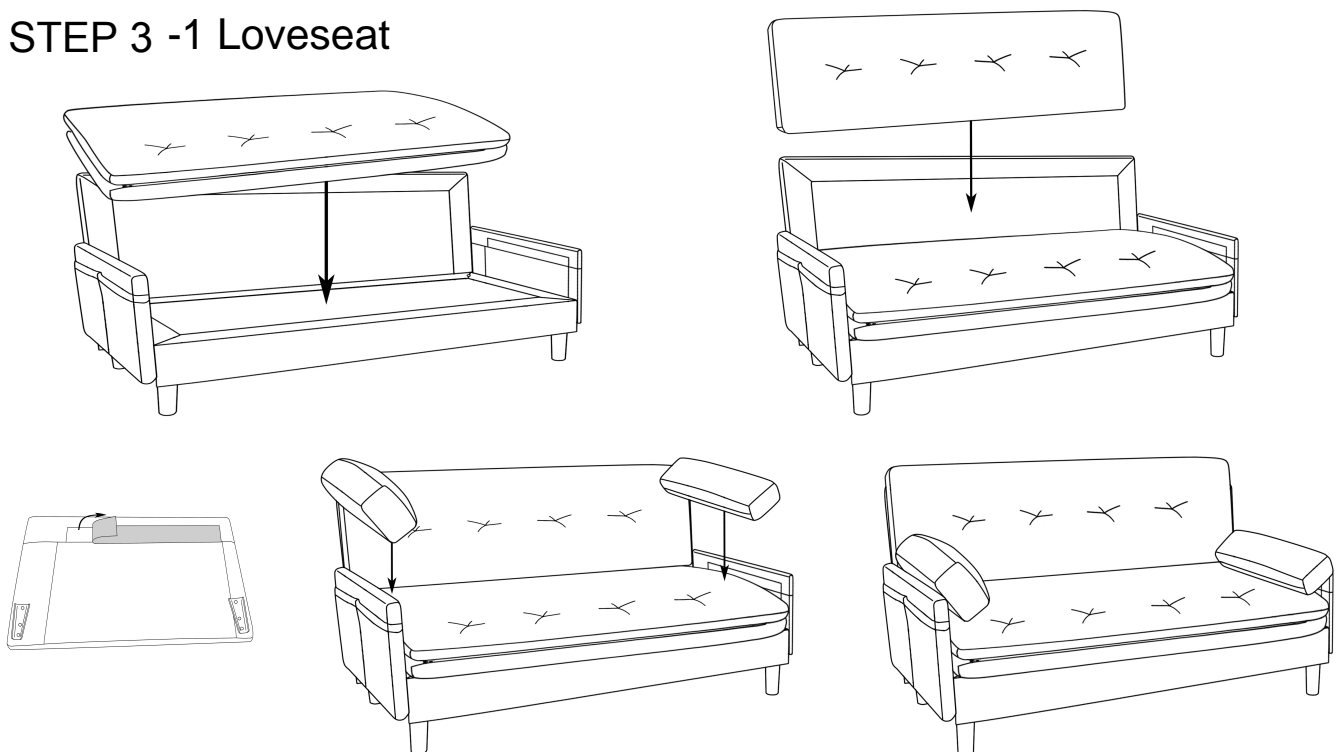
STEP 1



STEP 2

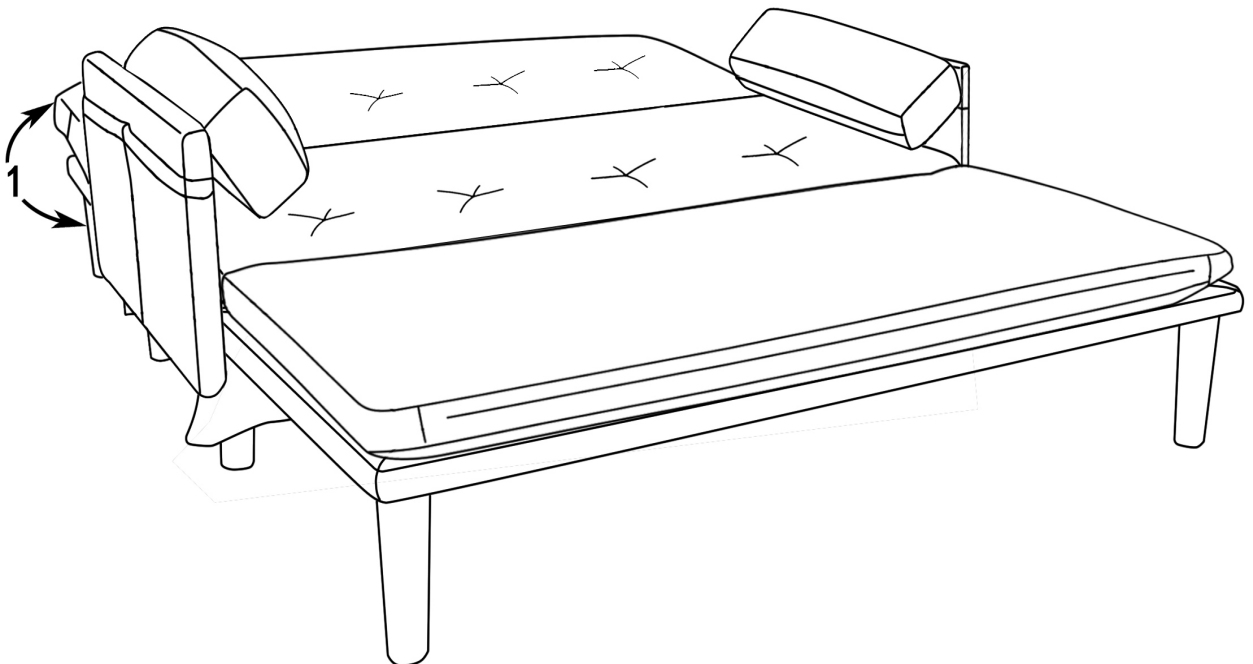
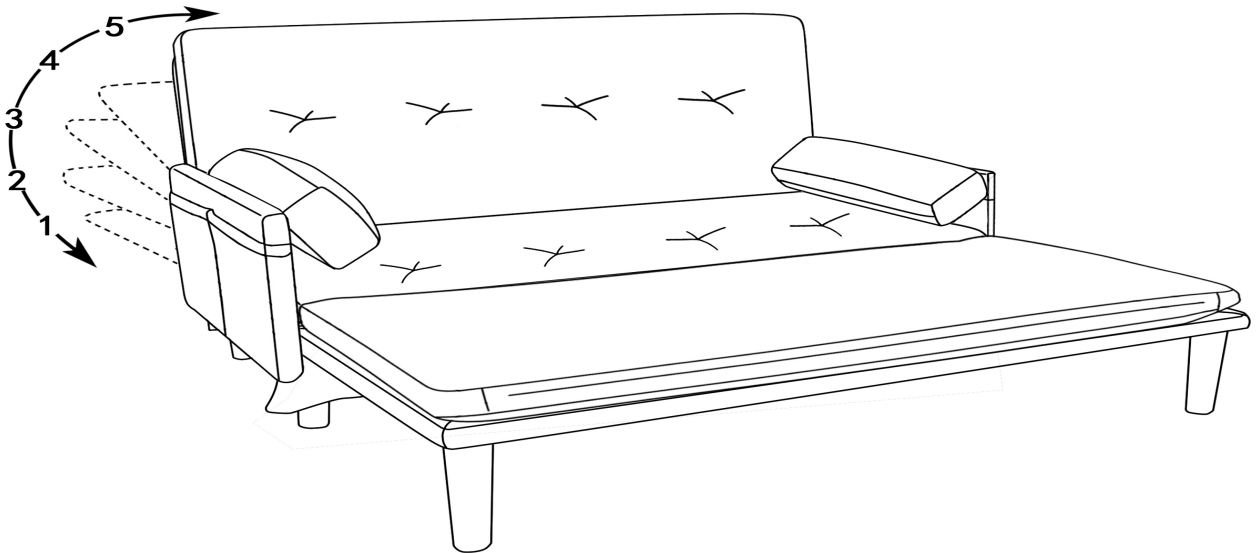
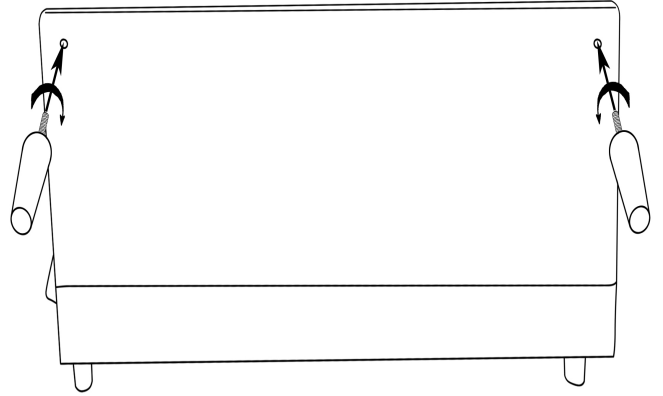
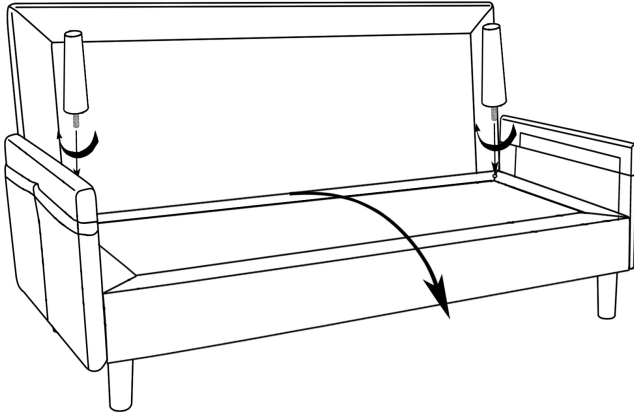


STEP 3 -1 Loveseat



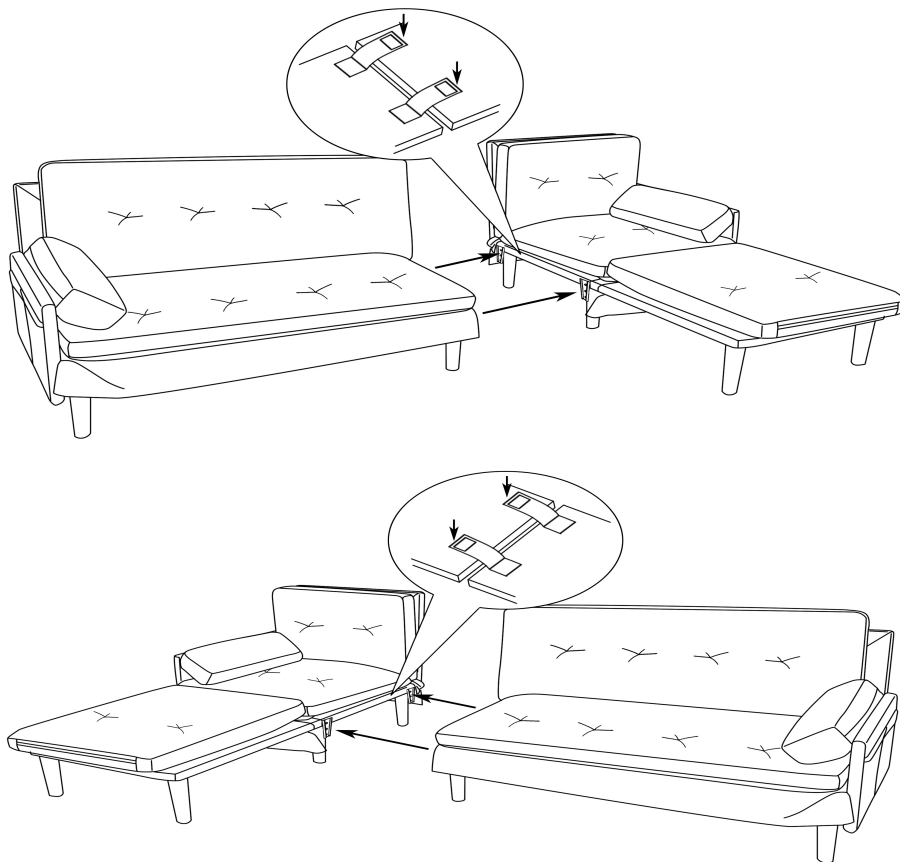
ASSEMBLY STEPS

STEP 3 - 2 Bed



ASSEMBLY STEPS

STEP 3 - 3 L-shape sofa



STEP 3 - 4 Bed Set

