



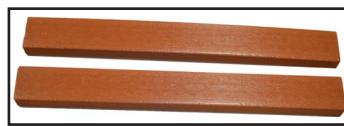
Assembly Instructions Plaza Collection Table/Bench

TOOLS REQUIRED: POWERED DRIVER & 1/2" SOCKET
PHILLIPS HEAD BIT
1/2" WRENCH

MATERIAL



(2) STEEL TABLE ENDS



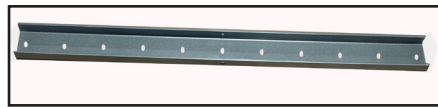
(9) 2" x 4" x 41" PLASTIC SLATS



(2) 2" x 6" x 41" ROUND NOSE PLASTIC SLATS



(2) STEEL SUPPORT CHANNEL STRAPS



(1) STEEL SUPPORT CHANNEL



(34) 5/16" SS HEX LAG SCREWS



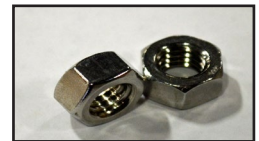
(34) 5/16" SS FLAT WASHERS



(4) 5/16-18 x 1" SS PHILLIPS HEAD BOLTS

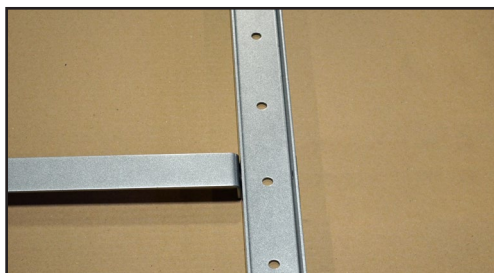


(4) 5/16" SS LOCK WASHERS

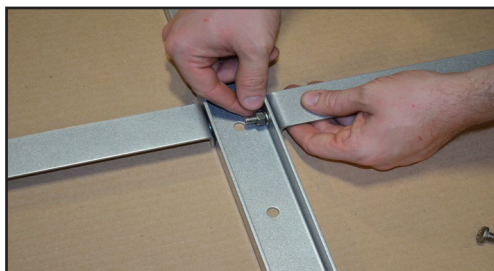


(4) 5/16-18 SS HEX NUTS

INSTRUCTIONS



Picture A



Picture B

PLEASE NOTE BEFORE ASSEMBLY

- Check materials list to verify all items have been shipped. Extra hardware may be included
- Assembly will require two people.
- Assemble the table on a flat and level surface.

Step 1. Lay the steel support channel face down and place one steel support strap perpendicular to and in the center of the support channel. The flat side of the straps will be facing up. See Picture 'A'. Ensure the center attachment holes line up with each piece. Loosely attach each strap to the support channel with 5/16-18 Phillips head bolts, lock washers and hex nuts as shown in Picture 'B'. Finger tighten only.



Picture C

Step 2. Lay out the table slats face down evenly spaced with approximately a 1/2" gap, use an item with a flat edge to line up all the slats. The table ends can be used to align the slats. See Picture 'C'.



Picture D

Step 3. Stand a table end perpendicular to one support strap with legs facing up and mounting feet turned in. Attach with 5/16 Phillips head bolts, lock washers and hex nuts, finger tighten only. Repeat on the other side. See Picture 'D'.



Picture E

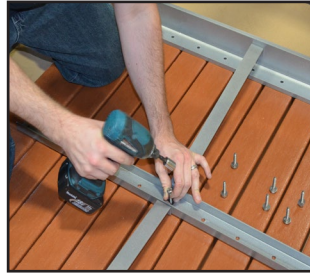
Step 4. Each person will lift one side of the assembled table ends and supports and carefully place it face down on the slats. See Picture 'E'.



Before proceeding to the next step, double check the table ends and slats are square and perpendicular to each other. Ensure all mounting holes are lined up properly on the slat boards. Make any adjustments necessary to maintain a square assembly.



Picture F



Picture G

Step 5. Ensure the table ends and support channel are sitting flat and square on the slats. See Picture 'F'. At the center of the support channel, attach using 5/16" lag screws and flat washers, working out from the center until the support channel is attached. Do not overtighten. See Picture 'G'.



Picture H



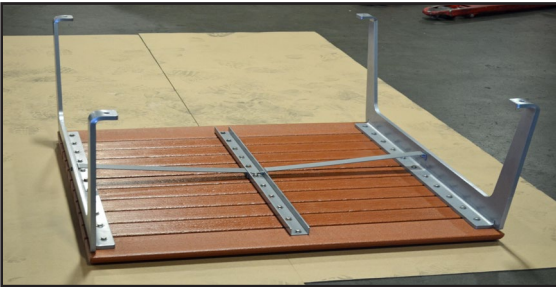
Picture I

Step 6. Remove the Phillips head bolt, lock washer and hex nut attaching support strap to table end. See Picture 'H'. Insert a 5/16" lag screw and flat washer in the center hole on each table end support. Reattach the support strap to the bench end with the Phillips head bolt, lock washer and hex nut. Repeat for the other side. See Picture 'I'.



Picture J

Step 7. Working out from the center, complete the step of attaching both table ends to the slats using 5/16" lag screws and flat washers. See Picture 'J'.



Picture K

Step 8. Ensure all hardware and slats are tight but do not over-tighten. See Picture 'K'. Carefully lift and set table on the mounting feet. The table is now ready to be attached to the ground using the appropriate hardware.