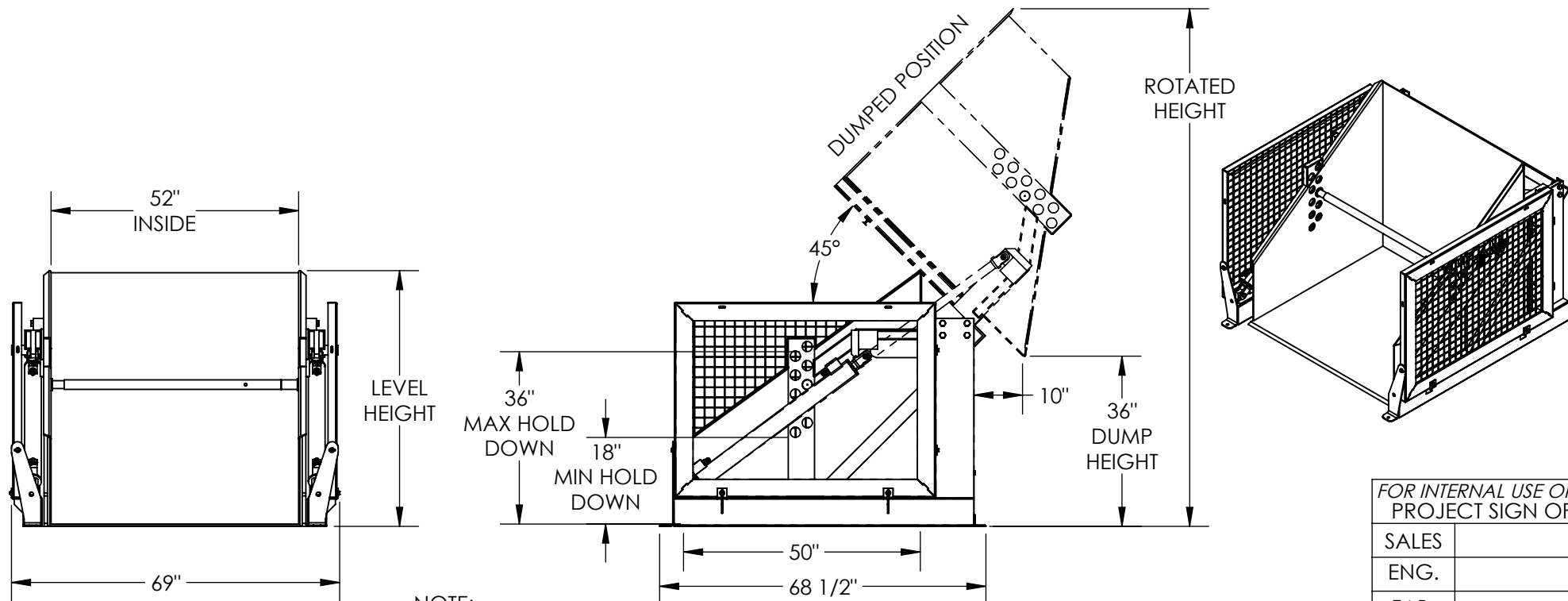


HYDRAULIC BOX DUMPER - HBD-6-36

APPROX WEIGHT: 1803.28 lbs.
DOES NOT INCLUDE WEIGHT OF POWER OR PACKAGING!!!

*** ANY ADDITIONS, DELETIONS, OR OMISSIONS MUST BE CORRECTED ON THIS DRAWING AS THIS DRAWING WILL BE CONSIDERED ALL INCLUSIVE ***

ALL GRAPHICS PROVIDED ARE FOR REFERENCE ONLY. IF CERTAIN DIMENSIONS ARE CRITICAL PLEASE VERIFY THOSE DIMENSIONS WITH YOUR SALESPERSON



NOTE:
SINGLE PHASE EXCEEDS 5 MIN. CYCLE TIME
460 VOLT 3 PHASE RECOMMENDED
CONTACT FACTORY FOR SINGLE PH. APPLICATIONS

FOR INTERNAL USE ONLY
PROJECT SIGN OFF

SALES	
ENG.	
FAB.	
POWER	

DIMENSION TOLERANCE $\pm 1/4$ "

STANDARD FEATURES

HYDRAULIC BOX DUMPER
MODEL NUMBER IS HBD-6-36
CHUTE IS 52" W X 50" L (USABLE)
DUMPER CAPACITY IS 6000 LBS.
DUMP HEIGHT IS 36"
HOLD DOWN WILL ACCEPT BOXES
18" TO 36" HIGH W/ HOLES EVERY 2"
FRAME WIDTH IS 69"
FRAME LENGTH IS 68 1/2"
LEVEL HEIGHT IS 53 1/2"
ROTATED HEIGHT IS 111"
DUMP ANGLE IS 45°
CHROME PLATED CYLINDER WITH
EMERGENCY STOP VELOCITY FUSE
WARNING: CHECK STATE AND LOCAL CODES!!
FRAME AND CHUTE DURABLE LIQUID PAINT BLUE FINISH
GUARDS AND HOLD DOWN BAR TOUGH BAKED IN POWDER COATED YELLOW FINISH

PLEASE CIRCLE SPECIFICATIONS:

POWER	AC	* DC	* AIR/OIL
MOTOR VOLTAGE	115	208	230 460
DEDICATED CIRCUIT REQUIRED			
MOTOR PHASE	SINGLE	THREE	
CONTROL	HAND	* FOOT	
~ ALL BATTERY CHARGERS ARE 115V AC ~			
* BATTERY CHRG.	REMOTE	ON-BOARD	
* CHRG. INDICATOR	YES	NO	

* AVAILABLE AT ADDITIONAL COST

SPECIAL FEATURES
NONE

APPROVAL

I, THE UNDERSIGNED, AGREE THAT THE PRODUCT AS REPRESENTED SATISFIES DESIGN AND DIMENSION REQUIREMENTS. I ALSO ACKNOWLEDGE MY DUTY TO CONFIRM PRODUCT AND INSTALLATION COMPLIANCE WITH ALL APPLICABLE FEDERAL, STATE AND LOCAL REGULATIONS AND STANDARDS.

ANY MODIFIED UNITS ARE NON-RETURNABLE

[] As drawn [] As marked

Signed: _____ Date: _____

Printed Name: _____

LEAD TIME WILL START UPON RECEIPT OF SIGNED APPROVAL DRAWING

DISTRIBUTOR'S NAME: _____ P.O.# ☒ X

VESTIL MANUFACTURING W.O.# ☒ X

DRAWN BY: CA DATE: 03/10/2016 SALES: ☒ X

REFERENCE: X SCALE: 1:32 FILE NAME:

QUOTED LEAD TIME: X QUOTE # X 34-007-010