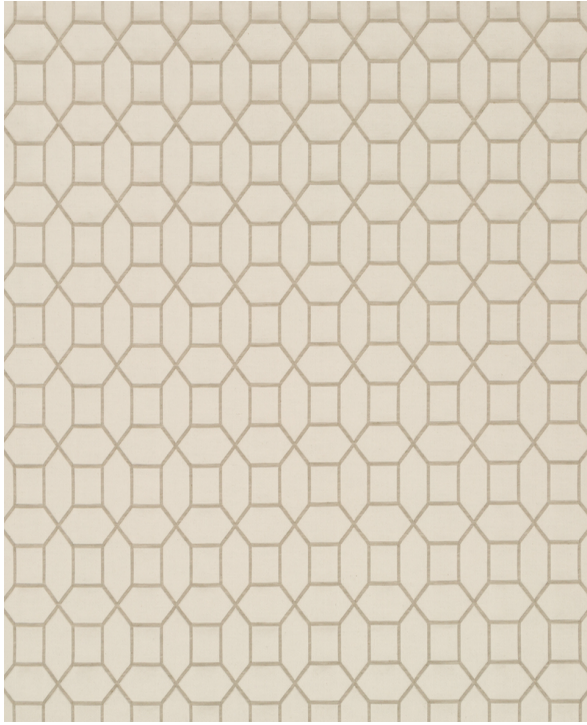




## Fabric Detail for: Spellbinder | Driftwood



|                     |   |
|---------------------|---|
| Pattern:            | Spellbinder   Driftwood                   |
| Width:              | 55"                                       |
| Horizontal Repeat:  | 2.500"                                    |
| Vertical Repeat:    | 2.750"                                    |
| Repeat Direction:   | Up The Roll                               |
| Origin:             | India                                     |
| Fabric Contents:    | 66% Polyester<br>34% Linen                |
| Cleaning Code:      | Pure Solvents Dry Cleaning                |
| Fabric Performance: | CA 117 2013<br>NFPA 260<br>UFAC - Class 1 |
| Book Name:          | DECORATIVE DRAPERY COOL COLORS            |