

APPLY STYLES

2



**Single Handle Pressure Balance
Bath Faucets**

Solid Brass Construction
Pressure Balance Valve/Gear Type
Easy Installation

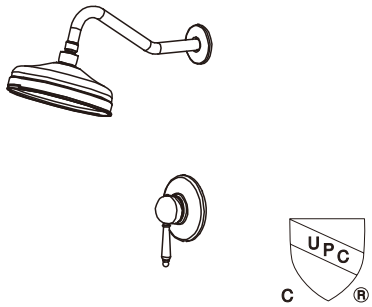
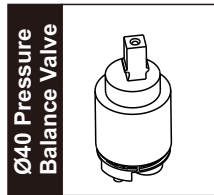
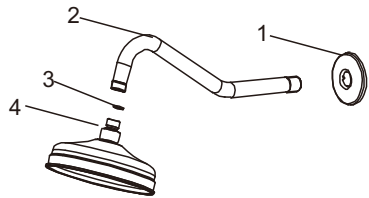
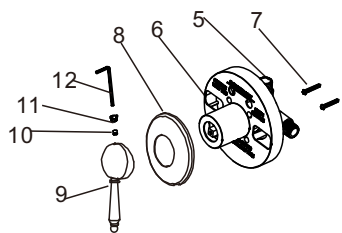


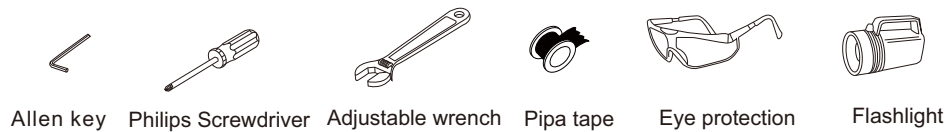
DIAGRAM AND PARTS LIST



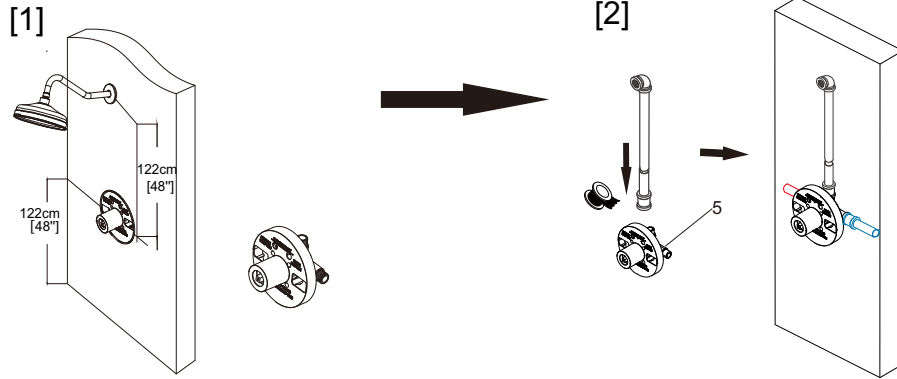
1. Trim
2. Shower arm
3. Gasket
4. Shower head
5. Valve body
6. Cover plate
7. Tapping screw
8. Panel
9. Handle
10. Screw
11. Red/ blue button
12. Allen key



RECOMMENDED TOOLS

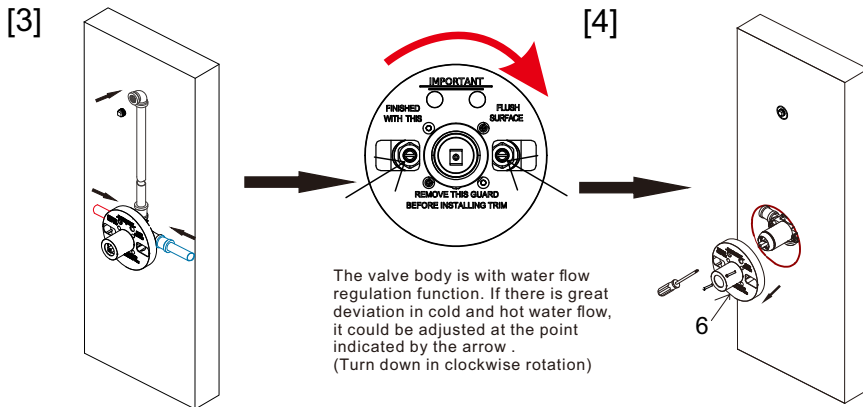


ASSEMBLY INSTRUCTIONS



1. Installation reference size as pic.

2. Connect the pipes into the valve body(5) ; Put valve body(5) against the wall. then connect the water supply hoses .

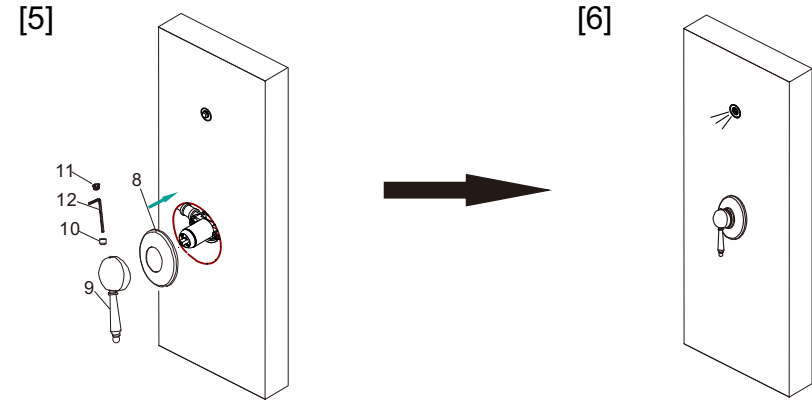


3.Plug the water outlets after the valve body is installed. Provide water from water inlet.

And then test the water pipes leaking or not as below:

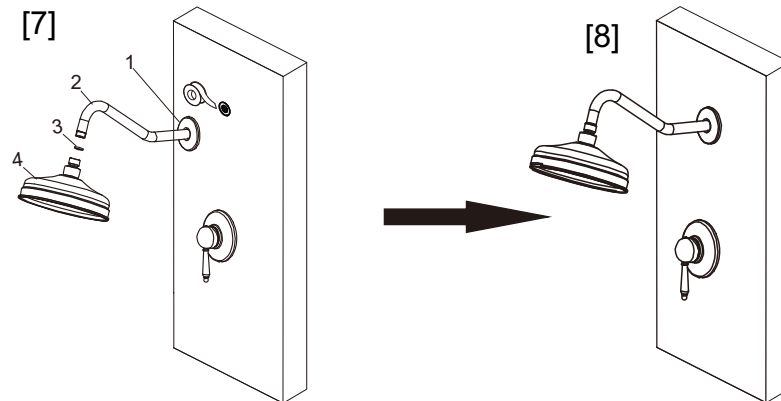
- 1)Test 3 min @ 1.6 Mpa when the ceramic cartridge is closed
 - 2)Test 3 min @ 0.4 Mpa when the ceramic cartridge is open
- Proceed to next step if no leaking after the testing.

4.Backfill the wall in concrete, tile on concrete and then remove the black cover plate(6) when available.



5.Feed the valve body with panel(8) and handle(9), then use the allen key and screw(10) to secure handle(9), put on the red/ blue button(11).

6.Take off up and down plug, turn on the cartridge to wash out the dirt in the water tube.



7. Use the tape to install in turn, Trim(1), shower arm(2), Gasket(3), shower head(4).

Testing for leakage after installation.

8.Complete installation.