

INDOOR MANUAL CONTROL FIRE STOVE



Limited 1-Year Manufacturer Warranty

Manufacturer warranty covers:

- Parts that are deemed defective within 30 day will be shipped free of charge.
- Any warranty claim after 30 days, will require shipping to be paid by the customer.

Contents 2

What is included 3

Assembly instructions 4

Instruction 5

Warranty 6

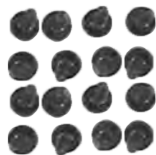
What is included



A. Stove

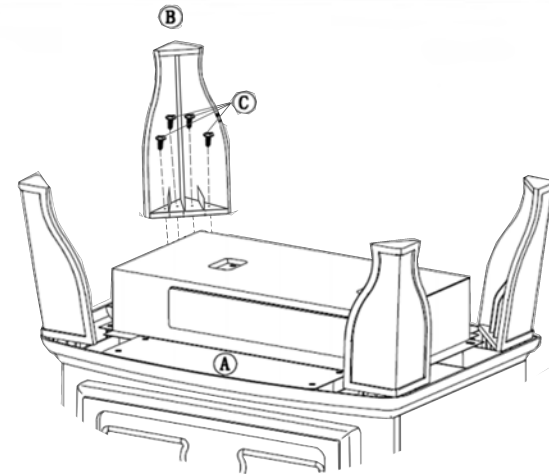


B. 4 x Legs

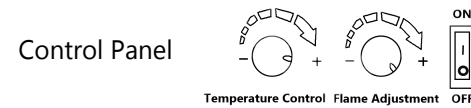


C. 16 x Screws

Assembly instructions



Turn Stove upside down and align holes in the leg with holes in the corner of stove frame. Thread screws through the holes in each leg and tighten securely with screwdriver. DO NOT over-tighten the screws.



For complete instruction, please visit our website or see additional instructions provided in the box.

